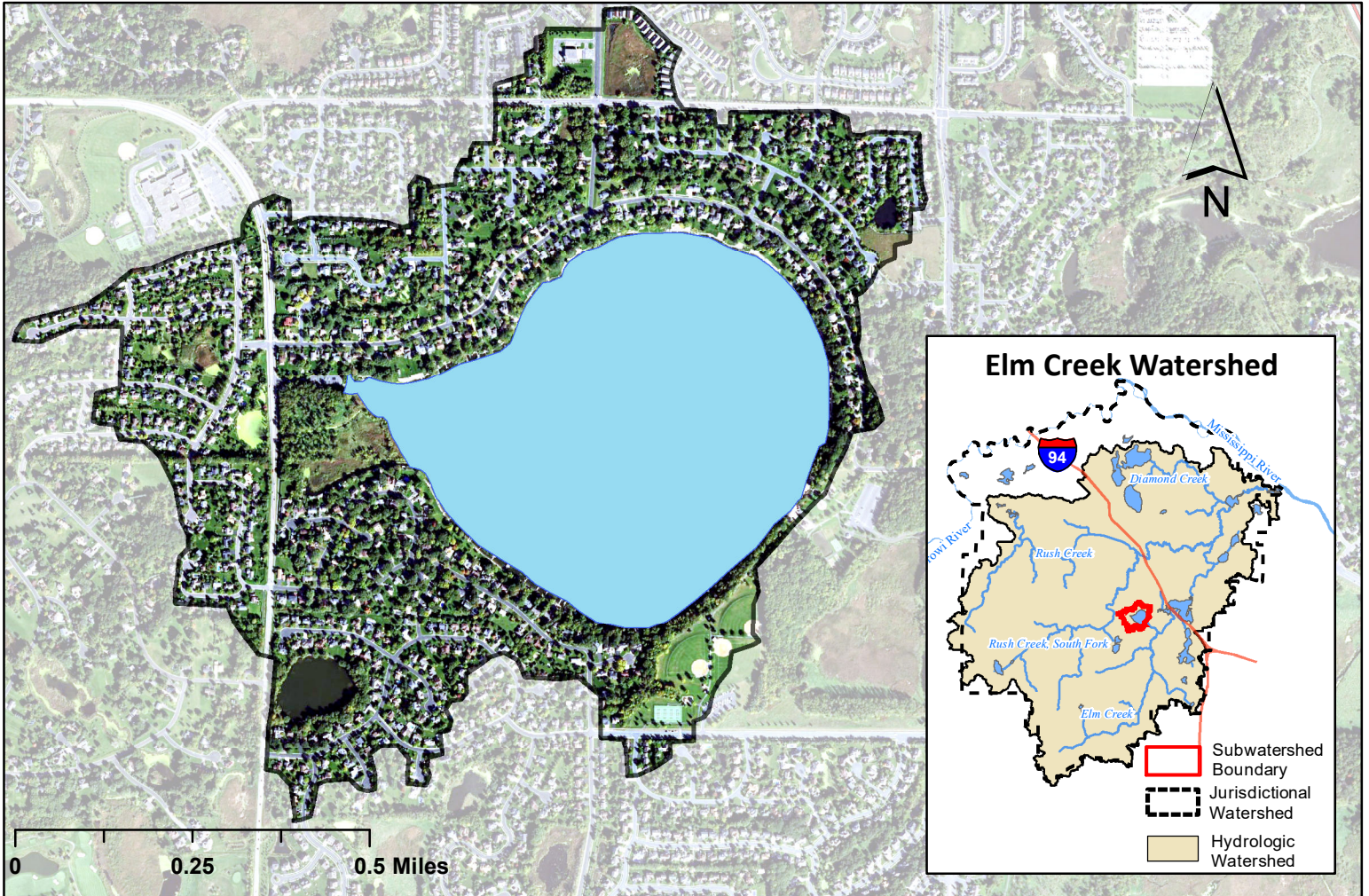
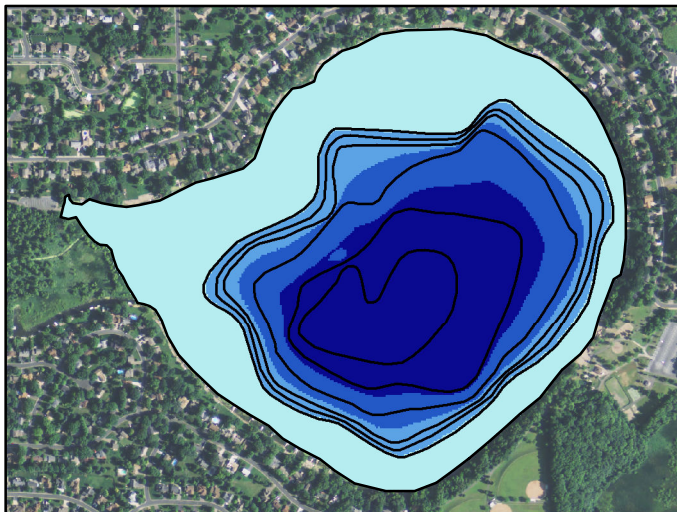


Weaver Lake Watershed Map

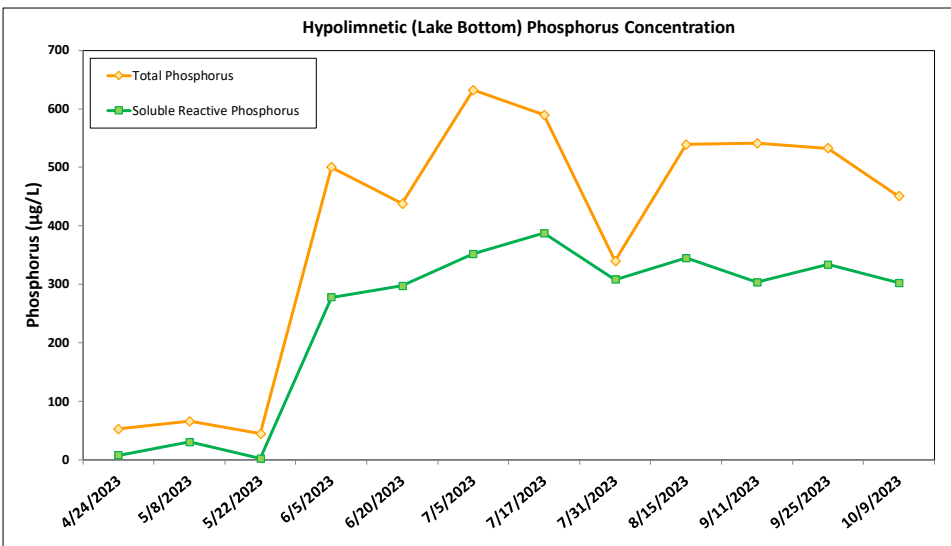
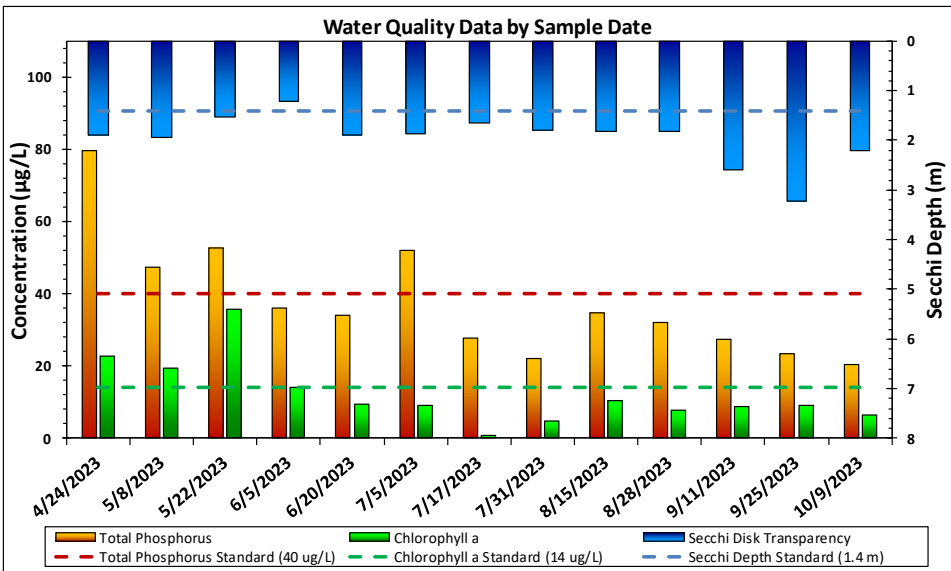
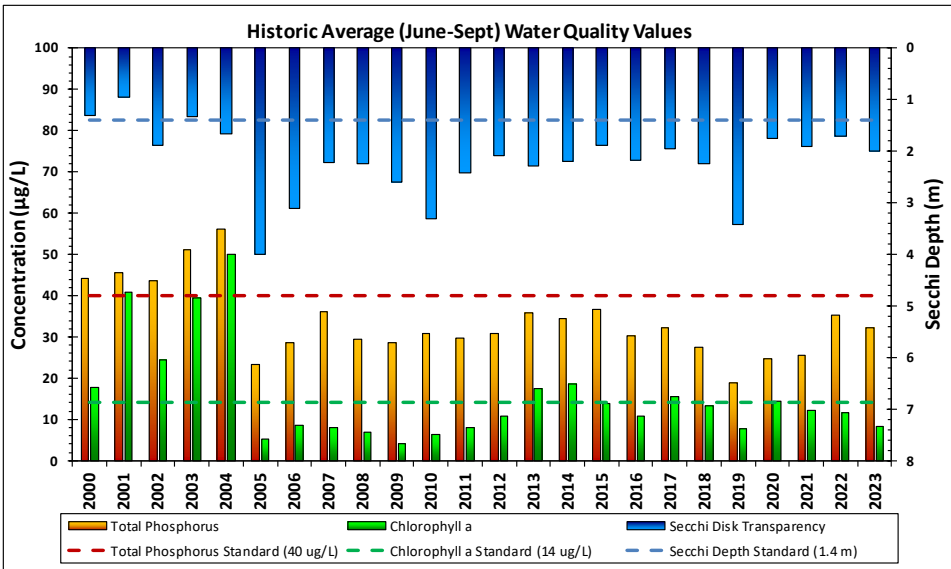


Weaver Lake Bathymetry



Lake and Watershed Characteristics

DNR #	27011700
Watershed Area	187 Acres
Lake Area	150 Acres
Percent Littoral Area	47%
Average Depth	21.1 ft.
Maximum Depth	52 ft.
Watershed:Lake Ratio	1.3:1
Impairment	None
Classification	Deep Lake



Weaver Lake Water Quality Report Card				
Year	TP	Chl-a	Secchi	Avg Grade
1997	B	A	C	B
1998	C	B	C	C+
1999	C	C	C	C
2000	C	B	C	C+
2001	C	C	D	C-
2002	C	C	C	C
2003	C	C	C	C
2004	C	D	C	C-
2005	B	A	A	A-
2006	B	A	A	A-
2007	C	A	B	B
2008	B	A	B	B+
2009	B	A	B	B+
2010	B	A	A	A-
2011	B	A	B	B+
2012	B	B	C	B-
2013	C	B	B	B-
2014	C	B	B	B-
2015	C	B	C	C+
2016	B	B	C	B-
2017	C	B	C	C+
2018	B	B	B	B
2019	A	A	A	A
2020	B	B	C	B-
2021	B	B	C	B-
2022	C	B	C	C+
2023	C	A	C	C-
MPCA Standard	C	B	C	C+

Met Council Grading System for Lake
Water Quality



Division of Water
Resources
December 2023