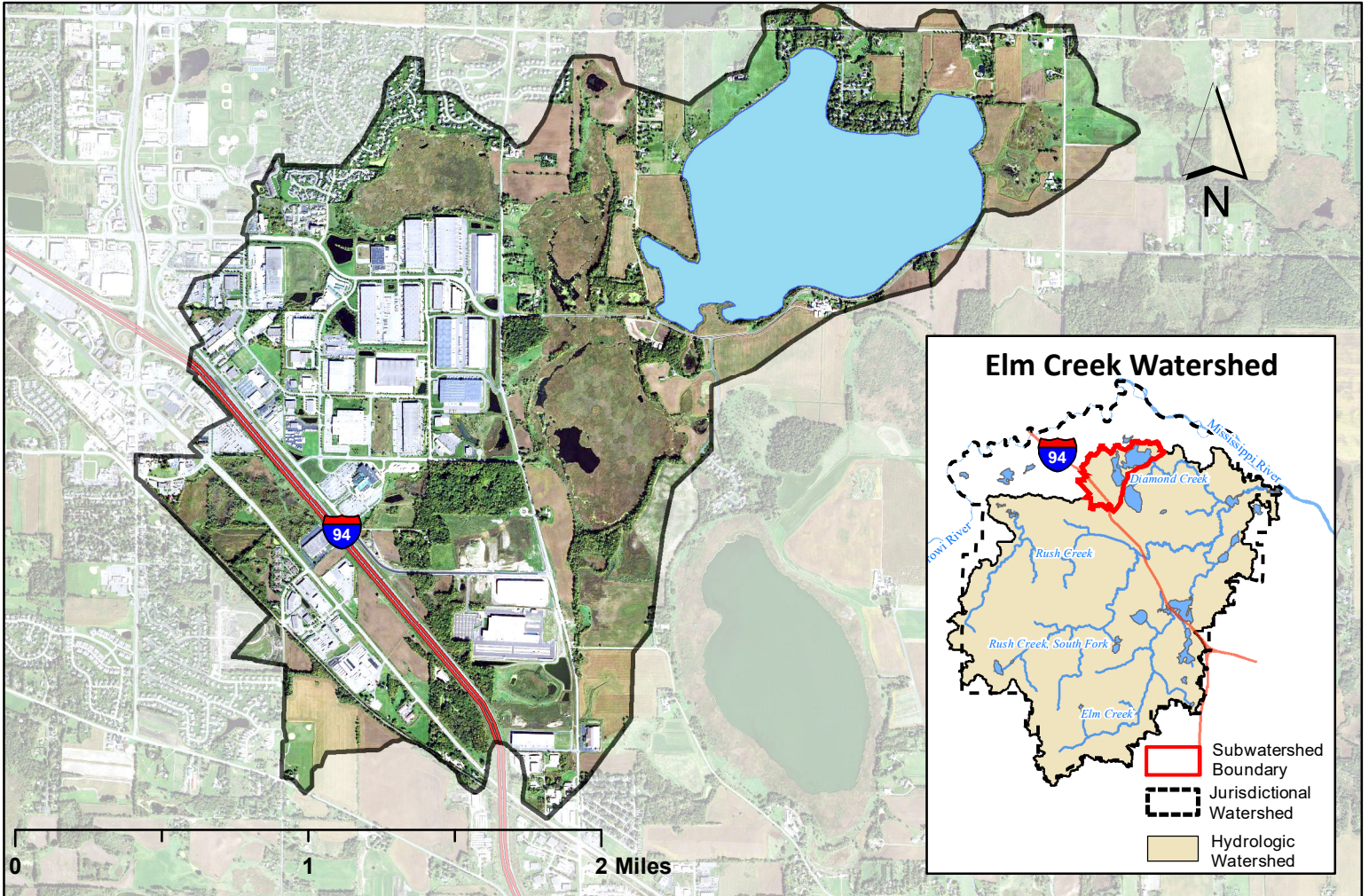
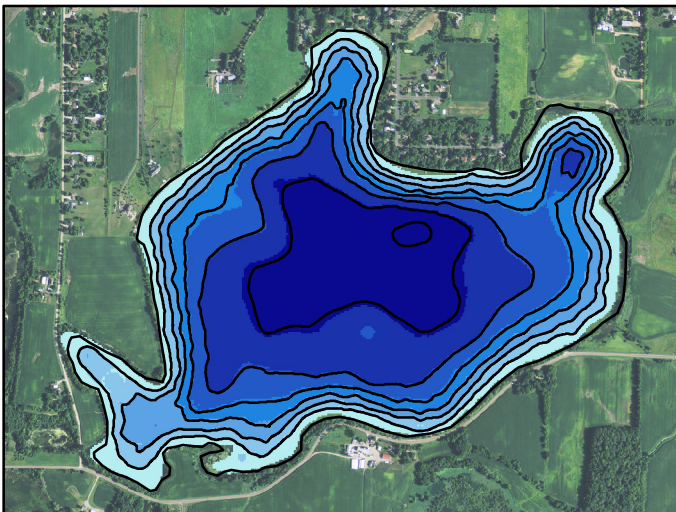


Diamond Lake Watershed Map

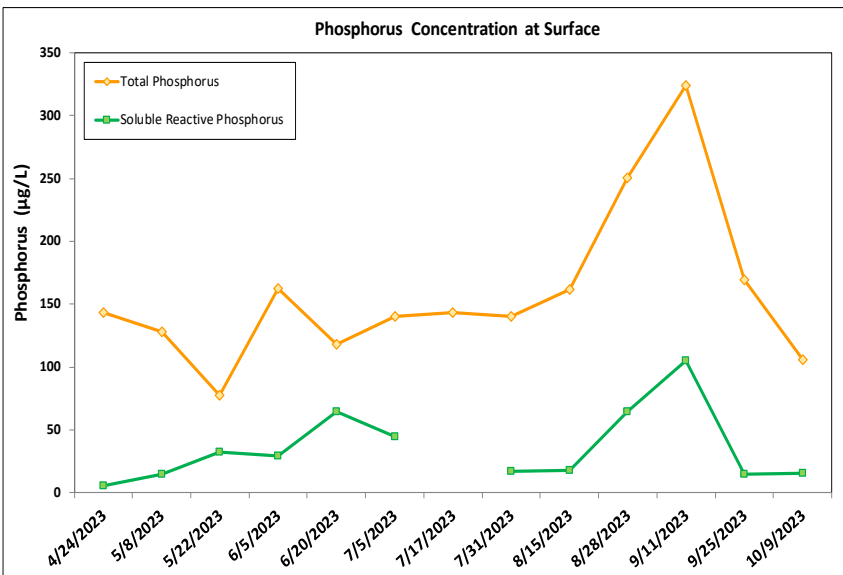
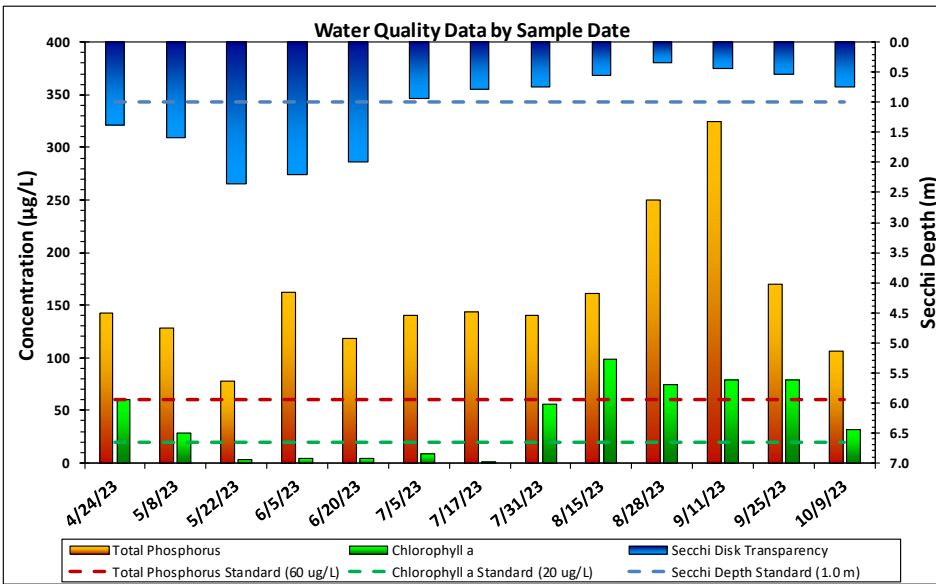
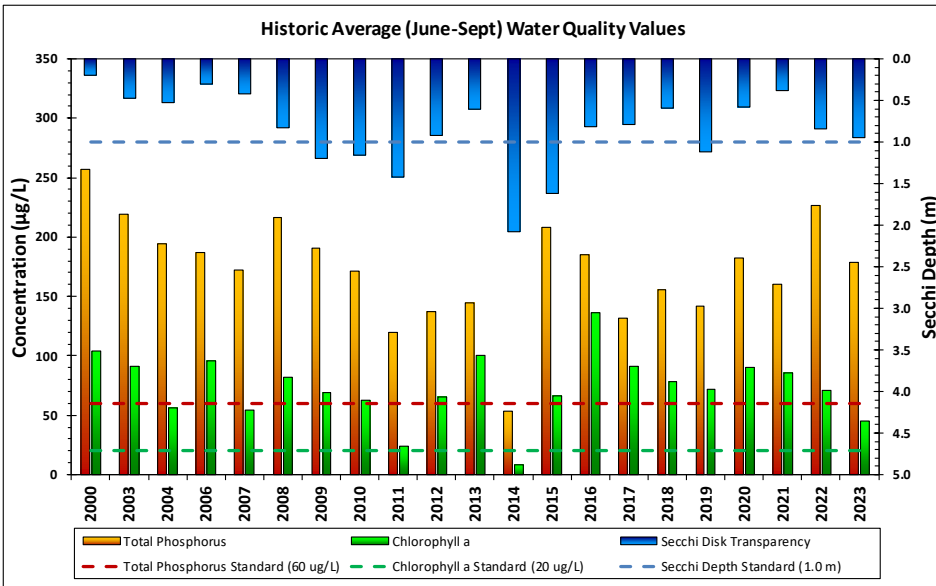


Diamond Lake Bathymetry



Lake and Watershed Characteristics

| | |
|---------------------------|--|
| DNR # | 27012500 |
| Watershed Area | 2,367 Acres |
| Lake Area | 382 Acres |
| Percent Littoral Area | 100% |
| Average Depth | 3.97 ft. |
| Maximum Depth | 7.37 ft. |
| Watershed:Lake Ratio | 6.2:1 |
| Impairment Classification | Excess Nutrients in 2006 Shallow Lake |



| Diamond Lake Water Quality Report Card | | | | |
|--|----|-------|--------|-----------|
| Year | TP | Chl-a | Secchi | Avg Grade |
| 1998 | D | D | F | D- |
| 2000 | F | F | F | F |
| 2003 | F | F | F | F |
| 2004 | F | D | F | F |
| 2006 | F | F | F | F |
| 2007 | F | D | F | F |
| 2008 | F | F | D | F |
| 2009 | F | D | C | D |
| 2010 | F | D | D | D- |
| 2011 | D | C | C | C- |
| 2012 | D | D | D | D |
| 2013 | D | F | F | F |
| 2014 | C | A | C | B- |
| 2015 | F | D | C | D |
| 2016 | F | F | D | F |
| 2017 | D | F | D | D- |
| 2018 | F | F | F | F |
| 2019 | D | D | D | D |
| 2020 | F | F | F | F |
| 2021 | F | F | F | F |
| 2022 | F | D | D | D- |
| 2023 | F | C | D | D |
| MPCA Standard | C | C | D | C- |

Met Council Grading System for Lake Water Quality