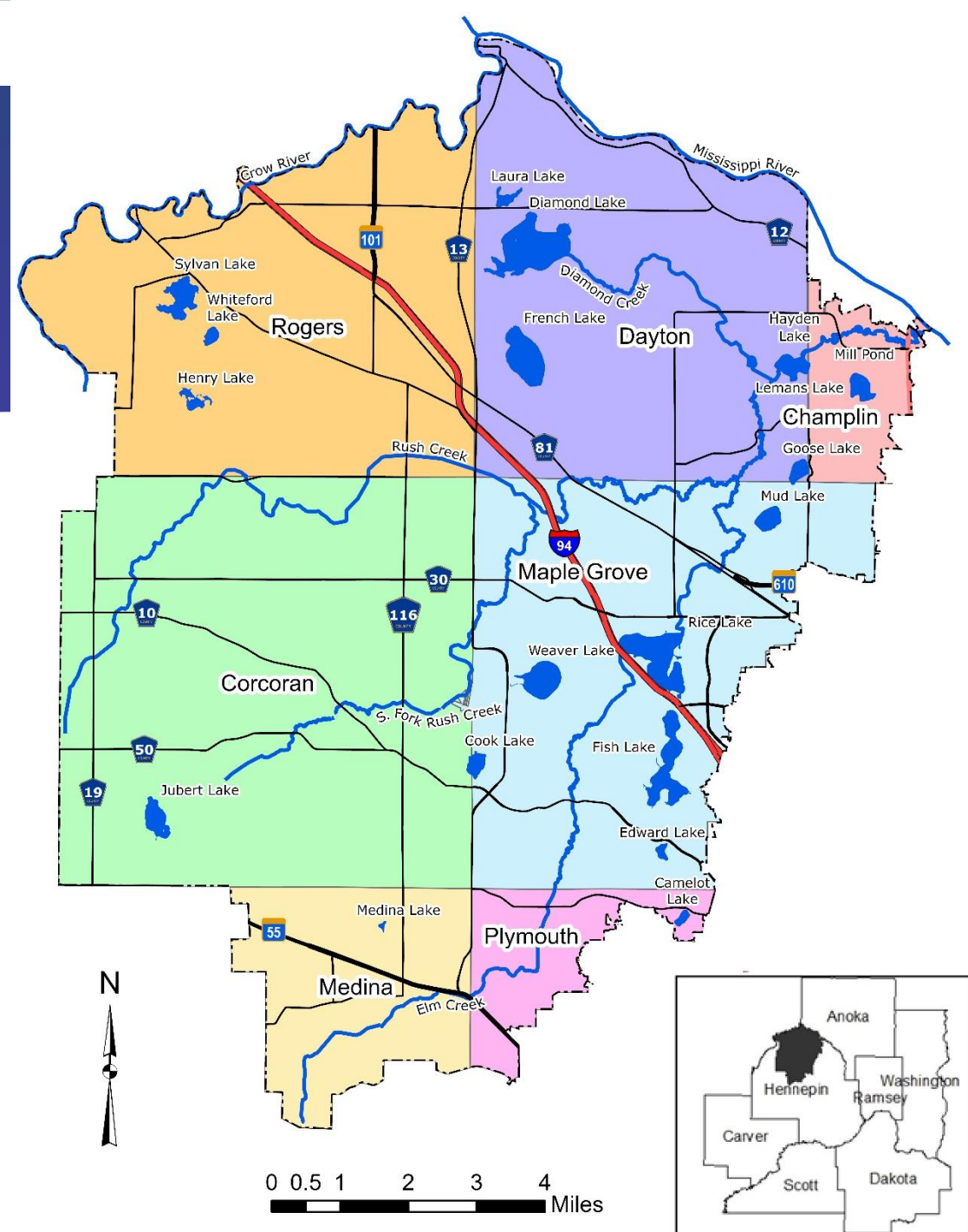


Introduction to the Fourth Generation Watershed Management Plan

APRIL 2025

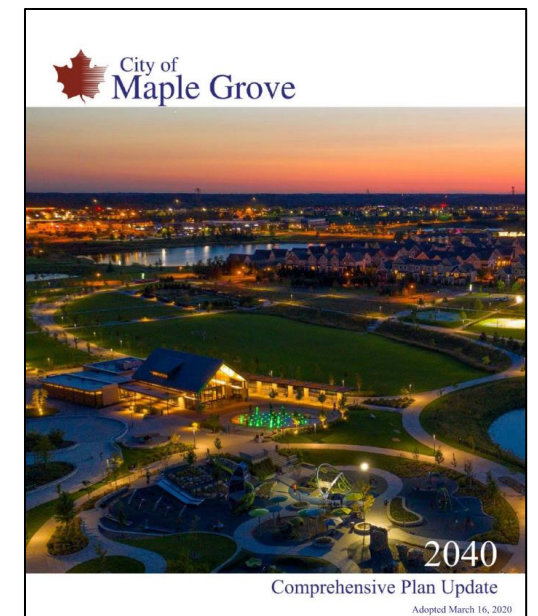
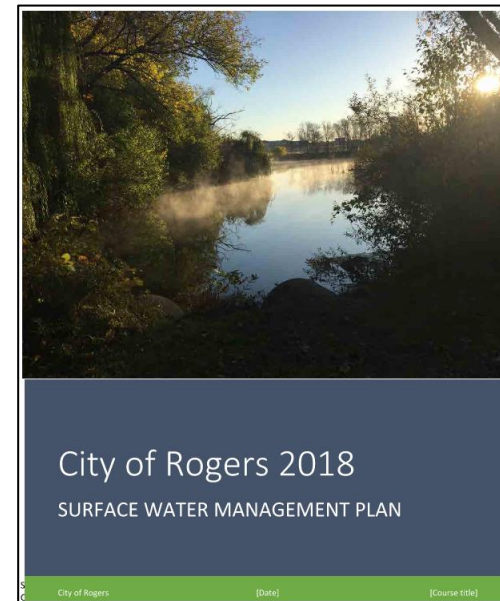
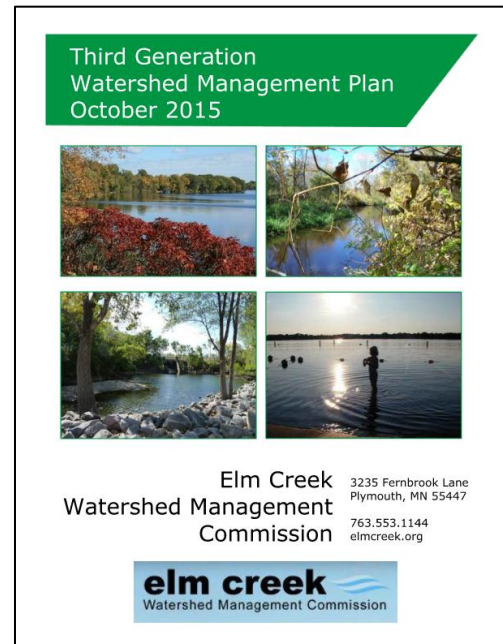
Introduction

- ▶ Joint powers collaboration funded by cities vs. district with taxing authority
- ▶ Water and runoff don't stop at city boundaries
- ▶ Watershed sets agreed-upon standards and policies
- ▶ Cities implement projects, watershed manages programming
- ▶ Cities regulate based on watershed policy
- ▶ Citizen Board of Commissioners, City staff Technical Advisory Committee (TAC)



The Fourth Generation Management Plan

- ▶ WMOs must update their management plans every ten years
- ▶ This will be Elm Creek's fourth plan
- ▶ Separate from but related to the Comprehensive Plan process



What does the Commission do?

- ▶ **Reviews plans** for new development and redevelopment
 - ▶ No increase in pollutants or the rate of stormwater runoff
 - ▶ Limit the new volume of runoff from impervious surface
 - ▶ Completed **439** project reviews in last 10 years
- ▶ **Monitors** 4 “sentinel lakes” every year and others every 3-4 years
- ▶ **Monitors** flow and water quality at 3 stream sites
- ▶ Partners with 3 other WMOs on **education and outreach**, including classroom lessons for over 22,000 4th graders
- ▶ Partners with Hennepin County on outreach and BMPs on **agricultural properties**
- ▶ Provided cities with \$4.8 million in **grants and cost share** for 22 projects

What is in a Watershed Management Plan?

- ▶ An overview of the current physical conditions in the watershed, called a **Land and Water Resources Inventory**
- ▶ General information about how water and natural resources are managed and **who does what**
- ▶ An assessment of existing and potential water resource **problems**
- ▶ **Goals and policies** for managing the water resources and addressing the identified problems
- ▶ An **implementation plan** of programs and projects to work toward the 10-year goals

Identified Problems in the Elm Creek Watershed: Water Quality

1. Several lakes and streams have **degraded water quality** and are “Impaired Waters”
2. New impairments include **chloride** on Elm Creek and S Fork Rush Creek
3. Streams in the watershed have **erosion and sedimentation** issues
4. **Agricultural** properties also contribute pollutants

▶ Impaired lakes:

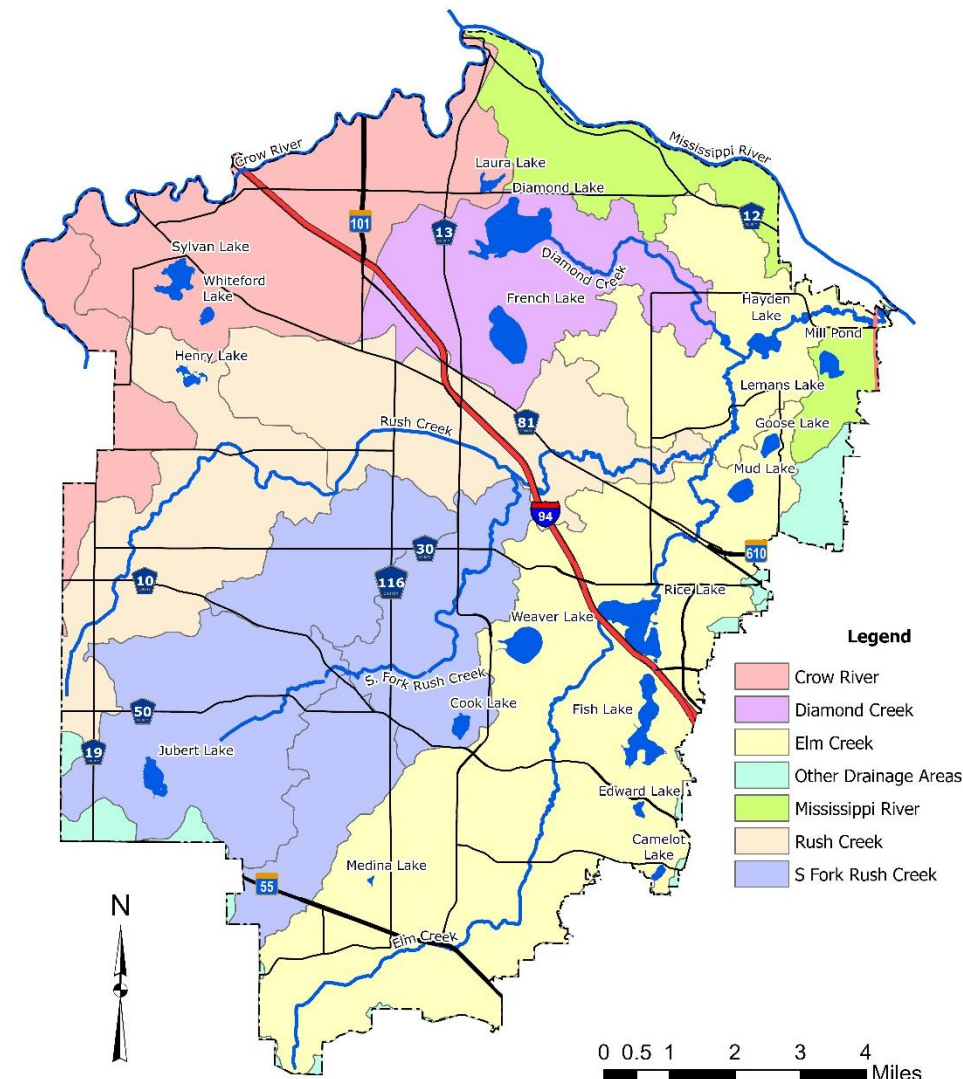
- ▶ Diamond
- ▶ Cowley
- ▶ Rice
- ▶ Henry
- ▶ Sylvan
- ▶ Goose

▶ Impaired streams:

- ▶ Elm Creek
- ▶ Rush Creek
- ▶ S Fork Rush Cr
- ▶ Diamond Cr
- ▶ Crow River
- ▶ Miss River

Identified Problems in the Elm Creek Watershed

5. Need to increase **voluntary adoption** of BMPs, both urban and rural
6. Need to expand education and outreach to create **behavioral change**
7. Land is transitioning more densely developed land uses at **higher imperviousness**.
8. Climate data in Minnesota shows an increase in intensity and depth of **precipitation** events.



Fourth Generation Plan 2025-2034 Goals

1. Protect, maintain, and improve the water quality and ecological integrity of the water and natural resources within the watersheds and the downstream receiving waters.
2. Reduce stormwater runoff rates and volumes to limit flood risk, protect conveyance systems, protect surficial groundwater, and reduce or mitigate impacts that have already occurred.
3. Educate and engage all stakeholders in the watersheds on surface water issues and opportunities.
4. Anticipate and proactively work to withstand adverse impacts from changing land use/cover and environmental and climate conditions.

Implementation Strategies

- ▶ **Capital Improvements Program (CIP)**
 - ▶ Stream restorations on Rush Creek and South Fork Rush Creek
 - ▶ Carp and other fish management on Fish and Rice Lakes
 - ▶ Diamond Lake Alum Treatment
 - ▶ Cost share in upgraded street sweepers
 - ▶ “Generic projects”
- ▶ **City and Partnership Cost Share Programs**
 - ▶ Promotes voluntary BMPs
 - ▶ Up to 100% funding for improvements on private property
 - ▶ Up to 50% funding for small City-led projects



Education and Outreach

- ▶ **Continue and expand partnerships**
 - ▶ With Hennepin County to assist producers and animal operators with voluntary BMPs
 - ▶ With West Metro Water Alliance (WMWA) for education and outreach to students, parents, and the public and expand outreach coordinator position to full time
 - ▶ Add more outreach to lake associations, HOAs, and other groups
- ▶ **Joint Chloride Management Plan** – Elm, Shingle Creek and West Mississippi WMOs
 - ▶ Better understand chloride sources
 - ▶ Strategically target management actions
 - ▶ Develop partnerships
 - ▶ Deliver common messages

Climate Resiliency and Sustainability

1. Resiliency Planning Framework (2025-2028)

- ▶ Gathering information and guidance
- ▶ Preparing for Phase 2

2. Climate Vulnerability and Assessment (2028-2030)

- ▶ Model scenarios using 2050 development and future precipitation ranges
- ▶ Estimate extent of future flooding
- ▶ Identify risks and vulnerabilities

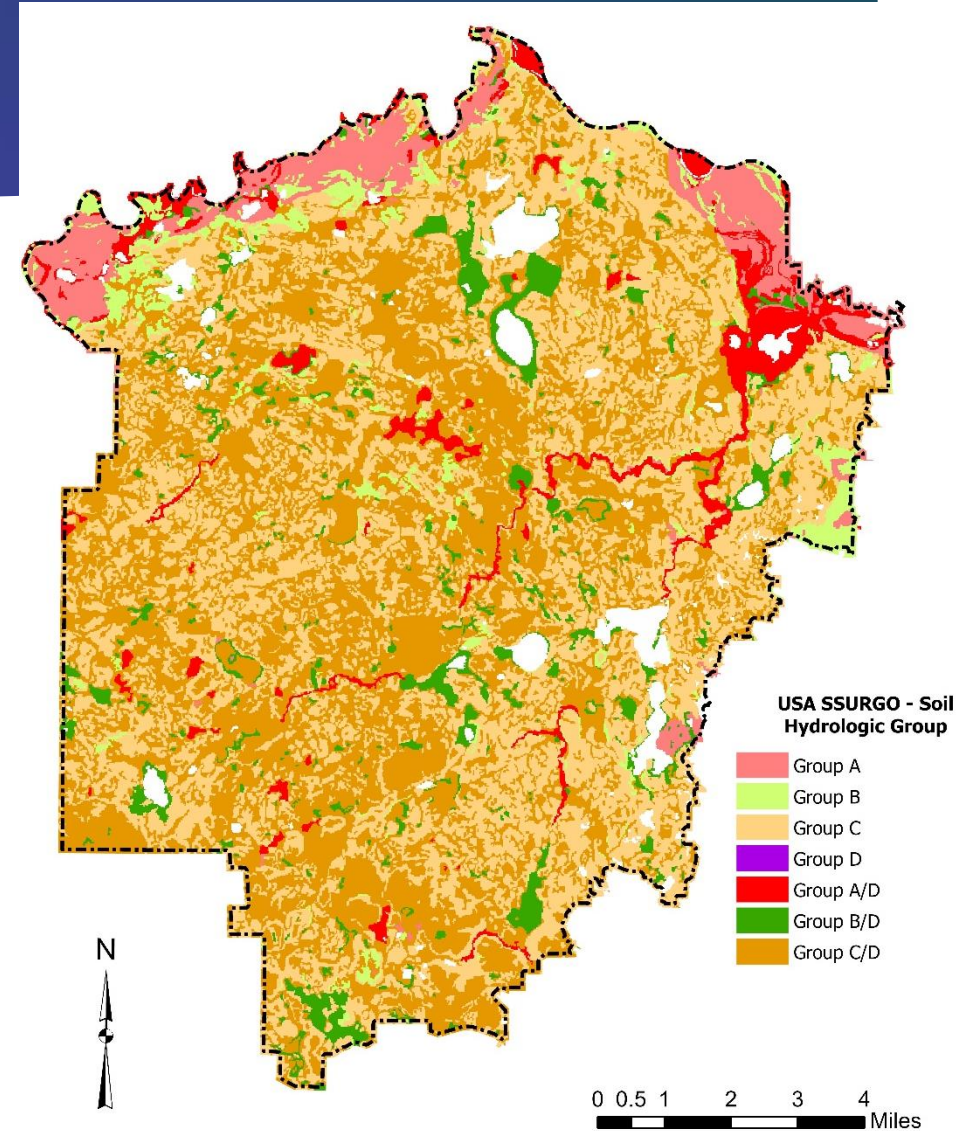
Climate Resiliency and Sustainability

3. Adaptation Strategy and Identification (2030-2032)

- ▶ Evaluate options to prevent future flooding
- ▶ Understand impacts of land use practices
- ▶ Consider revising development rules and standards

4. Adaptation Strategy Implementation (2032-2035)

- ▶ Construct resiliency projects such as additional water storage, enhanced infiltration, flood proofing
- ▶ Communicate strategies



Fourth Generation Plan Update

The Commission is updating its Management Plan. This Fourth Generation Plan sets forth goals, policies, and actions for the period 2025-2034. This Plan will guide work undertaken by the Commission, member cities, and other stakeholders.

What is our focus for 2025-2034?

The Commission has established four priorities of focus for the Fourth Generation Plan:

1. Protect, maintain, and improve the water quality and ecological integrity of the water and natural resources within the watersheds and the downstream receiving waters.
2. Reduce stormwater runoff rates and volumes to limit flood risk, protect conveyance systems, protect surficial groundwater, and reduce or mitigate impacts that have already occurred.
3. Educate and engage all stakeholders in the watershed on surface water issues and opportunities.
4. Anticipate and proactively work to withstand adverse impacts from changing land use/cover and environmental and climate conditions.

Draft Plan-in-Progress

A draft of the Plan and its appendices are linked below.

[Draft Fourth Generation Management Plan](#) - as of April 2025

[Appendix A - Joint Powers Agreement](#)

[Appendix B - Land and Water Inventory](#)

[Appendix C - Rules and Standards](#)

[Appendix D - Monitoring Program](#)

[Appendix E - Implementation Program and CIP Descriptions](#)

[Appendix F - Self Assessment](#)

We welcome your comments and questions!

** Indicates required field*

Name *

First

Last

Email *

Comment *

Submit

[www.elmcreekwatershed.org/
watershed-management-
plan.html](http://www.elmcreekwatershed.org/watershed-management-plan.html)