



# **Elm Creek Watershed Management Commission**

**2024 Annual Activity Report**



# Elm Creek Watershed Management Commission

## 2024 Annual Activity Report

### Table of Contents

	<b>Page</b>
Annual Activity Report .....	1
The Commission .....	1
The Elm Creek Watershed .....	1
Map of the Watershed .....	2
Table 1 - Area of Members within the Elm Creek Watershed .....	3
Watershed Management Plan .....	3
Goals .....	4
Water Quantity .....	4
Water Quality .....	4
Groundwater .....	5
Wetlands .....	5
Drainage Systems .....	5
Operations and Programming .....	5
Implementation .....	5
Rules and Standards .....	5
Monitoring Program .....	6
Education and Outreach .....	6
Other Activities .....	6
WRAPS Implementation .....	6
Local Plans .....	7
2024 Work Plan in Review .....	7
Routine and Administrative Actions .....	7
Education and Outreach Program .....	8
Agricultural Outreach .....	9
Special Studies and Projects .....	10
Monitoring Program .....	11
Financial Reporting .....	12
Projected 2025 Work Plan .....	14
Routine and Administrative Actions .....	14
Education and Outreach Program .....	14
Agricultural Outreach .....	15
Special Studies and Projects .....	15
Monitoring Program .....	16

*(more)*

## Appendices

1. Commissioners | Technical Advisory Committee | Staff and Consultants
2. Watershed Boundary Changes
3. 2024 Project Reviews  
2024 Project Review Map
4. 2023-2025 Operating Budgets
5. Hennepin County Projects
6. Monitoring Sites  
TRPD Lake Monitoring  
TRPD Stream Monitoring
7. CAMP Monitoring  
Lake Monitoring History
8. USGS Stream Monitoring
9. Water Connections.

This report was prepared  
for the Elm Creek Watershed Management Commission  
by JASS, Inc.

For more information about this report, contact [Judie@jass.biz](mailto:Judie@jass.biz)

We gratefully acknowledge the assistance of:  
Eric Megow, Diane Spector, Katie Kemmitt, and Grace Neumiller, Stantec Consulting Services  
Brian Vlach, Three Rivers Park District

About the cover photographs:  
*Dayton River Road Stabilization Project*  
*Left: stream slopes are eroding and stream banks are being undercut.*  
*Right: stream banks have been stabilized with riprap and overbanks have been vegetated.*  
*Photos courtesy of Jordan Wochenske, Stantec Consulting Services*

*This annual activity report, prepared by the Elm Creek Watershed Management Commission in accordance with the annual reporting requirements of Minnesota Rules Chapter 8410.0150 Subp. 2-3, summarizes the activities undertaken by the Commission during calendar year 2024.*

## ≡ THE COMMISSION

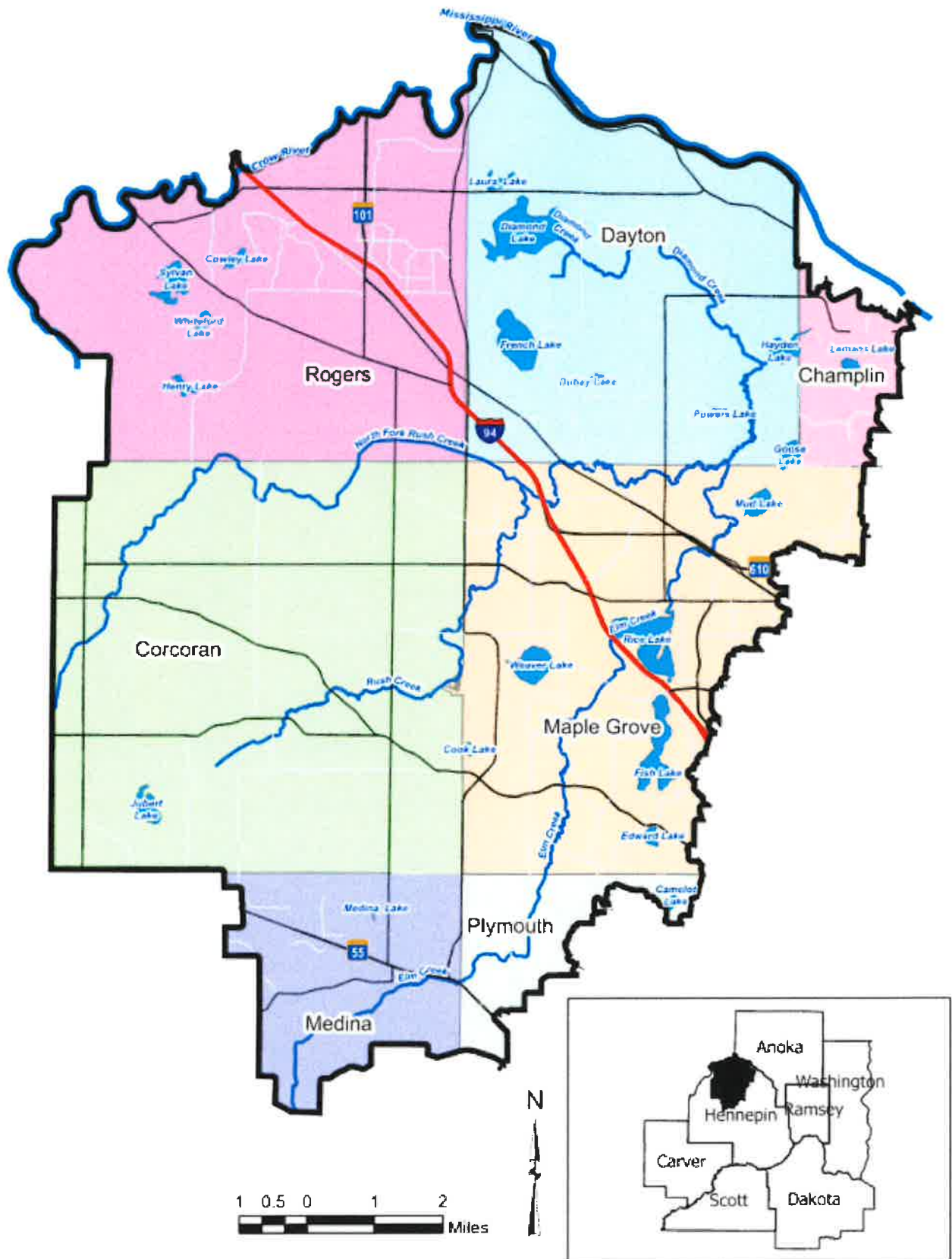
The Elm Creek Watershed Management Commission was created to protect and manage the natural resources of the Elm Creek watershed. A Board of Commissioners comprised of representatives appointed by the member communities was established as the governing body of the Commission. Its members are the cities of Champlin, Corcoran, Dayton, Maple Grove, Medina, Plymouth, and Rogers.

**MEETINGS** The Commission meets monthly on the second Wednesday at 11:30 a.m. in the Plymouth Community Center, 14800 34th Avenue North, Plymouth, Minnesota. The meetings are open to the public and visitors are welcome. Meeting notices and agenda items are posted on the Commission's website. [www.elmcreekwatershed.org](http://www.elmcreekwatershed.org).

**COMMISSIONERS | TECHNICAL ADVISORY COMMITTEE | STAFF** *Appendix 1* includes the names of the Commissioners and their Alternates appointed to serve in 2024. Also listed there are the members of the Commission's Technical Advisory Committee (TAC) along with the individuals/firms serving as the Commission's administrative, legal, and technical support staff. The Commission has no employees.

## ≡ THE WATERSHED

The Elm Creek watershed covers approximately 130.97 square miles and lies wholly within the north central part of Hennepin County, Minnesota. The Crow and Mississippi Rivers demarcate the northern boundary. Although some areas in the north drain to the Crow and Mississippi Rivers, they are within the legal boundaries of the Elm Creek watershed. Table 1 on page 3 shows the area share of the member communities in the watershed. A map of the watershed may be viewed on the following page. The map has been updated to reflect changes made to the Elm Creek/Shingle Creek and the Elm Creek/West Mississippi watershed boundaries in 2023. A map showing the actual boundary changes is included as *Appendix 2*. The Bassett Creek and Mississippi watershed management organizations have also accepted the proposed boundary changes with Elm Creek. Additional changes will be made to the Pioneer-Sarah Creek/Elm Creek and Minnehaha Creek/Elm Creek boundaries during development of the Elm Creek Commission's



**Table 1 - Area of Members within the Elm Creek Watershed**

Local Government Unit	Square Miles	%age of Watershed
Champlin	3.08	2.36%
Corcoran	36.06	27.61%
Dayton	25.17	19.27%
Maple Grove	26.32	20.15%
Medina	9.34	7.15%
Plymouth	4.44	3.40%
Rogers	26.20	20.06%
<b>Total</b>	<b>130.61</b>	<b>100.0%</b>

Fourth Generation Watershed Management Plan, which is currently underway.

**≡ THE WATERSHED PLAN**

The Elm Creek Watershed Management Commission adopted its Third Generation Watershed Management Plan on October 14, 2015. The Plan describes how the Commission will manage activities in the Elm Creek watershed in the ten-year period 2015-2024.

The Plan includes information required by Minnesota Administrative Rules Chapter 8410, Local Water Management: 1) an updated land and water resource inventory; 2) goals and policies; 3) an assessment of problems and identification of corrective actions; 4) an implementation program; and 5) a process for amending the Plan. The Plan also incorporates information and actions identified in the Elm Creek Watershed-wide Total Maximum Daily Load study (TMDL) and Watershed Restoration and Protection Strategy Study (WRAPS), completed between 2009 and 2016.

The Commission, along with the Citizen and Technical Advisory Committees (CAC and TAC), identified the following issues during development of the plan:

- **Water quality**—numerous lake and stream impairments, impact of land use changes, stream stability.
- **Agricultural impacts on water quality**—increase agricultural BMPs, develop effective mechanisms to encourage voluntary adoption, more effective outreach.
- **Funding**—maintaining a sustainable funding level; funding capital projects.
- **Other issues**—lack of information and knowledge of water quality issues and actions by multiple stakeholders; need to be realistic and prioritize actions; increase member city involvement; and foster collaboration with other agencies. Through identification of

these issues, the Commission developed the following priorities to guide water resources planning and management functions:

- **Implement priority projects**, provide cost-share to member cities to undertake projects to help achieve WRAPS lake and stream goals.
- **Use results of WRAPS study to establish priority areas**, complete subwatershed assessments to identify specific best management practices (BMPs) that feasibly and cost-effectively reduce nutrient and sediment loading to impaired water resources.
- **Develop model manure management ordinance** to regulate placement of new, small non-food animal operations; require member cities to adopt that or other ordinances and practices to accomplish its objectives.
- **Partner with other organizations to complete pilot project** for targeted fertilizer application, increase and focus outreach to agricultural operators.
- **Continue participating in joint education and outreach activities** with the West Metro Water Alliance (WMWA) and other partners.

The goals and policies created as a result of this process include the following:

## Goals

### Water Quantity

- **Maintain post-development 2-year, 10-year, and 100-year peak rates of runoff** at pre-development levels for critical duration precipitation events.
- **Maintain post-development annual run-off volume** at pre-development volume.
- **Prevent loss of floodplain storage** below the established 100-year elevation.
- **Reduce peak flow rates** in Elm, Diamond, and Rush Creeks and tributary streams to the Crow and Mississippi rivers and preserve conveyance capacity.

### Water Quality

- **Improve Total Phosphorus concentration in the impaired lakes** by 10% over the 2004-2013 average by 2024.
- **Maintain or improve water quality in the lakes and streams** with no identified impairments.
- **Conduct a TMDL/WRAPS progress review** every five years following approval of the TMDLs and WRAPS studies.
- **Use information in the WRAPS to identify high priority areas** where the Commission will partner with cities and other agencies to provide technical and financial assistance.

### **Groundwater**

- Promote groundwater recharge by requiring abstraction/infiltration of runoff from new development/redevelopment.
- Protect groundwater quality by incorporating wellhead protection study results into development and redevelopment Rules and Standards.

### **Wetlands**

- Preserve the existing functions and values of wetlands within the watershed.
- Promote the enhancement or restoration of wetlands in the watershed.

### **Drainage Systems**

- Continue current Hennepin County jurisdiction over county ditches in the watershed.

### **Operations and Programming**

- Identify and operate within a sustainable funding level that is reasonable to member cities.
- Foster implementation of priority TMDL and other implementation projects by sharing in their cost and proactively seeking grant funds.
- Operate a public education and outreach program to supplement NPDES Phase II education requirements for member cities.
- Operate a monitoring program sufficient to characterize water quantity, water quality, and biotic integrity in the watershed and to evaluate progress toward meeting goals.
- Maintain rules and standards for development and redevelopment consistent with local and regional TMDLs, federal guidelines, source water and wellhead protection requirements, non-degradation, and ecosystem management goals.
- Serve as a technical resource for member cities.

### **Implementation**

- The Third Generation Watershed Management Plan continues a number of activities that have been successful in the past and introduces some new activities, including modified development rules and standards and an enhanced monitoring program.

## **RULES AND STANDARDS**

The Commission updated policies from their Second Generation Plan and developed new standards based on the 2013 Minnesota NPDES General Permit for Municipal Separate Storm Sewer Systems (MS4s), the 2013 Minnesota NPDES Construction Stormwater General Permit, and

the Minnesota Pollution Control Agency's (MPCA) Minimal Impact Design Standards and State Stormwater Manual. These were compiled and codified into a Rules and Standards document and adopted in advance of the Third Generation Plan. The Commission's Rules and Standards may be viewed at <http://www.elmcreekwatershed.org/third-generation-plan.html>.

In general, the Rules and Standards apply to all development and redevelopment that are

- one acre or more in size;
- require at a minimum no increase in pollutant loading or stormwater volume;
- require no increase in the peak rate of runoff from the property;
- require the abstraction/infiltration of 1.1 inches of runoff from impervious surfaces; and
- clarify the wetland buffer requirements.

The Plan also provides a method by which member cities can take on review responsibilities for smaller projects, reducing the regulatory burden for small developers.

### **Monitoring Program**

The monitoring program continues the partnership with Three Rivers Park District (TRPD) and the United States Geological Survey (USGS) for routine flow and water quality monitoring on Elm Creek, with periodic monitoring of additional Elm Creek sites, and on Rush, North Fork Rush, and Diamond Creeks on a rotating or as-needed basis. Four lakes – Weaver, Fish, Rice, and Diamond Lakes – have been classified as “Sentinel Lakes,” and are monitored every year. Other lakes are monitored on a rotating basis.

### **Education and Outreach**

The Citizens Advisory Committee (CAC) developed a recommended Education and Outreach program that identifies stakeholder groups and key education messages. This Plan expands education and outreach activities to key stakeholders and continues collaborative partnerships with organizations such as the West Metro Water Alliance (WMWA) and WaterShed Partners.

### **Other Activities**

The Implementation Plan includes funding for BMP assessments and special studies such as feasibility studies and special monitoring that will identify the most cost-effective practices and projects.

### **WRAPS Implementation**

The Plan includes key findings and actions identified in the Elm Creek Watershed Restoration and Protection Strategies (WRAPS) study, which includes Total Maximum Daily Loads (TMDLs) for the impaired waters and improvement and protection strategies and activities for all waters.

## LOCAL PLANS

Member cities are required to adopt their own local water management plans during the life of the Commission's Watershed Management Plan. These plans must be consistent with the Commission's Plan and comply with MN Statutes, Section 103B.235, and MN Rules 8410 regarding local plan content.

### ≡ 2024 WORK PLAN IN REVIEW

Minnesota Rule 8410.0150 requires the Commission to submit to the Board of Water and Soil Resources (BWSR) a financial report, activity report and audit report for the preceding fiscal year. (The calendar year is the Commission's fiscal year.) 8410.0150 Subp. 3 outlines the required content of the annual activity report. It includes an assessment of the previous year's annual work plan and development of a projected work plan for the following year. The activities are based on the issues, priorities, and goals for the ten-year period 2015-2024 identified in the Commission's Third Generation Watershed Management Plan.

The Elm Creek Commission identified a number of activities to be undertaken in 2024. The activities are described below and the progress the Commission made toward completing these activities in 2024 is shown in *italics*. The 2024 Work Plan was approved on February 8, 2024.

## ROUTINE AND ADMINISTRATIVE ACTIONS

- § Continue to review local development/redevelopment plans for conformance with the standards outlined in the Commission's Third Generation Watershed Management Plan. Continue to evaluate the fee schedule and administrative processes updated in 2023 to determine how well they are funding the costs of reviewing the projects. *In 2024, the Commission reviewed 33 projects for conformance with the development rules and standards. Nine of these projects were in the city of Corcoran, seven in Maple Grove, six each in Dayton and Rogers, four in Plymouth, and one in Medina. Appendix 3 lists these projects and includes a map showing their locations.*
- § Maintain a fee structure that reimburses the Commission for the actual cost of completing and administering project reviews. *Staff will continue to review the fee structure for adequacy and implantability and recommend revisions, as necessary.*
- § Adopt a 2025 operating budget. *The Commission and the Technical Advisory Committee (TAC) reviewed the draft 2025 operating budget in May and it was approved by the Commission on June 12, 2024. The budget totaled \$495,895, with assessments to the membership of \$257,000, and the balance funded from application fees, interest, and reserves. (Appendix 4.)*

- § Prepare a 2023 Audit Report. *The 2023 Audit Report was prepared by Johnson and Company, Ltd., accepted at the Commission's June 12, 2024, meeting, and transmitted to the State Auditor and to the Board of Water and Soil Resources, per MN Rule 8410.*
- § Continue to populate and maintain the Commission's website [www.elmcreekwatershed.org](http://www.elmcreekwatershed.org) to provide news to residents, students, developers and other individuals interested in the water resources of the watershed. *The website is updated by the Commission's administrative and technical staffs as time is available.*
- § Publish an annual activity report summarizing the Commission's yearly activities and financial reporting. *The 2023 Annual Activity Report was published in April 2024 and made available to the member cities and the public on the Commission website, <http://www.elmcreekwatershed.org/annual-reports.html>.*

## EDUCATION AND OUTREACH PROGRAM

- § Continue as a member of the West Metro Water Alliance (WMWA). Activities supported by a contract educator for classroom visits and special events and a one-half time joint outreach coordinator to provide engagement and programming in five supporting watersheds: Bassett Creek, Elm Creek, Shingle Creek, and West Mississippi, along with Richfield-Bloomington WMO and Hennepin County. *The contract educator left in spring 2024 and some classroom visits at the end of the school year had to be cancelled or completed by WMWA or city staffs. Over the summer a new educator was hired and is now recruiting schools and completing those classroom lessons. The joint outreach coordinator has prepared and circulated various messaging kits according to a monthly calendar and is implementing outreach on chloride management and the Adopt-a-Drain program. She is also working on several special projects in each participating watershed.*
- § Sponsor Lakeshore/Resilient Yard Workshops as part of the Commission's Education and Public Outreach Program. The workshops are presented by Metro Blooms. *In fall 2024 the Commission, through WMWA/Hennepin County, contracted with Metro Blooms to offer a shoreline restoration workshop on Fish Lake. Another round of workshops/projects will be offered in 2025, with the possibility of including additional focus lakes.*
- § Develop and implement a Chloride Education and Outreach Plan. *In August, the Commission partnered with the Shingle Creek and West Mississippi WMOs to submit a grant application to BWSR's Accelerated Implementation program to prepare a joint, coordinated plan. On December 2, 2024, the three watershed organizations learned they had been awarded \$47,455 in grant funds for this project.*

- § Continue as a member of Blue Thumb and WaterShed Partners. *Staff will continue to virtually attend WaterShed Partner meetings and Blue Thumb meetings to share resources, bringing back programs and ideas for promotion by the Commission.*
- § Promote “Lawns to Legumes,” a program for residents to convert their lawns to pollinator habitat, either through bee lawns, native trees and shrubs, or pollinator plantings, targeting habitat for the Rusty-patched bumblebee, an endangered species. A collaboration between Blue Thumb and the Minnesota Board of Water and Soil Resources (BWSR), provides cost-share funding and other resources to help Minnesota residents establish pollinator habitat in their yards. *The Commission supports this program on its website and with membership in Blue Thumb. Partial funding for the shoreline restorations on Fish Lake is being provided by funds from this program.*



## AGRICULTURAL OUTREACH

- § Work with the Hennepin County Rural Conservation Specialist. Assist landowners in identifying BMPs for implementation throughout the watershed. Work with member cities to identify projects that will result in TMDL load reductions. *Hennepin County Environment and Energy Staff are collaborating with landowners to identify BMP projects as well as larger, more strategic projects for inclusion on the Commission’s Capital Improvement Program (CIP). Hennepin County staff have been actively working with property owners in the targeted subwatersheds, partially funded by WBIF funds and Commission levy funds, and providing monthly reports to the Commissions. (Appendix 5)*
- § Continue to work in partnership with the University of Minnesota’s agriculture specialist to help build relationships with the agricultural community in the watershed to achieve TMDL load reductions. *In 2024 the Commission did not undertake any joint activities with the agricultural specialist to supplement efforts of the Rural Conservation Specialists.*

## SPECIAL STUDIES AND PROJECTS

- § The Elm Creek Third Generation Watershed Management Plan expires on October 23, 2025. It typically takes about 18 months to complete a plan and take it through the review and approval process. This means the Commission should consider initiating the Fourth Generation Plan by April 2024. *The Commission provided the required 60-day notice to review agencies in April and held a kickoff meeting in June 2024 to initiate the Plan. At year-end, the Commission had completed a self-assessment, a problems and issues identification, an update of priorities and goals, and an updated education and outreach plan. The Commission and TAC have begun resiliency planning and, in early 2025, will wind down the plan development process by reviewing the monitoring program and development rules and standards and updating the Implementation Plan. A full draft plan will be available for review by April 2025.*
- § Using Board of Water and Soil Resources (BWSR)-provided Watershed-Based Implementation Funding (WBIF) allocated in 2023, complete the subwatershed assessment of the South Fork Rush Creek subwatershed, and complete the feasibility assessment for remeandering North Fork Rush Creek between CR 116/Fletcher Lane and Brockton Road. *The South Fork Rush Creek SWA is complete and is moving to the implementation phase. The preliminary design has been completed for the North Fork remeandering analysis. That study is expected to be completed by spring 2025.*
- § Undertake Phase 1 of the Elm Creek Watershed TMDL 10 Year Review. Phase 1 is the collection of information about BMPs completed since the baseline years in the TMDL modeling and completion of follow-up monitoring data. Where there is enough data, a trend analysis will be completed to determine if there have been any statistically significant changes to water quality. *Phase 1 is nearly complete. The analysis of reductions from development is complete and the analysis of load reductions from projects is in process. In early 2025 this data will be used to update the TMDL Implementation Plan so it can be incorporated into the Fourth Generation Plan.*
- § Undertake high priority projects identified in the Rush Creek Headwaters and Diamond Lake Subwatershed Assessments. This activity is led by Hennepin County Conservation staff. The Commission has dedicated an additional \$175,000 in Watershed-Based Implementation Funding to these implementation efforts, centered on the Rush Creek Headwaters and Diamond Lake subwatersheds. *Several projects have been completed or are nearing completion, and the entire \$175,000 has been either spent or encumbered. Some of the*

*highlights include a large wetland restoration, a variety of BMPs on several properties including manure bunkers, water and sediment control basins (WASCOBs), exclusionary fencing, grassed waterways, and replanting a large parcel of former cropland with prairie grasses.*

- § Obtain updates from member cities regarding projects already included on the Commission's Capital Improvement Program (CIP) as well as new projects that they would like to have considered for inclusion on the CIP. *A minor plan amendment was approved in June 2024 to add two projects: Diamond Lake drawdown/alum treatment and a French Lake drawdown, both in Dayton; and to revise the cost of the Rush Creek Stream Restoration project at Rush Hollow in Maple Grove.*
- § Provide City and Partnership Cost Share funding to support small projects as requested. *Two projects were funded and completed: Jaeger-Jordan Ditch Stabilization in Dayton (city cost share) and Fish Lake Carp Removal in Maple Grove (partnership cost share).*
- § Convene with BWSR and other entities eligible to receive funding from the next round of WBIF grants to establish priorities and select projects and strategies for funding. Elm Creek was awarded \$373,590, which was available July 1, 2024. *The Convene Group allocated \$46,000 to the education and outreach coordinator; \$175,00 to agricultural BMPs; \$108,000 to three projects in the Diamond Creek drainage area in Dayton; and \$44,590 to develop a strategic plan for proceeding with fish and habitat management on Fish and Rice Lakes and to help fund implementation projects. BWSR approved the work plan and contract in November 2024.*

## MONITORING PROGRAM

- § Continue to partner with the Three Rivers Park District (TRPD) to share in the costs of conducting lake and stream monitoring in the watershed. In 2024, TRPD will monitor Elm Creek at 77th Avenue (ECF77); Rush Creek at Territorial Road (RT); and Diamond Creek (DC) for continuous flow and water quality. A dissolved oxygen longitudinal survey will be conducted if adequate flow is available. TRPD will monitor four sentinel lakes (Fish, Weaver, Diamond, and Rice). Five additional lakes will be monitored as part of the Elm Creek Watershed TMDL 10 Year Review: Sylvan, Cowley Henry, Jubert and French. *Park District staff were unable to monitor Lakes Henry and Jubert due to lack of access. They were able to monitor Rush Creek at Shannon Lane (RCSL) and at County Road 116 (RC116) and to perform a vegetative survey on Sylvan Lake. (Appendix 6 contains a map showing the lake and stream monitoring sites as well as the 2024 monitoring "report cards.")*

- § Fund the monitoring of one lake through Metropolitan Council’s Citizen Assisted Monitoring Program (CAMP). One lake will be monitored through CAMP in 2024, depending on volunteers. *Teal Lake was monitored in 2024. (Appendix 7 provides a description of the CAMP program and the history of lake monitoring in the watershed.)*
- § Continue to operate the monitoring station in Champlin in cooperation with the United States Geological Survey (USGS). *The cooperative agreement with the USGS was reauthorized in April 2024 and extends through September 2025. (Appendix 8)*



- § Promote river stewardship through Hennepin County’s RiverWatch program with three sites in 2024. *After a multi-year hiatus, in 2024 Hennepin County launched Watershed Connections, an experimental, hands-on environmental education experience for youth from 6-12 grades using RiverWatch as its foundation. Students from Osseo High School and Wayzata High School each monitored sites in the Elm Creek Watershed in May and again in October 2024. WHS students monitored a site behind the High School off Peony Lane and OHS students monitored a site at the dam behind Maple Grove High School near the Medicine Lake Regional Trail. (Appendix 9)*

## ≡ FINANCIAL REPORTING

Appendix 4 shows the Elm Creek Watershed Management Commission’s approved operating budget and member assessments for the years 2023-2025. The Commission’s Joint Powers Agreement provides that each member community contributes toward the annual operating budget based on its share of the total market value of all property within the watershed.

Of the \$495,895 operating budget for 2025 approved by the Commission on June 12, 2024, revenue of \$182,000 was projected as proceeds from application fees, \$6,500 from partnership revenue, and \$30,000 from interest income and dividends, resulting in assessments to members totaling \$257,000. \$20,395 was projected as coming from reserves.

In 2024, the Commission designated \$550,000 as its share of the cost of three CIP projects. A Hennepin County ad valorem levy payable in 2025 was used to fund the Commission’s share of the projects.

\$182,000 was projected as project review-related expense; \$50,695 for water monitoring; and \$17,000 for education. \$142,700 was budgeted for administration, planning, and general operating expenses. At December 31, 2023, \$1,225,348 resided in restricted or assigned funds for special projects, studies and subwatershed assessments.

The Commission maintains a checking account at US Bank for current expenses and rolls uncommitted monies to its account in the 4M Fund, the Minnesota Municipal Money Market Fund.

The Commission follows Rule 54 of the Government Accounting Standard Board (GASB) to report Fund Balances. The fund balance classifications include:

**Nonspendable** – amounts that are not in a spendable form. The Commission does not have any items that fit this category.

**Restricted** – amounts constrained to specific purposes by their providers. One example would be ad valorem levy funds received from the County for capital improvement projects. The unused portion of these funds must be set aside in a restricted account for similar projects. Another example would be BWSR Legacy Grant proceeds where the funds are received prior to the onset of a project and where any unused portion must be returned to the grantor.

**Committed** – amounts constrained to specific purposes by the Commission itself. An example would be residual funds carried over from one year to the next for Studies, Project Identification and Subwatershed Assessments.

**Assigned** – amounts the Commission intends to use for specific purposes. Most line items in the Commission’s Operating Budget fall under this category.

**Unassigned** – amounts available for any purpose. These amounts are reported only in the general fund.

Amounts paid by the Commission per the 2023 Audit are as follows:

General engineering	\$217,099
General administration	149,492
Education	9,843
Programs	79,171
Projects	151,296
Capital projects	<u>159,553</u>
Total	\$766,454

General engineering work includes review of local plans, review of development/redevelopment projects, attendance at meetings and other technical services. General administration includes support to technical staff, attendance at meetings, insurance premiums, annual audit, legal counsel, tracking grant opportunities, watershed planning, and other non-engineering services.

### ≡ PROJECTED 2025 WORK PLAN.

The Commission's Third Generation Watershed Management Plan identifies issues, priorities, and goals for the ten-year period 2015-2024, including a portion of 2025 through the expiration of the Third Generation Plan in October. The Annual Work Plan is a more detailed set of actions the Commission undertakes to work toward meeting those goals. The 2025 annual work plan is a hybrid of Third and Fourth Generation Plan priorities. It was approved at the Commission's February 12, 2025, meeting.

### ROUTINE AND ADMINISTRATIVE ACTIONS

- § Continue to review local development/redevelopment plans for conformance with the standards outlined in the Commission's Third Generation Plan. Maintain a fee structure that reimburses the Commission for the actual cost of completing and administering project reviews. *Continue to evaluate the fee schedule and administrative processes for adequacy and implantability and recommend revisions, as necessary.*
- § Adopt a 2026 operating budget. *A Budget Committee will draft a 2026 Operating Budget for consideration by the Commission in May 2025.*
- § Prepare a 2024 Audit Report. *This report will be prepared by Johnson and Company, Ltd., and forwarded to the State Auditor and BWSR per MN Rule 8410.*
- § Update the Commission's Handbook and make it available on the Commission's website. *This will replace the current printed version which is out of date.*
- § Continue to populate and maintain the Commission's website to provide news to residents, students, developers, and other individuals interested in the water resources of the watershed. *This activity will continue in 2025.*
- § Publish an annual activity report summarizing the Commission's yearly activities and financial reporting. *The 2024 Annual Activity Report will be published in April 2025 and made available to the member cities and the public on the Commission website, <http://www.elmcreekwatershed.org/annual-reports.html>.*

### EDUCATION AND OUTREACH PROGRAM

- § Continue as a member of the West Metro Water Alliance (WMWA). *The contract educator will continue to schedule classroom visits in 2025. The four member WMOs: Bassett Creek, Elm Creek, Shingle Creek, and West Mississippi, along with Richfield-Bloomington WMO,*

*will continue to partner with Hennepin County to support a one-half-time outreach coordinator to provide engagement and programming in the five watersheds.*

- § Sponsor shoreline restoration/resilient yards workshops as part of the Commission’s Education and Public Outreach Program. *The workshops are presented by Metro Blooms. In 2025 the geographic focus area is again proposed to be Fish Lake, with the potential for adding another focus area in fall 2025.*
- § Work together with the Shingle Creek and West Mississippi WMOs to begin work on the Joint Chloride Management Plan, funded by a BWSR Accelerated Implementation Grant. *Shingle Creek is the Fiscal Agent and is preparing a work plan and contract, expected by March 2025, with work to begin thereafter.*
- § Continue as a member of Blue Thumb and WaterShed Partners. *Staff will continue to virtually attend WaterShed Partner meetings and Blue Thumb meetings to share resources, bringing back programs and ideas for promotion by the Commission.*

**AGRICULTURAL OUTREACH**

- § Work with the Hennepin County Rural Conservation Specialist. Assist landowners in identifying BMPs for implementation throughout the watershed. Work with member cities to identify projects that will result in TMDL load reductions. *Hennepin County Environment and Energy Staff will collaborate with landowners to identify BMP projects as well as larger, more strategic projects for inclusion on the Commission’s Capital Improvement Program (CIP). County Staff will provide updates to the Commissioners through their monthly Staff Reports.*

**SPECIAL STUDIES AND PROJECTS**

- § Initiate development of the Fourth Generation Watershed Management Plan. The current Plan expires October 23, 2025. *The Commission initiated work on the Fourth Generation Plan in June 2024. The work components for completion of the plan are shown below,*

<i>January-April</i>	<i>Complete final plan components (rules, monitoring, resilience)</i>
	<i>Complete implementation plan</i>
	<i>Meet with city citizens’ groups</i>
	<i>Press releases and survey for greater input</i>
<i>April-May</i>	<i>Informal review of initial draft</i>
<i>June-Aug</i>	<i>60-day formal review and public hearing</i>
<i>Aug-Nov</i>	<i>BWSR review and Commission final adoption</i>

*targeting approval at the October Board of Water and Soil Resources (BWSR) meeting and adoption of the final plan at the November Commission meeting.*

- § Using BWSR-provided Watershed-Based Implementation Funding (WBIF) allocated in 2023, complete the feasibility assessment for remeandering North Fork Rush Creek between County Road 116/Fletcher Lane and Brockton Road.
- § Complete the Watershed-wide TMDL Ten Year Review. Phase 1, collection of information about BMPs completed since the baseline years in the TMDL modeling and the first year of follow-up monitoring is nearly completed and is being used to determine if there have been any statistically significant changes to water quality. *Phase 2, which will be completed in 2025, is a second year of monitoring, filling any water quality monitoring gaps, and a review of the Implementation Plan to determine implementation priorities to be included in the Fourth Generation Plan. The intent of this review is to set up a “living analysis” that can then be added to annually as more data is available.*
- § Undertake high priority projects identified in the Rush Creek Headwaters, South Fork Rush Creek, and Diamond Lake Subwatershed Assessments. *This activity will continue in 2025, led by Hennepin County conservation staff. The Commission has dedicated an additional \$175,000 in Watershed-Based Implementation Funding to these implementation efforts.*
- § Undertake the annual Capital Improvement Program (CIP) process, including reviewing the annual CIP, setting a maximum levy, holding a public hearing, and certifying a levy. *If necessary, hold public meeting and adopt an amendment to the Third Generation Watershed Management Plan.*
- § Provide City and Partnership Cost Share funding to support small projects as requested. *These programs are continuously open until funds are depleted.*
- § Work as requested with the entities awarded WBIF grant funding from the Elm Creek allocation to complete that work. The total awarded was \$373,590, which was contracted in December 2024 and expires December 2027. *Entities include Hennepin County (shared outreach coordinator, agricultural BMPs), City of Dayton (Diamond Lake Neighborhood BMPs), and City of Maple Grove (Fish and Rice Lakes fish management).*

## MONITORING PROGRAM

- § Continue to partner with the Three Rivers Park District (TRPD) to share in the costs of conducting lake and stream monitoring in the watershed. *In 2025, TRPD will monitor Elm*

*Creek at 77th Avenue (ECF77); Rush Creek at Territorial Road (RT); and Diamond Creek (DC) for continuous flow and water quality. TRPD will monitor four sentinel lakes (Fish, Weaver, Diamond, and Rice). As part of the Elm Creek Watershed TMDL 10 Year Review four additional lakes (Henry, French, Laura, and Dubay) and two stream sites (Rush Creek at CR 116 and CR 101) will also be monitored.*

- § Fund the monitoring of one lake through Metropolitan Council's Citizen Assisted Monitoring Program (CAMP). *Jubert Lake will be monitored in 2025.*
- § Continue to operate the monitoring station in Champlin in cooperation with the United States Geological Survey (USGS). *The cooperative agreement with the USGS will be renewed in late 2025.*
- § Promote watershed stewardship through Hennepin County's Watershed Connections program. *The County has resumed the program, but participation is in ongoing discussion. No monies were budgeted for this item in 2025.*

Have a question about this report? Need more information?

Want to know how to get involved?

<http://www.elmcreekwatershed.org/contact-us.html>



# APPENDIX



### Commissioners

Commissioners and Alternate Commissioners are appointed by the communities they represent and serve at will. Officers are elected annually at the March regular meeting and assume office on April 1.

REPRESENTING	NAME/POSITION	ADDRESS	TELEPHONE/EMAIL
<b>Champlin</b>	Bill Walraven Secretary	216 Lowell Road Champlin, MN 55316	763.421.3206 traderstec@aol.com
	Gerry Butcher Alternate	309 Dayton Road Champlin, MN 55316	763.557.1451 jg_butcher@yahoo.com
<b>Corcoran</b>	Ken Guenther Treasurer	6315 Butterworth Lane Corcoran, MN 55430	612.710.0734 kenguentner@gmail.com
	Tom Anderson Alternate	22385 Rush Creek Drive Rogers, MN 55374	651.216.8125 tompand@yahoo.com
<b>Dayton</b>	Doug Baines Chair	13000 Overlook Road Dayton, MN 55327	763.323.9506 dougbaimes@aol.com
	Travis Henderson Alternate	12260 S Diamond Lake Road Dayton, MN 55327	612-743-4506 thenderson@ cityofdaytonmn.com
<b>Maple Grove</b>	Joe Trainor Commissioner	16075 Territorial Road Maple Grove, MN 55369	763.999-1748 joe.trainor1960@gmail.com
	Dan Riggs Alternate	12822 86th Place North Maple Grove, MN 55369	612.916.4406 driggs@carlsonmccain.com
<b>Medina</b>	Terry Sharp Commissioner	4274 Fairway Drive Medina, MN 55340	612.849.6230 tsharp2972@aol.com
	Steven Lee Alternate	1522 Medina Road Long Lake, MN 55356	952.412.7573 leesteven2001@yahoo.com
<b>Plymouth</b>	Catherine Cesnik Vice Chair		cesnik@gmail.com
	Clark Gregor Alternate	2940 Xanthus Lane Plymouth, MN 55447	763.509.5005 cgregor@plymouthmn.gov
<b>Rogers</b>	David Katzner Commissioner	14440 Edgewood Road Rogers, MN 55374	320.309.7804 dkatzner@carlsonmccain.com
	Kevin Jullie Alternate	13315 Oakwood Drive Rogers, MN 55374	763.428.9160 kjullie@srfconsulting.com

### Technical Advisory Committee

Members of the Technical Advisory Committee (TAC) are appointed by the member communities they represent. The TAC reviews guidelines, standards and polices used to evaluate plats, plans and proposals of the members and makes recommendations to the Commission. The TAC meets at the direction of the Commission.

REPRESENTING	NAME	ADDRESS	TELEPHONE/EMAIL
Champlin	Heather Nelson	City of Champlin 11955 Champlin Drive Champlin, MN 55316	763.923.7120 hnelson@ci.champlin.mn.us
Corcoran	Kevin Mattson	City of Corcoran 8200 County Road 116 Corcoran, MN 55340	763.400-7028 kmattson@ci.corcoran.mn.us
Dayton	Jason Quisberg	Stantec One Carlson Parkway Suite 100 Plymouth, MN 55447	763 252-6873 jason.quisberg@stantec.com
Maple Grove	Derek Asche	City of Maple Grove 12800 Arbor Lakes Parkway Maple Grove, MN 55313	763.494.6354 dasche@maplegrovmn.gov
Medina	Rebecca Haug	WSB 701 Xenia Ave S # 300, Golden Valley, MN 55416	763.438.7475 rhaug@wsbeng.com
Plymouth	Ben Scharenbroich	City of Plymouth 3400 Plymouth Boulevard Plymouth, MN 55447	763.509.5527 bscharenbroich@plymouthmn.gov
	Amy Riegel		763.509.5531 ariegel@plymouthmn.gov
Rogers	Andrew Simmons	City of Rogers 22350 S Diamond Lake Road Rogers, MN 55374	763.428.0907 asimmons@ci.rogers.mn.us
Stantec Consulting Services	Erik Megow	One Carlson Parkway Suite 100 Plymouth, MN 55447	763.252.6857 erik.megow@stantec.com
	Diane Spector		763.252.6880 diane.spector@stantec.com
	Katie Kemmitt		763.252.6879 katie.kemmitt@stantec.com
Resilience Resources, LLC	Rebecca Carlson	3235 Fernbrook Lane Plymouth, MN 55447	612.408.7515 rebecca@resilience-resources.com
Hennepin County Dept. of Environment and Energy	Kris Guentzel	701 Fourth Avenue S. Suite 700 Minneapolis, MN 55415-1600	612.596.1171 kristopher.guentzel@hennepin.us
	Kevin Ellis		612.543.3373 kevin.ellis@hennepin.us
Three Rivers Park District	Brian Vlach	12615 County Road 9 Plymouth, MN 55441	763.694.7846 brian.vlach@threeriversparks.org

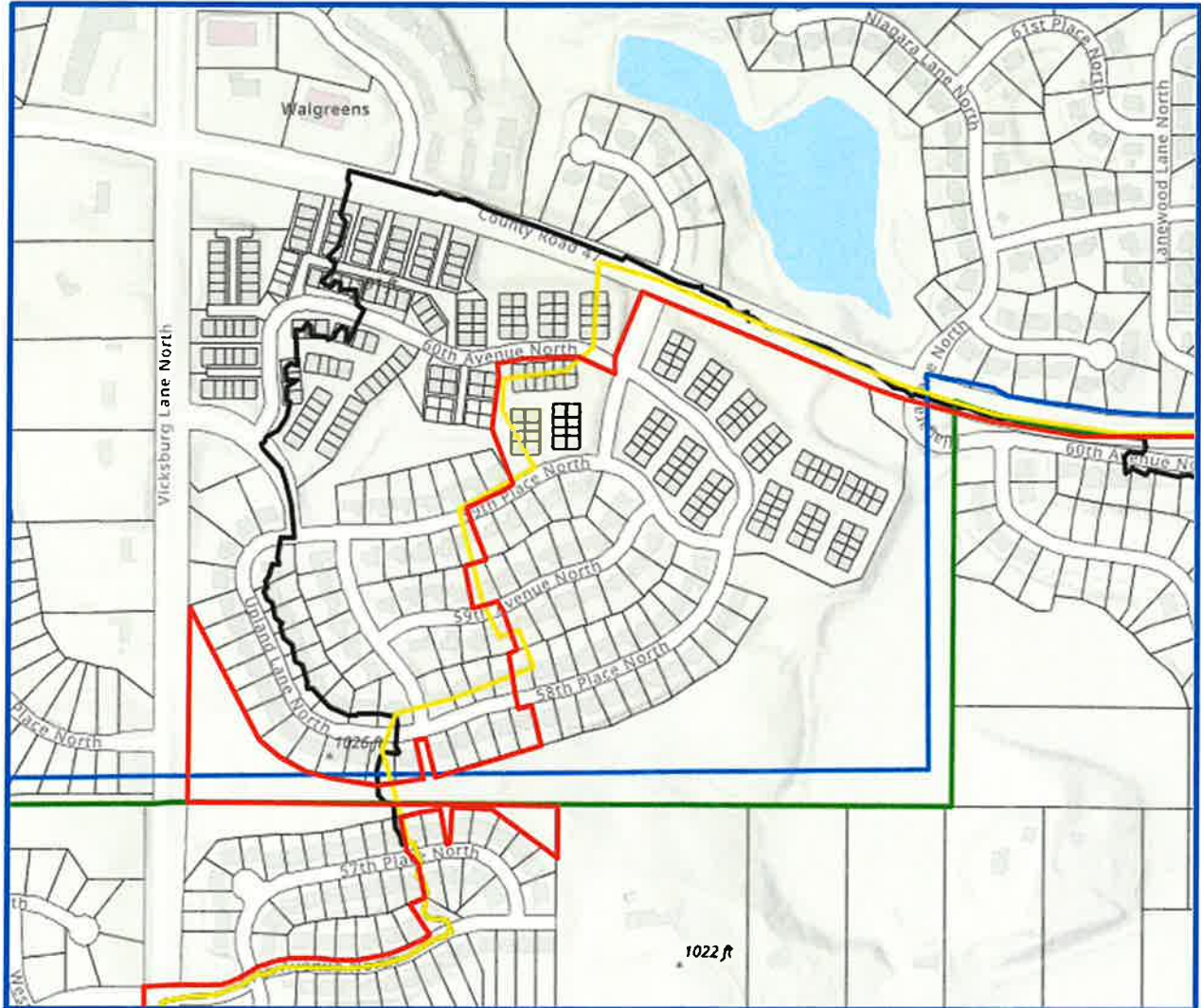
### Staff and Consultants

The required biennial solicitation for interest proposals for administrative, legal, and technical consulting services was published in the December 9, 2024, edition of the *State Register*. The next solicitation will occur in December 2026. The Commission has no employees.

NAME/POSITION	ADDRESS	TELEPHONE/EMAIL
<b>Technical Services</b>		
Stantec Consulting Services	Erik Megow	One Carlson Parkway Suite 100 763.252.6857 erik.megow@stantec.com
	Diane Spector	763.252.6880 diane.spector@stantec.com
	Katie Kemmitt	763.252.6879 katie.kemmit@stantec.com
Resilience Resources LLC	Rebecca Carlson	3235 Fernbrook Lane Plymouth, MN 55447 612.408.7515 rebecca@resilience-resources.com
Hennepin County Dept. of Environment and Energy	Kris Guentzel	701 Fourth Avenue S. Suite 700 Minneapolis, MN 55415-1600 612.596.1171 kristopher.guentzel@hennepin.us
	Kevin Ellis	612.543.3373 kevin.ellis@hennepin.us
<b>Legal Services</b>	James Monge, III	Campbell Knutson Grand Oak Office Center I 860 Blue Gentian Road #290 Eagan, MN 55121 651.234.6201 jmonge@ck-law.com
<b>Administrative Services</b>	Judie Anderson	JASS 3235 Fernbrook Lane 763.553.1144 judie@jass.biz
	Amy Juntunen	Plymouth, MN 55447 amy@jass.biz
	Beverly Love	beverly@jass.biz

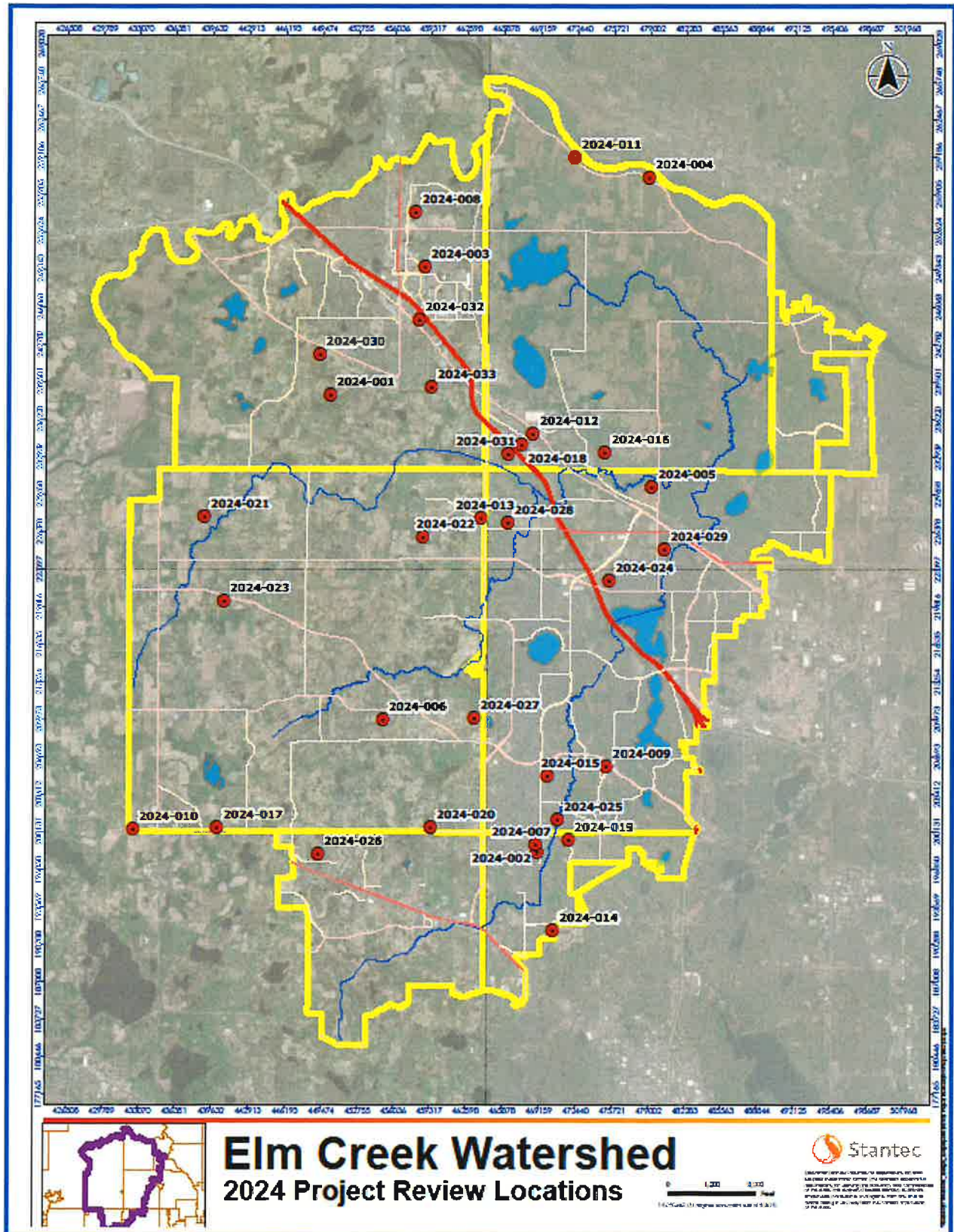


### Watershed Boundaries Revised



The former boundaries are blue (Shingle) and green (Elm). Development subsequently subdivided the old large agricultural parcel and changed drainage patterns. The yellow line is Shingle’s new hydro boundary and the red line the new legal boundary. The black line is the Elm hydro boundary established in the HUC-8 study. The City of Plymouth will work with the two watershed engineers to decide which hydro boundary more accurately reflects current conditions.





### Projects Reviewed in 2024

Project Number	Project Name	City	Reviewed for Rules*					
			D	E	F	G	H	I
2024-01	Saddle Ridge	Rogers	•	•	•			•
2024-02	The Meadows Park	Plymouth	•	•				•
2024-03	Rogers Townhomes	Rogers	•	•				•
2024-04	Dayton River Road Turn Lane Improvements	Dayton	•	•				
2024-05	Rush Hollow North	Maple Grove	•	•				
2024-06	Sunram Construction	Corcoran			•			
2024-07	Eagle Brook Church	Plymouth	•	•				•
2024-08	Rogers High School 2024 Improvements	Rogers	•	•				
2024-09	Heritage Christian Academy	Maple Grove	•	•				
2024-10	Corcoran Storage II	Corcoran	•	•				•
2024-11	Jaeger-Jordan Ditch Stabilization	Dayton	•	•	•			
2024-12	Dayton Interchange	Dayton	•	•				
2024-13	Red Barn Pet Retreat	Corcoran	•	•				•
2024-14	Schmidt Woods Park	Plymouth		•				•
2024-15	Hennessey Grove	Maple Grove	•	•				•
2024-16	Sundance Greens 11th Addition	Dayton		•				
2024-17	Pioneer Trail Industrial Park	Corcoran	•	•				•
2024-18	Kwik Trip 1187	Dayton	•	•				
2024-19	Silver Buckle	Plymouth	•	•		•		•
2024-20	Woodland Hills of Corcoran 2024	Corcoran	•	•		•		•
2024-21	Heather Meadows Third Addition	Corcoran	•	•				•
2024-22	Hope Meadows Townhomes	Corcoran	•	•				•
2024-23	Upward Acres	Corcoran	•	•				•
2024-24	Dental Associates	Maple Grove	•	•				
2024-25	Elm Creek Vista	Maple Grove	•	•	•	•		•
2024-26	Brindle Path	Medina	•	•		•		•
2024-27	Fairway Shores Villas at Cook Lake	Corcoran	•	•		•		•
2024-28	Osseo New Elementary School	Maple Grove	•	•		•		•
2024-29	Maple Grove Senior High – 2025 Additions/Renovations	Maple Grove	•	•				
2024-30	Northview Preserve	Rogers	•	•		•		•
2024-31	The Parkway Neighborhood	Dayton	•	•	•	•		•
2024-32	Rogers Tech Center	Rogers	•	•				•
2024-33	Fletcher Bypass	Rogers	•	•				

\*Rule D – Stormwater  
Rule E – Erosion Control

Rule F – Floodplain  
Rule G – Wetlands

Rule H – Bridge, Culvert Crossing  
Rule I – Buffers

Project Number	Rate Control (cfs) (pre- and post-development)			Net Change Nutrient Control (lbs./yr) (pre- and post-development)		Runoff volume Increase (AF/yr)	Abstraction (CF)	Filtration/biofiltration (CF)	Comments/notes
	2-yr pre   post	10-yr pre   post	100-yr pre   post	TP load #/yr reduction	TSS load #/yr reduction				
2024-01	38.1/25.7	71.7/51.6	172.8/139.7	-0.1	-358	2.3	7,540	Excess Wetland Buffers	
2024-02	18.2/17.5	51.2/38.3	135.3/60.8	-3.3	-947	3.9	-	11,115	Biofiltration Basins / Sheet flow
2024-03	7.2/6.8	13.9/11.9	27.3/19.9	-1.6	-180	2.0	-	5,185	Existing Stormwater Pond
2024-04	3.5/2.9	6.3/5.3	12.4/11.5	-0.1	-26	-	-	1,620	Biofiltration ponds (x3) and a swale
2024-05	15.1/6.5	27.2/18.0	45.0/41.8	-0.7	-400	4.6	-	14,162	Biofiltration Basin
2024-06	-	-	-	-	-	-	-	Rule E Only	
2024-07	18.5/3.3	29.4/6.0	53.9/12.0	-0.5	-338	20.1	-	58,829	Biofiltration Basins
2024-08	3.3/2.7	33.7/24.6	234.6/166.3	-	-	-	-	Regional Facilities from 2022-016	
2024-09	18.6/9.3	32.4/22.4	63.2/59.3	0	-473	1.7	-	8,868	Underground Filtration
2024-10	3.87/3.69	7.79/6.98	17.55/13.65	-0.3	-206	2.23	-	-	New and existing stormwater ponds
2024-11	-	-	-	-2.2	-5,732	-	-	-	Ravine stabilization
2024-12	20.13/7.88	31.29/15.82	77.82/60.33	-1.0	-409	-	-	29,586	Ponds & filtration basins
2024-13	17.4/17.4	40.5/40.4	99.5/99.4	-4.5	-444	-	-	7,671	Filtration basins & existing wetlands
2024-14	-	-	-	-	-	-	-	Rule E & I Only; Buffers provided	
2024-15	11.4/9.7	15.4/12.2	54/52.7	0.0	-161	31.8	-	7,400	Biofiltration Basin
2024-16	-	-	-	-	-	-	-	Rule E Only - Stormwater requirements were permitted previously (2020-029)	
2024-17	72.5/37.9	134.2/68.6	280.2/136.9	-0.2	-1,619	41.11	-	127,587	Retention basins with filtration benches
2024-18	13.5/5.7	28.5/18.0	63.2/41.1	-0.9	-508	8.6	-	27,443	Filtration ponds/basins
2024-19	25.3/23.9	33.5/30.6	44.8/39.6	-0.4	-435	58.4	-	12,250	IESF Basin
2024-20	45.2/39.7	96.4/79.0	219.1/142.8	0	-998	-	-	64,950	Stormwater ponds with filtration benches
2024-21	63.69/37.37	117.63/80.63	239.78/173.15	-1.0	-783	-	-	10,445	Stormwater ponds with filtration benches
2024-22	18.63/17.53	41.60/33.61	110.11/100.58	-2.8	-1,335	-	-	22,331	Sedimentation basins and filtration basins
2024-23	10.57/8.09	22.1/19.44	131.53/104.61	-1.4	-2,310	-	6,991	-	Stormwater basins (x2) and land conservation
2024-24	4.6/2.2	9.1/7.9	19.3/15.6	-	-	-	-	6,087	Underground Filtration & Regional Pond
2024-25	5.7/5.0	11.8/10.2	27.0/23.1	0	-74	-	-	5,350	Biofiltration Bench
2024-26	17.2/9.1	29.3/16.8	56.9/34.3	-3.0	-1,051	-	35,322	-	Two NURP Ponds & Irrigation
2024-27	51.6/41.2	94.3/66.6	176/129	-2.0	-878	-	-	46,174	One wet sedimentation pond and two filtration basins
2024-28	43.60/9.38	86.76/21.41	184.48/50.40	-32.8	-35,695	208.3	-	131,676	Filtration basins & existing wetlands
2024-29	61.89/29.63	159.32/141.91	269.35/256.89	-5.3	-476	36,286	-	33,111	Filtration basins
2024-30	38.4/33.1	63.7/55.7	119.3/101.1	-0.6	-706	-	-	44,192	Stormwater ponds with pretreatment & filtration
2024-31	55.1/41.2	109.9/95.1	250.0/221.0	-8.0	-33,026	-	-	96,513	Two biofiltration basins.
2024-32	Project Review still under review								
2024-33	Project Review still under review								



**2023-2025 Operating Budgets – page 1**

Line	Category	2023 Budget	2024 Budget	2025 Budget
<b>EXPENSES</b>				
1	Administrative	100,000	100,000	118,500
2	Grant Writing	0	3,000	3,000
3	Website	2,000	2,000	2,000
4	Legal Services	2,000	2,000	2,000
5	Audit	6,500	7,000	7,200
6	Insurance	4,000	4,000	4,000
7	Meeting Expense	0	4,800	6,000
	<b>Subtotal General Operating Expenses</b>	<b>\$114,500</b>	<b>\$122,800</b>	<b>\$142,700</b>
<b>TECHNICAL SUPPORT</b>				
8	Tech support – HCEE	20,000	22,000	25,000
9	Generation Technical Services	70,000	75,000	78,000
	<b>Subtotal Technical Support</b>	<b>\$90,000</b>	<b>\$97,000</b>	<b>\$103,000</b>
<b>PROJECT REVIEWS</b>				
10	Technical Reviews	184,000	184,000	162,000
11	Administrative Support	16,000	21,250	20,000
	<b>Subtotal Project Reviews</b>	<b>\$200,000</b>	<b>\$205,250</b>	<b>\$182,000</b>
<b>EDUCATION</b>				
12	Education – City/Citizen Programs	2,000	2,000	2,000
13	West Metro Water Alliance	11,500	11,500	15,000
	<b>Subtotal Education</b>	<b>\$13,500</b>	<b>\$13,500</b>	<b>\$17,000</b>
<b>WATERSHED MANAGEMENT PLAN</b>				
14	Plan Amendments	2,000	2,000	500
15	Contribution to 4th Generation Plan	12,500	12,500	0
	<b>Subtotal Watershed Management Plan</b>	<b>\$14,500</b>	<b>\$14,500</b>	<b>\$500</b>
<b>WATER OBSERVING PROGRAMS</b>				
	<i>Stream Monitoring</i>			
16	USGS Site Share	24,000	12,500	21,520
17	TRPD-Routine Monitoring	10,020	10,020	11,730
18	Biological Monitoring	4,500	0	0
19	DO Longitudinal Survey	2,400	2,400	2,400
20	Partnership Biomonitoring	2,000	0	0
21	Gauging Station – Electric Bill	440	480	480
	<b>Subtotal Stream Monitoring</b>	<b>\$43,360</b>	<b>\$25,400</b>	<b>\$36,130</b>

**2023-2025 Operating Budgets – page 2**

Line	Category	2023 Budget	2024 Budget	2025 Budget
	<i>Lake Monitoring</i>			
22	CAMP	840	840	840
	TRPD			
23	Sentinel Lakes + Additional Lake	10,412	10,412	12,360
24	Aquatic Vegetation Surveys	1,365	1,365	1,365
	<b>Subtotal Lake Monitoring</b>	<b>\$12,617</b>	<b>\$12,617</b>	<b>\$14,565</b>
	<i>Other Monitoring</i>			
25	Macroinvertebrate Monitoring-River Watch	0	3,000	0
	<b>Subtotal Other Monitoring</b>	<b>\$0</b>	<b>\$3,000</b>	<b>0</b>
	<b>Subtotal Monitoring Expense</b>	<b>\$55,977</b>	<b>\$41,107</b>	<b>\$50,695</b>
	<b>TOTAL GEN OPERATING EXP</b>	<b>\$488,477</b>	<b>\$494,067</b>	<b>\$495,895</b>
	<b>REVENUE</b>			
26	Membership Dues	250,000	250,000	257,000
27	Interest Income	500	10,000	30,000
28	Dividend Income	250	0	0
29	TRPD Cooperative Agreement	6,500	6,500	6,500
30	From Cash Reserves	0	0	20,395
	<b>Subtotal General Operating Revenue</b>	<b>\$257,250</b>	<b>\$266,500</b>	<b>\$313,895</b>
31	Project Review Fees	184,000	184,000	162,500
32	Nonrefundable Admin	16,000	21,250	7,500
33	Nonrefundable Tech	17,000	27,600	12,000
	<b>Subtotal Project Review Revenue</b>	<b>\$217,000</b>	<b>\$232,850</b>	<b>\$182,000</b>
	<b>TOTAL GEN OPERATING REVENUE</b>	<b>\$474,250</b>	<b>\$499,350</b>	<b>\$495,895</b>
	<b>OPERATING SURPLUS OR (DEFICIT)</b>	<b>(\$14,227)</b>	<b>\$5,283</b>	<b>\$0</b>

### 2023-2025 Member Assessments

2023	2022 Taxable Market Value	2023 Budget Share		Increase over Prev Year	
		%age	Dollars	%age	Dollars
Champlin	807,005,389	3.9	9,854	5.4	505
Corcoran	1,544,836,780	7.5	18,864	15.5	2,539
Dayton	1,644,909,207	8.0	20,086	29.5	4,573
Maple Grove	9,535,464,544	46.6	116,436	2.3	2,581
Medina	1,515,134,760	7.4	18,501	0.5	96
Plymouth	2,517,439,300	12.3	30,740	5.1	1,486
Rogers	2,908,759,834	14.2	35,519	2.7	921
<b>Totals</b>	<b>20,473,549,814</b>	<b>100.0</b>	<b>250,000</b>	<b>5.35%</b>	<b>12,700</b>
2024	2023 Taxable Market Value	2024 Budget Share		Increase over Prev Year	
		%age	Dollars	%age	Dollars
Champlin	898,761,000	4.0	9,998	1.5	144
Corcoran	1,808,292,200	8.0	20,116	6.6	1,252
Dayton	2,031,786,500	9.0	22,602	12.5	2,516
Maple Grove	10,043,624,100	44.7	111,726	-4.0	-4,711
Medina	1,680,727,800	7.5	18,697	1.1	195
Plymouth	2,671,442,700	11.9	29,717	-3.3	-1,023
Rogers	3,339,194,100	14.9	37,145	4.6	1,627
<b>Totals</b>	<b>22,473,828,400</b>	<b>100.0</b>	<b>250,000</b>	<b>0.0%</b>	<b>0</b>
2025	2024 Taxable Market Value	2025 Budget Share		Increase over Prev Year	
		%age	Dollars	%age	Dollars
Champlin	1,161,197,800	5.1	13,151	31.5	3,153
Corcoran	1,806,478,300	8.0	20,459	1.7	344
Dayton	2,038,390,200	9.0	23,086	2.1	484
Maple Grove	10,089,589,600	44.5	114,270	2.3	2,544
Medina	1,684,881,900	7.4	19,082	2.1	386
Plymouth	2,570,902,100	11.3	29,117	-2.0	-601
Rogers	3,340,724,100	14.7	37,835	1.9	690
<b>Totals</b>	<b>22,692,164,000</b>	<b>100.000</b>	<b>257,000</b>	<b>2.8%</b>	<b>7,000</b>



## 2024 Hennepin County Projects - 1

Recited below are updates on projects initiated in 2022-2024. Many of the projects were first introduced in the *2023 Annual Report*.

Funding sources for these projects include **(a)** from a federal agency Natural Resources Conservation Services, (NRCS); **(b)** state agency (Watershed-Based Implementation Fund [WBIF]) or another grant; **(c)** local entity (the Elm Creek Watershed Management Commission Capital Improvement Program [CIP]); **(d)** Hennepin County; or **(e)** the landowner.

### Bottema Wetland Restoration (Corcoran)

This project was working with a landowner to restore seven wetlands and re-establish 42 acres of cropland to prairie. Hennepin County helped design the project which was installed in late 2023. The project was paired with another on the same property by the US Fish & Wildlife Service, restoring an additional eight wetlands and 38 acres of prairie. Seeding occurred to address areas disturbed by construction activities.

Many communities in western Hennepin County received significant rainfall last fall. Corcoran saw a 100-year rainfall event followed up by a 10-year rainfall event just days apart, occurring just after construction activities concluded and before vegetation could



## 2024 Hennepin County Projects – 2

### Bottema, *contd.*

be established. The remainder of 2024 was taken up working with the landowner and the engineering team to address the erosion. Designs were finalized in late summer and a contractor selected; however, freezing ground prevented construction in/around the wetland areas to occur in 2024. The contractor plans to conduct work early in 2025 once site conditions allow. Project agreements will be extended to allow for construction and restoration activities to continue into 2025. Funding sources: **b, c, d, e.**

---

### Christian Settling Basin (Dayton)

Hennepin County staff are working with the landowner of two parcels with a rare fen onsite. The goal of this project is to reduce sediment by 8.38 tons/year and phosphorus by 7.89 pounds/year from reaching this wetland from a neighboring crop field. The project will help slow runoff and let sediment settle out before it has a chance to reach the open water wetland.

Wet conditions also affected this project. Construction began on the settling basin in December. All tree grubbing, excavation, and smoothing has been completed. Rip-rap at the inlet and outlet will need to be installed along with seeding next year to fully complete the project. The Contractor installed erosion control measures to prevent sedimentation from the bare neighboring field during construction. Funding sources: **b, c, d, e.**



### 2024 Hennepin County Projects - 3

#### City of Corcoran

In September, City of Corcoran staff contacted Hennepin County staff with interest in a cover crop planting for fallow city-owned farm fields just north of Corcoran City Hall. Staff recommended a perennial planting that should increase available habitat, decrease erosion, and reduce needed maintenance.

The County developed a plan to replant 27 acres of fallow farmland with a native mesic tallgrass prairie seed mix. Staff sought feedback from the City on what aspects of maintenance could be performed by the Public Works Department, and which would require an ecological services contractor. Using RUSLE2, Staff were able to determine that this project would reduce 2.78 tons of sediment and 4.48 pounds of phosphorus runoff annually in the South Fork Rush Creek subwatershed.

At year-end, County staff were working with City staff to find ideal time and conditions for seeding. Hennepin County will perform soil tests to track progress over time. Funding sources: **b, c, d, e.**

---

#### Stotts 1A/1B/Top of Hill Waterway (Corcoran)

This project is the installation of a water and sediment control basin (WASCOB) to control sediment erosion from the farm field to the west of the property. The landowners are currently working with their neighbor to negotiate the siting of the practice. Updates and repairs are also being made to a grassed waterway that was installed in 2021 but has suffered some erosion due to heavy storms immediately after construction.



Repairs to a WASCOB that was previously installed were made in December 2024. The repairs included a gravel curtain and perforated tile to help redirect a seep in the hillside away from the waterway. The landowner also installed rip-rap at the end of 1A grassed waterways. This concludes work for this phase of the project that includes six grassed waterways which will reduce 79.44 pounds of phosphorus and 39.72 tons of sediment from reaching Jubert Lake each year. Funding sources: **c, d, e.**

---

## 2024 Hennepin County Projects – 4

### Van Asten Manure Bunker and Cover Crops (Dayton)

Working with landowner as parcel is converted from row crop farm to perennial pasture for grazing livestock and horses. Have already implemented cool season cereal rye as a nurse crop. Staff worked with the landowner to develop a multispecies cover crop for the growing season of 2024. The mix included a diverse seed mix that will help reduce compaction, enhance soil health, and provide forages for livestock and horses. Again, wet field conditions delayed cover crop planting but it was successfully completed within the recommended window.

This landowner is working on overall farm plan, which may require the movement or edits of the manure bunker plans. For example, the landowner is considering adding beef cattle which may require a larger bunker area. Staff are working on manure production and storage need calculations for the maximum allowable animal units onsite.

The landowner met with NRCS staff to discuss EQIP funding for prescribed grazing, pasture planting, fencing, and other grazing infrastructure. Staff determined that barn gutters would be helpful to prevent erosion around the barn area. Positioning for the manure bunker is close to being finalized in order to provide the best opportunities for usage and management. County staff also inspected the warm season cover crop that was planted in the year. They noted excellent diversity of crops and that there are several active benefits including weed suppression and breaking up of compacted soils previously observed on site. Landowner will be planting pasture in 2025. Funding sources: **b, c, d, e.**



---

### Welcome Ranch BMPs (Dayton)

Working with the operator of this horse boarding facility to develop BMPs that will help reduce erosion and potential nutrient runoff from manure. Currently working to design manure bunker for storage and composting.

In July, Hennepin County staff performed a site visit to understand the new manager's

## 2024 Hennepin County Projects - 5

### Welcome Ranch. *contd.*

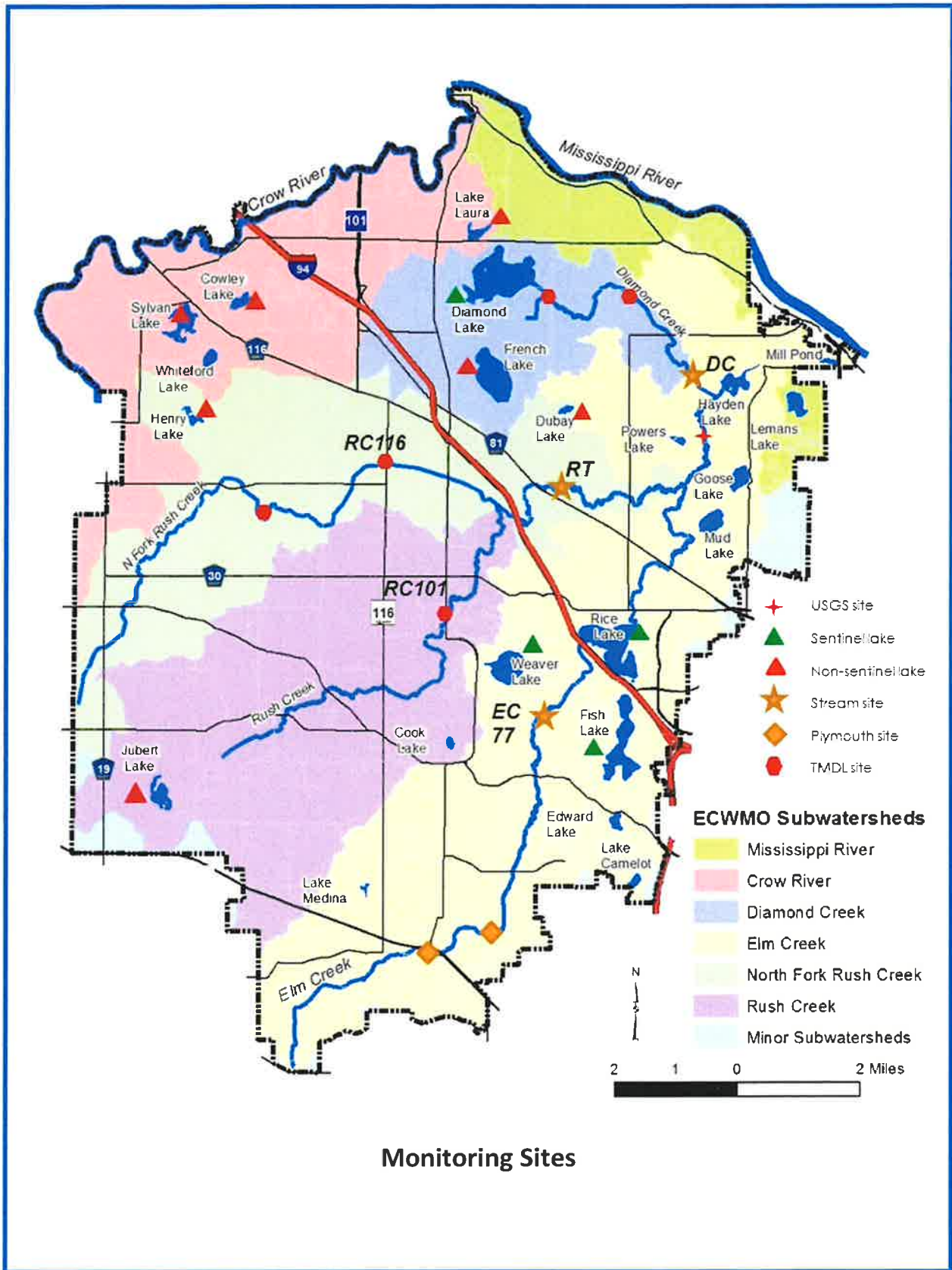
goals and needs for conservation projects. Staff have developed a conceptual plan that includes a large manure bunker, exclusionary fencing, barn gutters, and heavy use area protections. There is also potential to develop a grazing plan for the 24 horses on-site. Installation for Phase 1 (barn gutters, fencing, and heavy use area protection) was slated for installation in late summer/fall 2024. Construction was delayed due to wet site conditions and to allow for an application for federal funding assistance.



The following month, the landowners/ operators worked with NRCS staff to submit a 2025 EQIP application. Landowners are interested in designing a gutter system over the winter to be installed in early spring.

Hennepin County will continue to work with the landowners through the contracting process to install gutters, heavy use area protections and grazing best management practices in early 2025. Funding sources: to be determined.

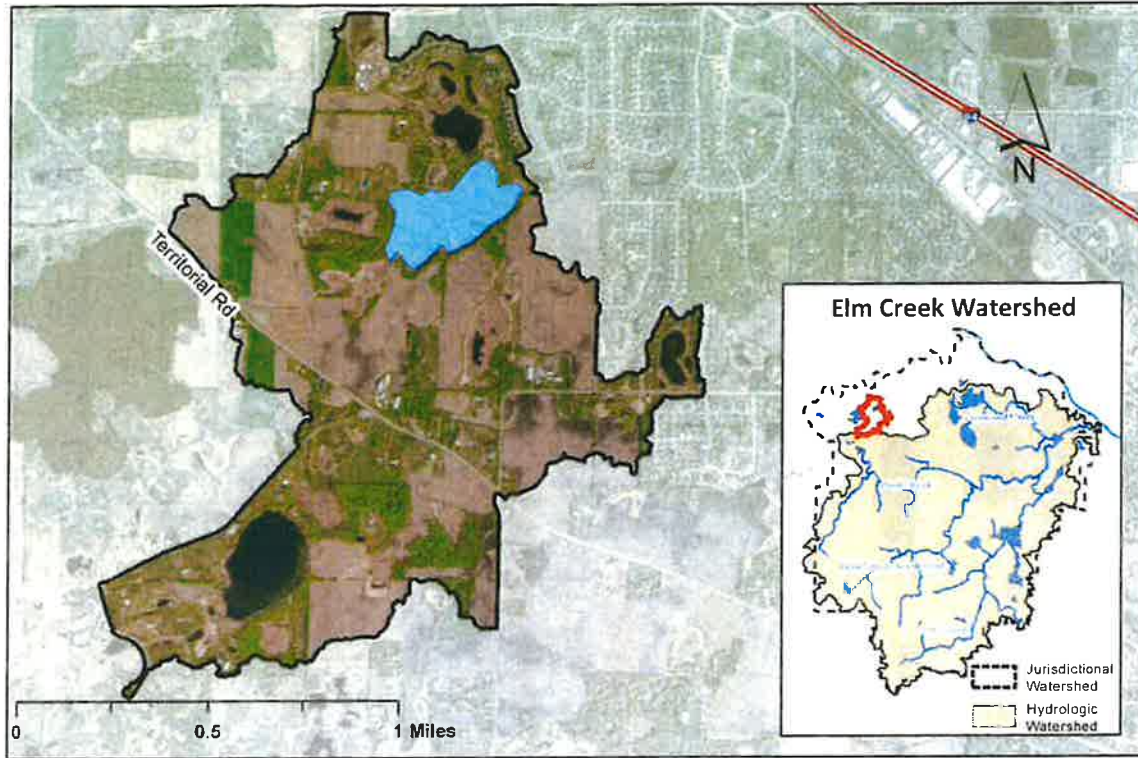




Monitoring Sites

## Cowley Lake

### Cowley Watershed Map



### Cowley Bathymetry



#### Lake and Watershed Characteristics

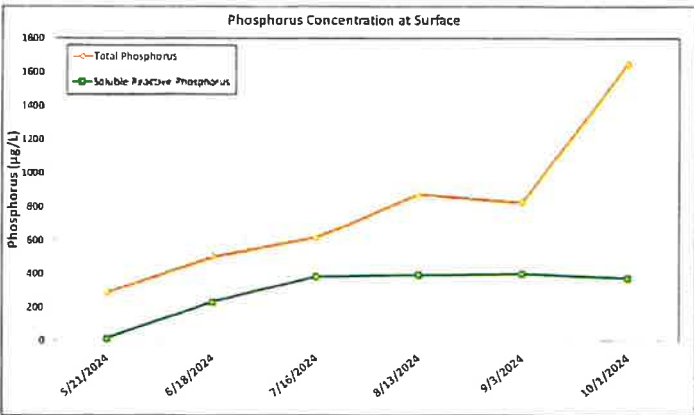
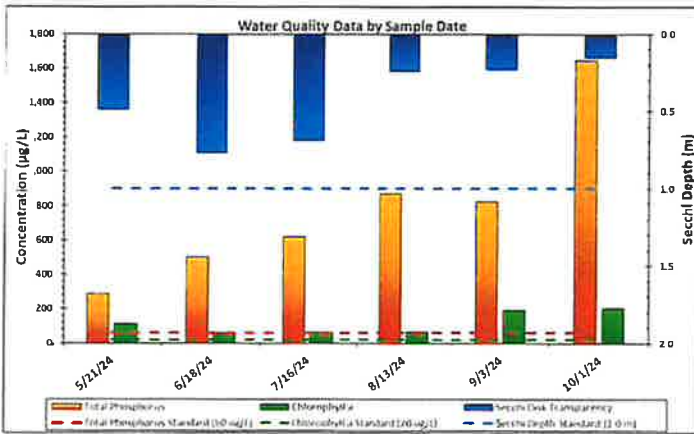
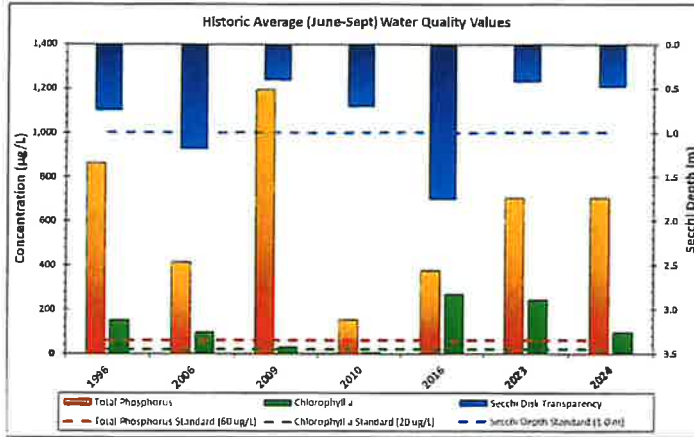
DNR #	27016900
Watershed Area	853 Acres
Lake Area	34 Acres
Percent Littoral Area	100%
Average Depth	4.7 ft.
Maximum Depth	8 ft.
Watershed Area:Lake Area	25.1:1
Impairment Classification	Excess Nutrients 2017
Classification	Shallow Lake

Water Resource Department  
 Map Created: 12/12/2023  
 Revised Date: 12/12/2023

This map is a compilation of data from various sources and is provided "as is" without warranty of any representation of accuracy, timeliness, or completeness. The user acknowledges and accepts the limitations of the Data, including the fact that the Data is dynamic and in a constant state of maintenance, correction, and update.



### Cowley Lake



Cowley Lake Water Quality Report Card				
Year	TP	Chl-a	Secchi	Avg Grade
1996*	F	F	D	F
2006*	F	F	D	F
2009*	F	C	F	D-
2010*	D	A	D	C
2016*	F	F	C	D-
2023	F	F	F	F
2024	F	F	F	F
<b>MPCA Standard</b>	C	C	D	C-

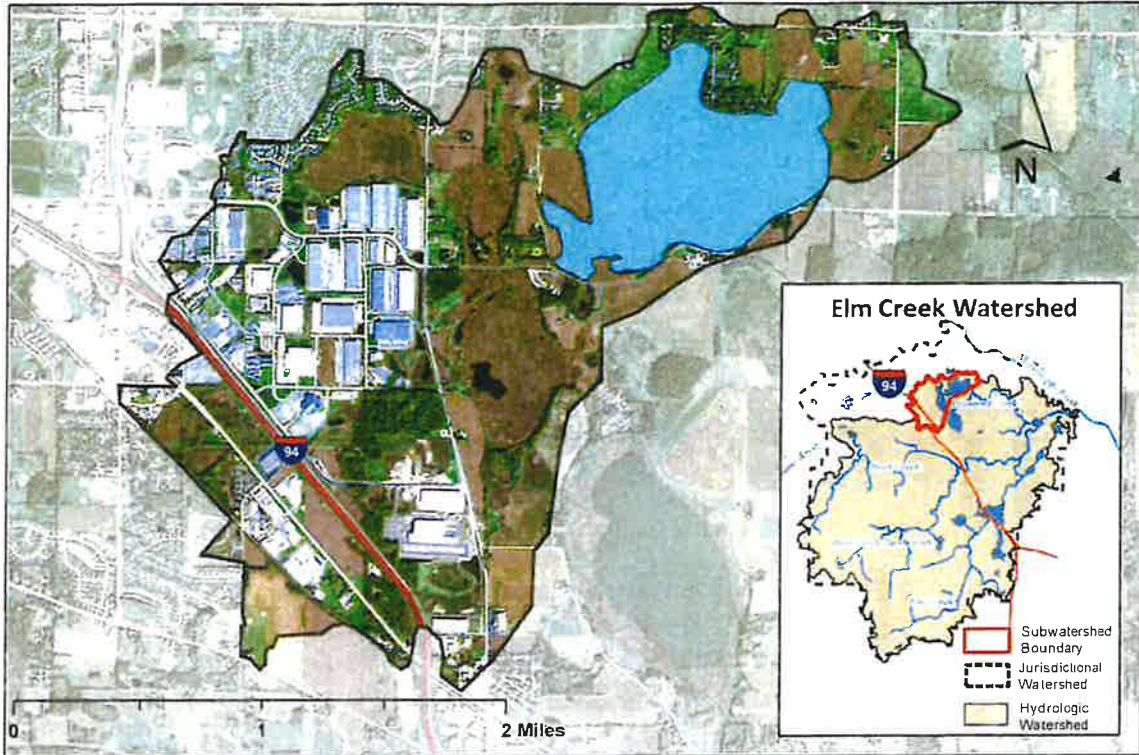
Met Council Grading System for Lake Water Quality

\*Data collected by volunteers for Met Council



## Diamond Lake

### Diamond Lake Watershed Map



### Diamond Lake Bathymetry



#### Lake and Watershed Characteristics

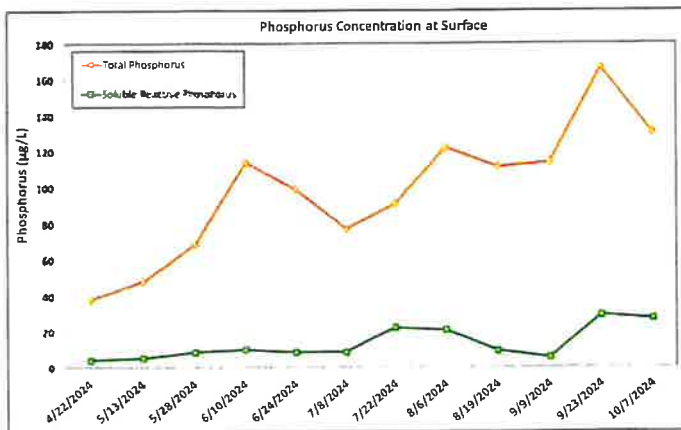
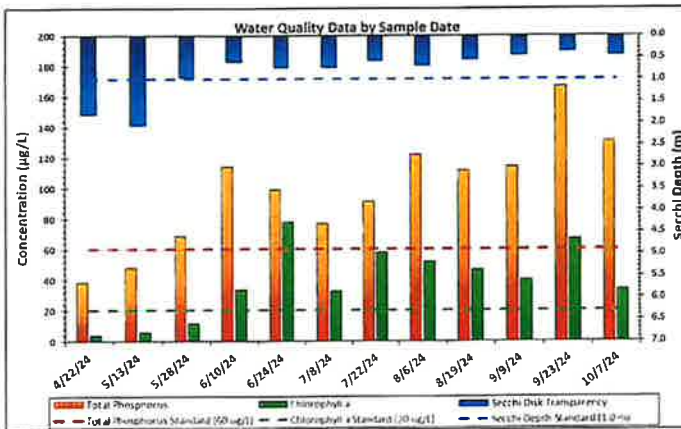
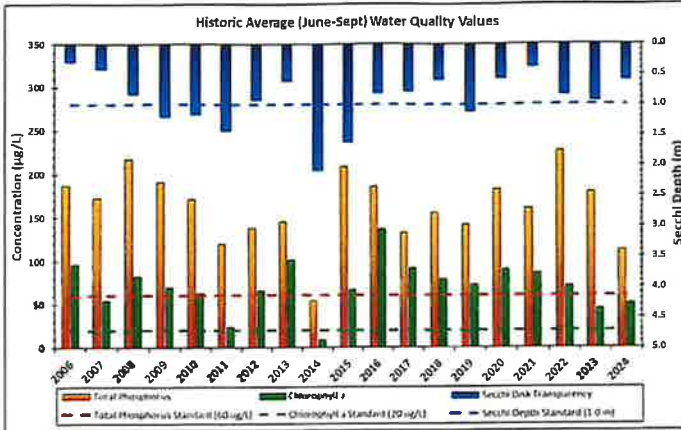
DNR #	27012500
Watershed Area	2,367 Acres
Lake Area	382 Acres
Percent Littoral Area	100%
Average Depth	3.97 ft.
Maximum Depth	7.37 ft.
Watershed: Lake Ratio	6.2:1
Impairment	Excess Nutrients in 2006
Classification	Shallow Lake

Water Resource Department  
 Map Created: 11/24/2017  
 Revised Date: 12/4/2017

This map is a compilation of data from various sources and is provided "as is" without warranty of any representation of accuracy, timeliness, or completeness. The user acknowledges and accepts the limitations of the Data, including the fact that the Data is dynamic and in a constant state of maintenance, correction, and update.



### Diamond Lake



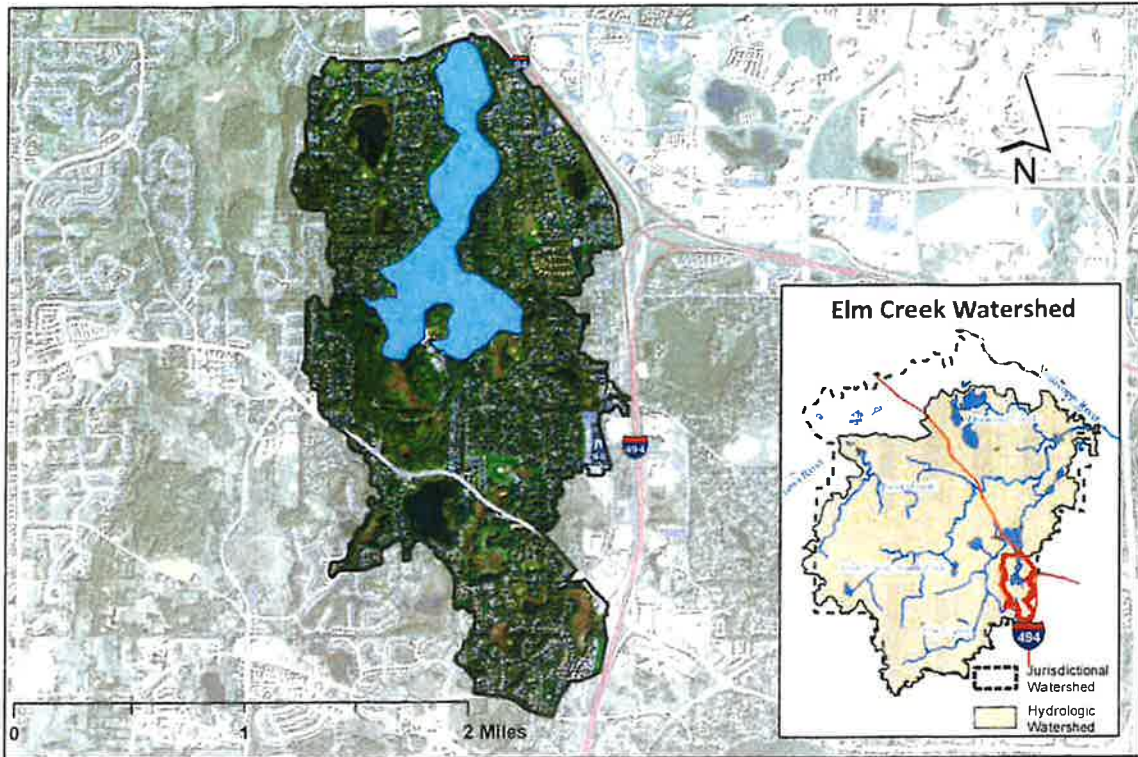
Diamond Lake Water Quality Report Card				
Year	TP	Chl-a	Secchi	Avg Grade
1998	D	D	F	D-
2000	F	F	F	F
2003	F	F	F	F
2004	F	D	F	F
2006	F	F	F	F
2007	F	D	F	F
2008	F	F	D	F
2009	F	D	C	D
2010	F	D	D	D-
2011	D	C	C	C-
2012	D	D	D	D
2013	D	F	F	F
2014	C	A	C	B-
2015	F	D	C	D
2016	F	F	D	F
2017	D	F	D	D-
2018	F	F	F	F
2019	D	D	D	D
2020	F	F	F	F
2021	F	F	F	F
2022	F	D	D	D-
2023	F	C	D	D
2024	D	D	F	D-
<b>MPCA Standard</b>	C	C	D	C-

Met Council Grading System for Lake Water Quality



## Fish Lake

### Fish Lake Watershed Map



### Fish Lake Bathymetry



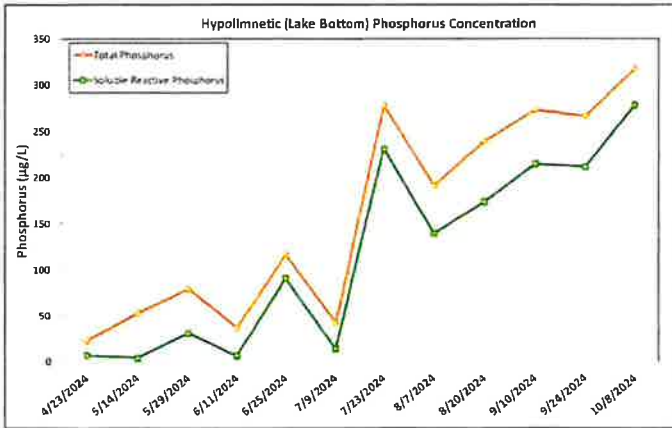
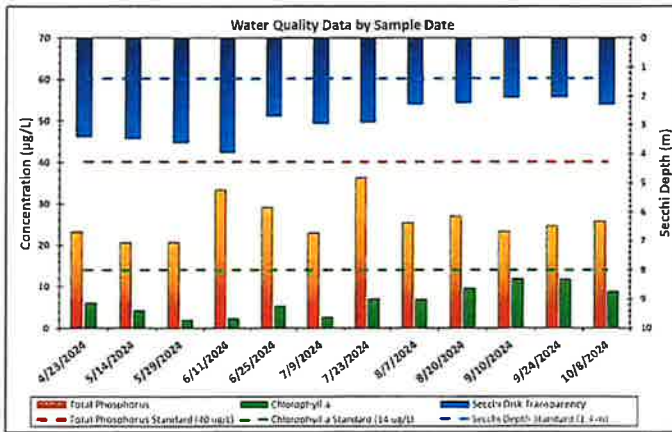
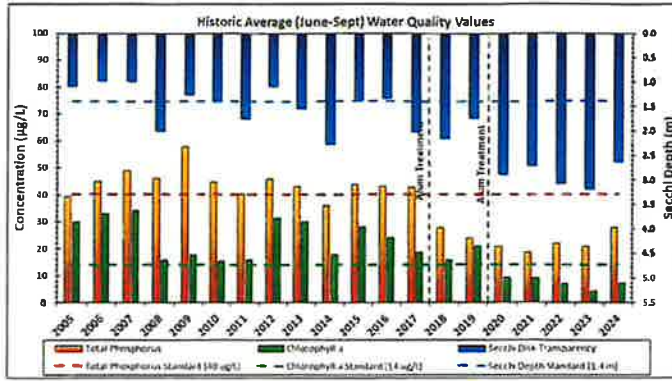
Lake and Watershed Characteristics	
DNR #	27011800
Watershed Area	1,611 Acres
Lake Area	232 Acres
Percent Littoral Area	32%
Average Depth	20.5 ft.
Maximum Depth	49 ft.
Watershed:Lake Ratio	6.9:1
Impairment	Excess Nutrients in 2008 Planned De-listing 2024
Classification	Deep Lake

Water Resource Department  
 Map Created: 11/24/2017  
 Revised Date: 1/27/2023

This map is a compilation of data from various sources and is provided "as is" without warranty of any representation of accuracy, timeliness, or completeness. The user acknowledges and accepts the limitations of the data, including the fact that the data is dynamic and in a constant state of maintenance, correction, and update.



### Fish Lake



Fish Lake Water Quality Report Card				
Year	TP	Chl-a	Secchi	Avg Grade
1995			C	C
1996			B	B
1997	C	C	C	C
1998	C	B	C	C+
1999	C	B	C	C+
2000	C	A	C	B-
2001	C	B	C	C+
2002	C	C	D	C-
2003	C	C	D	C-
2004	C	C	C	C
2005	C	C	D	C-
2006	C	C	D	C-
2007	C	C	D	C-
2008	C	B	C	C+
2009	C	B	C	C+
2010	C	B	C	C+
2011	C	B	C	C+
2012	C	C	D	C-
2013	C	C	C	C
2014	C	B	B	B-
2015	C	C	C	C
2016	C	C	C	C
2017	C	B	C	C+
2018	B	B	C	B-
2019	B	C	C	C+
2020	A	A	B	A-
2021	A	A	B	A-
2022	A	A	A	A
2023	A	A	A	A
2024	B	A	B	B+
<b>MPCA Standard</b>	C	B	C	C+

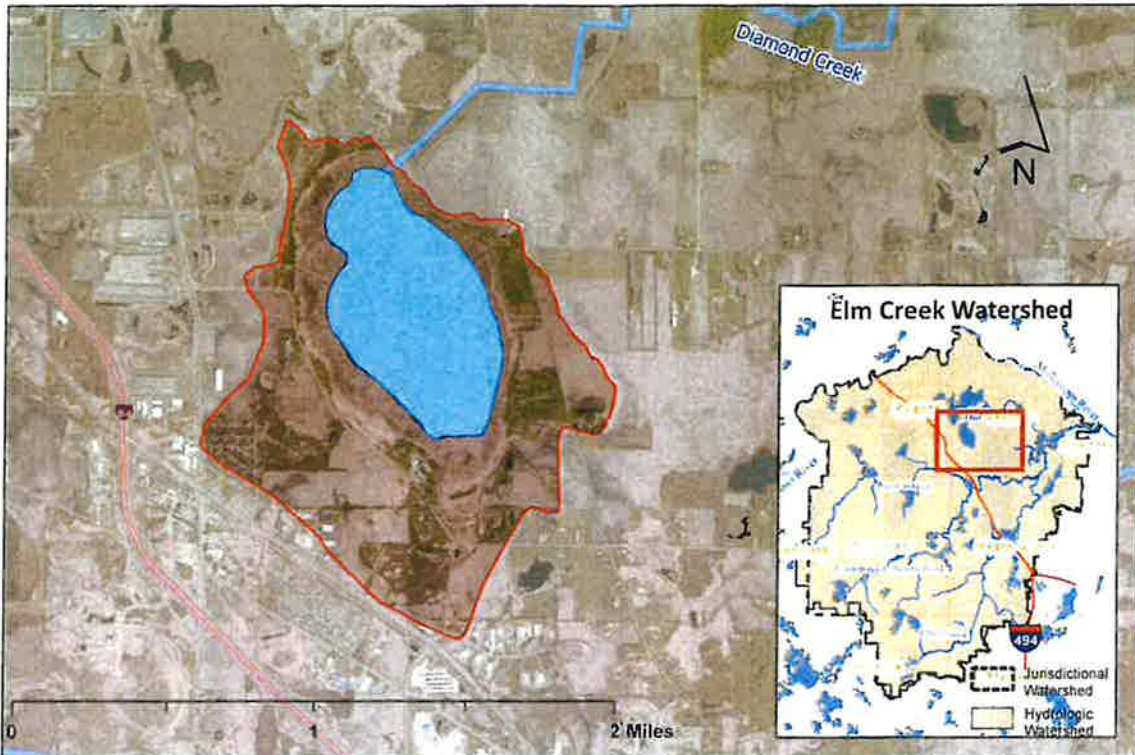
Met Council Grading System for Lake Water Quality



Division of Water Resources  
December 2024

## 2024 French Lake

### French Watershed Map



### Bathymetry

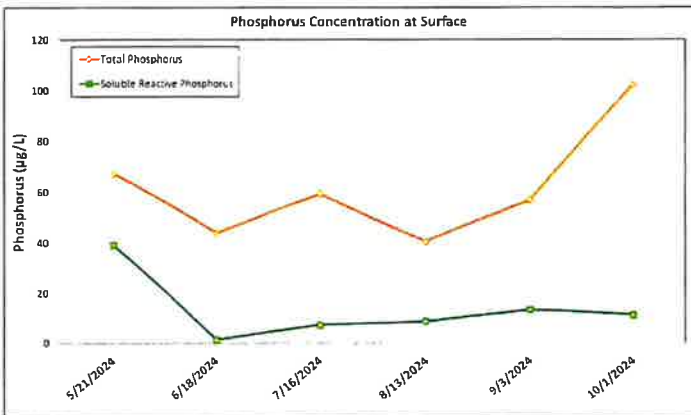
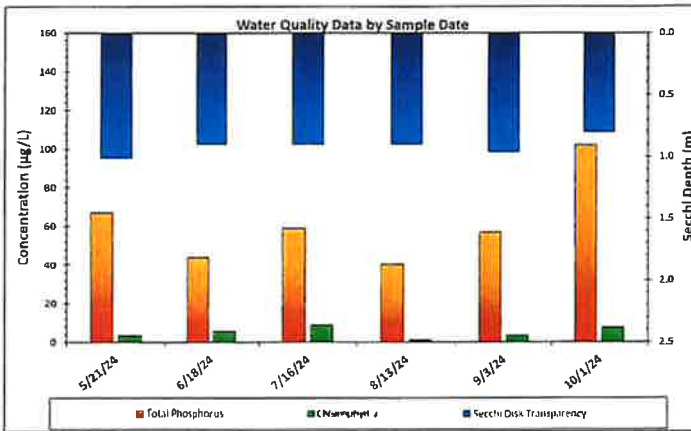
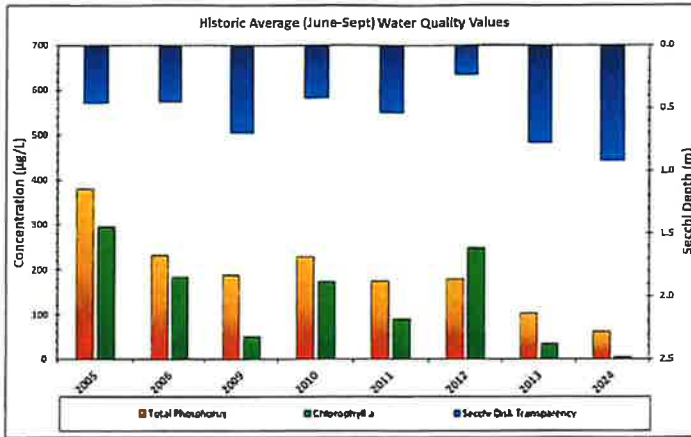


Lake and Watershed Characteristics	
DNR #	27012700
Watershed Area	845 Acres
Lake Area	217 Acres
Percent Littoral Area	100%
Average Depth	2.5 ft.
Maximum Depth	4.5 ft.
Watershed Area: Lake Area	3.9:1
Impairment Classification	None
Classification	Wetland

Water Resource Department  
 Map Created: 11/24/2017  
 Revised Date: 2/12/2025

This map is a compilation of data from various sources and is provided "as is" without warranty of any representation of accuracy, timeliness, or completeness. The user acknowledges and accepts the limitations of the Data, including the fact that the Data is dynamic and in a constant state of maintenance, correction, and update.

### 2024 French Lake



French Lake Water Quality Report Card				
Year	TP	Chl-a	Secchi	Avg Grade
2005	F	F	F	F
2006	F	F	F	F
2009	F	D	F	F
2010	F	F	F	F
2011	F	F	F	F
2012	F	F	F	F
2013	D	C	D	D+
2024	C	A	D	C+

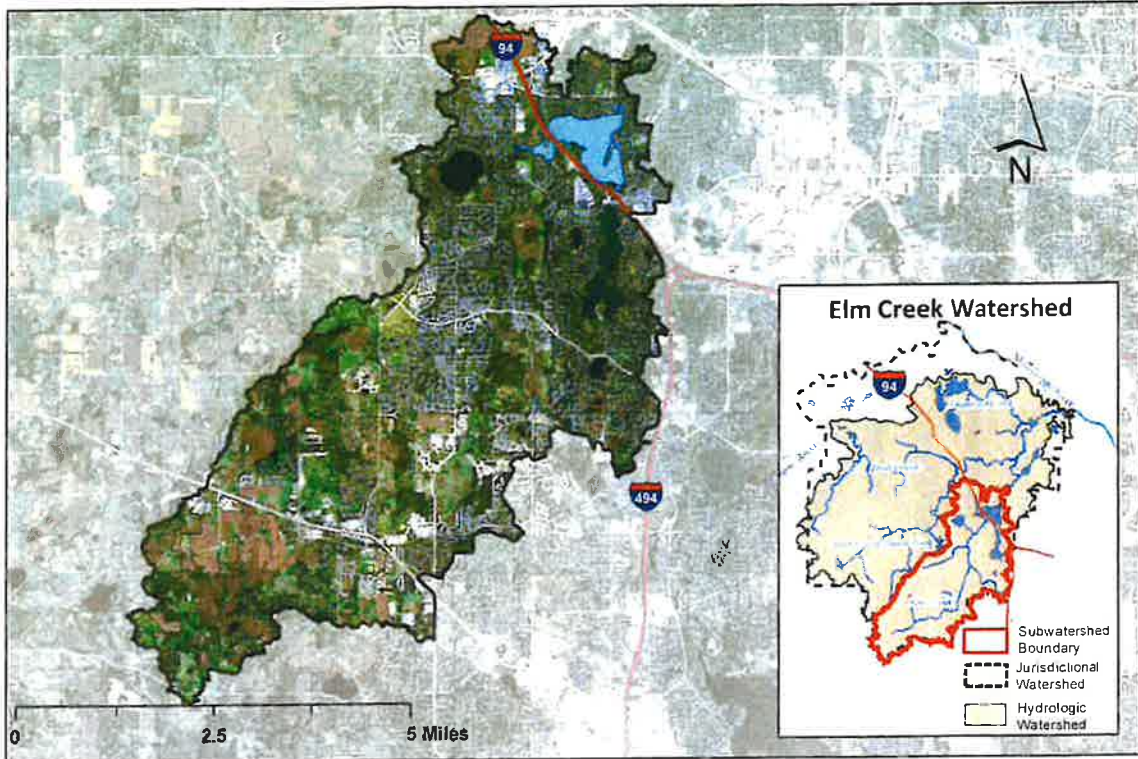
Met Council Grading System for Lake Water Quality

\*Data collected by volunteers for Met Council



## Rice Lake

### Rice Lake Watershed Map



### Rice Lake Bathymetry



#### Lake and Watershed Characteristics

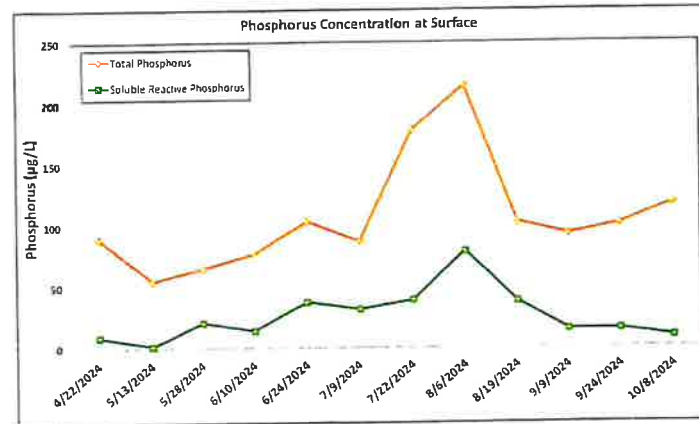
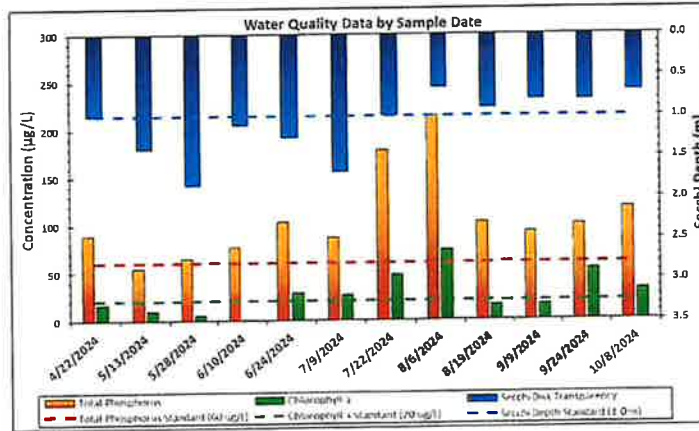
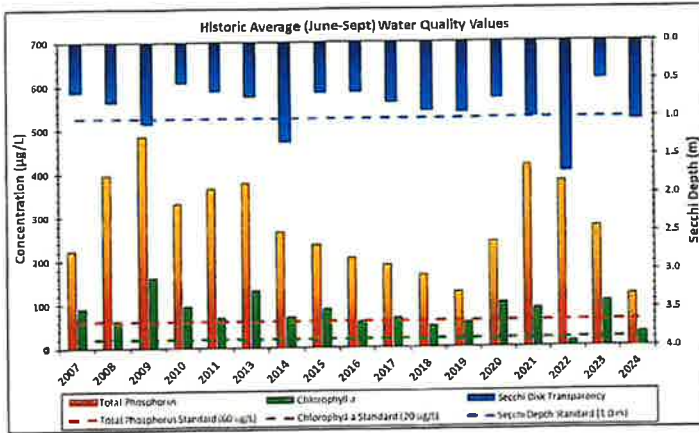
DNR #	27011601
Watershed Area	16,092 Acres
Lake Area	307 Acres
Percent Littoral Area	100%
Average Depth	7.02 ft.
Maximum Depth	10.14 ft.
Watershed:Lake Ratio	52.4:1
Impairment Classification	Excess Nutrients in 2010
	Shallow Lake

Water Resource Department  
 Map Created: 11/24/2017  
 Revised Date: 12/4/2017

This map is a compilation of data from various sources and is provided "as is" without warranty of any representation of accuracy, timeliness, or completeness. The user acknowledges and accepts the limitations of the data, including the fact that the data is dynamic and in a constant state of maintenance, correction, and update.



### Rice Lake



Rice Lake - Main Basin Water Quality Report Card				
Year	TP	Chl-a	Secchi	Avg Grade
2002			D	D
2003			D	D
2004			D	D
2005			D	D
2006			D	D
2007	F	F	F	F
2008	F	D	D	D-
2009	F	F	D	F
2010	F	F	F	F
2011	F	D	F	F
2013	F	F	D	F
2014	F	D	C	D
2015	F	F	F	F
2016	F	D	F	F
2017	F	D	D	D-
2018	F	D	D	D-
2019	D	D	D	D
2020	F	F	D	F
2021	F	F	D	F
2022	F	B	C	C-
2023	F	F	F	F
2024	D	C	D	D+
MPCA Standard	C	C	D	C-

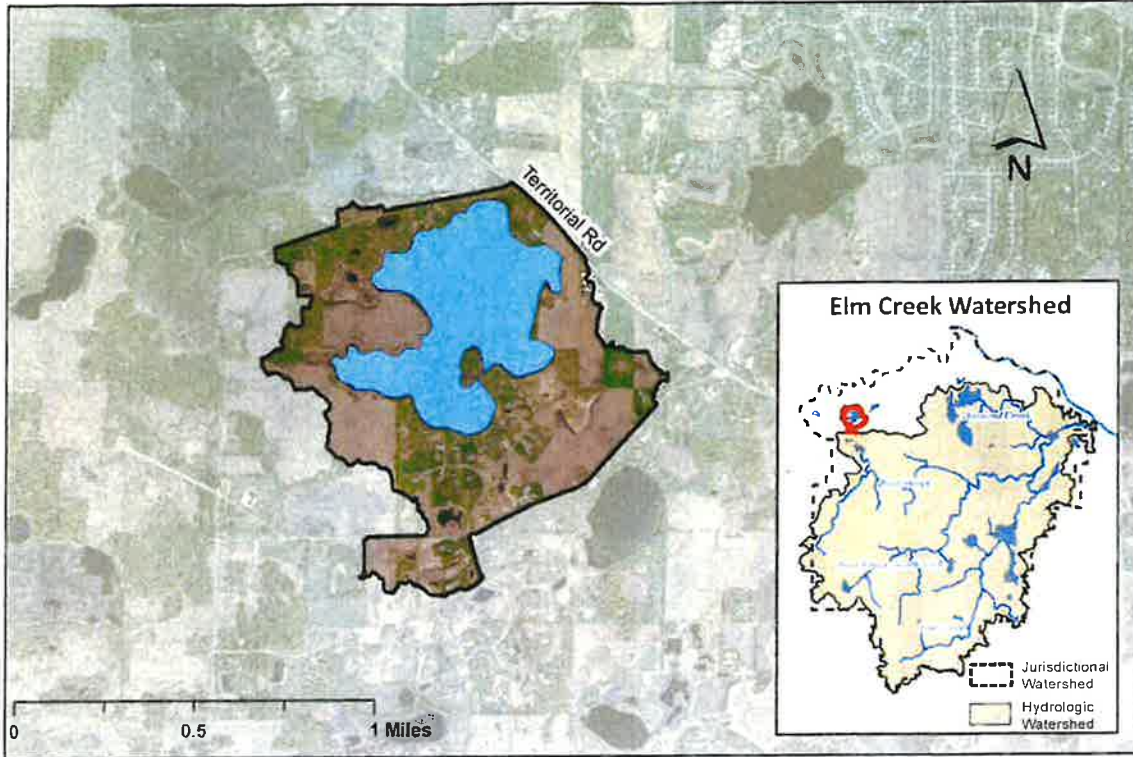
Met Council Grading System for Lake Water Quality



Division of Water Resources  
December 2024

## Sylvan Lake

### Sylvan Watershed Map



### Sylvan Bathymetry



#### Lake and Watershed Characteristics

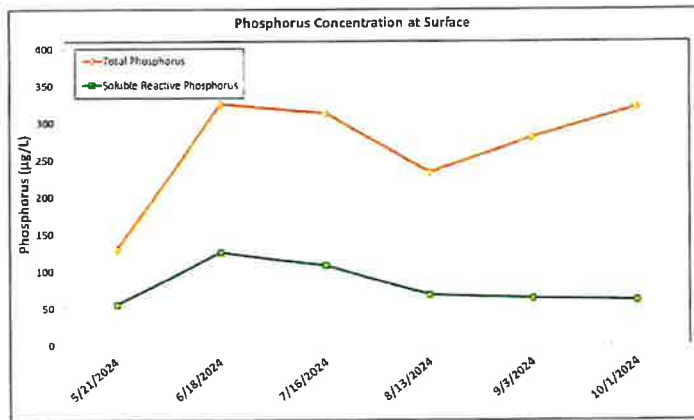
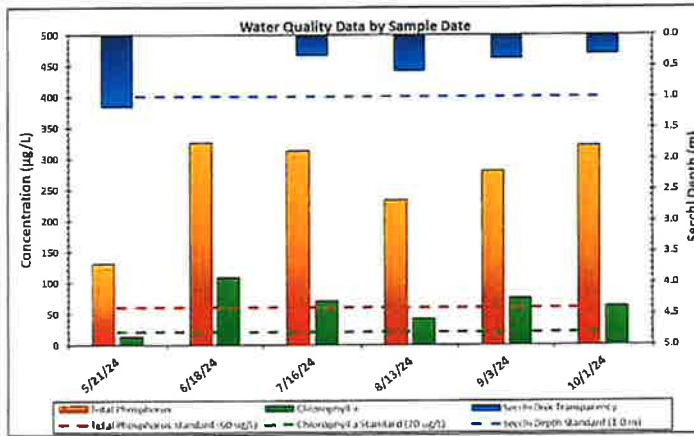
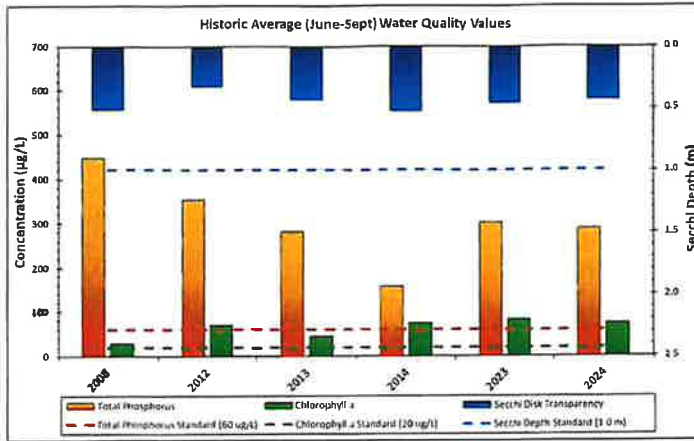
DNR #	27017100
Watershed Area	469 Acres
Lake Area	132 Acres
Percent Littoral Area	100%
Average Depth	6.9 ft.
Maximum Depth	15 ft.
Watershed Area:Lake Area	3.3:1
Impairment Classification	Excess Nutrients 2010
Classification	Shallow Lake

Water Resource Department  
 Map Created: 12/12/2023  
 Revised Date: 12/12/2023

This map is a compilation of data from various sources and is provided "as is" without warranty of any representation of accuracy, timeliness, or completeness. The user acknowledges and accepts the limitations of the Data, including the fact that the Data is dynamic and in a constant state of maintenance, correction, and update.



### Sylvan Lake



Year	TP	Chl-a	Secchi	Avg Grade
2008*	F	C	F	D-
2012*	F	D	F	F
2013*	F	C	F	D-
2014*	F	D	F	F
2023	F	F	F	F
2024	F	D	F	F
MPCA Standard	C	C	D	C-

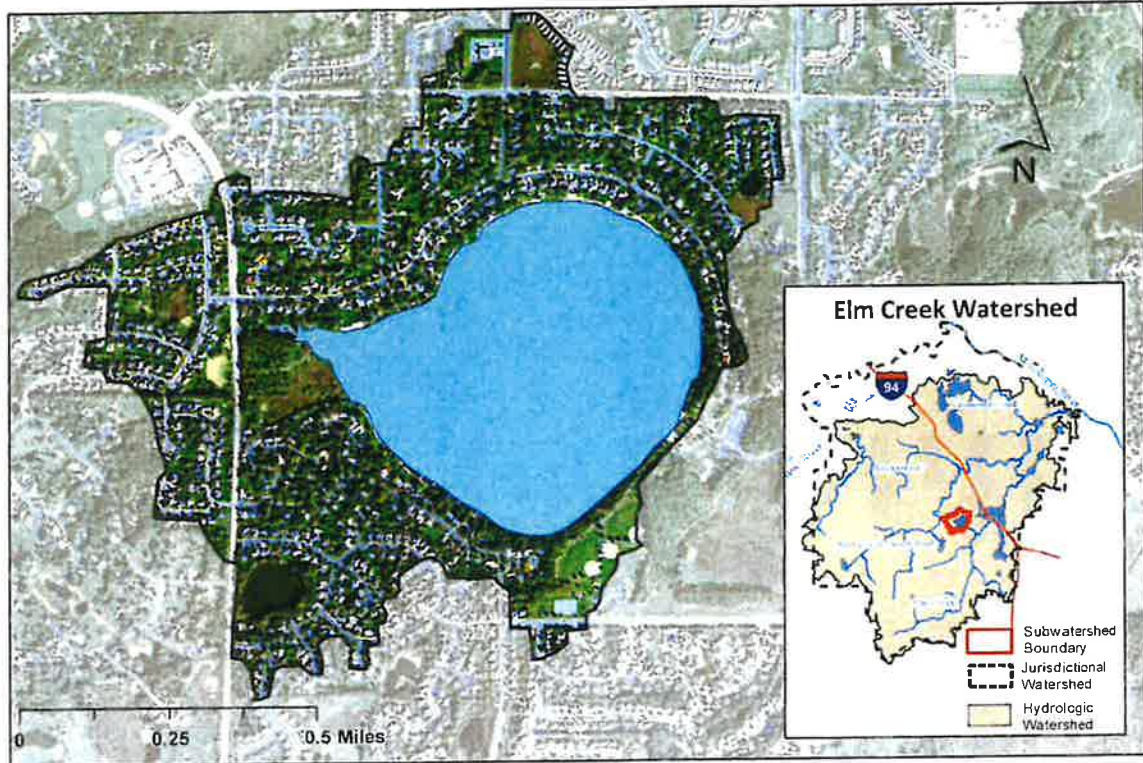
*Met Council Grading System for Lake Water Quality*

*\*Data collected by volunteers for Met Council*



## Weaver Lake

### Weaver Lake Watershed Map



### Weaver Lake Bathymetry



#### Lake and Watershed Characteristics

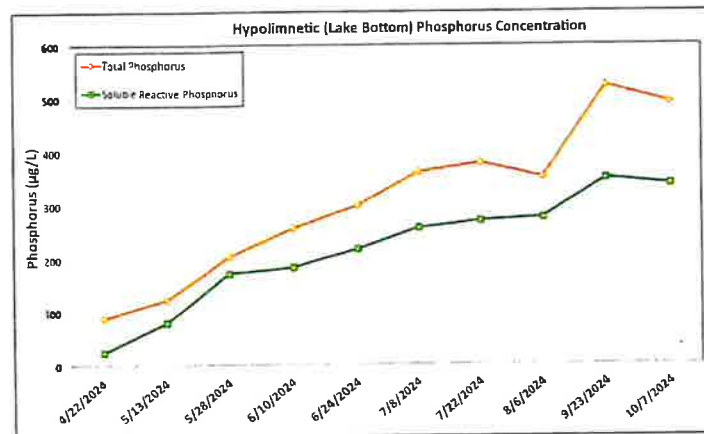
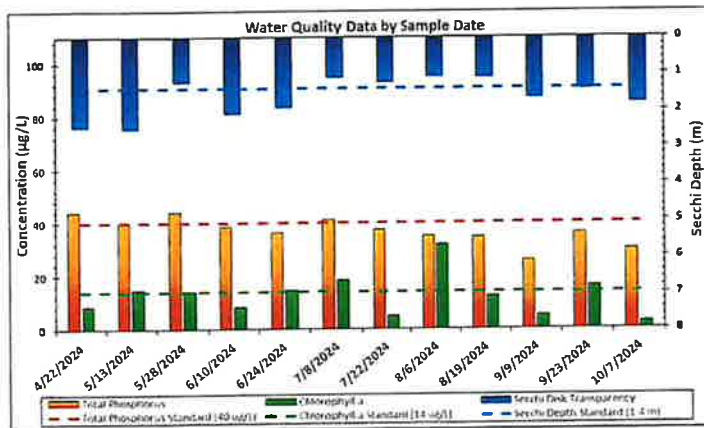
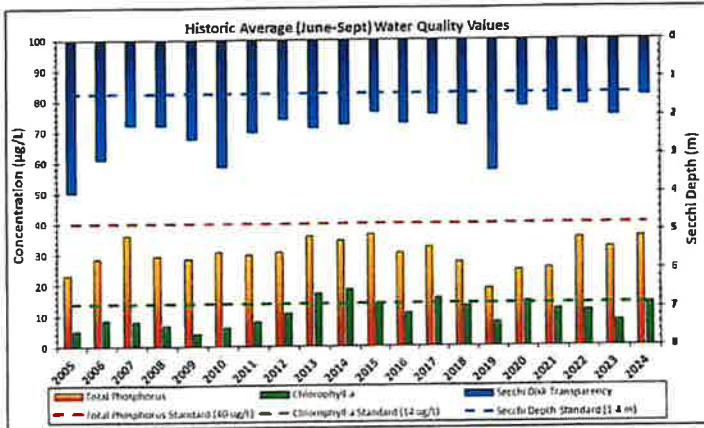
DNR #	27011700
Watershed Area	187 Acres
Lake Area	150 Acres
Percent Littoral Area	47%
Average Depth	21.1 ft.
Maximum Depth	52 ft.
Watershed:Lake Ratio	1.3:1
Impairment	None
Classification	Deep Lake

Water Resource Department  
 Map Created: 11/24/2017  
 Revised Date: 12/4/2017

This map is a compilation of data from various sources and is provided "as is" without warranty of any representation of accuracy, timeliness, or completeness. The user acknowledges and accepts the limitations of the Data, including the fact that the Data is dynamic and in a constant state of maintenance, correction, and update.



### Weaver Lake



Weaver Lake Water Quality Report Card				
Year	TP	Chl-a	Secchi	Avg Grade
1997	B	A	C	B
1998	C	B	C	C+
1999	C	C	C	C
2000	C	B	C	C+
2001	C	C	D	C-
2002	C	C	C	C
2003	C	C	C	C
2004	C	D	C	C-
2005	B	A	A	A-
2006	B	A	A	A-
2007	C	A	B	B
2008	B	A	B	B+
2009	B	A	B	B+
2010	B	A	A	A-
2011	B	A	B	B+
2012	B	B	C	B-
2013	C	B	B	B-
2014	C	B	B	B-
2015	C	B	C	C+
2016	B	B	C	B-
2017	C	B	C	C+
2018	B	B	B	B
2019	A	A	A	A
2020	B	B	C	B-
2021	B	B	C	B-
2022	C	B	C	C+
2023	C	A	C	C-
2024	C	B	C	C+
MPCA Standard	C	B	C	C+

Met Council Grading System for Lake Water Quality



Division of Water Resources  
December 2024

## 2024 Elm Creek Stream Monitoring

### Elm Creek Stream Monitoring – 2024

Monitoring occurred from April 3, 2024, to November 15, 2024. During the entire year there was 38.2 inches of rain. There was significant rainfall throughout the spring, with average rainfall into the summer, but things dried out considerably as fall approached. Five sites were monitored in 2024.

#### DC – Diamond Creek within Elm Creek Park Reserve

- Average flow: 9.43 cfs
- Minimum flow: 0.20 cfs
- Maximum flow: 40.63 cfs

#### EC77 – Elm Creek at Medicine Lake Regional Trail

- Average flow: 25.37 cfs
- Minimum flow: 1.32 cfs
- Maximum flow: 203.85 cfs

#### RC116 – Rush Creek at County Road 116

- Average flow: 18.39 cfs
- Minimum flow: 1.07 cfs
- Maximum flow: 72.21 cfs

#### RCSL – Rush Creek at Shannon Lane

- Average flow: 22.07 cfs
- Minimum flow: 0 cfs
- Maximum flow: 7 cfs

#### RT – Rush Creek at Territorial Road

- Average flow: 49.58 cfs
- Minimum flow: 0.65 cfs
- Maximum flow: 178.76 cfs

## 2024 Elm Creek Stream Monitoring

### Methods

#### Monitoring

- Bi-weekly water grab samples were collected to characterize base flow conditions.
- DC, EC77, RT sites were equipped with ISCO automated samplers and measured water flow using ISCO flow meters. Automated sampling occurred following storm events.
- RC116 and RCSL sites were equipped with Hobo level loggers.
  - Manual discharge measurements and a rating curve was used to estimate flow.
- Parameters monitored included total phosphorus (TP), soluble reactive phosphorus (SRP) total nitrogen (TN), and total suspended solids (TSS).

#### Annual Load Estimate:

- Used U.S. Army Corps of Engineer's FLUX model version 5.0 (Soballe, 2020).
- Concentrations and flow during sample period were input to FLUX to determine the sample period nutrient load.
- Sample period nutrient load was extrapolated to yearly load based on precipitation.
- Concentrations are flow weighted.

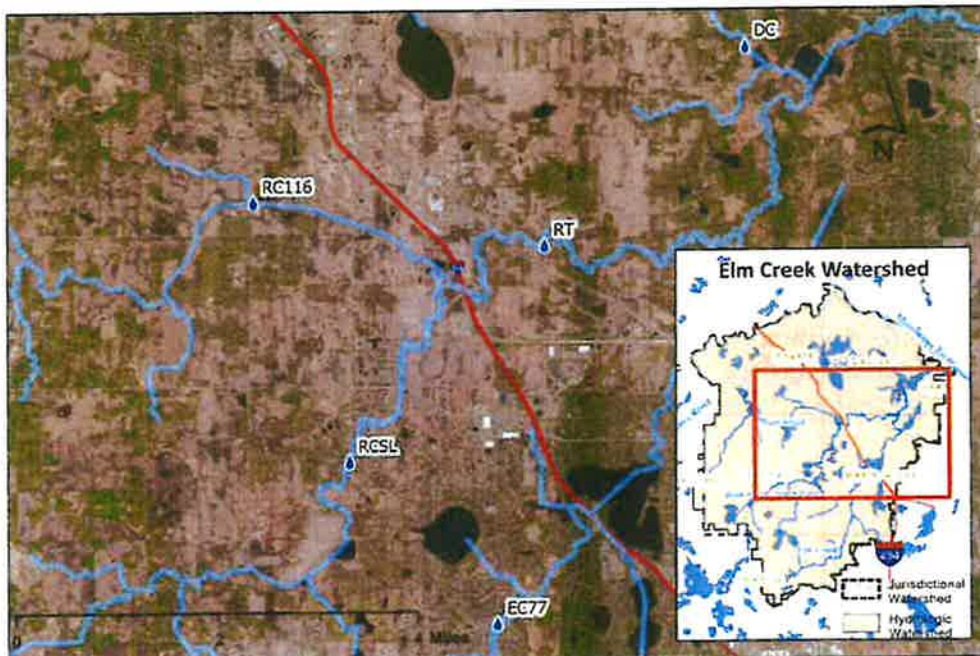


Figure 1. Monitoring site locations within Elm Creek Watershed.

### 2024 Elm Creek Stream Monitoring

#### Sample Concentration and Flux Results

- DC: 26 samples collected – 9 composite and 17 grab samples
- EC77: 25 samples collected – 7 composite and 18 grab samples
- RC116: 14 samples collected – all were grab samples
- RCSL: 14 samples collected – all were grab samples
- RT: 21 samples collected – 5 composite and 16 grab samples

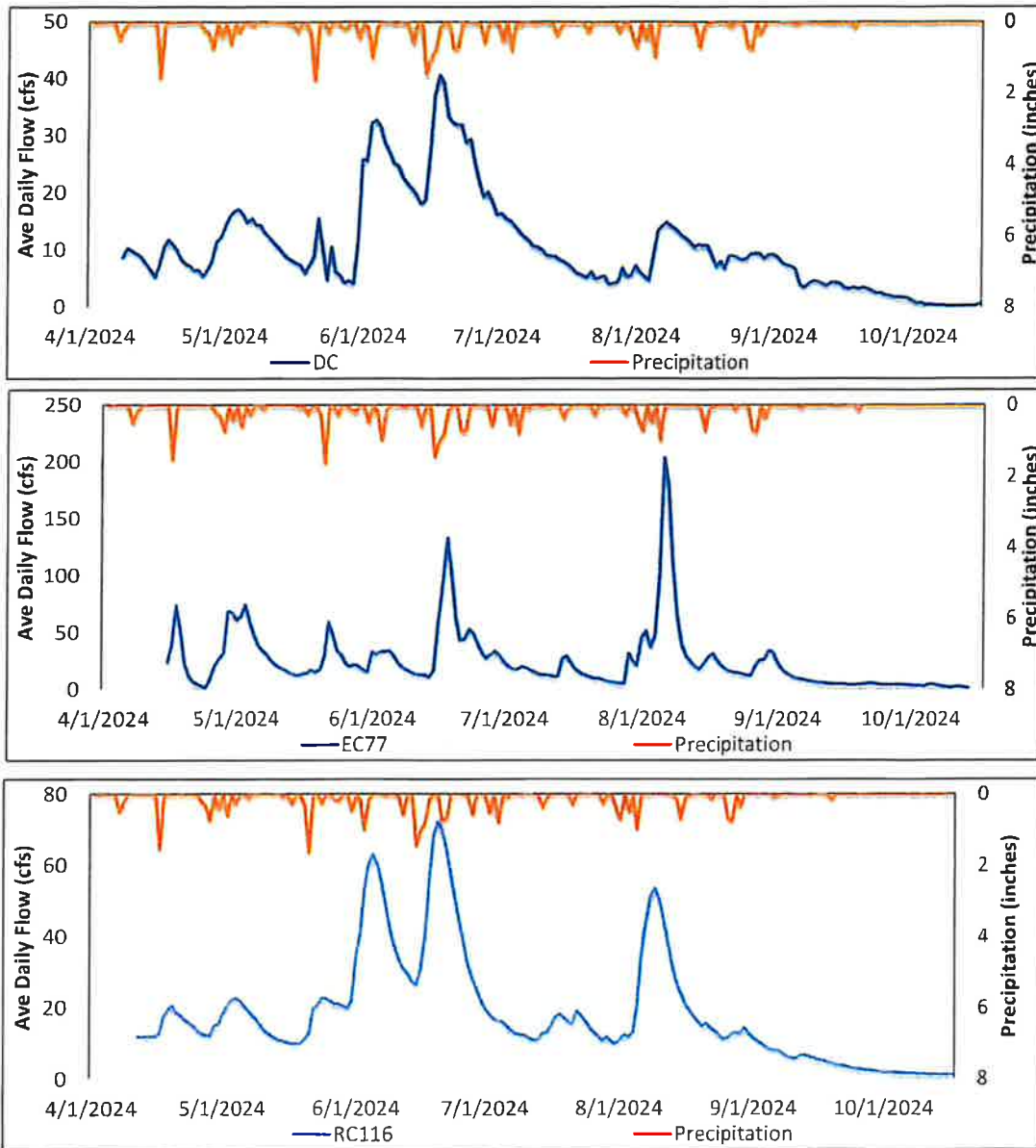
Table 1. Sample concentration average, minimum, and maximum.

Site	Ave TP (min-max) (µg/L)	Ave SRP (min-max) (µg/L)	Ave TN (min-max) (mg/L)	Ave TSS (min - max) mg/l
DC	267 (82 - 468))	131 (16 - 241)	1.3 (0.7 - 2.9)	12.7 (2.0 - 66.7)
EC77	233 (75 - 768)	117 (41 - 236)	1.4 (0.7 - 5.3)	23.6 (1.6 - 279.2)
RC116	381 (125 - 648)	188 (77 - 336)	2.2 (1.0 - 4.3)	8.5 (0.1 - 34.5)
RCSL	384 (108 - 660)	242 (70 - 349)	1.4 (0.9 - 2.2)	5.4 (1.0 - 13.6)
RT	359 (134 - 608)	219 (84 - 352)	1.6 (0.9 - 2.7)	12.6 (1.3 - 67.6)

Table 2. Annual load estimates with flow-weighted concentrations derived from Flux<sub>32</sub>.

Site	Nutrient Loading				Nutrient Concentration				Flow Volume (x 10 <sup>6</sup> m <sup>3</sup> )	Annual Precipitation (inches)
	TP (lbs/yr)	SRP (lbs/yr)	TN (lbs/yr)	TSS (lbs/yr)	TP (µg/L)	SRP (µg/L)	TN (mg/L)	TSS (mg/L)		
DC	3,762.9	2,039.9	15,557	147,330	281.3	152.5	1.16	11.01	6.07	38.2
EC77	7,640.6	3,875	46,052	811,765	227.1	115.2	1.37	24.13	15.26	38.2
RC116	9,894	5480.5	63,200	287,641	388.8	215.4	2.48	11.30	11.54	38.2
RCSL	11,557	7706.1	38,825	120,914	378.2	252.2	1.27	3.96	13.86	38.2
RT	24,717.2	16,273.7	106,131	514,412	351.3	231.3	1.51	7.31	31.92	38.2

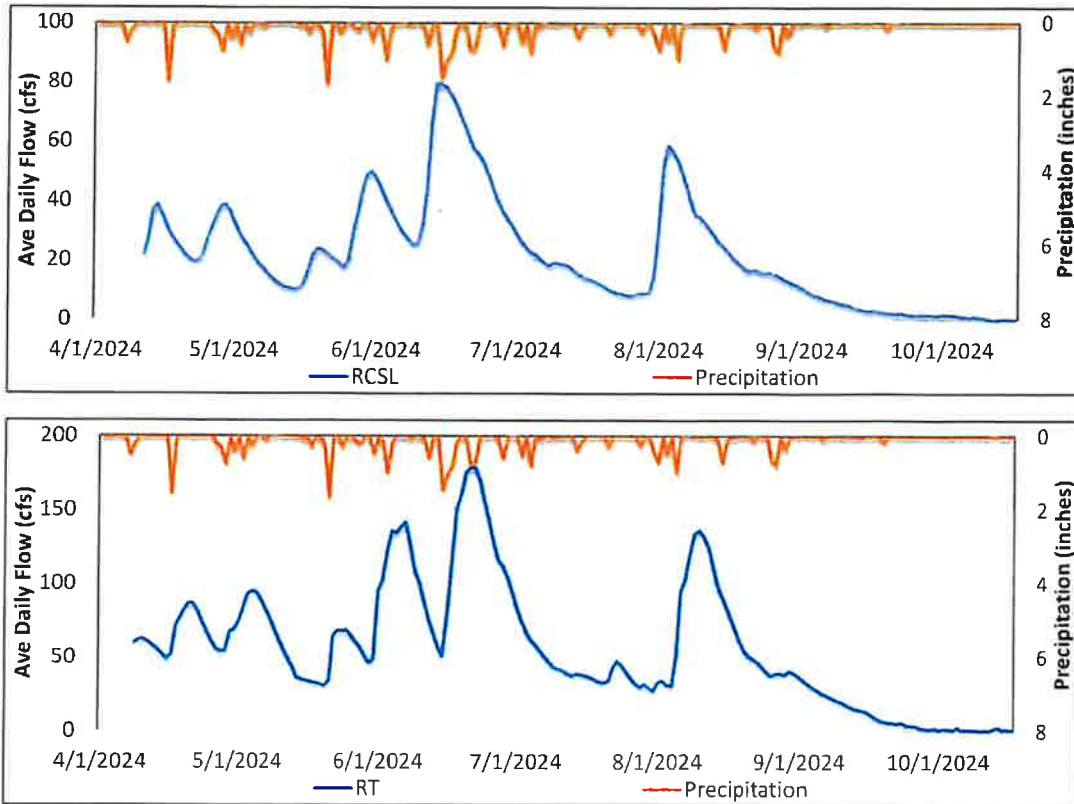
### 2024 Elm Creek Stream Monitoring



Figures 1-4. Annual hydrographs showing daily average flow and daily precipitation for sampling sites: DC, EC77, and RCL.



### 2024 Elm Creek Stream Monitoring



Figures 5 & 6. Annual hydrographs showing daily average flow and daily precipitation for sampling sites: RCSL and RT.



## CITIZEN-ASSISTED MONITORING PROGRAM (CAMP)

Engaging residents to address lake water quality issues



The Metropolitan Council's Citizen-Assisted Monitoring Program (CAMP) is a partnership to collect and analyze scientifically valid water-quality data from lakes in the seven-county Twin Cities area. Organizations and residents use the data to make better decisions about lake management.



[Citizen-Assisted Monitoring Program Brochure \(pdf\)](#)

Under CAMP, sponsor organizations recruit volunteers to track water quality in local lakes. Sponsor organizations include counties, cities, watershed districts and other local governments.

Each volunteer monitors a specific site on a lake on a regular basis from mid-April through mid-October (every two weeks is most common). Volunteers collect a surface water sample, measure water temperature and clarity, and report weather and lake conditions.

With help from their sponsors, volunteers provide the data and samples to Metropolitan Council Environmental Services (MCES). MCES analyzes the samples, reviews and analyzes data, assesses and reports on current lake conditions, and manages the CAMP program. CAMP is part of Met Council's [Lake Monitoring & Assessment Program](#).



Lake Monitoring History

Year	Cook	Cowley	Diamond	Dubay	Fish	French	Goose	Henry	Jubert	Laura	Medina	Mill Pond	Mud	Rice	Sylvan	Teal	Weaver
2025			T	RB	T	RO		RO	RO	RB				T			T
2024		RB	T		T	RO		RO	RO					T	RB		T
2023		T	T		T									T	T		T
2022			T		T		T					T	T	T			T
2021			T		T		T					T	T	T			T
2020			T		T									T		C	T
2019			T		T									T			T
2018			T		T				C					T			T
2017			T		T				C					T			T
2016		C	T		T				C					T			T
2015			T		T				C	C				T			T
2014			T	C	T					C		T		T	C		T
2013			T	C	T	T				C		T		T	C		T
2012			T	C	T	T					C	T	T		C		T
2011			T	C	T	T		C				T	T	C/T			T
2010		C	T		T	T		C				T		C/T			T
2009		C	T		T	T		C				T		C			T

C = CAMP; T = Three Rivers; RB = recommended from budget; RO = recommended from other source.  
 Shaded = Impaired Waters; Sentinel Lakes: Diamond, Fish, Rice, Weaver

## 2024 Stream Monitoring

### United States Geological Survey

There are three hydrologic watersheds within the administrative boundaries of the Elm Creek Watershed Management Commission – Elm Creek, Crow River and Mississippi River. The Elm Creek watershed contains several large depressions and drainageways. Stormwater within Elm Creek watershed is generally directed from the south and west to northeast via four main drainage ways – Rush Creek, North Fork Rush Creek, Diamond Creek, and Elm Creek. These drainage ways converge in the Elm Creek Park Reserve and enter Hayden Lake. Water is eventually discharged to the Mississippi River near the Mill Pond in Champlin.

Northwest areas of Rogers drain to Crow River. Within this area, Fox Creek is the main drainage way that collects stormwater along the I-94 corridor and the area between I-94, Territorial Road and Fletcher Lane. Areas north of I-94 and along the Highway 101 corridor drain north to the Crow River, mostly along the corridor. The northern quarter of Dayton flows north into the Mississippi River with a small area on the northwest side of Dayton draining to the Crow River. There are no major drainageways in these areas.

Elm Creek has been monitored since 1976 at a station located in Champlin. The monitoring station for Elm Creek is located at Elm Creek Road crossing in the Elm Creek Park Reserve and is operated in cooperation with the United States Geological Survey (USGS). The exact location is: latitude 45°09'48", longitude 93°26'11" referenced to North American Datum of 1927, in NE ¼ NW ¼ Sec.35, T.120 N., R.22 W., Hennepin County, MN, Hydrologic Unit 07010206, on left bank, 33 feet downstream from bridge on Elm Creek Road, 2.5 mi southwest of Champlin. Datum of the gage is 850.70 ft above sea level (NGVD of 1929). The Commission shares the costs of operating the station, which collects continuous flow data and periodic event and base water quality data. The watershed area above the gauging station is 86 square miles, or 81% of the hydrologic watershed.

Both grab samples and storm runoff samples are collected and analyzed for various parameters. Analyses of the streamflow and water quality monitoring data for Elm Creek and its tributaries are summarized below. Real time data from the monitoring station in Champlin may be viewed at [http://waterdata.usgs.gov/mn/nwis/uv/?site\\_no=05287890&PARAMeter\\_cd=00065,00060](http://waterdata.usgs.gov/mn/nwis/uv/?site_no=05287890&PARAMeter_cd=00065,00060).

### Flow Monitoring

Storm event samples are collected using an automatic sampler. Routine manual sampling occurs approximately monthly. The average mean discharge for the 2022 water year (October 1, 2022, through September 30, 2023) was 30.30. Water year 2021 (October 1, 2022, to September 30, 2023) was below average for the Elm Creek discharge as compared to the 2020 water year that was still somewhat historically high at 57.7 cfs for the mean average discharge.

As an extreme comparison, the 2019 water year was higher and discharged more water downstream of the station than any time during the 42 years the station has been in place. During the 2022 water year the minimum and maximum observed average daily discharge values were 1.10 cfs on October 1, 2022, and 53 cfs on April 22, 2023. The long-term average daily discharge at the station is 43.9 cfs or 6.93 inches (years 1979-2020).

Elm Creek Annual Instantaneous Peak Discharge Rates							
Date	Peak Flow (cfs)	Date	Peak Flow (cfs)	Date	Peak Flow (cfs)	Date	Peak Flow (cfs)
4/4/79	307	6/1/91	371	6/28/03	695	7/19/15	127
3/25/80	199	3/8/92	380	6/03/04	350	9/24/16	1,220**
6/15/81	44	6/22/93	315	10/30/04	118	5/23/17	482
4/3/82	471*	4/30/94	669*	10/09/05	295	4/25/18	405
3/9/83	408	3/17/95	237	3/17/07	223	3/24/19	836
2/25/84	341	3/19/96	407	5/4/08	205	4/2/20	229
3/18/85	579*	4/1/97	511*	3/27/09	119	3/14/21	177
3/27/86	812*	4/5/98	306	3/17/10	369	5/16/22	183
8/1/87	185	5/15/99	538*	3/24/11	803	4/22/23	553***
3/27/88	39	7/13/00	112	5/29/12	568	6/20/24	457
3/31/89	159	4/25/01	875	6/26/13	389		
8/1/90	225	5/11/02	554	5/1/14	803		

\*These values have been revised based on the 2001 rating curve.

\*\*All-time instantaneous peak discharge. The estimated 100-year flood discharge at this site is 2,290 cfs.

\*\*\* Provisional.



## Watershed Connections

### Fall 2024 Launch

In the fall of 2024 Hennepin County launched *Watershed Connections*, an experiential, hands-on environmental education experience for youth from 6-12 grades. Using River Watch as its foundation, *Watershed Connections* include revamped and updated curriculum to include a focus on all surface water bodies including streams, ponds, and wetlands. New introductory activities related to water and watersheds we created where groups can visit a water body, collect organisms and learn about what the biological community is telling us. *Watershed Connections* also brought new opportunities for all age groups including a Stewardship initiative that will launch in early 2025. We are prioritizing three stages of Engagement, Education and Empowerment for all youth who participate.

In 2024, *Watershed Connections* connected with 577 youth to learn more about the watersheds, water quality and stormwater impacts to ecosystems, and to explore the opportunity to be a biologist for a day. Youth visited streams across Hennepin County to experience the natural environment, collect aquatic macroinvertebrates, and practice basic identification techniques. Youth learned about biological monitoring, the value of macroinvertebrates and their habitats, and considered their roles in protecting the natural environment.

### WMWA and Watershed Connections

Within the WMWA focus areas three experienced schools returned in 2024 to monitor sites within ECWMC and BCWMC. 2 of the 3 schools had multiple groups collecting, preserving and identifying a full biological sample. One group on Bassett Creek was supported in the field with lessons by an experienced field biologist who assisted with collection, identification and data analysis.

Stream	School	No. Students	Season	Sample Date	Family Biotic Index
Elm Creek	Osseo HS	25	Spring	5/14/2024	6.4
Elm Creek	Wayzata HS	65	Spring	5/22/2024	7.25
Elm Creek	Osseo HS	26	Fall	10/8/23024	4.46
Elm Creek	Wayzata HS	90	Fall	10/24/2024	8.81

For more information contact:

Mary L Karius

[Mary.karius@hennepin.us](mailto:Mary.karius@hennepin.us)

612-596-9129

<https://www.hennepin.us/business/work-with-henn-co/watershed-connections>

