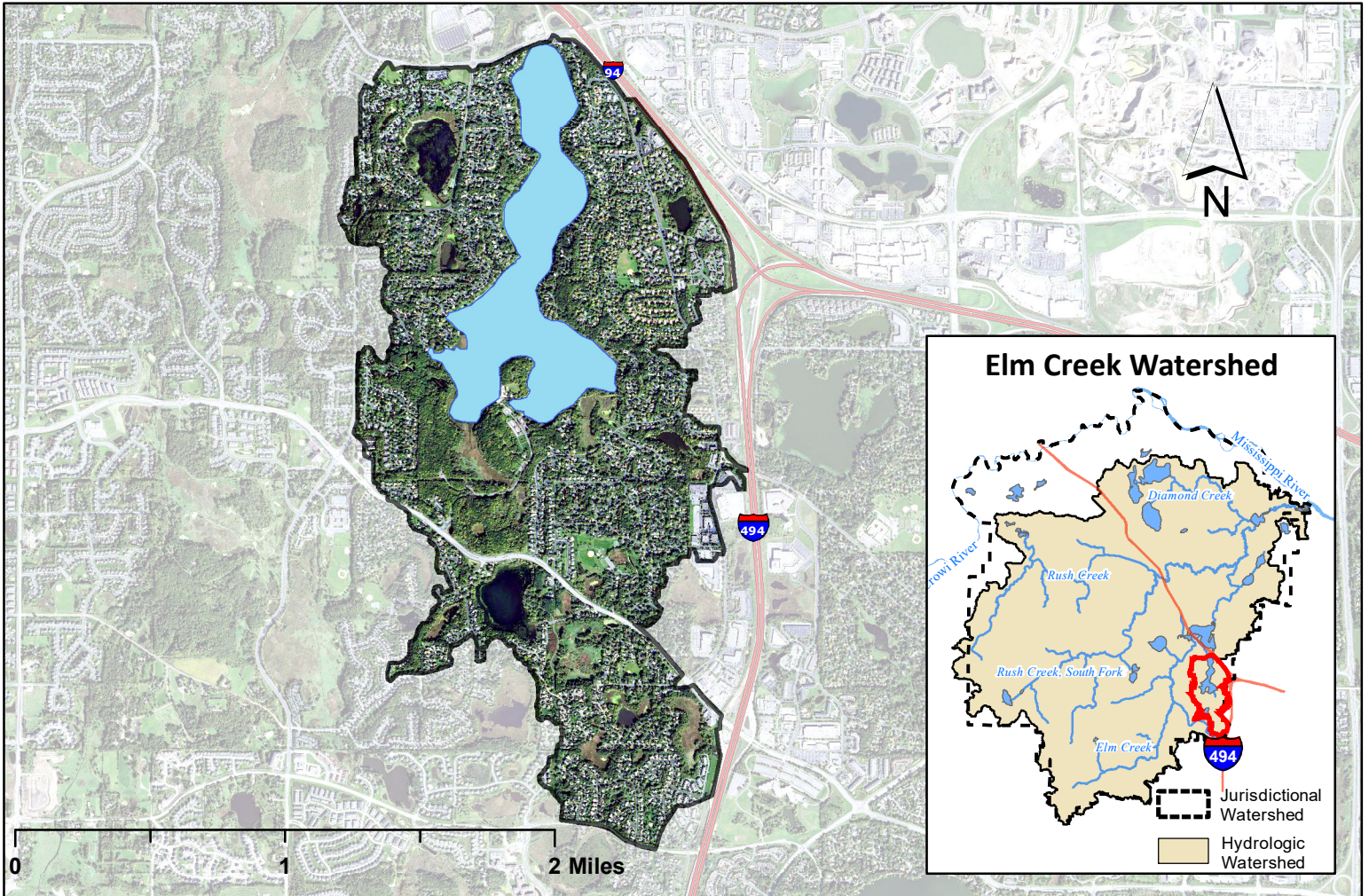
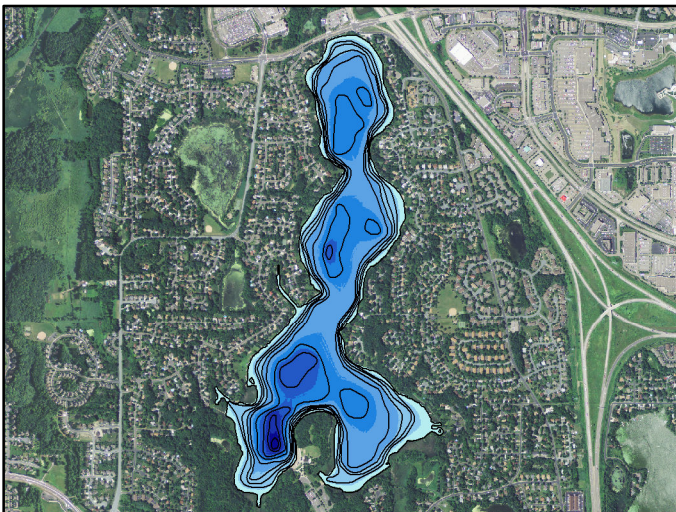


# Fish Lake Watershed Map

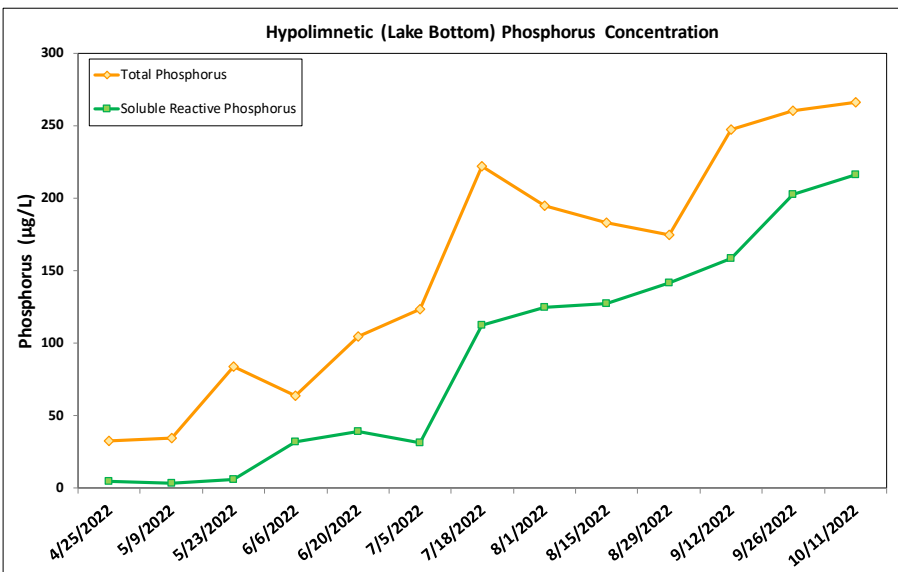
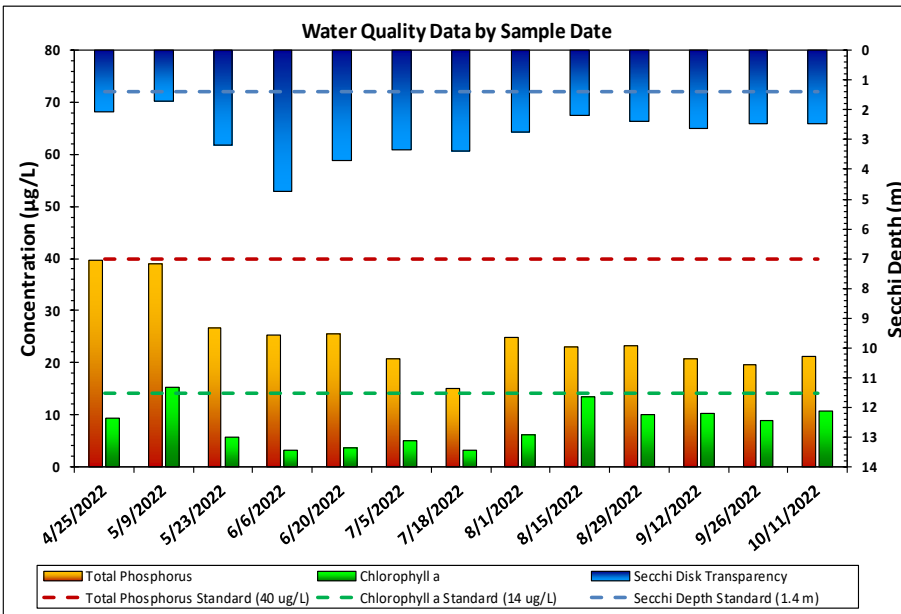
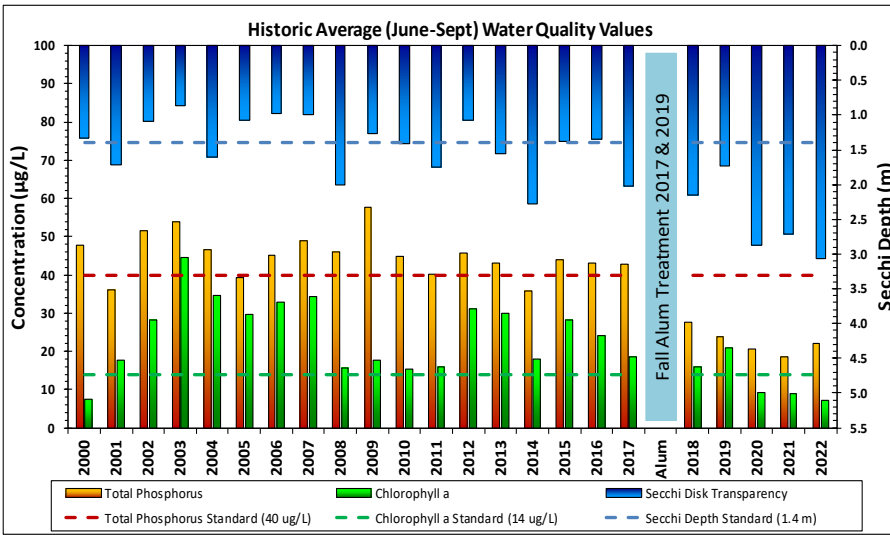


## Fish Lake Bathymetry



### Lake and Watershed Characteristics

DNR #	27011800
Watershed Area	1,611 Acres
Lake Area	232 Acres
Percent Littoral Area	32%
Average Depth	20.5 ft.
Maximum Depth	49 ft.
Watershed:Lake Ratio	6.9:1
Impairment	Excess Nutrients in 2008
	Approved Removal in 2024
Classification	Deep Lake



Fish Lake Water Quality Report Card				
Year	TP	Chl-a	Secchi	Avg Grade
1995			C	C
1996			B	B
1997	C	C	C	C
1998	C	B	C	C+
1999	C	B	C	C+
2000	C	A	C	B-
2001	C	B	C	C+
2002	C	C	D	C-
2003	C	C	D	C-
2004	C	C	C	C
2005	C	C	D	C-
2006	C	C	D	C-
2007	C	C	D	C-
2008	C	B	C	C+
2009	C	B	C	C+
2010	C	B	C	C+
2011	C	B	C	C+
2012	C	C	D	C-
2013	C	C	C	C
2014	C	B	B	B-
2015	C	C	C	C
2016	C	C	C	C
2017	C	B	C	C+
2018	B	B	C	B-
2019	B	C	C	C+
2020	A	A	B	A-
2021	A	A	B	A-
2022	A	A	A	A
<b>MPCA Standard</b>	C	B	C	C+

Met Council Grading System for Lake Water Quality



Division of Water Resources  
December 2022