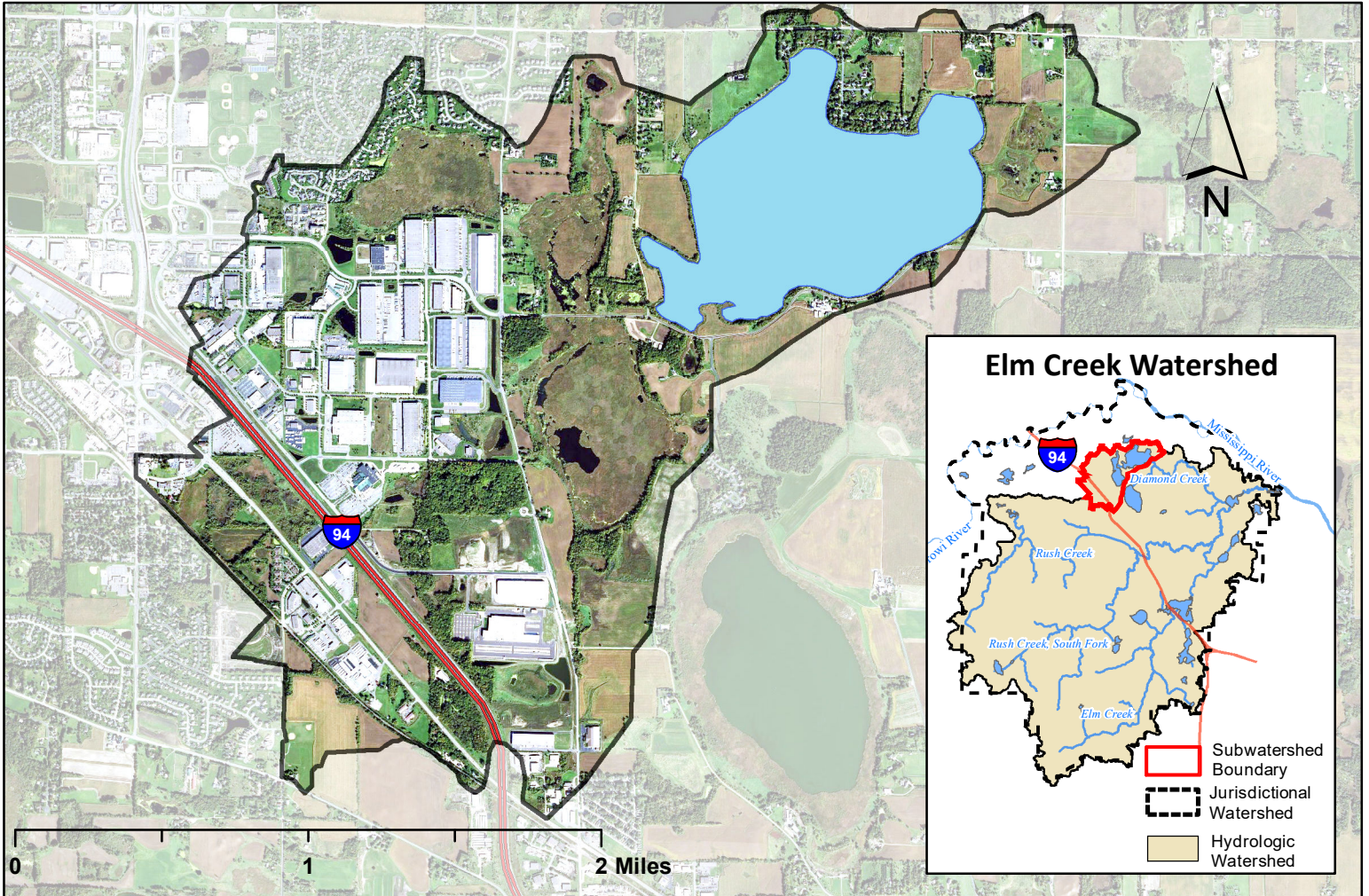
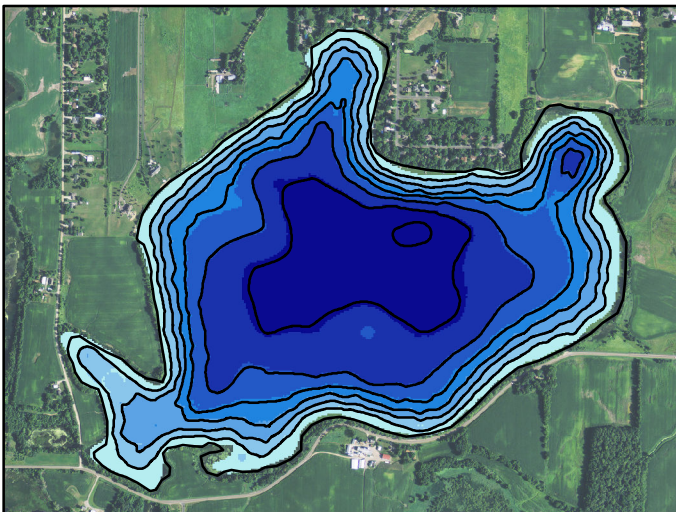


# Diamond Lake Watershed Map

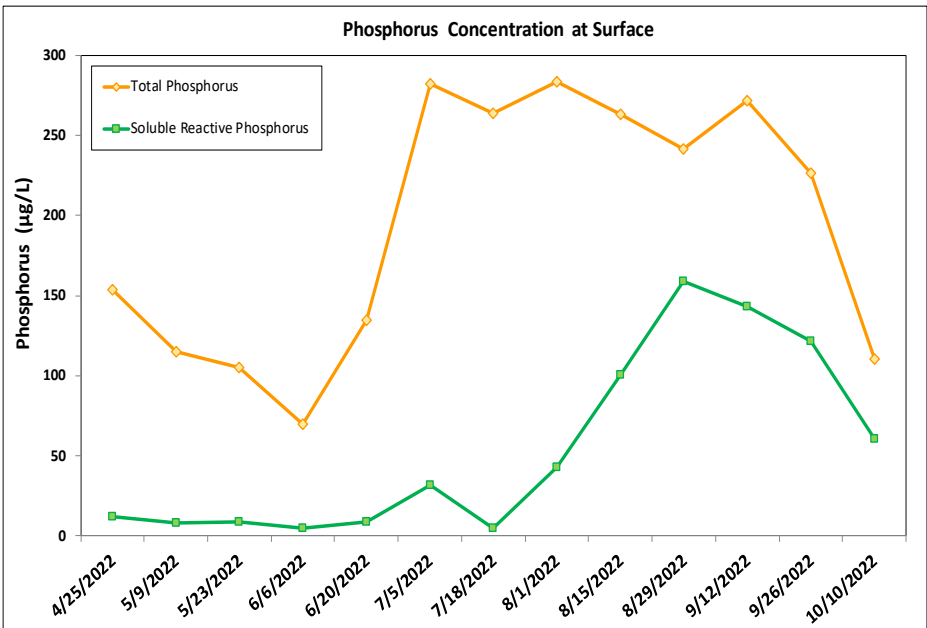
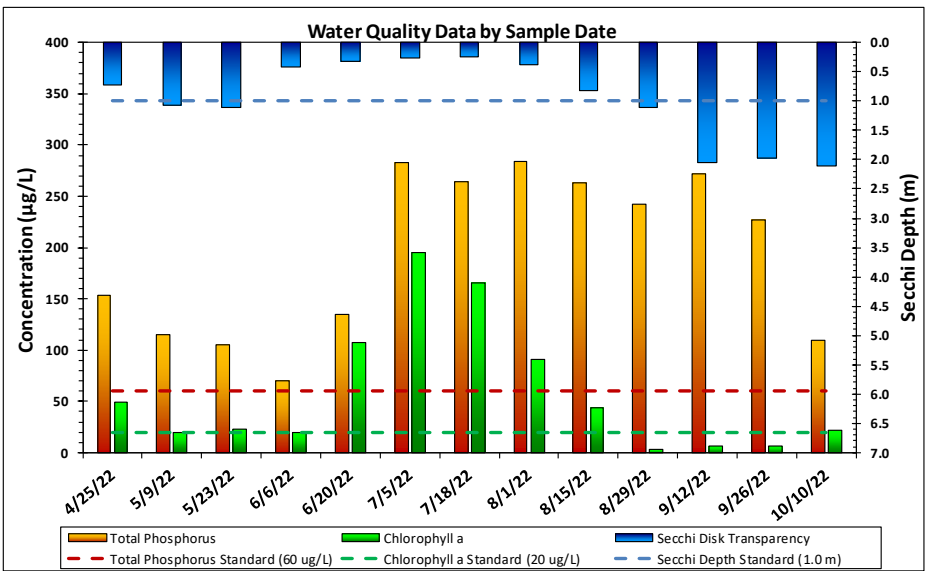
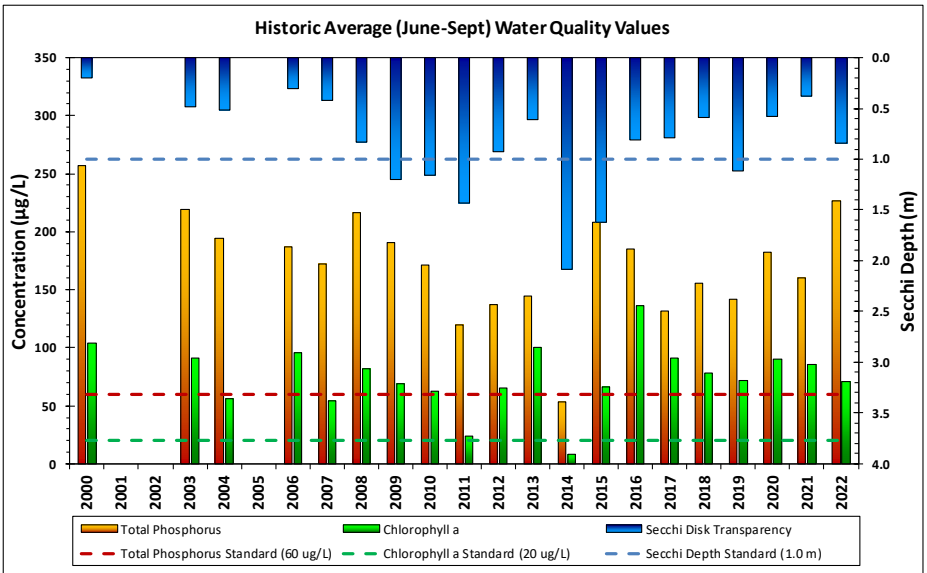


## Diamond Lake Bathymetry



### Lake and Watershed Characteristics

DNR #	27012500
Watershed Area	2,367 Acres
Lake Area	382 Acres
Percent Littoral Area	100%
Average Depth	3.97 ft.
Maximum Depth	7.37 ft.
Watershed:Lake Ratio	6.2:1
Impairment Classification	Excess Nutrients in 2006 Shallow Lake



Diamond Lake Water Quality Report Card				
Year	TP	Chl-a	Secchi	Avg Grade
1998	D	D	F	D-
1999				
2000	F	F	F	F
2001				
2002				
2003	F	F	F	F
2004	F	D	F	F
2005				
2006	F	F	F	F
2007	F	D	F	F
2008	F	F	D	F
2009	F	D	C	D
2010	F	D	D	D-
2011	D	C	C	C-
2012	D	D	D	D
2013	D	F	F	F
2014	C	A	C	B-
2015	F	D	C	D
2016	F	F	D	F
2017	D	F	D	D-
2018	F	F	F	F
2019	D	D	D	D
2020	F	F	F	F
2021	F	F	F	F
2022	F	D	D	D-
<b>MPCA Standard</b>	C	C	D	C-

Met Council Grading System for Lake Water Quality