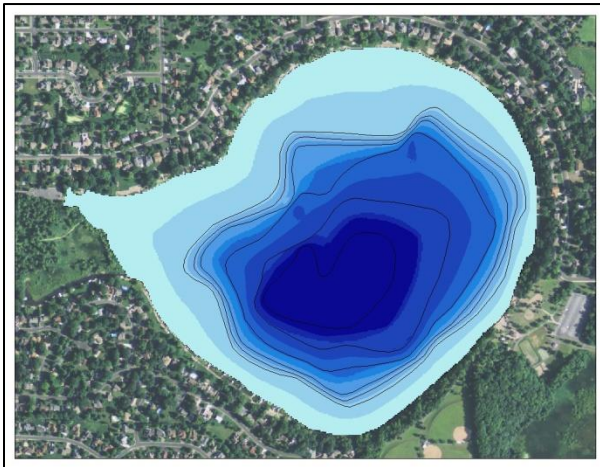
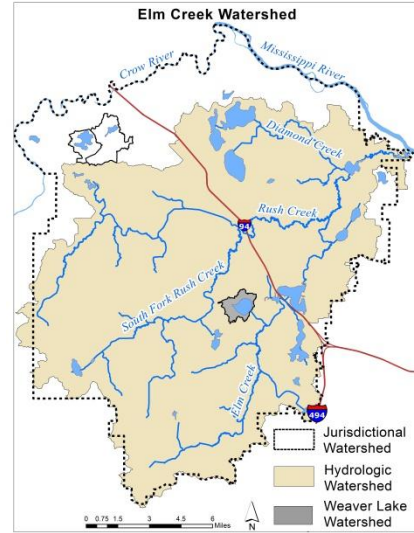
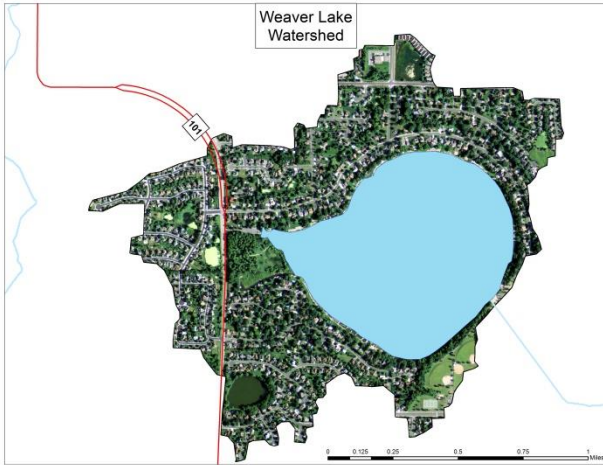
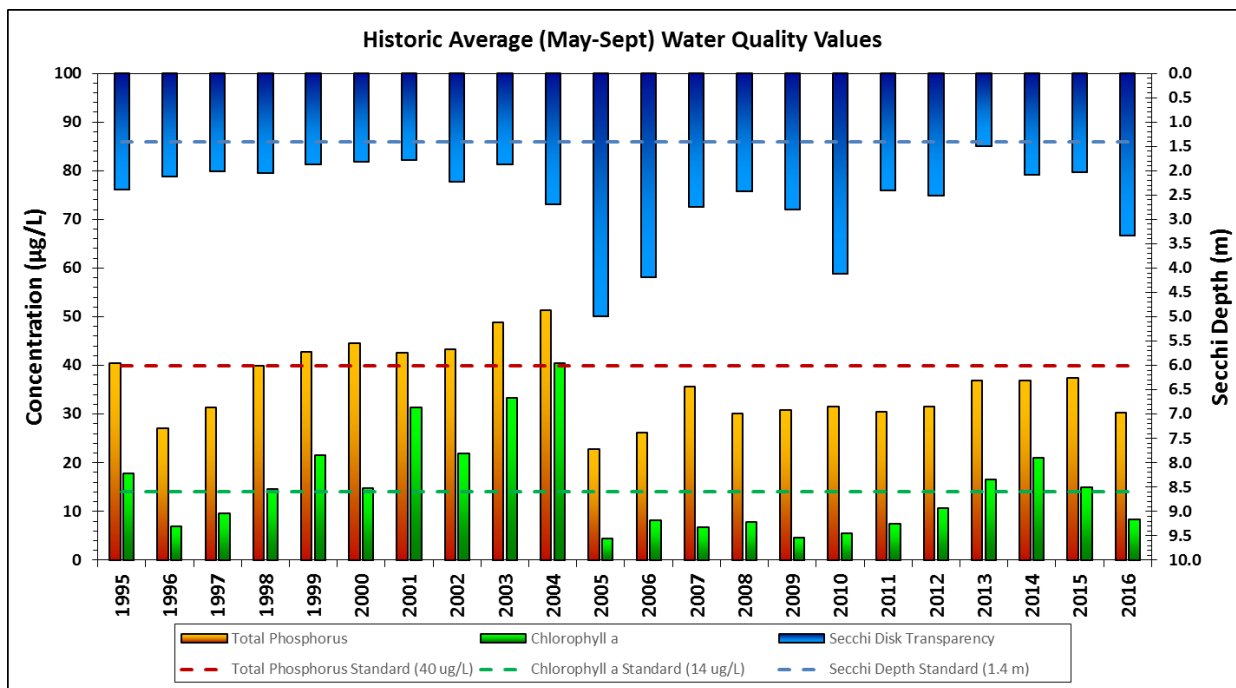


Weaver Lake



Lake and Watershed Characteristics	
DNR #	27011700
Watershed Area	187 Acres
Lake Area	149.5 Acres
% Littoral Area	47%
Average Depth	21.1 ft
Maximum Depth	52.0 ft
Watershed/Lake Area Ratio	1.3 to 1
Hydraulic Residence Time	13 Years
Impairment	None
Classification	Deep Lake



Weaver Lake Water Quality Report Card				
Year	TP	Chl-a	Secchi	Avg Grade
1995	C	B	B	B-
1996	B	A	C	B
1997	B	A	C	B
1998	C	B	C	C+
1999	C	C	C	C
2000	C	B	C	C+
2001	C	C	C	C
2002	C	C	B	C+
2003	C	C	C	C
2004	C	C	B	C+
2005	A	A	A	A
2006	B	A	A	A-
2007	C	A	B	B
2008	B	A	B	B+
2009	B	A	B	B+
2010	B	A	A	A-
2011	B	A	B	B+
2012	B	B	B	B
2013	C	B	C	C+
2014	C	C	C	C
2015	C	B	C	C+
2016	B	A	A	A-
MPCA Standard	C	B	C	C+

Metropolitan Council Grading System (Osgood 1989)

