

elm creek Watershed Management Commission

ADMINISTRATIVE OFFICE
3235 Fernbrook Lane
Plymouth, MN 55447
PH: 763.553.1144
FAX: 763.553.9326
email: judie@jass.biz
www.elmcreekwatershed.org

TECHNICAL OFFICE
Hennepin County
Dept. of Environment & Energy
701 Fourth Ave S Suite 700
Minneapolis, MN 55415-1600
PH: 612.596.1171 • FAX: 612.348.8532
email: James.Kujawa@co.hennepin.mn.us

May 1, 2019

Representatives
Elm Creek Watershed Management Commission
Hennepin County, MN

*The meeting packet for this meeting may be found on
the Commission's website:*
[http://www.elmcreekwatershed.org/minutes--
meeting-packets.html](http://www.elmcreekwatershed.org/minutes--meeting-packets.html)

Dear Representatives:

A regular meeting of the Elm Creek Watershed Management Commission will be held on **Wednesday, May 8, 2019, at 11:30 a.m.** in the Mayor's Conference Room at Maple Grove City Hall, 12800 Arbor Lakes Parkway, Maple Grove, MN.

The Commission will suspend its regular meeting at 11:30 a.m. for the purpose of conducting a public meeting on a proposed Minor Plan Amendment to adopt revisions to its Capital Improvement Program. The regular meeting will resume immediately after the public meeting concludes.

Please email me at judie@jass.biz to confirm whether you or your Alternate will be attending the regular meeting.

Thank you.

Regards,



Judie A. Anderson
Administrator
JAA:tim
Encls: Meeting Packet

cc: Alternates
Joel Jamnik
TRPD

HCEE
Diane Spector
Clerks

BWSR
Met Council
Official Newspaper

MPCA
DNR

Z:\Elm Creek\Meetings\Meetings 2019\05 Notice_reg meeting_public meeting.doc

elm creek

Watershed Management Commission

ADMINISTRATIVE OFFICE
 3235 Fernbrook Lane
 Plymouth, MN 55447
 PH: 763.553.1144
 FAX: 763.553.9326
 Email: judie@jass.biz
www.elmcreekwatershed.org

TECHNICAL OFFICE
 Hennepin County
 Dept. of Environment and Energy
 701 Fourth Ave S Suite 700
 Minneapolis, MN 55415-1600
 PH: 612.348.7338
 FAX: 612.348.8532
 Email: James.Kujawa@co.hennepin.mn.us

AGENDA May 8, 2019

1. Call Regular Meeting to Order.
 - a. Approve Agenda.*
2. Consent Agenda.
 - a. Minutes last Meeting.*
 - b. Treasurer's Report and Claims.*
- Suspend regular meeting*
3. Public Meeting for Minor Plan Amendment to Third Generation Plan.
 - a. Staff Report.*
 - 1) Revised CIP.*
 - 2) Exhibit A's.*
 - b. Commissioner Discussion.
 - c. Open Public Meeting.
 - 1) Receive written comments.
 - 2) Receive comments from public.
 - d. Close Public Meeting.
 - e. Commission Discussion.
 - f. Consider Resolution 2019-02.*
- Resume regular meeting.*
4. Open Forum.
5. Action Items.
 - a. Project Reviews – see Status Report.*
 - 11.p. 2019-007 Westin Ridge, Plymouth.*
 - 11.r. 2019-009 Beacon ridge, Plymouth.*
 - 11.s. 2019-010 Hindu Temple Solar Array, Maple Grove.*
 - b. 2020 Operating Budget.*
 - 1) Member Assessments.*
 - 2) Barr Letter of Interest.*
 - c. 2018 Financial Audit.*
 - d. 2019 CAMP Monitoring. *We have budgeted to monitor one lake this year.*
6. Old Business.
 - a. Commission Procedures – Guenthner.
7. New Business.
8. Communications.
 - a. Corcoran 2018 Stormwater Annual Report.*
9. Education.
 - a. WMWA Update.**
10. Grant Opportunities and Updates.

*in meeting packet
 **available on website

The meeting packet may be found on the Commission's website: <http://elmcreekwatershed.org/minutes--meeting-packets.html>

11. Project Reviews. (See Staff Report.*)

a.					2014-015	Rogers Drive Extension, Rogers.
b.					2015-004	Kinghorn Outlet A, Rogers.
c.					2016-040	Kinghorn 4 th Addition, Rogers.
d.					2016-047	Hy-Vee North, Maple Grove.
e.					2017-039	Rush Creek Apartments, Maple Grove.
f.					2017-050W	Ernie Mayer Wetland/floodplain violation, Corcoran.
g.					2018-005	Sundance Greens, Dayton.
h.					2018-014	Refuge at Rush Creek, Corcoran.
i.					2018-020	North 101 Storage, Rogers.
j.					2018-021	113th Lane Extension/Brockton/101, Rogers.
k.					2018-038	Vincent Woods of Roger.
l.					2018-046	Graco, Rogers
m.					2019-001	Fernbrook View Apartments, Maple Grove.
n.					2019-003	Rogers High School Tennis Court, Rogers.
o.					2019-005	UBOL I-94 MnDot project., Maple Grove, Rogers.
p.	A	E			2019-007	Westin Ridge, Plymouth.
q.					2019-008	Residences on Elm Creek, Medina.
r.	A	E			2019-009	Beacon Ridge, Plymouth.
s.	A	E			2019-010	Hindu Temple Solar Array, Maple Grove.
t.					2019-011	Ravinia 11 th Addition, Corcoran.
u.					2019-012	Brockton Lane Reconstruction Project, Plymouth.
v.					2019-013	Boston Scientific Parking Expansion, Maple Grove.
w.						
x.						
y.						
z.						
ah.				AR	2013-046	Woods of Medina, Medina.
ai.				AR	2015-030	Kiddiegarten Child Care Center, Maple Grove.
aj.				AR	2016-002	The Markets at Rush Creek, Maple Grove.
ak.				AR	2016-005W	Ravinia Wetland Bank Plan, Corcoran.
al.				AR	2017-014	Laurel Creek, Rogers.
am.				AR	2017-017	Mary Queen of Peace Catholic Church, Rogers.
an.				AR	2017-029	Brayburn Trails, Dayton.
ao.				AR	2018-018	Summers Edge Phase II, Plymouth.
ap.				AR	2018-026	Windrose, Maple Grove.
aq.				AR	2018-028	Tricare Third Addition, Maple Grove.
ar.				AR	2018-044	OSI Phase II, Medina.
as.				AR	2018-048	Faithbrook Church Phase 2, Dayton.
at.				AR	2019-002	Parkside Villas, Champlin.
au.						
av.						

= Action item E = Enclosure provided I = Informational update will be provided at meeting RPI - removed pending further information
R = Will be removed RP= Information will be provided in revised meeting packet..... D = Project is denied AR awaiting recordation

12. Other Business.

Z:\Elm Creek\Meetings\Meetings 2019\05 Regular and Public meeting agenda.docx

*in meeting packet
**available on website

CHAMPLIN - CORCORAN - DAYTON - MAPLE GROVE - MEDINA - PLYMOUTH - ROGERS

elm creek Watershed Management Commission

ADMINISTRATIVE OFFICE
3235 Fernbrook Lane
Plymouth, MN 55447
PH: 763.553.1144 • FAX: 763.553.9326
Email: judie@jass.biz
www.elmcreekwatershed.org

TECHNICAL OFFICE
Hennepin County
Dept. of Environment and Energy
701 Fourth Ave S Suite 700
Minneapolis, MN 55415-1600
PH: 612.348-7338 • FAX: 612.348.8532
Email: James.Kujawa@hennepin.us

Technical Advisory Committee *(beginning on page 1)* and Regular Meeting *(beginning on page 3)* Minutes - April 10, 2019

I. A meeting of the **Technical Advisory Committee (TAC)** for the Elm Creek Watershed Management Commission was convened at 10:00 a.m., Wednesday, April 10, 2019 in the Mayor's Conference Room, Maple Grove City Hall, 12800 Arbor Lakes Parkway, Maple Grove, MN.

In attendance were: Todd Tuominen, Champlin; Kevin Mattson, Corcoran; Kent Torve, Wenck Associates, Corcoran; Mark Lahtinen, Maple Grove; Shane Nelson, Hakanson-Anderson, Medina; Ben Scharenbroich, Plymouth; Andrew Simmons, Rogers; James Kujawa, Jason Swenson, and Kirsten Barta, Hennepin County Dept. of Environment and Energy (HCEE); Brian Vlach, Three Rivers Park District (TRPD); Jeff Weiss, Barr Engineering; and Judie Anderson, JASS.

Also present: Ken Guenther, Corcoran; Doug Baines, Dayton; Liz Weir, Medina; Catherine Cesnik, Plymouth; and Bruce LaMott, Diamond Lake Association and Patrick Selter, PLM Lake & Land, for item IV.

II. Motion by Simmons, second by Scharenbroich to **approve the agenda.*** *Motion carried unanimously.*

Motion by Scharenbroich, second by Simmons to **approve the minutes*** of the February 13, 2019 TAC meeting. *Motion carried unanimously.*

III. 2019 Capital Improvement Projects.

A. The following projects appear on the Capital Improvement Program spreadsheet for 2019.

Line 12	no projects identified	\$50,000
Line 15	no projects identified	\$125,000
Line 16	Rush Creek Main Stem Restoration, Maple Grove*	\$25,000
Line 23	Ranchview Wetland Restoration, Maple Grove*	\$250,000
Line 30	Mill Pond Rain Gardens, Champlin*	\$100,000
Line 34	SPECIFIC PROJECT IDENTIFIED Rush Ck SWA Cost-Share/Ag BMPs*	\$20,000
Line 37	COST ADJUSTED Hickory Dr Stormwater Improvement, Medina*	\$76,823
Line 39	Downtown Regional Stormwater Pond, Corcoran*	\$10,000
Line 42	Elm Creek Stream Restoration Phase IV, Champlin*	\$150,000
Line 43	Lowell Pond Raingarden, Champlin*	\$100,000
Line 47	Mill Pond Easement, Champlin	removed
		\$731,823

B. The Commission's Cost Share Policy states the following:

The Commission has elected to fund capital projects through an ad valorem tax levy. Under the authority provided by MN Stat 103B.251, Subd. 5, the Commission has the authority to certify for payment by the county all or part of the cost of an approved capital improvement. The Commission will pay up to 25

elm creek Watershed Management Commission

TAC and Regular Meeting Minutes – April 10, 2019

Page 2

percent of the cost of qualifying projects. This amount will be shared by all taxpayers in the watershed, with the balance of the project cost being shared by the local government(s) participating in or benefiting from the improvement.

The Commission's maximum annual share of an approved project is up to \$250,000. The Commission's share will be funded through the ad valorem tax levy – spread across all taxpayers within the watershed. The Commission will use a maximum annual levy of \$500,000 as a working guideline.

C. Following discussion by the members, the following projects were moved forward:

Line 16	Rush Creek Main Stem Restoration, Maple Grove*	\$25,000
Line 23	Ranchview Wetland Restoration, Maple Grove*	\$125,000
	<i>with the balance moved to 2020</i>	
Line 30	Mill Pond Rain Gardens, Champlin*	moved to 2020
Line 34	Rush Creek SWA Cost-Share/Ag BMPs*	\$20,000
Line 37	Hickory Drive Stormwater Improvement, Medina*	\$76,823
Line 39	Downtown Regional Stormwater Pond, Corcoran*	\$26,500
Line 42	Elm Creek Stream Restoration Phase IV, Champlin*	\$150,000
Line 43	Lowell Pond Raingarden, Champlin*	<u>moved to 2020.</u>
		\$423,323

Motion by Tuominen, second by Scharenbroich to recommend the projects listed in III.C. above to the Commission for funding at the amounts shown. *Motion carried unanimously.*

IV. Diamond Lake Curly Leaf Pondweed Treatment.* LaMott and Selter were present to provide the Commissioners with information regarding the Diamond Lake Improvement Association's proposed Fluridone treatment for control of curly leaf pondweed (CLPW) in the lake. Their presentation described the project in some detail, including funding estimates for three years (2019-2021) of treatment. The Diamond Lake Association requested funding assistance for the project. PLM Lake & Land Management Corp. would be the contractor performing the treatments, and Three Rivers Park District would be contracted to conduct the pre and post treatment vegetation surveys.

Discussion followed the presentation. Vlach indicated that the project is necessary to eventually meet the in-lake water quality goals, but the timing of the project is not necessarily ideal. The Diamond Lake TMDL indicated that watershed loading accounts for 75% of the total load, and internal load accounts for 23% of the total load. There has to be a 3400 lb. reduction in total load for the lake to meet the total phosphorus state standard. The control of curly leaf pondweed would only account for 18% to 36% of the total reduction in load that is needed to achieve in-lake phosphorus goals. Consequently, controlling curly leaf pondweed would not achieve the in-lake water quality goal by itself because the majority of the load reduction needs to come from the watershed. A sub-watershed assessment has been approved by the Commission to identify projects in the watershed to achieve the proposed watershed load reductions identified in the TMDL. The Technical Advisory Committee (TAC) would like to address the watershed issues first before investing in the curly leaf pondweed control project. The risk of doing the project now is that the lake may remain in the algal-dominated condition due to the significant amount of watershed load going to the lake. Clear water conditions are necessary for the lake to transition from the algal dominated to the plant dominated condition. It will be difficult to achieve clear water conditions without addressing the watershed loading. Vlach indicated that there is support for the project, but not until the watershed issues are addressed first.

elm creek Watershed Management Commission

TAC and Regular Meeting Minutes – April 10, 2019

Page 3

Barta expressed willingness to work with a shoreline agricultural resident to incorporate BMPs on his land. She also indicated decreasing erosion from the road on the south side of the lake will have a beneficial effect in reducing external loading. It was also stressed that education must be a part of this project.

It was a consensus of the members that, while the TAC supports the proposed project, more information is needed and will likely be provided when the Diamond Lake Subwatershed Assessment is completed. Timing of the project is critical and, in order for the project to be sustainable, the external load in the lakeshed must be addressed prior to the treatment.

V. The date of the next TAC meeting is indeterminate. The meeting of the Technical Advisory Committee was adjourned at 11:32 a.m.

I. A regular meeting of the Elm Creek Watershed Management Commission was called to order at 11:42 a.m., Wednesday, April 10, 2019, in the Mayor's Conference Room, Maple Grove City Hall, 12800 Arbor Lakes Parkway, Maple Grove, MN, by Chairman Doug Baines Present were: Bill Walraven, Champlin; Ken Guenther, Corcoran; Doug Baines, Dayton; Joe Trainor, Maple Grove; Elizabeth Weir, Medina; Fred Moore, Plymouth; Kevin Jullie, Rogers; James Kujawa, Jason Swenson, and Kirsten Barta, Hennepin County Dept. of Environment and Energy (HCEE); Brian Vlach, Three Rivers Park District (TRPD); Jeff Weiss, Barr Engineering; and Judie Anderson, JASS.

Also present: Todd Tuominen, Champlin; Kevin Mattson and Jon Bottema, Corcoran; Mark Lahtinen, Maple Grove; Catherine Cesnik and Ben Scharenbroich, Plymouth; and Andrew Simmons, Rogers.

A. Motion by Weir, second by Walraven to approve the **revised agenda**.* *Motion carried unanimously.* Per Guenther's request, the Corcoran 2018 Stormwater Annual Report attached to the Downtown Regional Stormwater Pond description in the TAC meeting packet will be included on the May meeting agenda.

B. Motion by Walraven, second by Weir to approve the **minutes*** of the March 9, 2019, regular meeting. *Motion carried unanimously.*

C. Motion by Moore, second by Walraven to approve the April **Treasurer's Report and Claims*** totaling \$13,187.79. *Motion carried unanimously.*

II. Open Forum.

III. Action Items.

A. **Project Review 2018-005 Sundance Greens, Dayton**.* This site consists of seven parcels totaling 310 acres. Approximately half is the Sundance Golf Course, the other half is agricultural land. The applicant is proposing a long-term, phased residential development with 665 residential units while maintaining a portion (9 of the 18 holes) of the golf course. Total new impervious area will be 71 acres. This project is being reviewed for Commission Rules D, F, and I. As part of the submittal for this project, the Sundance West and Sundance 2nd Addition phases will be reviewed for Rule E. As the site is phased in, the Commission will review each addition for consistency with Rules D, E, F and I. In their findings dated April 10, 2019, Staff recommends approval of the (1) stormwater management and floodplain plans for the Sundance Greens Preliminary Plans; and (2) grading and erosion control plans for Sundance Greens West and Sundance Greens 2nd Addition. Staff has determined the Wetland Buffer on Green 7 adjacent to wetland 3 does not meet the Commission's standard of 10' minimum. They

elm creek Watershed Management Commission

TAC and Regular Meeting Minutes – April 10, 2019

Page 4

recommend that the additional buffers proposed adjacent to wetlands 3 and 5 be considered adequate alternative protection method for wetland 3, increasing the average buffer width around Wetlands 3 and 5 to 34 feet. Motion by Weir, second by Walraven to approve Staff's recommendations. *Motion carried, Guenthner voting nay.*

B. Project Review 2019-008 Residences on Elm Creek, Medina.* The Commission received a request from the landowner and the City of Medina to review a proposed driveway access on Hamel Road, adjacent to Elm Creek. The driveway work will disturb approximately 2,650 SF. With the proximity to Elm Creek, impacts to the floodplain/floodway were a concern to Staff. Because of the limited extent and nature of work (driveway access only), Commission staff will only review the floodplain issues at this time. Future development on this parcel will require further review by the Commission, depending on the degree of development. Based upon revised plans dated March 27, 2019, Staff, in their findings dated March 29, 2019, recommend approval of floodplain impacts. They further recommend that the City of Medina implement the erosion controls and culvert recommendations in their findings. Motion by Guenthner, second by Weir to approve Staff's recommendations. *Motion carried unanimously.*

C. 2018 Annual Activity Report.* Motion by Weir, second by Walraven to accept the 2018 report with the inclusion of a notation regarding an error found in the River Watch appendix. *Motion carried unanimously.* The report will be transmitted to BWSR by April 30, 2019. [Upon further reading, the text referred to a site on Rush Creek monitored by Minnetonka High School students, not that MHS was located on Rush Creek.]

IV. Recommendations from the Technical Advisory Committee (TAC).

A. Motion by Weir, second by Walraven to approve the recommendation of the Technical Advisory Committee (item III.C. of the TAC minutes above) to move forward with a request to Hennepin County for an **ad valorem levy** with six projects with a total Commission cost-share of \$423,323, and to further call for a **public meeting** to be held at the Commission's May 8, 2019 meeting to consider a **Minor Plan Amendment** to incorporate the revisions to the CIP. *Motion carried unanimously.*

B. The TAC recommended no action at this time regarding the **Diamond Lake Improvement Association's** request for funding assistance for the proposed Curly Leaf Pondweed Treatment. The Commissioners concurred with this recommendation.

V. Fish Lake Phase II Alum Treatment. Enclosed in the meeting packet are the following:

A. Amended Cooperative Agreement between Three Rivers Park District (TRPD), the City of Maple Grove, and the Commission. Motion by Guenthner, second by Weir to approve the agreement as amended pending approval by the City of Maple Grove. *Motion carried unanimously.* The amendment sets forth the revised cost-share contributions of the parties due to the increase in the cost of the second alum treatment.

B. Contract for Alum Treatment II between TRPD, the Commission, and HAB Aquatic Solutions, the contractor that will perform the treatment. The contract is in the amount of \$199,092, an amount to be modified due to increased or decreased quantities of unit price. Motion by Moore, second by Weir to approve the contract. *Motion carried unanimously*

C. Performance Bond naming HAB Aquatic Solutions as the Contractor and Three Rivers Park District as the Owner.

VI. Old Business.

VII. New Business.

Guenthner spoke to the Commissioners regarding the various **policies and procedures** utilized by the

elm creek Watershed Management Commission

TAC and Regular Meeting Minutes – April 10, 2019

Page 5

Commission. He indicated that, as a new Commissioner, he is trying to get “up-to-speed” on how the Commission operates - how and why it does certain things. He said he will be meeting with Staff to learn more about how the Commission does business. Anderson suggested that it may be time to update and distribute new Commissioner handbooks. With the continuity of the current Commission, this has not been done in a while.

VIII. Education and Public Outreach.

The **next West Metro Water Alliance (WMWA) meeting** is scheduled for 8:30 a.m., Tuesday, May 14, 2019, at Plymouth City Hall.

IX. Communications.**X. Other Business.****A.** The following **projects** are discussed in the April Staff Report.* ("W" denotes wetland project.)

1. 2013-046 Woods of Medina, Medina.
2. 2014-015 Rogers Drive Extension, Rogers.
3. 2015-004 Kinghorn Outlet A, Rogers.
4. 2015-030 Kiddiegarten Child Care Center, Maple Grove.
5. 2016-002 The Markets at Rush Creek, Maple Grove.
6. 2016-005W Ravinia Wetland Bank, Corcoran.
7. 2016-047 Hy-Vee Maple Grove #1, Maple Grove.
8. 2017-014 Laurel Creek, Rogers.
9. 2017-017 Mary Queen of Peace Catholic Church, Rogers
10. 2017-021 Hindu Society of MN Staff Housing, Maple Grove.
11. 2017-029 Brayburn Trails, Dayton.
12. 2017-039 Rush Creek Apartments, Maple Grove.
13. 2017-050W Ernie Mayer Wetland/floodplain violation, Corcoran.
14. 2018-001 Rush Creek Commons, Maple Grove.
15. 2018-005 Sundance Greens, Dayton.
16. 2018-014 Refuge at Rush Creek, Corcoran.
17. 2018-018 Summers Edge Phase III, Plymouth.
18. 2018-020 North 101 Storage, Rogers.
19. 2018-021 113th Lane Extension, Brockton Lane/CSAH101 Intersection, Rogers.
20. 2018-026 Windrose, Maple Grove.
21. 2018-028 Tricare Third Addition, Maple Grove.
22. 2018-038 Vincent Woods, Rogers.
23. 2018-043 Bee Hive Homes, Maple Grove.
24. 2018-044 OSI Phase II, Medina.
25. 2018-046 Graco Expansion, Rogers.
26. 2018-048 Faithbrook Church, Phase 2, Dayton.
27. 2018-052 Rogers Tennis Center, Rogers.
28. 2018-053 Elm Creek Restoration, Champlin.
29. 2019-001 Fernbrook View Apartments, Maple Grove.
30. 2019-002 Parkside Villas, Champlin.
31. 2019-003 Rogers High School Tennis Court, Rogers.

RULE D - STORMWATER MANAGEMENT

RULE E - EROSION AND SEDIMENT CONTROL

RULE F - FLOODPLAIN ALTERATION

RULE G - WETLAND ALTERATION

RULE H - BRIDGE AND CULVERT CROSSINGS

RULE I - BUFFERS

CHAMPLIN - CORCORAN - DAYTON - MAPLE GROVE - MEDINA - PLYMOUTH - ROGERS

elm creek Watershed Management Commission

TAC and Regular Meeting Minutes – April 10, 2019

Page 6

- 32. 2019-005 UBOL I-94 MnDot project., Maple Grove, Rogers
- 33. 2019-006 Hickory Pond, Medina.
- 34. 2019-007 Westin Ridge, Plymouth.
- 35. 2019-008 Residences on Elm Creek, Medina.
- 36. 2019-009 Beacon Ridge, Plymouth.
- 37. 2019-010 Hindu Temple Solar Array, Maple Grove.

B. Adjournment. There being no further business, the meeting was adjourned at 1:13 p.m.

Respectfully submitted,



Judie A. Anderson
Recording Secretary

JAA:tim

Z:\Elm Creek\Meetings\Meetings 2019\04 Regular and TAC meeting minutes.docx

Elm Creek Watershed Management Commission 2019 Treasurer's Report

		2019 Budget	April 2019	May 2019	2019 Budget YTD
EXPENSES					
Administrative		90,000	8,849.73	8,483.51	34,819.20
Watershed-wide TMDL Admin		1,500			0.00
Grant Writing		4,000			0.00
Website		5,000	105.00	60.00	304.80
Legal		2,000	93.00		139.50
Audit		5,000			0.00
Insurance		3,900			2,865.00
Miscellaneous/Contingency		1,000			0.00
Project Reviews	HCEE	97,400		23,273.68	23,273.68
Project Reviews	Consult	15,000	2,373.50	490.50	5,271.00
Project Reviews	Admin	15,000	804.19	552.74	2,811.52
WCA-Technical	HCEE	18,200		1,715.66	1,715.66
WCA	Legal	500			31.00
WCA	Admin	2,000	63.67	57.97	953.13
Floodplain Mapping	Technical	46,386		16,046.98	16,046.98
Stream Monitoring USGS		41,000		5,210.00	10,420.00
Stream Monitoring TRPD		6,875			0.00
DO Longitudinal Survey		-			0.00
TMDL Follow-up - TRPD		2,500			0.00
Rain Gauge		250	16.26	15.75	64.27
Rain Gauge Network		100			0.00
Lakes Monitoring - CAMP		760			0.00
Lakes Monitoring - TRPD					
Sentinel Lakes		8,100			0.00
Additional Lake		1,500			0.00
Aquatic Vegetation Surveys		325			0.00
Wetland Monitoring (WHEP)		4,000			0.00
Education 2018					0.00
Education		4,000	501.00		1,526.64
WMWA General Activities		5,000			3,000.00
WMWA Educators/Watershed Prep		4,500			2,000.00
WMWA Special Projects		2,000			0.00
Rain Garden Workshops		2,000			1,000.00
Education Grants		1,000			0.00
Macroinvertebrate Monitoring-River Watch		3,000			0.00
Projects ineligible for ad valorem		50,000			0.00
Studies / Project ID / SWA		35,000	381.44	254.87	1,384.26
Plan Amendments		2,000		444.54	444.54
<i>Transfer to (from) Encumbered Funds (see below)</i>					0.00
<i>Transfer to (from) Capital Projects (see CIP Tr</i>		490,000		66,760.20	66,760.20
<i>Transfer to (from) Cash Sureties (see below)</i>					0.00
<i>Transfer to (from) Grants (see below)</i>			-	-	20.32
<i>To Fund Balance</i>					0.00
TOTAL - Month			13,187.79	123,366.40	174,851.70
TOTAL Paid in 2019, incl late 2018 Expenses		970,796.00	159,315.46	282,681.86	2019 Paid

Elm Creek Watershed Management Commission 2019 Treasurer's Report

		2019 Budget	April 2019	May 2019	2019 Budget YTD
INCOME					
<i>From Fund Balance</i>					
Project Review Fee		80,000	707.20		7,646.70
Return Project Fee					0.00
Water Monitoring - TRPD Co-op Agmt 2018			5,000.00		
Water Monitoring - TRPD Co-op Agmt		5,000			0.00
WCA Fees		9,000			900.00
Return WCA Fee					0.00
Reimbursement for WCA Expense					654.81
WCA Escrow Earned					0.00
Member Dues		230,400			230,400.00
Interest/Dividends Earned		3,000	2,479.25		9,703.90
Transfer to (from) Capital Projects (see CIP Tr		490,000			0.00
Transfer to (from) Cash Sureties (see below)					
Transfer to (from) Grants (see below)			5,028.00	-	5,028.00
Misc Income					0.00
Total - Month			13,214.45	0.00	254,333.41
TOTAL Rec'd 2019, incl late 2018 Income		817,400.00	263,473.09	263,473.09	2019 Received
CASH SUMMARY		Balance Fwd			
Checking		0.00			
4M Fund		1,303,038.87	1,407,196.50	1,283,830.10	
Cash on Hand			1,407,196.50	1,283,830.10	
CASH SURETIES HELD		Balance Fwd			Activity 2019
WCA Escrows Received		30,000.00			1,000.00
WCA Escrow Reduced		0.00			0.00
Total Cash Sureties Held		30,000.00	31,000.00	31,000.00	
RESTRICTED / ENCUMBERED FUNDS		Balance Fwd			
Restricted for CIPs		621,135			621,135.00
Enc. Studies / Project Identification / SWA		62,832			62,831.80
Total Restricted / Encumbered Funds		683,967	683,966.80	683,966.80	
			April 2019	May 2019	2019 Budget YTD
GRANTS					
Fish Lake CWLA					
Revenue					-
Expense					20.32
Balance			-	-	(20.32)
Rush Creek SWA					
Revenue			5,028.00		5,028.00
Expense					-
Balance			5,028.00	-	5,028.00
BWSR Watershed-based Funding					
Revenue					-
Expense					-
Balance			-	-	-
TOTAL GRANTS					
Revenue			5,028.00	-	5,028.00
Expense			-	-	20.32
Balance			5,028.00	-	5,007.68

Elm Creek Watershed Management Commission 2019 Treasurer's Report

Claims Presented		General Ledger Account No	April	May	TOTAL
Campbell Knutson - Legal		521000			0.00
Connexus - Rain Gauge		551100		15.75	15.75
Barr Engineering - Proj Rev Consultant		578050			490.50
Barr Eng - Consultant Ravinia		578050		490.50	
Barr Eng - Consultant Cloquet Island		578050			
City of Medina-CIP 2014-01 Medina Tower Dri		563002		66,760.20	66,760.20
Hennepin County Treasurer					41,036.32
HCEE - Tech Svcs Project Reviews		578000		23,273.68	
HCEE - Tech Svcs WCA		579500		1,715.66	
HCEE - Tech Svcs Floodplain Mapping		580440		16,046.98	
U S Geological Survey - Stream Monitoring		551000		5,210.00	5,210.00
JASS					9,853.63
Administration		511000		7,565.49	
TAC Support		511000		918.02	
Annual Report		511000			
Website		581000		60.00	
Project Reviews		578100		552.74	
WCA		579000		57.97	
WCA Admin Reimbursable Mayers		579000			
Plan Amendment		541500		444.54	
Education		590000			
CIPs General		563001		254.87	
CIP 2016-02 Miss Shoreline Repair		563006			
Grant Opportunities		511000			
Grant - Fish Lake CWLA		584001			
Grant - Rush Creek SWA		584002			
Floodplain Mapping Admin		580430			
TOTAL CLAIMS					123,366.40

Elm Creek Watershed Management Commission
2019 Treasurer's Report - Capital Improvement Project Tracking

item 02b

CIPs		Amount	%age	TOTAL 2014	TOTAL 2015	TOTAL 2016	TOTAL 2017	TOTAL 2018	JAN 2019	FEB 2019	MAR 2019	APR 2019	MAY 2019	TOTAL 2019	TOTAL ALL YEARS
	2014-01 Medina Tower Drive	68,750	52.380												
	Revenue			-	68,916.44	(37.13)	(15.52)	6.56						-	68,870.35
	Expense			1,989.80	-	-	-	-						-	1,989.80
	Payment to City												66,760.20	66,760.20	66,760.20
	To Closed Project Account													(120.35)	120.35
	Balance			(1,989.80)	68,916.44	(37.13)	(15.52)	6.56					(66,760.20)	(66,880.55)	(0.00)
	2016-01 Fox Creek Phase 2 Bank Stabi	80,312.00	16.296												
	Revenue				-	-	80,353.26	(98.25)						-	80,255.01
	Expense				-	106.32	-	-						-	106.32
	Balance				-	(106.32)	80,353.26	(98.25)						-	80,148.69
	2016-04 Rush Creek Main Stem Restor	75,000.00	15.219												
	Revenue				-	-	75,042.75	(91.75)						-	74,951.00
	Expense				-	106.32	-	-						-	106.32
	Balance				-	(106.32)	75,042.75	(91.75)						-	74,844.68
	2016-05 Fish Lake Alum Trmt Phase 1	75,000.00	15.219												
	Revenue				-	-	75,042.75	(91.75)						-	74,951.00
	Expense				-	106.32	-	-						-	106.32
	Balance				-	(106.32)	75,042.75	(91.75)						-	74,844.68
	2017-01 Fox Creek Phase 3 Streambar	112,500.00	25.714												
	Revenue				-	-	-	112,347.11						-	112,347.11
	Expense				-	-	135.85	-						-	135.85
	Balance				-	-	(135.85)	112,347.11						-	112,211.26
	2017-03 Mill Pond Fishery & Habitat Re	250,000.00	57.143												
	Revenue				-	-	-	249,663.63						-	249,663.63
	Expense				-	-	135.86	-						-	135.86
	Balance				-	-	(135.86)	249,663.63						-	249,527.77
	2017-04 Rain Garden at Independence	75,000.00	17.143												
	Revenue				-	-	-	74,899.52						-	74,899.52
	Expense				-	-	135.85	-						-	135.85
	Balance				-	-	(135.85)	74,899.52						-	74,763.67
	2018-01 Rush Creek Ph 3 Main Stem S	75,000.00													
	Revenue				-	-	-	-						-	-
	Expense				-	-	-	115.18						-	115.18
	Balance				-	-	-	(115.18)						-	(115.18)
	2018-02 Elm Creek Reach D Stream Re	212,500.00													
	Revenue				-	-	-	-						-	-
	Expense				-	-	-	115.18						-	115.18
	Balance				-	-	-	(115.18)						-	(115.18)
	2018-03 Elm Creek Phase III Stream Re	100,000.00													

**Elm Creek Watershed Management Commission
2019 Treasurer's Report - Capital Improvement Project Tracking**

item 02b

CIPs		Amount	%age	TOTAL 2014	TOTAL 2015	TOTAL 2016	TOTAL 2017	TOTAL 2018	JAN 2019	FEB 2019	MAR 2019	APR 2019	MAY 2019	TOTAL 2019	TOTAL ALL YEARS
	Revenue				-	-	-	-						-	-
	Expense				-	-	-	115.18						-	115.18
	Balance				-	-	-	(115.18)						-	(115.18)
	2018-04 Downs Road Trail Rain Garde	75,000.00													
	Revenue				-	-	-	-						-	-
	Expense				-	-	-	115.18						-	115.18
	Balance				-	-	-	(115.18)						-	(115.18)
TOTAL CIP															
	Revenue			-	131,570.13	249,795.17	494,329.63	436,392.95	-	-	-	-	-	-	1,312,087.88
	Expense			3,621.61	2,606.17	812.59	407.56	685.72	-	-	-	-	-	-	8,133.65
	Payments					245,276.36	1,836.48	322,859.09	-	-	-	-	-	-	569,971.93
	Balance			(3,621.61)	128,963.96	3,706.22	492,085.59	111,626.42	-	-	-	-	(66,760.20)	(66,880.55)	665,880.03
CLOSED PROJECT FUND															
	2014-02 Champlin Mill Pond Dam							82.31							82.31
	2015-01 Plymouth Elm Creek Restoration							1,139.41							1,139.41
	2014-01 Medina Tower Drive													120.35	120.35
	Balance Closed Project Fund														1,342.07
TOTAL CIP & Closed Project Fund															
															667,222.10
COMPLETED PROJECTS \$0 BALANCE															
	2016-02 Miss River Shore Repair/Stabilization							COMPLETE							
	2016-03 EC Dam at Mill Pond							COMPLETE							



Account Number: 481113-238425 item 02b

ELM CREEK WATERSHED MGMT ORG

Monthly Statement

Service Address
ELM CREEK RD
DAYTON MN

Billing Summary

Billing Date: Apr 17, 2019

Previous Balance	\$16.26
Payments - Thank You!	\$16.26
Balance Forward	\$0.00
New Charges	\$15.75

Total Amount Due **\$15.75**

Payment must be received on or before May 13, 2019

Total Amount Due

\$15.75

Due Date

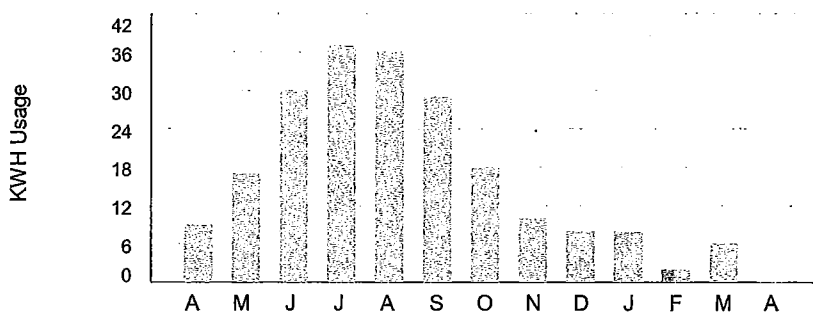
May 13, 2019

Message Center

How much energy do you want to save?

Our new Peak Time Rebate program lets you decide how much energy you want to save. On this program, you help us save energy on days when it's most expensive for energy to be produced. In turn, we pay you for each kilowatt-hour of energy saved when compared to your normal usage. For more information, visit us as connexusenergy.com.

Energy Comparison ■ Previous Months' Usage ■ Current Month's Usage



How to contact us

Member Services / Moving - 763-323-2650
Outages and Emergencies - 763-323-2660
Hearing/Speech Impaired Call - 711 or 800-627-3529
Email: info@connexusenergy.com
www.connexusenergy.com
Gopher State One Call - 811
14601 Ramsey Boulevard, Ramsey, MN 55303

▼ Please detach at perforation and return this portion with a check or money order made payable to Connexus Energy ▼

TRA3-D-007274/006752 AGWUXH S1-ET-M1-C00002



Account Number: 481113-238425

Total Amount Due **\$15.75**

Payment Due By **May 13, 2019**

007274 1 AB 0.409 003280/007274/006752 028 02 AGWUXH
ELM CREEK WATERSHED MGMT ORG
3235 FERNBROOK LN N
PLYMOUTH MN 55447-5325



Connexus Energy
PO Box 1808
Minneapolis, MN 55480-1808

00001575 0004811130238425 000000 00000 000000000000 0000009



INVOICE

Barr Engineering Co.
 4300 MarketPointe Drive, Suite 200
 Minneapolis, MN 55435
 Phone: 952-832-2600; Fax: 952-832-2601
 FEIN #: 41-0905995 Inc: 1966

Ms. Judie Anderson
 Elm Creek Watershed Management
 JASS-Watershed Administrators
 3235 Fernbrook Lane
 Plymouth, MN 55447

April 22, 2019
 Invoice No: 23270F55.05 - 11

Total this Invoice	\$490.50
---------------------------	-----------------

Regarding: Elm Creek Wetland Mitigation Monitoring

This invoice is for professional services related to Elm Creek Wetland Mitigation Monitoring project, which included the following tasks:

Job 001 – Ravinia Wetland Mitigation

Task 002 –2018 Monitoring and Report

- Communications with Jim Kujawa at Hennepin County
- Finalized 2018 monitoring report and sent to USACE for review
- Project management and invoicing

Professional Services from February 23, 2019 to March 22, 2019

Job:	001	Ravinia Wetland Mitigation
Task:	002	2018 Monitoring and Report

Labor Charges

	Hours	Rate	Amount	
Engineer / Scientist / Specialist III				
Wold, Karen	.10	130.00	13.00	
Engineer / Scientist / Specialist II				
Burgner, Brian	3.10	105.00	325.50	
Support Personnel II				
Nypan, Nyssa	1.60	95.00	152.00	
	4.80		490.50	
Subtotal Labor				490.50
		Task Subtotal		\$490.50
		Job Subtotal		\$490.50
		Total this Invoice		\$490.50

	Current	Prior	Total	Received	A/R Balance
Invoiced to Date	490.50	14,504.25	14,994.75	14,504.25	490.50

Thank you in advance for your prompt processing of this invoice. If you have any questions, please contact your Barr Project Manager, Jeff Weiss, Phone: 952-832-2706 or E-Mail: jweiss@barr.com.

PLEASE REMIT TO ABOVE ADDRESS and INCLUDE INVOICE NUMBER ON CHECK.

Terms: Due upon receipt. 1 1/2% per month after 30 days. Please refer to the contract if other terms apply.

DI-1040

UNITED STATES DEPARTMENT OF THE INTERIOR
DOWN PAYMENT (BILL) REQUEST

Page:1

Make Remittance Payable To: U.S. Geological Survey
Billing Contact: Angela Hughes, Adm. Ops. Asst. Phone: 651-280-5735

Bill #: 90717301
Customer: 6000001534
Date: 04/11/2019
Due Date: 06/10/2019

Remit Payment To: United States Geological Survey
P.O. Box 71362
Philadelphia, PA 19176-1362

Payer: Elm Creek Conservation Mgmt. & PC
Judie Anderson
3235 Fernbrook Lane
Plymouth MN 55447

Additional forms of payment may be accepted. Please email GS-A-HQ_RMS@USGS.GOV or call 703-648-7683 for additional information.

To pay through Pay.gov go to <https://www.pay.gov>.

Checks must be made payable to U.S. Geological Survey. Please detach the top portion or include bill number on all remittances.

Amount of Payment: \$ _____

Date	Description	Qty	Unit Price		Amount
			Cost	Per	
04/11/2019	Billing for the operation and maintenance of a gaging station and water-quality sampling on Elm Creek near Champlin. 18NQJFA0020	1	5,210.00	1	5,210.00

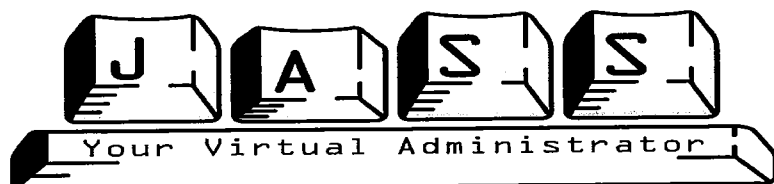
Amount Due this Bill: 5,210.00

Accounting Classification:
Sales Order: 77379
Sales Office: GENK
Customer: 6000001534
Accounting #: 10982739

TIN: *****6985

612-348-3777, Phone
612-348-8532, Fax
hennepin.us/environment

4/30/19



3235 Fernbrook Lane
Plymouth MN 55447

Elm Creek Watershed Management Commission
3235 Fernbrook Lane
Plymouth, MN 55447

2-May-19

Total by
Project Area

Administrative	3.93	55.00	216.15	
Administrative	82.42	60.00	4,945.20	
Admin - Offsite	2.27	70.00	158.90	
Office Support	6.00	200.00	1,200.00	
Storage Unit	1.00	140.62	140.62	
Data Processing/File Mgmt		55.00	0.00	
File Management		60.00	0.00	
Archiving		60.00	0.00	
Admin - Reimbursable Expense	904.62	1.00	904.62	7,565.490
Admin - TAC support	2.16	55.00	118.80	
Admin - TAC support	7.16	60.00	429.60	
Admin - TAC support offsite	2.67	70.00	186.90	
TAC Support - Reimbursable Expense	182.72	1.00	182.72	918.020
Website		55.00	0.00	
Website	1.00	60.00	60.00	
Website - Reimbursable Expense		1.00	0.00	
Web Domain, hosting thru June 2020		1.00	0.00	60.000
Project Reviews - Secre		55.00	0.00	
Project Reviews - Admin	6.75	60.00	405.00	
Project Reviews - Admin offsite		70.00	0.00	
Project Reviews - Admin - File Mgmt		55.00	0.00	
Project Reviews - Reimbursable Expense	147.74	1.00	147.74	552.740
WCA - Secre - reimbursable	0.50	55.00	27.50	
WCA - Admin - reimbursable Mayers		60.00	0.00	
WCA - Reimbursable Expense -Mayers	30.47	1.00	30.47	57.970
CIPs - General - Secretarial		55.00	0.00	
CIPs - Administrative	4.07	60.00	244.20	
CIPs- Offsite Admin		70.00	0.00	
CIPs - reimbursables	10.67	1.00	10.67	254.870
Plan Amendment - Secre		55.00	0.00	
Plan Amendment - Admin	7.05	60.00	423.00	
Plan Amendment - Offsite		65.00	0.00	
Plan amendment - reimbursable	21.54	1.00	21.54	444.540
Invoice Total				9,853.630



CITY OF MEDINA
 2052 COUNTY ROAD 24
 MEDINA MN 55340

Invoice

No. 00006618
 Date 4/23/2019

To: ELM CREEK WATERSHED
 MANAGEMENT COMMISSION
 3235 FERNBROOK LANE N.
 PLYMOUTH MN 55447

Ship To: ELM CREEK WATERSHED
 MANAGEMENT COMMISSION
 3235 FERNBROOK LANE N.
 PLYMOUTH MN 55447

Shipped	Ship Via	Terms	Contract	Contact	Customer PO#
		UPON RECEIPT			
Description					Amount
TOWER DRIVE IMPROVEMENT PROJECT - TOTAL PROJ COST \$319,826.80 25% GRANT APPROVAL CAPPED AT \$68,750.00 PER AGREEMENT DATED 11/21/14					\$68,750.00
Special Instructions				SubTotal	\$68,750.00
				Tax	\$0.00
				Shipping	\$0.00

PAID \$0.00
Total \$68,750.00

Do not combine utility payments with this invoice.

Please reference the invoice number on your payment.

Questions? Contact Accounts Receivable 763.473.8849



ThankYou !

May 2, 2019

Total Levy Amount	\$ 68,750.00
Less Administrative Expenses	(1,989.80)
Total Payment to City	\$ 66,760.20



3235 Fernbrook Lane
 Plymouth, MN 55447
 (763) 553-1144
 Fax: (763) 553-9326
 judie@jass.biz

To: Elm Creek Commissioners
From: Judie Anderson
Date: May 8, 2019
Subject: Public Meeting – Minor Plan Amendment

On April 10, 2019 the Elm Creek Watershed Management Commission, upon recommendation of the Technical Advisory Committee, approved a motion to move forward with a Minor Plan Amendment to its Third Generation Watershed Management Plan to revise the Capital Improvement Program as follows:

- A. Add the following projects:
 - 1. Brockton Lane Water Quality Improvements, Plymouth, est cost \$150,000, Comm share in 2020 \$37,500 (*line 46*)
 - 2. The Meadows Playfield, Plymouth, est cost \$5,300,000, Comm share in 2020 \$250,000 (*line 48*)
 - 3. Enhanced Street Sweeper, Plymouth, est cost \$350,000, Comm share in 2020 \$75,000 (*line 49*)
- B. Remove the following project:
 - 1. Stone's Throw Wetland, Corcoran, est cost \$450,000, Comm share in 2019 \$112,500 (*line 21*)
- C. Shift the funding/timing for the following projects as follows:
 - 1. Ranchview Wetland Restoration, Maple Grove, est. cost \$2,500,000, shift \$125,000 from 2019 to 2020 (*line 23*)
 - 2. Mill Pond Raingarden, Champlin, est cost \$400,000, shift \$100,000 from 2019 to 2020 (*line 30*)
 - 3. Agricultural BMPs Cost Share, watershedwide, adjust \$50,000 in 2019 to \$20,000 (*line 34*)
 - 4. Hickory Drive Stormwater Improvement, Medina, est cost adjusted to \$307,920; Comm share in 2019 adjusted to \$76,823 (*line 37*)
 - 5. Downtown Regional Stormwater Pond, Corcoran, est cost adjusted to \$105,908; Comm share in 2019 adjusted to \$26,500 (*line 39*)
 - 6. Lowell Road Raingarden, Champlin, est cost \$400,000, shift \$100,000 from 2019 to 2020 (*line 43*)
- D. The remaining projects on the CIP are unchanged.

COMMISSION ACTION

The purpose of the public meeting is to present the proposed amendment and to take comment from the member cities and the public. The purpose of the public meeting is NOT to approve going forward with any of these projects. The recommended order of business is as follows:

- 1. Suspend regular meeting
- 2. Staff report
- 3. Commission discussion
- 4. Open public meeting
- 5. Take comments from member cities
- 6. Take comments from public

7. Close public meeting
8. Commission discussion
9. Consider approving Resolution 2019-02
10. Resume regular meeting

COMMENTS RECEIVED

No comments have been received as of 5:00 p.m., May 1, 2019.

STAFF RECOMMENDATION

The Technical Advisory Committee has reviewed the proposed revisions to the Capital Improvement Program and found them to be consistent with the Commission's requirements. At their April 10, 2019 meeting the Commission approved the revisions and directed Staff to move forward with a Minor Plan Amendment.

Staff recommends that the Commission approve the amendment and adopt Resolution 2019-02. The Resolution will be effective upon approval of the amendment by the Hennepin County Board of Commissioners.

Legal Notice
NOTICE OF PUBLIC MEETING
Elm Creek Watershed Management Commission

TO WHOM IT MAY CONCERN:

Notice is hereby given that the Elm Creek Watershed Management Commission will meet at Maple Grove City Hall, 12800 Arbor Lakes Parkway, Maple Grove, MN, on Wednesday, May 8, 2019, at 11:30 a.m., or as soon thereafter as the matter may be heard, for a public meeting on a proposed management plan amendment.

The Commission proposes to amend its *Third Generation Watershed Management Plan* to adopt revisions to its 2019 Capital Improvement Program (CIP).

The following projects would be added:

Brockton Lane Water Quality Improvements, Plymouth, est cost \$150,000, Comm share in 2020 \$37,500

The Meadows Playfield, Plymouth, est cost \$5,300,000, Comm share in 2020 \$250,000

Enhanced Street Sweeper, Plymouth, est cost \$350,000, Comm share in 2020 \$75,000

The following project would be removed:

Stone's Throw Wetland, Corcoran, est cost \$450,000, Comm share in 2019 \$112,500

Funding for the following projects would be shifted or adjusted:

Lowell Road Raingarden, Champlin, est cost \$400,000, shift \$100,000 from 2019 to 2020

Mill Pond Raingarden, Champlin, est cost \$400,000, shift \$100,000 from 2019 to 2020

Ranchview Wetland Restoration, Maple Grove, est. cost \$2,500,000, shift \$125,000 from 2019 to 2020

Agricultural BMPs Cost Share, watershedwide, adjust \$50,000 in 2019 to \$20,000

Hickory Drive Stormwater Improvement, Medina, est cost adjusted to \$307,920; Comm share in 2019 adjusted to \$76,823

Downtown Regional Stormwater Pond, Corcoran, est cost adjusted to \$105,908; Comm share in 2019 adjusted to \$26,500

The remaining projects on the CIP are unchanged.

The Elm Creek watershed includes parts of the cities of Champlin, Corcoran, Dayton, Maple Grove, Medina, Plymouth and Rogers.

Persons who desire to be heard with reference to the proposed amendment will be heard at this meeting. Written comments may be submitted to Doug Baines, chair of the Elm Creek Commission, c/o JASS, 3235 Fernbrook Lane, Plymouth, MN 55447, or emailed to judie@jass.biz. Auxiliary aids for persons with handicaps are available upon request at least seven days in advance. Please contact Judie Anderson at 763-553-1144 to make arrangements.

/s/ Doug Baines, Chair

Elm Creek Watershed Management Commission

By order of the Elm Creek Watershed Management Commission

###

1 Table 4.5. Elm Creek Third Generation Plan Capital Improvement Program

3	Description	Location	Priority	Est Proj Cost		Partners	Funding Source(s)	Estimated Commission Cost					
4	Special Studies							2015	2016	2017	2018	2019	2020-2024
5	TMDL implementation special study	Watershed	H	\$225,000.00		Cities, HCEED	Operating budget	0	25,000	25,000	25,000	25,000	125,000
6	Stream segment prioritization	Watershed	H	\$20,000.00		Cities, HCEED, TRPD	Operating budget	10,000	0	0	0	10,000	0
7	High Priority Stream Restoration Projects					Cities, TRPD	Cities, TRPD, county levy, grants						
8	Elm Cr Reach E	Plymouth	H	\$1,086,000.00		Commission, Plymouth	County Levy - levied in 2015	250,000					
9	CIP-2016-RO-01 Fox Cr, Creekview	Rogers	H	\$321,250.00		Commission, Rogers	County Levy - levied in 2016	0	80,312	0	0	0	0
10	Mississippi Point Park Riverbank Repair	Champlin	M	\$300,000.00			County Levy - levied in 2016	0	75,000	0	0	0	0
11	Elm Creek Dam	Champlin	H	\$7,001,220.00			County Levy - levied in 2016	0	187,500	0	0	0	0
12	Tree Thinning and Bank Stabilization Project	Watershed	H	\$50,000.00				0		50,000	50,000	50,000	250,000 300,000
13	Fox Cr, Hyacinth	Rogers	M	\$360,000.00			County Levy - levied in 2017	0	0	90,000 112,500	0	0	0
14	Fox Cr, South Pointe, Rogers MOVED TO 2021	Rogers	M	\$90,000.00				0	0	22,500	0	22,500	22,500
15	Other High Priority Stream Project	Watershed	H	\$500,000.00				0	0	0	125,000	125,000	250,000
16	CIP-2016-MG-02 Rush Creek Main	Maple Grove		\$1,650,000.00			County Levy - levied in 2016		75,000	75,000	75,000	25,000	
17	CIP-2016-MG-03 Rush Creek South	Maple Grove		\$675,000.00							168,750		
18	CIP-2017-PL-01 EC Stream Restoration Reach D	Plymouth		\$850,000.00		City, County, Comm	City, County, Comm				212,500		
19	High Priority Wetland Improvements					Cities	Cities, Commission						
20	DNR #27-0437	Maple Grove	L	\$75,000.00				0	0	0	0	0	18,750
21	Stone's Throw Wetland REMOVED 2019	Corcoran	M					0	0	112,500	112,500	112,500	0
22	Other High Priority Wetland Projects	Watershed	L	\$100,000.00				0	0	0	0	0	25,000
23	CIP-2016-MG-01 Ranchview Wetland Restoration MOVED TO 2019	Maple Grove		2,500,000.00						250,000	250,000	250,000 125,000	125,000
24	Lake TMDL Implementation Projects					Cities, lake assns.	Cities, Comm, grants, owners						
25	Mill Pond Fishery and Habitat Restoration	Champlin	H	\$5,000,000.00			County Levy - levied in 2017	0	0	250,000	0	0	0
26	Other Priority Lake Internal Load Projects	Watershed	M	\$100,000.00				0	0	0	0	0	25,000
27		Maple Grove	H	\$300,000.00		City, TPRD, Comm, lake assn	County Levy - levied in 2016		75,000				
28	Stonebridge	Maple Grove	M			retrofit of some addl stormsewer treatment systems will not occur during street reconstruction		0		50,000	0	0	0
29	Rain Garden at Independence Avenue	Champlin	L	\$300,000.00			County Levy - levied in 2017	0		75,000	0	0	0
30	CIP-2016-CH-01 Mill Pond Rain Gardens	Champlin	M	\$400,000.00				0	0		100,000	100,000	100,000
31	Other Priority Urban BMP Projects	Watershed	L	\$200,000.00				0	0	0	0	0	50,000
32	Other												
33	Livestock Excluss, Buffer & Stabilized Access	Watershed	M	\$50,000.00		Cities, owners, U Extension, NRCS	Cities, owners, Comm, NRCS	0	0	0	50,000	0	50,000
34	Agricultural BMPs Cost Share	Watershed	H	\$50,000.00		Cities, owners, U Extension, NRCS	Cities, owners, Comm, NRCS	0		50,000	50,000	50,000 20,000	50,000
35	CIP-2016-RO-04 -CIP-2017-RO-1 Ag-BMPs-Cowley-Sylvan Connections BMPs	Rogers		\$300,000.00		City, Comm	City, Comm, BWSR				75,000		
36	CIP-2016-RO-03 Downtown Pond Exp & Reuse	Rogers		\$406,000.00							101,500		
37	Hickory Drive Stormwater Improvement CITY WILL PROVIDE ADJUSTED COST	Medina		\$225,000.00		City, Comm, Grants						56,250 76,823	
38	SE Corcoran Wetland Restoration	Corcoran		\$400,000.00		City, Comm, 319 Grant						100,000	100,000
39	Downtown Regional Stormwater Pond REQUIRES FEASIBILITY STUDY	Corcoran		\$50,000.00		City, Comm						10,000 26,500	
40	Elm Creek Stream Restoration Phase III	Champlin	H	\$400,000.00							100,000		
41	Downs Road Trail Raingarden	Champlin	H	\$300,000.00							75,000		
42	Elm Creek Stream Restoration Phase IV	Champlin	H	\$600,000.00								150,000	
43	Lowell Pond Raingarden	Champlin	H	\$400,000.00								100,000	100,000
44	Rush Creek Headwaters SWA BMP Implementation	Corcoran/Rogers	H	\$200,000.00		cities, county, TRPD	cities, county, TRPD, owners						50,000
45	Hydrologic & Hydraulic Modeling	Watershed	L	\$25,000.00		HCEE	Commission	0	0	0	25,000	0	0
46	Brockton Lane Water Quality improvements NEW 2019	Plymouth		\$150,000.00								0	37,500
47	Mill Pond Easement NEW, REMOVED 2019	Champlin		\$64,000.00								16,000	
48	The Meadows Playfield NEW 2019	Plymouth		5,300.00									250,000
49	Enhanced Street Sweeper NEW 2019	Plymouth		\$350,000.00									75,000
50	Fourth Generation Plan	Watershed	L	\$70,000.00			Commission	0	0	0	0	0	\$70,000
51	TOTAL STUDIES			245,000			COMM SHARE TOTAL STUDIES	10,000	25,000	25,000	25,000	35,000	125,000
52	TOTAL CIPS			25,898,470			COMM SHARE TOTAL CIPS	\$ 250,000	\$ 492,812	\$ 935,000	\$ 1,032,750	\$ 932,250	\$ 1,403,750
53										\$ 437,500	462,500	\$ 423,323	
Projects levied in prior years		Projects added/revise			Projects levied 2017, payable 2018			Projects added/revise			Projects levied 2019		

EXHIBIT A

**Elm Creek Watershed Management Commission
Capital Improvement Project Submittal**

*(This submittal will be rated on its completeness and adherence to the goals of the Commission.
A second page may be used to provide complete responses.)*

City	Plymouth	
Contact Name	Ben Scharenbroich	
Telephone	763-509-5527	
Email	bscharenbroich@plymouthmn.gov	
Address	3400 Plymouth Blvd, Plymouth MN 55447	
Project Name	Brockton Lane Water Quality Improvements	
	1. Is project in Member's CIP? (X) yes () no	Proposed CIP Year = 2020
	2. Has a feasibility study or an engineering report (circle one) been done for this project? (X) yes () no	
		Amount
	Total Estimated Project Cost	\$150,000
	Estimated Commission Share (up to 25%, not to exceed \$250,000)	\$37,500
	Other Funding Sources (name them) City of Plymouth	\$112,500
		\$
	3. What is the scope of the project? The proposed project would incorporate underground treatment practices such as a hydrodynamic separator or underground filtration/infiltration device which will reduce rates and pollutant loading to Elm Creek and Rice Lake.	
	4. What is the purpose of the project? What water resource(s) will be impacted by the project? The purpose of the project is to provide additional water quality treatment before water is discharged off the Brockton Lane project site into a wetland that drains directly into Elm Creek.	
	5. What is the anticipated improvement that would result from the project? (Include size of area treated and projected nutrient reduction.) Modeled pollutant removal information would be provided to the Elm Creek Watershed Management Commission as part of the final project review.	
	6. How does the project contribute to achieving the goals and programs of the Commission? Elm Creek is part of the Rice Lake watershed and the goal of the project is to reduce phosphorus and total suspended solids levels in Elm Creek as part of the reductions needed to satisfy TMDL requirements.	
0/10	7. Does the project result from a regulatory mandate? (X) yes () no How? TMDL for Elm Creek and Rice Lake	
0/10/20	8. Does the project address one or more TMDL requirements? (X) yes () no Which? Rice Lake – Nutrient/Eutrophication Elm Creek – Dissolved Oxygen	
0/10/20	9. Does the project have an educational component? () yes (X) no Describe.	
0/10	10. Do all the LGUs responsible for sharing in the cost of the project agree to go forward with this project? (X) yes () no Identify the LGUs. City of Plymouth	
10/20	11. Is the project in all the LGUs' CIPs? (X) yes () no	
1-34	(For TAC use)	
	12. Does project improve water quality? (0-10)	15. Promote groundwater recharge? (0-3)
	13. Prevent or correct erosion? (0-10)	16. Protect and enhance fish and wildlife habitat? (0-3)
	14. Prevent flooding? (0-5)	17. Improve or create water recreation facilities? (0-3)

EXHIBIT A

**Elm Creek Watershed Management Commission
Capital Improvement Project Submittal**

*(This submittal will be rated on its completeness and adherence to the goals of the Commission.
A second page may be used to provide complete responses.)*

City	Plymouth	
Contact Name	Ben Scharenbroich	
Telephone	763-509-5527	
Email	bscharenbroich@plymouthmn.gov	
Address	3400 Plymouth Blvd, Plymouth MN 55447	
Project Name	The Meadows Playfield & Water Quality Improvements	
	1. Is project in Member's CIP? () yes (X) no *will be added to city CIP in 2019	Proposed CIP Year = 2022
	2. Has a feasibility study or an engineering report (circle one) been done for this project? () yes (X) no	
		Amount
	Total Estimated Project Cost	\$5,300,000
	Estimated Commission Share (up to 25%, not to exceed \$250,000)	\$250,000
	Other Funding Sources (name them) City of Plymouth Parks & Recreation , Transit & Water Resources	\$5,300,000
		\$
	3. What is the scope of the project? <p>This project is a collaboration between the Plymouth Parks & Recreation, Transit and Water Resources Departments to construct the cities 10th Playfield at the intersection of County Road 47 and Peony Lane. The project is proposed to construct a multi-use stadium, splash pad, pickle ball courts and a Plymouth Metrolink (transit) park and ride to serve the residents in the northwest portion of the city.</p> <p>Water quality improvements with the project will be vetted through the design process, however, potential best management practices to be utilized could include; underground hydrodynamic separators, underground storage and filtration/infiltration, water reuse (irrigation and grey water), pervious pavement, iron enhanced sand filters, rain gardens and tree trenches. Any funds received from the watershed for this project would be used to provide water quality improvements above and beyond what is required for the project.</p>	
	4. What is the purpose of the project? What water resource(s) will be impacted by the project? <p>The intent of this project would be to provide as much rate control and water quality treatment on the project site as possible due to the proximity to Elm Creek. The city is committed to exploring all options for water quality and quantity improvements and providing education about the site to visitors.</p> <p>There are 3 delineated wetlands on this project, 2 of which could be impacted by the construction of this project. The City will work with the required permitting agencies to ensure any impacts are approved.</p>	
	5. What is the anticipated improvement that would result from the project? (Include size of area treated and projected nutrient reduction.) <p>Modeled pollutant removal information would be provided to the Elm Creek Watershed Management Commission as part of the final project review.</p>	
	6. How does the project contribute to achieving the goals and programs of the Commission? <p>Elm Creek is part of the Rice Lake watershed and the goal of the project is to reduce phosphorus and total suspended solids levels in Elm Creek as part of the reductions needed to satisfy TMDL requirements.</p>	

0/10	7. Does the project result from a regulatory mandate? (X) yes () no How? TMDL for Elm Creek and Rice Lake	
0/10/20	8. Does the project address one or more TMDL requirements? (X) yes () no Which? Rice Lake – Nutrient/Eutrophication Elm Creek – Dissolved Oxygen	
0/10/20	9. Does the project have an educational component? (X) yes () no Describe. This facility will be a multi-use facility and as such, Plymouth is committed to providing education about the water quality improvement components of the project. Educational components at the project site could be, but would not be limited to educational brochures & signage explaining what is installed and how it improves water quality and promotes conservation.	
0/10	10. Do all the LGUs responsible for sharing in the cost of the project agree to go forward with this project? (X) yes () no Identify the LGUs. City of Plymouth	
10/20	11. Is the project in all the LGUs' CIPs? (X) yes () no Will be added in 2019	
1-34	(For TAC use) 12. Does project improve water quality? (0-10) 13. Prevent or correct erosion? (0-10) 14. Prevent flooding? (0-5)	15. Promote groundwater recharge? (0-3) 16. Protect and enhance fish and wildlife habitat? (0-3) 17. Improve or create water recreation facilities? (0-3)
TOTAL (poss 114)		Adopted April 11, 2012

Z:\ELM CREEK\MANAGEMENT PLAN\EXHIBIT A_APRIL 2012F.DOC

EXHIBIT A

**Elm Creek Watershed Management Commission
Capital Improvement Project Submittal**

*(This submittal will be rated on its completeness and adherence to the goals of the Commission.
A second page may be used to provide complete responses.)*

City	Plymouth	
Contact Name	Ben Scharenbroich	
Telephone	763-509-5527	
Email	bscharenbroich@plymouthmn.gov	
Address	3400 Plymouth Blvd, Plymouth, MN 55447	
Project Name	Enhanced Street Sweeper	
	1. Is project in Member's CIP? (X) yes () no	Proposed CIP Year = 2020
	2. Has a feasibility study or an engineering report (circle one) been done for this project? () yes (X) no	
		Amount
	Total Estimated Project Cost	\$350,000
	Estimated Commission Share (up to 25%, not to exceed \$250,000)	\$75,000
	Other Funding Sources (name them) Single Creek Watershed Management Commission, Bassett Creek Watershed Management Commission & Minnehaha Creek Watershed District	\$225,000
	City of Plymouth	\$50,000
	3. What is the scope of the project? The City is looking to purchase a high-efficiency street sweeper to improve street sweeping efficiency and reduce pollutant loading to Elm Creek.	
	4. What is the purpose of the project? What water resource(s) will be impacted by the project? Street sweeping is one of the most cost effective best management practices for improving water quality and reducing pollutant loading to Elm Creek and Rice Lake. Plymouth is bringing our street sweeping program in-house in 2019 and is committed to expanding our street sweeping program to address water quality concerns.	
	5. What is the anticipated improvement that would result from the project? (Include size of area treated and projected nutrient reduction.) There are 44 centerline (88 curb miles) in the City of Plymouth within the Elm Creek Watershed. As such, the following are the estimated pollutant removals from this practice based on the Minnesota Stormwater Manual. Phosphorus = 65 pounds per sweep or 260 pounds per year Nitrogen = 435 pounds per sweep or 1,740 pounds per year Chloride = 11 pounds per year or 44 pounds per year. The City will also analyze its sweeping frequencies as recommended by the Minnesota Stormwater Manual and make adjustments as necessary	
	6. How does the project contribute to achieving the goals and programs of the Commission? The goal of this purchase is to help reduce pollutant loading to Elm Creek and eventually Rice Lake to work towards TMDL goals. A secondary goal would to expand public education regarding street sweeping.	
0/10	7. Does the project result from a regulatory mandate? (X) yes () no How? TMDL for Elm Creek and Rice Lake	
0/10/20	8. Does the project address one or more TMDL requirements? (X) yes () no Which? Rice Lake – Nutrient/Eutrophication	
0/10/20	9. Does the project have an educational component? (X) yes () no Describe. The City is committed to educating the public on the benefits of street sweeping for water quality	

	through our website, newsletters and videos. Plymouth would also include graphics on the street sweeper to promote the benefits of street sweeping and can include the Elm Creek Watershed Management Commissions logo on the sweeper.	
0/10	10. Do all the LGUs responsible for sharing in the cost of the project agree to go forward with this project? (<input checked="" type="checkbox"/>) yes () no Identify the LGUs.	
10/20	11. Is the project in all the LGUs' CIPs? (<input checked="" type="checkbox"/>) yes () no	
1-34	<i>(For TAC use)</i> 12. Does project improve water quality? (0-10) 13. Prevent or correct erosion? (0-10) 14. Prevent flooding? (0-5)	15. Promote groundwater recharge? (0-3) 16. Protect and enhance fish and wildlife habitat? (0-3) 17. Improve or create water recreation facilities? (0-3)
TOTAL (poss 114)		Adopted April 11, 2012

Z:\ELM CREEK\MANAGEMENT PLAN\EXHIBIT A_APRIL 2012F.DOC

EXHIBIT A

LINE 21

Elm Creek Watershed Management Commission Capital Improvement Project Submittal

*(This submittal will be rated on its completeness and adherence to the goals of the Commission.
A second page may be used to provide complete responses.)*

City	Corcoran and Rogers		
Contact Name	Kent Torge, Corcoran City Engineer; John Seifert, Rogers Public Works Supt.		
Telephone	Kent Torge: 763-479-4209; John Seifert: 763-428-8580		
Email	ktorve@wenck.com ; jseifert@rogersmn.gov		
Address	City of Corcoran, 8200 County Road 116, Corcoran, MN 55340 City of Rogers Public Works, 22350 South Diamond Lake Road, Rogers, MN 55374		
Project Name	Stone's Throw Wetland Restoration (Name will change)		
	1. Is project in Member's CIP? () yes (x) no		Proposed CIP Year = 2019
	2. Has a feasibility study or an engineering report (circle one) been done for this project? () yes (x) no		
			Amount
	Total Estimated Project Cost		\$450,000
	Estimated Commission Share (up to 25%, not to exceed \$250,000)		\$112,500
	Other Funding Sources (name them): grants, municipal budgets		\$337,500
			\$450,000
	3. What is the scope of the project? Details TBD, but this multi-city effort would address the impairments in Rush Creek.		
	4. What is the purpose of the project? What water resource(s) will be impacted by the project? The purpose is to address the impairments (bacteria, dissolved oxygen, fish bioassessment) in Rush Creek.		
	5. What is the anticipated improvement that would result from the project? (Include size of area treated and projected nutrient reduction.) The project would improve Rush Creek by decreasing bacteria, increasing dissolved oxygen, and/or improving conditions to support fish. Size of area treated TBD. (To be updated.)		
	6. How does the project contribute to achieving the goals and programs of the Commission? This project would improve water quality in Rush Creek.		
0/10	7. Does the project result from a regulatory mandate? (x) yes () no How? The project results from a regulatory mandate to implement TMDL projects and report on their progress through municipal MS4 programs.		
0/10/20	8. Does the project address one or more TMDL requirements? (x) yes () no Which? The Elm Creek Watershed-Wide WRAPS, expected to be approved by the EPA in 2017, lists this project as a protective strategy for Rush Creek.		
0/10/20	9. Does the project have an educational component? () yes (x) no Describe. An educational opportunity may arise when the Regional Trail is installed. Educational signage could explain wetland functions, Elm Creek watershed, identification of vegetation. Would involve partnership with Three Rivers Park District.		
0/10	10. Do all the LGUs responsible for sharing in the cost of the project agree to go forward with this project? (x) yes () no Identify the LGUs. The City of Rogers contracts with Kjolhaug Environmental for LGU services; Elm Creek Watershed Management Commission (ECWMC) is the LGU for Corcoran.		
10/20	11. Is the project in all the LGUs' CIPs? (x) yes (x) no The project is on ECWMC's CIP, but not on Rogers' CIP. (To be updated.)		
1-34	(For TAC use)		
	12. Does project improve water quality? (0-10)	15. Promote groundwater recharge? (0-3)	
	13. Prevent or correct erosion? (0-10)	16. Protect and enhance fish and wildlife habitat? (0-3)	
	14. Prevent flooding? (0-5)	17. Improve or create water recreation facilities? (0-3)	
TOTAL (poss 114)		Adopted April 11, 2012	

EXHIBIT A

Elm Creek Watershed Management Commission Capital Improvement Project Submittal

(This submittal will be rated on its completeness and adherence to the goals of the Commission.
A second page may be used to provide complete responses.)

City	City of Maple Grove	
Contact Name	Derek Asche, Water Resources Engineer	
Telephone	763-494-6354	
Email	dasche@maplegrovern.gov	
Address	12800 Arbor Lakes Parkway, Maple Grove, MN, 55398	
Project Name	Ranchview Wetland Restoration	
	1. Is project in Member's CIP? (X) yes () no	Proposed CIP Year = 2020
	2. Has a feasibility study or an engineering report (circle one) been done for this project? (X)yes ()no	
		Amount
	Total Estimated Project Cost	\$2,500,000
	Estimated Commission Share (up to 25%, not to exceed \$250,000)	\$250,000
	Other Funding Sources (name them)	\$
	City of Maple Grove	\$2,250,000
	3. What is the scope of the project? The overall project goal is to restore the water regime and native vegetation to a 70-acre wetland which will result in wildlife habitat improvements and improved flood storage functions within the wetland. In addition, the City anticipates 36.5 acres of banked wetland credit.	
	4. What is the purpose of the project? What water resource(s) will be impacted by the project? The purpose is to restore lost groundwater recharge, flood and stormwater attenuation, vegetation diversity and integrity, natural habitat of wildlife, amphibians, and invertebrates and to provide improved aesthetic, recreational and educational opportunities within this wetland.	
	5. What is the anticipated improvement that would result from the project? (Include size of area treated and projected nutrient reduction.) 70 acres of restored wetland.	
	6. How does the project contribute to achieving the goals and programs of the Commission? Wetland restoration is listed as a strategy in the 2016 Watershed Restoration and Protection Study (WRAPS) for the Elm Creek Watershed. Further flood and stormwater attenuation will reduce downstream erosion which contributes to degraded water quality in Rush Creek. Meets ECWMC Goal D.2: Promote wetland enhancement or restoration of wetlands in the watershed.	
0/10	7. Does the project result from a regulatory mandate? (X) yes () no How? The Elm Creek WRAPS and the strategy's contained within, address waters not meeting state standards and which are still listed as impaired and for which a Total Maximum Daily Load study will still be performed, but facilitates a more cost-effective and comprehensive characterization of multiple water bodies and overall watershed health.	
0/10/20	8. Does the project address one or more TMDL requirements? (X) yes () no Which? This wetland restoration is less than 4,000 feet from Rush Creek which has TMDL's approved for DO, E.Coli, Fishes Bio-assessments, and Invertebrate Bio-assessments. Improved water quality discharges from this wetland will support improvements within Rush Creek.	
0/10/20	9. Does the project have an educational component? (X) yes () no Describe. This area is also part of master planning for future development including recreational trails adjacent to the restored wetland.	
0/10	10. Do all the LGUs responsible for sharing in the cost of the project agree to go forward with this project? (X) yes () no Identify the LGUs. City of Maple Grove	
10/20	11. Is the project in all the LGUs' CIPs? (X) yes () no	
1-34	(For TAC use)	
	12. Does project improve water quality? (0-10)	15. Promote groundwater recharge? (0-3)
	13. Prevent or correct erosion? (0-10)	16. Protect and enhance fish and wildlife habitat? (0-3)
	14. Prevent flooding? (0-5)	17. Improve or create water recreation facilities? (0-3)
TOTAL (poss 114)		Adopted April 11, 2012

Line 30

CIP-2018-CH-01

EXHIBIT A

**Elm Creek Watershed Management Commission
Capital Improvement Project Submittal**

*(This submittal will be rated on its completeness and adherence to the goals of the Commission.
A second page may be used to provide complete responses.)*

City	CHAMPLIN	
Contact Name	TODD TUOMINEN	
Telephone	763-923-7120	
Email	ttuominen@ci.champlin.mn.us	
Address	11955 Champlin Drive Champlin MN 55316	
Project Name	Mill Pond Rain Gardens	
	1. Is project in Member's CIP? (x) yes CIP-28	Proposed CIP Year = 2017- 2018
	2. Has a feasibility study or an engineering report (circle one) been done for this project? () yes () no	
		Amount
	Total Estimated Project Cost	\$400,000
	Estimated Commission Share (up to 25%, not to exceed \$250,000)	\$100,000
	Other Funding Sources (name them)	\$
		\$
	3. What is the scope of the project?	
	4. What is the purpose of the project? What water resource(s) will be impacted by the project?	
	5. What is the anticipated improvement that would result from the project? (Include size of area treated and projected nutrient reduction.)	
	6. How does the project contribute to achieving the goals and programs of the Commission?	
0/10	7. Does the project result from a regulatory mandate? () yes () no How?	
0/10/20	8. Does the project address one or more TMDL requirements? () yes () no Which?	
0/10/20	9. Does the project have an educational component? () yes () no Describe.	
0/10	10. Do all the LGUs responsible for sharing in the cost of the project agree to go forward with this project? () yes () no Identify the LGUs.	
10/20	11. Is the project in all the LGUs' CIPs? () yes () no	
1-34	(For TAC use) 12. Does project improve water quality? (0-10) 13. Prevent or correct erosion? (0-10) 14. Prevent flooding? (0-5)	15. Promote groundwater recharge? (0-3) 16. Protect and enhance fish and wildlife habitat? (0-3) 17. Improve or create water recreation facilities? (0-3)
TOTAL (poss 114)		Adopted April 11, 2012

LINE 34

EXHIBIT A

Elm Creek Watershed Management Commission
Capital Improvement Project Submittal

*(This submittal will be rated on its completeness and adherence to the goals of the Commission.
A second page may be used to provide complete responses.)*

City	Hennepin County	
Contact Name	Kirsten Barta	
Telephone	612-543-3373	
Email	Kirsten.barta@hennepin.us	
Address	701 4 th Ave S, Suite 700, Minneapolis, MN 55415	
Project Name	Rush Creek SWA Cost Share Projects/Ag BMP installations	
	1. Is project in Member's CIP? () yes () no	Proposed CIP Year =
	2. Has a feasibility study or an engineering report (circle one) been done for this project? (x) yes () no	
		Amount
	Total Estimated Project Cost	\$ 200,000
	Estimated Commission Share (up to 25%, not to exceed \$250,000)	\$20,000
	Other Funding Sources (name them) BWSR	\$142,110
	Hennepin County + Resident contribution	\$37,890
	3. What is the scope of the project? The Rush Creek SWA has identified a number of best practices and projects that landowners can install to improve water quality. Hennepin staff have reached out to residents about potential cost share projects sites and come up some projects with more expected. These funds would be used to help reduce the 25% landowner match for the cost share projects	
	4. What is the purpose of the project? What water resource(s) will be impacted by the project? The purpose of the project is to reduce pollutant loads to Rush Creek (North Fork) and subsequently Elm Creek. Both streams are impaired. Bacteria and nutrients are being especially targeted.	
	5. What is the anticipated improvement that would result from the project? (Include size of area treated and projected nutrient reduction.) Depends on which landowners agree to participate and which practices they allow on their property, but bacteria reductions in particular are expected as well as substantial TSS and P reductions.	
	6. How does the project contribute to achieving the goals and programs of the Commission? Contributes to goal B.4 (high priority areas to contribute financial and technical assistance to), Actions E and G (develop cost share projects/BMPs in high priority areas and pursue grant funding) and also goal F.2 (Foster implementation of priority TMDL goals by sharing cost and seeking grant funds).	
0/10	7. Does the project result from a regulatory mandate? () yes (X) no How?	
0/10/20	8. Does the project address one or more TMDL requirements? (x) yes () no Which? Nutrients, TSS and bacteria reductions in Rush Creek	
0/10/20	9. Does the project have an educational component? (x) yes () no Describe. Residents are being educated on the impacts of agricultural practices on the stream and several have asked staff to come and speak to various groups they belong to about it.	
0/10	10. Do all the LGUs responsible for sharing in the cost of the project agree to go forward with this project? (x) yes () no Identify the LGUs. Hennepin County	
10/20	11. Is the project in all the LGUs' CIPs? (X) yes () no	
1-34	(For TAC use) 12. Does project improve water quality? (0-10) 13. Prevent or correct erosion? (0-10) 14. Prevent flooding? (0-5)	15. Promote groundwater recharge? (0-3) 16. Protect and enhance fish and wildlife habitat? (0-3) 17. Improve or create water recreation facilities? (0-3)
TOTAL (poss 114)		Adopted April 11, 2012

EXHIBIT A

Elm Creek Watershed Management Commission
Capital Improvement Project Submittal

*(This submittal will be rated on its completeness and adherence to the goals of the Commission.
 A second page may be used to provide complete responses.)*

City	City of Medina		
Contact Name	Steve Scherer, Public Works Director; Dusty Finke, City Planner		
Telephone	763-473-8842; 763-473-8846		
Email	Steve.scherer@medinamn.gov ; dusty.finke@medinamn.gov		
Address	2052 County Road 24; Medina, MN 55340		
Project Name	Hickory Drive Stormwater Improvement		
	1. Is project in Member's CIP? (X) yes () no		Proposed CIP Year = 2019
	2. Has a feasibility study or engineering report (circle one) been done for this project? () yes (X) no		
			Amount
	Total Estimated Project Cost		307,920 \$ 225,000
	Estimated Commission Share (up to 25%, not to exceed \$250,000)		76,823 \$ 56,250
	Other Funding Sources (name them) – City will seek additional grant or clean water funding; City stormwater utility and assessments for remainder		\$168,750
			\$
	3. What is the scope of the project? Install stormwater pond for 8.3 acre drainage area (50% impervious). Stabilize approximately 300 linear feet of gully erosion. Install approximately 700 feet of curb and 600 feet of storm sewer to capture and direct stormwater to improvements.		
	4. What is the purpose of the project? What water resource(s) will be impacted by the project? The purpose of the project is to reduce nutrient loading to Elm Creek, which is adjacent to the project area. Drainage to Elm Creek is currently not treated.		
	5. What is the anticipated improvement that would result from the project? (Include size of area treated and projected nutrient reduction.) Jim Kujawa has estimated the phosphorus removal would be approximately 26.6 lbs/year. This removal is estimated to consist of an estimated 16 lbs/year for the pond plus 10.6 lbs/year phosphorus reduction for the gully/erosion improvements.		
	6. How does the project contribute to achieving the goals and programs of the Commission? The proposed project will reduce nutrient loading to Elm Creek, reduce runoff rate to Elm Creek, address implementation of the Elm Creek Watershed TMDL, and reduce erosion of the gully draining to Elm Creek.		
0/10	7. Does the project result from a regulatory mandate? () yes (X) no How? The stormwater improvement is not triggered by a permit requirement, but is consistent with TMDL implementation.		
0/10/20	8. Does the project address one or more TMDL requirements? (X) yes () no Which? Elm Creek Watershed TMDL		
0/10/20	9. Does the project have an educational component? (X) yes () no Describe. Information related to the benefits of the project will be included in newsletters and public meetings related to the project. The anticipated location of the pond does not lend itself well to educational signage, but the City will search for options.		
0/10	10. Do all the LGUs responsible for sharing in the cost of the project agree to go forward with this project? (X) yes () no Identify the LGUs. City of Medina		
10/20	11. Is the project in all the LGUs' CIPs? (X) yes () no		
1-34	(For TAC use)		
	12. Does project improve water quality? (0-10)	15. Promote groundwater recharge? (0-3)	
	13. Prevent or correct erosion? (0-10)	16. Protect and enhance fish and wildlife habitat? (0-3)	
	14. Prevent flooding? (0-5)	17. Improve or create water recreation facilities? (0-3)	
TOTAL (poss 114)		Adopted April 11, 2012	

LINE 39

EXHIBIT A

**Elm Creek Watershed Management Commission
Capital Improvement Project Submittal**

*(This submittal will be rated on its completeness and adherence to the goals of the Commission.
A second page may be used to provide complete responses.)*

City	Corcoran	
Contact Name	Kevin Mattson	
Telephone	763 400 7028	
Email	kmattson@ci.corcoran.mn.us	
Address	8200 County Road 116, Corcoran, MN 55340	
Project Name	Downtown Regional Stormwater Improvement Project	
	1. Is project in Member's CIP? (X) yes () no	Proposed CIP Year = 2019
	2. Has a feasibility study or an engineering report (circle one) been done for this project? (X) yes () no	
		Amount
	Total Estimated Project Cost	105,908 \$ 50,000
	Estimated Commission Share (up to 25%, not to exceed \$250,000)	26,500 \$10,000
	Other Funding Sources (name them) <i>City Budget, City in-kind</i>	\$ 40,000
		\$
	3. What is the scope of the project? <i>Cleanout regional stormwater pond and retrofit with filtration for enhanced water quality treatment.</i>	
	4. What is the purpose of the project? What water resource(s) will be impacted by the project? <i>South Fork of Rush Creek.</i>	
	5. What is the anticipated improvement that would result from the project? (Include size of area treated and projected nutrient reduction.) <i>Industrial Park treatment of +/- 25 acres.</i>	
	6. How does the project contribute to achieving the goals and programs of the Commission? <i>Improved water quality treatment of existing development.</i>	
0/10	7. Does the project result from a regulatory mandate? () yes (X) no How?	
0/10/20	8. Does the project address one or more TMDL requirements? (X) yes () no Which? <i>Nutrients</i>	
0/10/20	9. Does the project have an educational component? (X) yes () no Describe. <i>Educate business owners and public.</i>	
0/10	10. Do all the LGUs responsible for sharing in the cost of the project agree to go forward with this project? () yes () no Identify the LGUs. <i>Unknown at this time</i>	
10/20	11. Is the project in all the LGUs' CIPs? () yes (X) no	
1-34	(For TAC use)	
	12. Does project improve water quality? (0-10)	15. Promote groundwater recharge? (0-3)
	13. Prevent or correct erosion? (0-10)	16. Protect and enhance fish and wildlife habitat? (0-3)
	14. Prevent flooding? (0-5)	17. Improve or create water recreation facilities? (0-3)
TOTAL (poss 114)		Adopted April 11, 2012

EXHIBIT A

**Elm Creek Watershed Management Commission
Capital Improvement Project Submittal**

*(This submittal will be rated on its completeness and adherence to the goals of the Commission.
A second page may be used to provide complete responses.)*

City	CHAMPLIN	
Contact Name	TODD TUOMINEN	
Telephone	763-923-7120	
Email	ttuominen@ci.champlin.mn.us	
Address	11955 Champlin Drive, Champlin MN 55316	
Project Name	ELM CREEK CIRCLE-LOWELL POND RAINGARDEN IMPROVEMENT PROJECT	
	1. Is project in Member's CIP? (X) yes () no	Proposed CIP Year = 2019
	2. Has a feasibility study or an engineering report (circle one) been done for this project? (X) yes () no	
		Amount
	Total Estimated Project Cost	\$400,000
	Estimated Commission Share (up to 25%, not to exceed \$250,000)	\$100,000
	Other Funding Sources (name them)	\$300,000
		\$400,000
	3. What is the scope of the project? Construct Rain Garden and other BMP's for areas tributary to Mill Pond /Elm Creek (directly upstream-adjacent to the Mill Pond)	
	4. What is the purpose of the project? What water resource(s) will be impacted by the project? The proposed raingarden will improve water quality in the Mill Pond and Elm Creek.	
	5. What is the anticipated improvement that would result from the project? (Include size of area treated and projected nutrient reduction.) Elm Creek is impaired water with low dissolved oxygen, excess TSS AND Total P. Project will reduce sedimentation and total P going into Mill Pond. Project will help improve conditions for aquatic species habitat including sensitive species such as Blandings Turtle.	
	6. How does the project contribute to achieving the goals and programs of the Commission? Elm Creek is impaired water with low dissolved oxygen, high TSS and high Total P. The Improvements to the Mill Pond and Elm Creek is part of Champlin's WLA from the Elm Creek TMDL.	
0/10	7. Does the project result from a regulatory mandate? (X) yes () no How?	
0/10/20	8. Does the project address one or more TMDL requirements? (X) yes () no Which? TSS, TOTAL P, Increases DO.	
0/10/20	9. Does the project have an educational component? (X) yes () no Describe. The project will be included in Elm Creek Mill Pond Educational program, which will be coordinated with the Champlin Environmental Resources Commission and area schools.	
0/10	10. Do all the LGUs responsible for sharing in the cost of the project agree to go forward with this project? (X) yes () no Identify the LGUs. City of Champlin	
10/20	11. Is the project in all the LGUs' CIPs? (X) yes () no	
1-34	(For TAC use) 12. Does project improve water quality? (0-10) 13. Prevent or correct erosion? (0-10) 14. Prevent flooding? (0-5)	15. Promote groundwater recharge? (0-3) 16. Protect and enhance fish and wildlife habitat? (0-3) 17. Improve or create water recreation facilities? (0-3)
TOTAL (poss 114)		Adopted April 11, 2012

ELM CREEK WATERSHED MANAGEMENT COMMISSION
STATE OF MINNESOTA

RESOLUTION NO. 2019-02

ADOPTING A MINOR AMENDMENT TO THE THIRD GENERATION PLAN

WHEREAS, on October 14, 2015, the Elm Creek Watershed Management Commission (Commission) adopted the *Elm Creek Watershed Management Commission Third Generation Watershed Management Plan*, (hereinafter, “Plan”); and

WHEREAS, the Plan includes a Capital Improvement Program (CIP); and

WHEREAS, the Commission has proposed a Minor Plan Amendment that would add three projects to the CIP; and

WHEREAS, the Commission has also proposed that the Minor Plan Amendment would remove one project from the CIP; and

WHEREAS, the Commission has also proposed that the Minor Plan Amendment would shift the timing or funding of six projects currently listed on the CIP; and

WHEREAS, Table 4.5 of the Capital Improvement Program will be revised to reflect these changes; and

WHEREAS, the proposed Minor Plan Amendment has been reviewed in accordance with the requirements of Minnesota Statutes, Section 103B.231; and

WHEREAS, on May 1, 2019, the Minnesota Board of Water and Soil Resources did approve proceeding to adoption by a Minor Plan Amendment; and

WHEREAS, on May 8, 2019, after legal and written notice duly given, the Commission held a public informational meeting to explain the proposed revisions; and

WHEREAS, the Commission has determined that it would be reasonable and appropriate and in the public interest to adopt the Minor Plan Amendment;

NOW, THEREFORE, BE IT RESOLVED, by the Board of Commissioners of the Elm Creek Watershed Management Commission that:

1. The Minor Plan Amendment is approved and adopted contingent upon approval by the Hennepin County Board of Commissioners, said approval anticipated forthwith.

2. Commission staff is directed to notify appropriate parties of the Amendment to the Plan.

Adopted by the Board of Commissioners of the Elm Creek Watershed Management Commission this eighth day of May, 2019.

Doug Baines, Chair

ATTEST:

Judie Anderson, Recording Secretary

**STATE OF MINNESOTA
COUNTY OF HENNEPIN**

I, Judie A. Anderson, do hereby certify that I am the custodian of the minutes of all proceedings had and held by the Board of the Elm Creek Watershed Management Commission, that I have compared the above resolution with the original passed and adopted by the Board of said Commission at a regular meeting thereof held on the eighth day of May, 2019, at 11:30 a.m., that the above constitutes a true and correct copy thereof, that the same has not been amended or rescinded and is in full force and effect.

IN WITNESS WHEREOF, I have hereunto placed my hand and signature this eighth day of May, 2019.

(NO SEAL)

Judie A. Anderson
Recording Secretary

elm creek

Watershed Management Commission

ADMINISTRATIVE OFFICE
3235 Fernbrook Lane
Plymouth, MN 55447
PH: 763.553.1144
FAX: 763.553.9326
email: judie@jass.biz
www.elmcreekwatershed.org

TECHNICAL OFFICE
Hennepin County
Environment and Energy Dept
701 Fourth Ave S Suite 700
Minneapolis, MN 55415-1600
PH: 612.348-7338 • FAX: 612.348.8532
Email: James.Kujawa@hennepin.us

STAFF REPORT

May 1, 2019

- a. 2014-015 Rogers Drive Extension, Rogers.** This project involves improvements along Rogers Drive from Vevea Lane to Brockton Lane. The project is located east of I-94, south of the Cabela development. The total project area is 8.0 acres; proposed impervious surfaces total 5.6 acres. Site plans received July 1, 2014 meet the requirements of the Commission with the exception of the nutrient control. The Commission approved the site plan contingent upon the City deferring 4.6 lbs. of phosphorus for treatment in future ponding opportunities as the easterly corridor of Rogers Drive develops. 2.3 lbs. will be accounted for in the Kinghorn Spec. Building site plan, with 2.3 lbs. still outstanding. This item will remain on the report until the total deferral is accounted for.
- b. 2015-004 Kinghorn Outlot A, Rogers.** This is a 31-acre site located between the Clam and Fed Ex sites on the west side of Brockton Road and I-94. The proposed site will have two warehouse buildings with associated parking and loading facilities. In June 2015 the Commission approved this project with three conditions. Revisions have yet to meet the Commission's approval conditions. This project was extended by the City of Rogers earlier this year. It will remain active on the Staff Report.
- c. 2016-040 Kinghorn 4th Addition, Rogers.** This is a 13.7-acre parcel located in the northwest corner of the intersection of Brockton Lane and Rogers Drive. An industrial warehouse with 8.8 acres of new impervious area is proposed for the site. The plan includes the use of a NURP pond and a biofiltration basin to meet Commission requirements for rates, water quality and abstraction. The adjacent site is likely to be developed in the near future and some of the stormwater features were oversized to accommodate future development. In November 2016 the Commission approved the project conditioned on: 1) approval of only this phase; future phases will need additional review and approval; 2) final modifications to the hydrologic modeling; 3) additional details are provided for a proposed water re-use system; 4) an O&M Plan for the pond and biofiltration basin is completed and recorded on the final plat; 5) modification of the storm sewer system to maximize the area draining to the NURP pond; and 6) receipt and review of wetland-related documentation if wetlands are present. Condition #1 required no action, so has been met. Condition #2 has been met for the current design; however, any future design modifications will require additional review. Conditions #3-6 remain outstanding and are expected to be addressed during final design. Staff has discussed the project with the City and been in contact with the project engineer to receive an update, but no new information has been provided.
- d. 2016-047 Hy-Vee North Maple Grove.** The applicant is proposing to disturb 13 acres of a 20.4-acre site located at the northeast corner of Maple Grove Parkway and 99th Avenue for the purpose of constructing a grocery store, fuel station, convenience store and parking facilities. Staff sent preliminary review comments and requested revisions on December 14. In their findings dated January 10, 2017, Staff recommended approval of this project subject to (1) receipt, approval, and recordation of an Operations and Maintenance Plan for the pond and the iron-enhanced filtration system, (2) revisions for items relating to buffer requirements and erosion and sediment control as enumerated in the findings, and (3) receipt of a

RULE D - STORMWATER MANAGEMENT
RULE E - EROSION AND SEDIMENT CONTROL
RULE F - FLOODPLAIN ALTERATION

RULE G - WETLAND ALTERATION
RULE H - BRIDGE AND CULVERT CROSSINGS
RULE I - BUFFERS

Italics indicates new information

indicates enclosure

signed and dated final plan set. The Commission approved Staff's recommendations at their January 11, 2017 meeting with the additional requirement that the Commission receive and comment on a WCA impact notice. No new information has been received to date.

e. 2017-039 Rush Creek Apartments, Maple Grove. This project is located in the southwest quadrant of the intersection of Bass Lake Road (CSAH 10) and Troy Lane (CSAH 101). The project area is 8.2 acres in size and includes two phases of construction. Phase I is 236 apartment units located on 6.0 acres; Phase II is a future 76-unit apartment building located on 2.2 acres in Outlot C of this development. The Commission will review this project for conformance to Rules D, E and I. Findings with no recommendations dated November 15, 2017, were provided to the applicant and the City. The applicant requested and was granted an extension of the deadline per MN statute 15.99 to December 31, 2019. According to the agent for this project, a new layout and project application was submitted to Maple Grove in January 2019 and the project is still considered active by the City. *No new information has been received by Commission staff as of this update.*

f. 017-050W Ernie Mayers Wetland/floodplain violation, Corcoran. The City of Corcoran contacted the Commission in December 2017 concerning drainage complaints on Mayers' property. Multiple violations appear to have occurred on land owned by Mayers. Technical Evaluation Panels (TEPs) were held in December 2017 and January, May, and July 2018 to assess the nature and extent of the violations. A restoration order was issued to Mayers giving him until September 15, 2018 to respond or restore the violation areas to their original conditions. A request from Mayers' attorney for an extension to November 1, 2018 was granted by the DNR. This was further extended to November 1, 2019.

On October 30 an appeal to the restoration order was received by BWSR. BWSR issued an order of abeyance (stay) on the appeal until April 1, 2019. An application for replacement plan was received from Mayers on January 29, 2019. The application addresses the wetland fill (4:1 replacement request) and drain tile (disable existing tile) impacts, but requests additional time to submit an application to address the ditch (WCA jurisdiction) and floodplain (Commission jurisdiction) impacts. A TEP was held February 28, 2019 to address the replacement plan and provide guidance to the LGU. The City of Corcoran assumed WCA LGU responsibilities for this project March 1, 2019. Corcoran and BWSR have extended the decision process until May 31, 2019. *No new information has been received by Commission staff as of this update.*

g. 2018-005 Sundance Greens, Dayton. This site consists of seven parcels totaling 310 acres. Approximately half is the Sundance Golf course, the other half is agricultural land. The applicant is proposing a long-term, phased residential development with 665 residential units while maintaining a portion (9 of the 18 holes) of the golf course. Total new impervious area will be 71 acres. This project will be reviewed for Commission Rules D, F, and I. As part of the submittal for this project, the Sundance West and Sundance 2nd Addition phases will be reviewed for Rule E. As the site is phased in, the Commission will review each addition for consistency with Rules D, E, F and I. *This project was approved at the Commission's April 2019 meeting per Staff's findings dated April 10, 2019, and will be removed from the report.*

h. 2018-014 Refuge at Rush Creek (formerly Fehn Meadows 2nd Addition), Corcoran. The site is currently a 63-acre agricultural property located west of Cain Road on CR 117. The applicant proposes to subdivide the site into 14 residential lots. Public road and trail access will impact two wetland basins, totaling 16,537 SF of type 1 wetland impacts. Replacement at a 2:1 ratio in Bank Service Area (BSA) 7, Major Watershed 20 (Metro Mississippi), is proposed. The wetland replacement plan has been noticed per WCA requirements. The Commission approved this project with conditions at their August meeting: (1) Certification from MN BWSR that 0.7593 acres of wetland banking credits from account #1643 have been

transferred for use on this site or an escrow of \$90,000 is received from the applicant, (2) Preservation and buffer areas meet the Commission and City requirements for buffer and preservation, (3) \$4,000 per acre escrow is secured by the Commission for buffer/preservation compliance and 5-year monitoring plan, and (4) operation and maintenance plans for stormwater ponds are approved by the Commission and the City and recorded on the property title. *No new information has been received as of this update.*

i. **2018-020 North 101 Storage, Rogers.** This is an existing 3-acre lot in the northwest corner of Highway 101 and CR144. The current land use is a combination of mini-storage units and outdoor storage. The site is proposed for complete demolition and construction of seven new mini-storage buildings. At their July meeting the Commission approved Staff findings dated July 9, 2018, pending four items relating to abstraction requirements and the infiltration system. The applicant requested and was granted an extension to December 31, 2019, provided the review process with the City of Rogers does not expire.

j. **2018-021 113th Lane Extension/Brockton/101, Rogers.** The City is proposing to extend 113th Lane to provide a second access to the proposed second phase of the Laurel Creek development. The proposed road will extend from Brockton Lane to the development entrance. It will include a 4-lane divided roadway; an off-road trail north of 113th Lane; and construction of an intersection meeting County turn-lane requirements. The project will create 2.13 acres of new impervious surface. The project was conditionally approved at the July Commission meeting. The conditions include submittal of signed final plans and finalization of the wetland mitigation plan. The project has been delayed until 2019, so submittals to meet the conditions have not yet been received.

k. **2018-038 Vincent Woods, Rogers.** This 19 acre parcel was previously approved for eight apartment buildings by the Commission in 2015. The new site plans propose two apartment buildings with 4.25 acres of impervious areas. The project includes two stormwater ponds to provide water quality treatment and a filtration bench has been proposed in one of the ponds to meet the abstraction requirements which were not in place as of the last project approval. The Commission approved the project at their September 2018 meeting subject to submittal of minor revisions. Staff is working with the applicant on these items. Staff approval to begin grading prior to final approval was also provided. Staff recently received revised information to review for conformance with the minor revisions requested. Staff is following up on the current status of this project.

l. **2018-046 Graco Expansion, Rogers.** This project is the expansion of an existing building. The site is located in an area that has regional ponding provided for rate control purposes, but needs to account for water quality and abstraction requirements on site prior to discharging offsite as part of the improvements. The Commission granted conditional approval at their October meeting. Conditions of approval were to submit a SWPPP plan meeting requirements, clarify maintenance responsibilities for the *iron enhanced sand filter, and the City of Rogers to submit a letter stating their intentions to provide the water quality deficit in an upcoming project. Staff confirmed several minor plan revisions remain in conformance with the original approval. This item will remain on the Staff report until such time as the water quality deficit has been made up.*

m. **2019-001 Fernbrook View Apartments, Maple Grove.** This is a 4.85-acre rural residential lot located at the NE intersection of CSAH 81 at Fernbrook Lane. The applicant proposes to construct a 2-story, 42-unit apartment building. This project was reviewed and approved at the February 2019 Commission meeting with the following conditions: 1) The Commission recommends the applicant pursue utilizing water from the NURP pond for irrigation needs for this property; 2) Long term operation and maintenance on the stormwater basin must be addressed; 3) Mean average pond depth must meet the Commission standard; 4) Pond filter bench details must be provided. *This project has been placed on hold by the applicant for the time being.*

n. 2019-003 Rogers High School Tennis Courts., Rogers. The project area is just north of the east parking lot on the high school property. The developed site will include eight tennis courts, a reconstructed bituminous path, concrete sidewalk, and concrete viewing area between the courts. The disturbed area is approximately 2.91 acres and is currently occupied by athletic fields. Runoff drains north towards an existing onsite stormwater management pond. New impervious area will be 1.49 acres. Commission standards require reviews for Rules D and E. This project was approved by the Commission at their March 2019 meeting contingent upon receipt of final erosion control approvals by Staff. *All contingencies have been met; this project will be removed from the report.*

o. 2019-005 UBOL I94 MnDOT project. The I-94 UBOL project extends from the I-494/I-694 interchange in Maple Grove to just west of the TH 101 interchange in Rogers. The work will consist of resurfacing via an unbonded concrete overlay (UBOL), 9.6 miles of I-94 in both directions, including the ramps. Staff's review is for compliance with Commission Rules D, E and F. *This item was approved by the Commission at their March 2019 meeting contingent upon the final SWPPP being provided to the Commission when it is completed by the project contractor. This project will be removed from the report.*

p. 2019-007 Westin Ridge, Plymouth. This project is proposed on four individual parcels that total approximately 75 acres. Located at the SE intersection of CSAH 101 and 47, the entire site flows to a large onsite wetland that takes up approximately the southerly 1/3 of the properties. This wetland discharges easterly into a chain of wetlands that run for about a mile before reaching Elm Creek on the east side of Peony Lane. The site will be developed into 122 single family detached residential lots. The Commission's review is for the Commission's Third Generation Plan Rules D, E and I. *Staff recommends approval contingent upon compliance with Plymouth's (LGU) wetland replacement plan requirements.*

q. 2019-008 Residences on Elm Creek, Medina. The Commission received a request from the landowner and City of Medina to review a proposed driveway access on Hamel Road, adjacent to Elm Creek. The driveway work will disturb approximately 2,650 SF. With the proximity to Elm Creek, impacts to the floodplain/floodway were a concern to Staff. Because of the limited extent and nature of work (driveway access only), Commission staff will only review the floodplain issues at this time. Future development on this parcel will require further review by the Commission, depending on the degree of development. *The Commission approved this driveway grading and floodplain mitigation plan at their April 2019 meeting. They further recommended that the City of Medina implement the erosion controls and culvert recommendations in Staff's findings. This project will be removed from the report.*

r. 2019-009 Beacon Ridge, Plymouth. This project proposes to redevelop a low-density residential area with three large, wooded lots into a medium density residential area with 37 single family homes. Stormwater controls will be completed by the construction of one new wet detention pond with a filtration shelf, connection to existing storm water features via storm sewer, and direct runoff to the development to the North. The project will add approximately 3.91 new acres of impervious area. Despite the change in density, the developer has made efforts to preserve trees. A recommendation to approve the project is included in the meeting packet.

s. 2019-010 Hindu Temple Solar Array, Maple Grove. This project proposes the installation of a Solar Array for electrical power generation located at the Hindu Temple Site. The size of the array is small enough that it would typically not require review by the Commission. However, portions of the array are proposed to be located in the floodplain and floodway of Rush Creek, triggering review by the Commission. Staff has reviewed the project plans and is recommending Commission approval at the May meeting.

RULE D - STORMWATER MANAGEMENT
RULE E - EROSION AND SEDIMENT CONTROL
RULE F - FLOODPLAIN ALTERATION

RULE G - WETLAND ALTERATION
RULE H - BRIDGE AND CULVERT CROSSINGS
RULE I - BUFFERS

Italics indicates new information

indicates enclosure

t. 2019-011 Ravinia 11th Addition, Corcoran. *This project is a 5.6-acre, rural residential lot located on CR 101, approximately ¼ mile north of the four-corner intersection Maple Grove, Plymouth, Medina and Corcoran. Lennar Homes is proposing to subdivide the property into 14 single-family residential lots. This project triggers the Commission's review for rules D, E, G, and I. No recommendation is provided at this time because the project does not meet Rule I. If available, an update and recommendation will be provided to the Commission at their meeting.*

u. 2019-012 Brockton Lane North, Plymouth. *This project is a road improvement project which will convert the current rural road to an urban section with includes the addition of curb and gutter and storm sewer catch basins. Pre and post construction water conveyance will remain the same. Staff will review for erosion and sediment control and stormwater conveyance. Staff has not reviewed this project in time to provide findings and a recommendation in this update. If available, Staff's finding and recommendations will be provided to the Commission at their meeting.*

v. 2019-013 Boston Scientific Parking Lot Expansion, Maple Grove. *Boston Scientific is proposing to reconfigure a portion of their parking lot and add additional parking stalls, thereby increasing their impervious footprint by 1.18 acres. This will trigger rules D and E. A complete project was not submitted in time to provide Staff's review and recommendations in this update. If available Staff's finding and recommendations will be provided to the Commission at their meeting.*

FINAL RECORDINGS OR OTHER DOCUMENTATION ARE DUE ON THE FOLLOWING PROJECTS: *(Staff reached out to the cities for an update on these projects on February 5, 2019.)*

ah. 2013-046 Woods of Medina, Medina. *In January 2015 the Commission approved this project with two conditions. This project remained active throughout this period with the final plat recently approved by the City. No significant changes were made to the original plans. The two conditions were 1) compliance to the WCA requirements and 2) final approval and recording of the O & M plans. The WCA condition has been met with only the O&M plan condition remaining. On February 5, 2019 Dusty Finke reported that the City is awaiting final plat application for this project.*

ai. 2015-030 Kiddiegarten Child Care Center, Maple Grove. *Approved December 9, 2015. If the City does not take over the operation and maintenance of the underground system and the sump catch basins, an O&M agreement for the underground trench/pond system must be approved by the Commission and the City and recorded with the title. On February 5, 2019 Derek Asche contacted the owner requesting a copy of the recorded maintenance agreement.*

aj. 2016-002 The Markets at Rush Creek, Maple Grove. *This is a proposal to develop 40 acres of a 123-acre PUD located in the southwest quadrant of the intersection of CSAH 101 and CSAH 10. In 2016 the Commission granted Staff authority to administratively approve the project and report any updates. Updated plans with some minor layout revisions were reviewed by Staff and administratively approved on July 24, 2018, contingent upon the Operation and Maintenance Plan approval and recordings. On February 5, 2019 Derek Asche contacted the project manager requesting a copy of the recorded maintenance agreement.*

ak. 2016-005W Ravinia Wetland Replacement Plan, Corcoran. *In December 2016 the Commission approved Staff's recommendations on this wetland replacement plan. Final wetland impacts are 1.22 acres. Wetland credits created on site will be 4.01 acres. Excess credits of 0.75 acres are proposed to be used on Lennar's Laurel Creek development in Rogers (2017-014). All approval contingencies have been met and construction completed.. Vegetation planting and management took place throughout 2017. Barr Engineering is providing monitoring to ensure the replacement meets the performance standards of the approved plans. Their first annual report was submitted to the US Army Corps of Engineers on February 7, 2019.*

RULE D - STORMWATER MANAGEMENT
RULE E - EROSION AND SEDIMENT CONTROL
RULE F - FLOODPLAIN ALTERATION

RULE G - WETLAND ALTERATION
RULE H - BRIDGE AND CULVERT CROSSINGS
RULE I - BUFFERS

Italics indicates new information

indicates enclosure

al. 2017-014 Laurel Creek, Rogers. In June 2017 the Commission approved this project with four conditions. All contingency items have been provided with the exception of the O&M agreement which is being negotiated by the City as to whether the City or the HOA will be responsible for the operation and maintenance of the stormwater management facility. On August 31, 2017, Andrew Simmons responded that the O&M agreement is still being negotiated.

am. 2017-017 Mary Queen of Peace Catholic Church, Rogers. In June 2017 the Commission granted Staff approval authority pending satisfactory compliance with Staff's findings. All items from the findings have been completed with the exception of the O&M agreement for the stormwater facilities. On June 7, 2018 Andrew Simmons reported that the Church is in the process of revising the stormwater management plan for the site to include water reuse instead of biofiltration pond. The Commission should receive a revised application in the near future. There are also underlying utility easement issues with this project that are holding up the final recording of the plat against which to record the maintenance agreement. *On February 5, 2019 Andrew Simmons reported that the final plat has yet to be recorded.*

an. 2017-029 Brayburn Trails, Dayton. At their August 2017 meeting the Commission approved Staff's findings dated August 2, 2017 with five conditions. All of the conditions have been met with the submission of revised plans, with the exception of the final recordings of the O&M agreements and easements. On March 7, 2018, the City reported: final plat approval has not been granted, easements will be recorded as plats are approved. Ponds will be maintained by the City of Dayton. An agreement, and additional easement, will be required for a water re-use system within one of the ponds (between the City and HOA). This system is not part of the first addition – the timing of said improvements/ agreement is unknown. Construction was expected to start in 2018.

On February 7, 2019, Jason Quisberg provided the following information: The 1st Addition was scaled back from what was proposed; associated construction activity is significantly completed. Extension of trunk utilities through Sundance Golf Course are complete. The proposed 2nd Addition is under review. Improvements to 117th Avenue (East French Lake Road to Fernbrook Lane) will be part of the work done with the 2nd Addition. Construction is anticipated to start this spring. Pond easements are being recorded with the platting process for each addition (those [that are] part of the 1st Addition are in place). The water re-use system is not part of the 2nd Addition (will be with future addition).

ao. 2018-018 Summers Edge Phase III, Plymouth. The Commission approved Staff's recommendations at their June 13, 2018 meeting, subject to receipt of final easements over the wetland buffers within 90 days of final platting in a format acceptable to the Commission. *On February 5, 2019 Ben Scharenbroich provided an unsigned copy of the final plat.*

ap. 2018-026 Windrose, Maple Grove. The Commission approved Staff's finding and recommendations dated July 20, 2018. Final plan approval is contingent upon verification of the wetland approvals by the City of Maple Grove and the approval and recording of the operation and maintenance plan on the filter basins. *On February 5, 2019 Derek Asche reported that the City will receive the agreement for the filter basins with the grading permit application.*

aq. 2018-028 Tricare Third Addition, Maple Grove In their findings dated August 7, 2018, Staff recommended approval contingent on approval and recordation of the O&M plan on the filter basins. The Commission further recommended that the City consider an oil/debris type of separator in the parking lot manhole. *Derek Asche contacted the project manager on February 5, 2019. It is a condition of the grading permit that the maintenance agreement is provided.*

ar. 2018-044 OSI Phase II, Medina. Staff findings dated October 9, 2018 were approved by the Commission at their October meeting contingent upon receipt of an approved stormwater system operation and maintenance plan being recorded on the property title. *On February 5, 2019 Dusty Finke reported that the City is awaiting final plat application for this project.*

as. 2018-048 Faithbrook Church, Phase 2, Dayton. This is an application for review of an expansion of an existing church located northeast of the intersection of Fernbrook Lane and Elm Creek Road. The Commission approved this

project at their November meeting conditioned upon receipt of a SWPPP meeting NPDES requirements and the City of Dayton accepting maintenance responsibility or recording a modified O&M plan for the stormwater features on the site in a form acceptable to the Commission. On February 7, 2019, Jason Quisberg reported that this project has gone idle; it is believed to be due to funding needs of the applicant. It is expected activity will resume this spring, with potential construction this summer.

at. 2019-002 Parkside Villas, Champlin. This is two adjacent rural parcels totaling 13.9 acres that are proposed to be split into 56 single-family residential lots. It is located on the east side of Goose Lake Road just south of its intersection with Elm Road (CR 202). The review is for compliance with Commission's Rules D and E. At their February 2019 meeting the Commissioners approved Staff's findings dated January 29, 2019, contingent on 1) a long term O&M agreement on the stormwater basin and irrigation system being provided and recorded on the property title and 2) the applicant working with the City and Three Rivers Park District to safely outlet the pond water below the trail system adjacent to the property line.

LOCAL PLANS

One local plan remains to be approved by the Commission. **Rogers'** 2040 Comprehensive Plan was received by the Commission on January 2, 2019. Staff comments have been provided to the City.

FEMA FLOODPLAIN MAPPING

Hydrologic modeling work has continued through the month of April. Staff is running about 2-3 weeks behind on providing a model submittal to the Minnesota DNR. This submittal was originally anticipated to be complete by the end of April. This does not put the remainder of the project behind, as there was some overlap between review of hydrologic modeling and completion of hydraulic modeling. When the hydrologic report and submittal are made (estimated date of May 17), Staff will present results at the following meeting (June).

RUSH CREEK SWA IMPLEMENTATION

The Hennepin County Board signed the grant agreement on March 12, 2019. *Staff are making site visits and completing designs on five manure management projects. Two are in Corcoran, and three are in Rogers. Additional site visits are pending for seven landowners..*

BUFFER REVIEW

Buffer review is underway for Corcoran, Rogers, and Medina. Residents with **potential violations** and those residents that are **receiving spot checks** (unrelated to violations) will be notified by US Mail. Those residents who **DO NOT** have any violation or will not be getting a spot check will **NOT** be notified in any way. Hennepin staff will work with those residents needing assistance to get into compliance.

RULE D - STORMWATER MANAGEMENT
RULE E - EROSION AND SEDIMENT CONTROL
RULE F - FLOODPLAIN ALTERATION

RULE G - WETLAND ALTERATION
RULE H - BRIDGE AND CULVERT CROSSINGS
RULE I - BUFFERS

Italics indicates new information

indicates enclosure

elm creek

Watershed Management Commission

item 05a11p

ADMINISTRATIVE OFFICE
3235 Fernbrook Lane
Plymouth, MN 55447
PH: 763.553.1144
E-mail: judie@jass.biz

TECHNICAL OFFICE
Hennepin County Public Works
Department of Environment and Energy
701 Fourth Ave. South, Suite 700
Minneapolis, MN 55415
PH: 612.348.7338
E-mail: james.kujawa@hennepin.us

Westin Ridge Plymouth, Project #2019-007

Project Overview: This project is proposed on four individual parcels that total approximately 75 acres. It is located at the SE intersection of CSAH 101 and 47 in Plymouth. The entire site flows to a large onsite wetland that takes up approximately the southerly 1/3 of the properties. This wetland discharges easterly into a chain of wetlands that run for about a mile before reaching Elm Creek on the east side of Peony Lane. The site will be developed into 122 single family detached residential lots. The Commission's review will for the Commissions 3rd Generation STWMP Rules and Standards on Stormwater Management (Rule D), Erosion Control (Rule E), Wetland Alteration (Rule G) and Wetland Buffers (Rule I)

Applicant: West Plymouth Development Inc., Nate Herman, 10850 Old County Road 15, Suite 200, Plymouth, MN 55441. Phone: 952-546-5070. Email: nate@gonyecompany.com.

Agent/Engineer: Sathre-Bergquist, Inc. Tom Welshinger, 150 South Broadway, Wayzata, MN 55391. Phone: 952-476-6000. Email: twelshinger@sathre.com

Exhibits:

- 1) ECWMC Request for Plan Review and \$2,750 Project Review fee received March 15, 2019.
- 2) Preliminary Site Plans, Westin Ridge dated October 18, 2018. Most recent revision dated February 14, 2019.
 - a. Sheet SP, Preliminary Site Plan
 - b. Sheet AA, ALTA Survey
 - c. Sheet PP, Preliminary Plat
 - d. Sheets SW1 to SW4, Preliminary Sanitary Sewer and Watermain Plan,
 - e. Sheets SS1 and SS2, Preliminary Storm Sewer Plan
 - f. Sheet GP1 to GP4, Preliminary Grading Plan
 - g. Sheet EC1 to EC3, Preliminary Erosion Control Plan
 - h. Sheet TS1 to TS8, Tree Survey.
- 3) Westin Ridge 1st Addition Final Storm Sewer Plans sheets 14 to 18, dated March 26, 2019.
- 4) Westin Ridge 1st Addition Final Erosion Control Plans, sheets 23 to 25 of 30 dated March 26, 2019.
- 5) Westin Ridge Stormwater Management Plan by Advanced Engineering and Environmental Services dated February 14, 2019.

- 6) Preliminary Geotechnical Exploration Report by Haugo GeoTechnical Services dated July 8, 2013. Sketch and test pit logs dated December 20, 2018
- 7) ALTA Land Title Survey, 2 of 2 sheets, dated September 24, 2018.
- 8) Preliminary Plat, 2 of 2 sheets, last revision date February 6, 2019.

Findings:

- 1) A complete application was received March 15, 2019. The initial 60-day decision period per MN15.99 expires May 14, 2019.
- 2) Current land use consists of 47.6 acres rural residential lots and open space. These areas drain into a large wetland complex in the southerly 27 acres of the site.
- 3) Proposed land use is 122 single family residential lots and its required infrastructure.
- 4) The change in the land use and zoning triggers compliance to the Commissions Stormwater Management (Rule D), Erosion Control (Rule E), Floodplain (Rule F), Wetland Alteration (Rule G) and Wetland Buffer (Rule I) rules.
- 5) The large wetland complex FEMA zone A floodplain in the southerly 1/3 of this site was modeled during other project developments in this vicinity. The base flood elevation was modeled at 947.6. The Westin Ridge site plans label the BFE high-water elevation at 948.0. This is acceptable for our review.
- 6) The City of Plymouth is the Local Government Unit (LGU) in charge of administering the wetland conservation act within their jurisdiction. Wetlands impacts, and replacement plans must meet the City of Plymouth standards.
- 7) Phasing of the development was not provided with the plan materials. This review and decision are good for a one-year timeline. Changes to this plan or any subsequent subdivision on this site must be reviewed by the ECWMC.

Stormwater Management

General

- 8) There will be two wet detention ponds (NURP) and four filtration basins constructed to treat and control the water from this site before it discharges into the existing onsite wetland complex.
 - a. All ponds and filter basins are covered by D & U Easements.
 - b. All pond and filter basin outlet control structures have skimming devices
 - c. The bottom of the filtration media is proposed at 3.0 feet or more above the groundwater elevations
 - d. Drawdown on the filtration pond will be less than 48 hours (12 to 41 actual).
 - e. Pretreatment using nine (9) sump manholes above the inlet pipes to filter basins 3S and 3SE are provided. They are structures A7, A4, A2, F2, F3,E3, H2, E5 and E7.

Abstraction/Filtration

- 9) There will be 13.44 acres of new impervious areas from this development.
 - a. Soils on site will not infiltrate to the extent practicable in a 48-hour period
 - b. Filtration, in lieu of infiltration will be provided per the Commissions standards.
 - c. 53,666 cubic feet (1.232 ac. ft.) of abstraction/filtration volume is required for 13.44 acres of new impervious area per the Commission's abstraction standard.
 - d. Actual filtration provided in the three filter basins and one pond bench will be 61,552 cubic feet. This will meet the Commission standard.

Water Quality

- 10) Pre and post development were modeled using P8, routing the developed conditions through the storm sewer infrastructure.
- 11) Existing TSS/TP loads are 6,451 and 20.6 lbs/year respectively. Proposed are 1,183 and 15.0 lbs/year. This meets the Commission standard for water quality.

Water Quantity

- 12) This site has approximately 300 acres of off-site water routed through it.
- 13) Water quantity was analyzed looking at; a) the overall discharge before and after development from the large wetland complex on this property.
- 14) Pre vs post-development rate controls meet the Commission standard. They are as follows;

Rate Control Summary

	2-yr (cfs)	10-yr (cfs)	100-yr (cfs)
Pre-Development Rates	60.1	139.9	317.2
Post-Development Rates	41.3	111.6	268.1

Water Quality Summary

Condition (based on 47.6 acres)	TP Load (lbs/yr)	TSS Load (lbs/yr)	Abstraction (cu. ft.)	Filtration (cu. ft.)	Annual Volume* (ac. ft.)
Pre-development (baseline)	20.6	6,581	N/A	N/A	34.5*
Post-development without BMPs	38.8	12,092		53,666	47.6*
Post-development with BMPs	15.0	1,183		61,552	11.9*
Net Change	-5.6	-5,268	N/A	-7,886	N/A

*Staff estimates

Erosion Control

- 15) Erosion controls comply with the Commission standard.

Wetland Buffer Plans

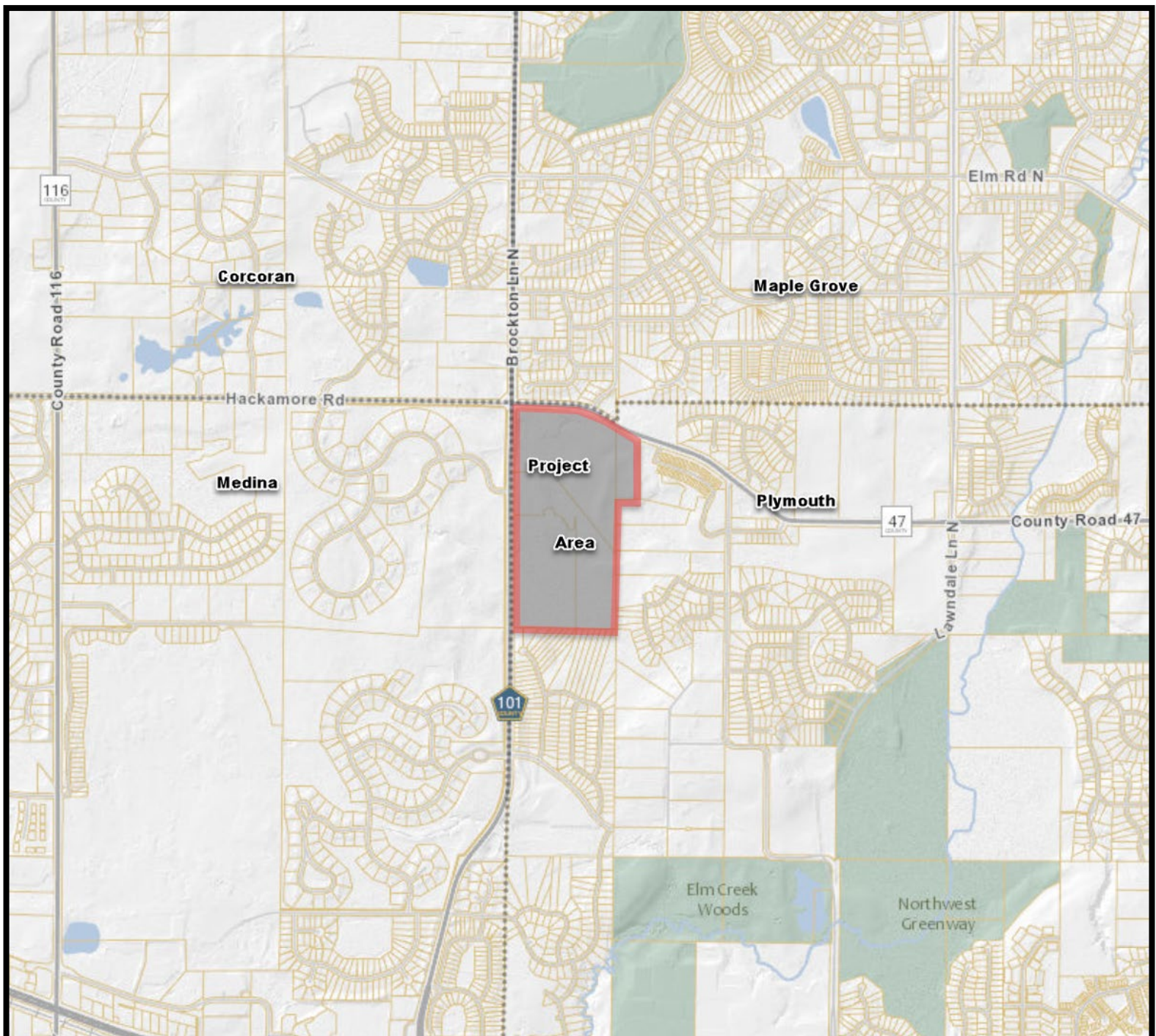
- 16) Wetland buffer will meet the Commission's 10' minimum/25' average buffer requirements. Monumentation adheres to the Commission standards.

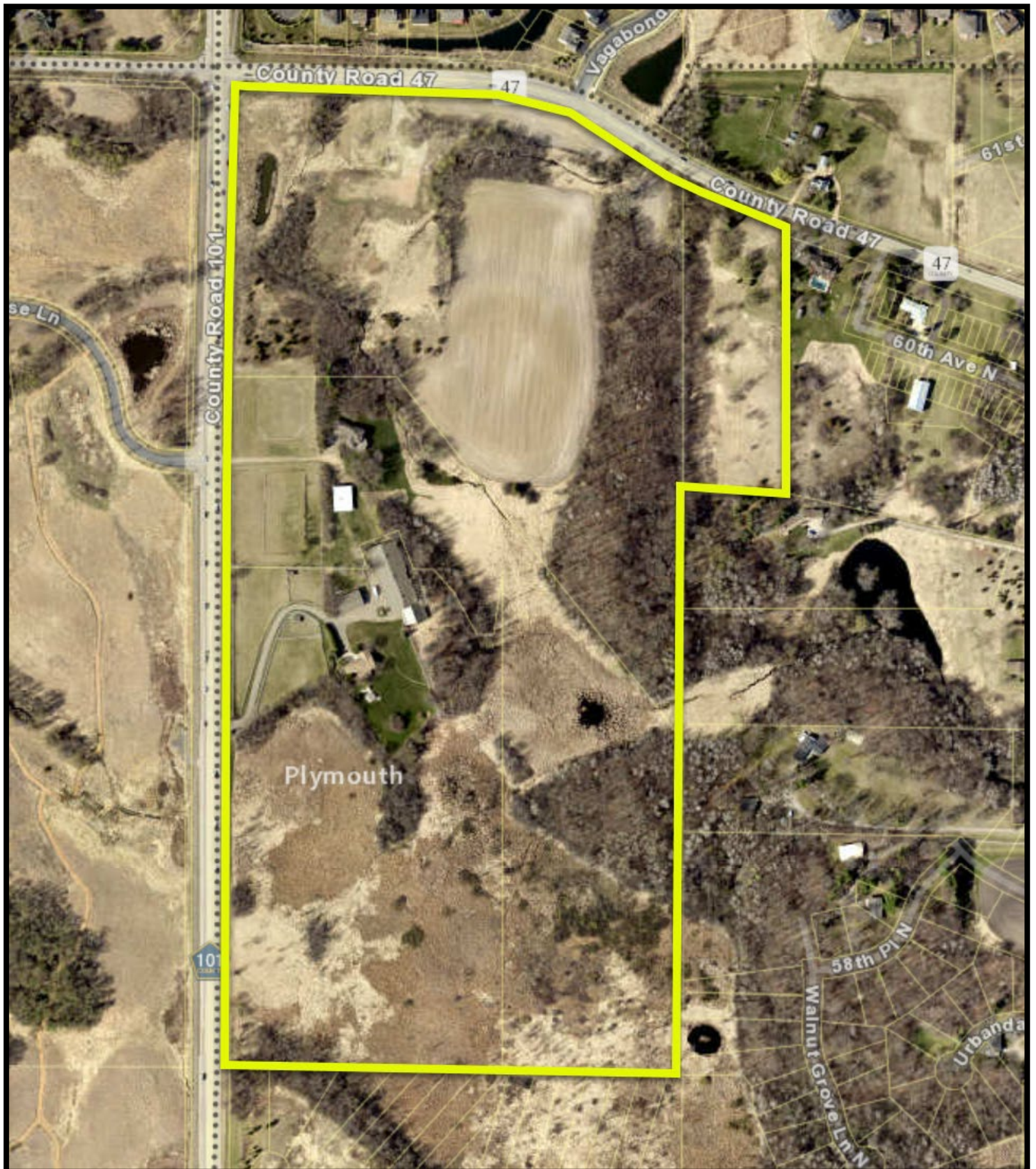
Recommendation: Approval contingent upon;

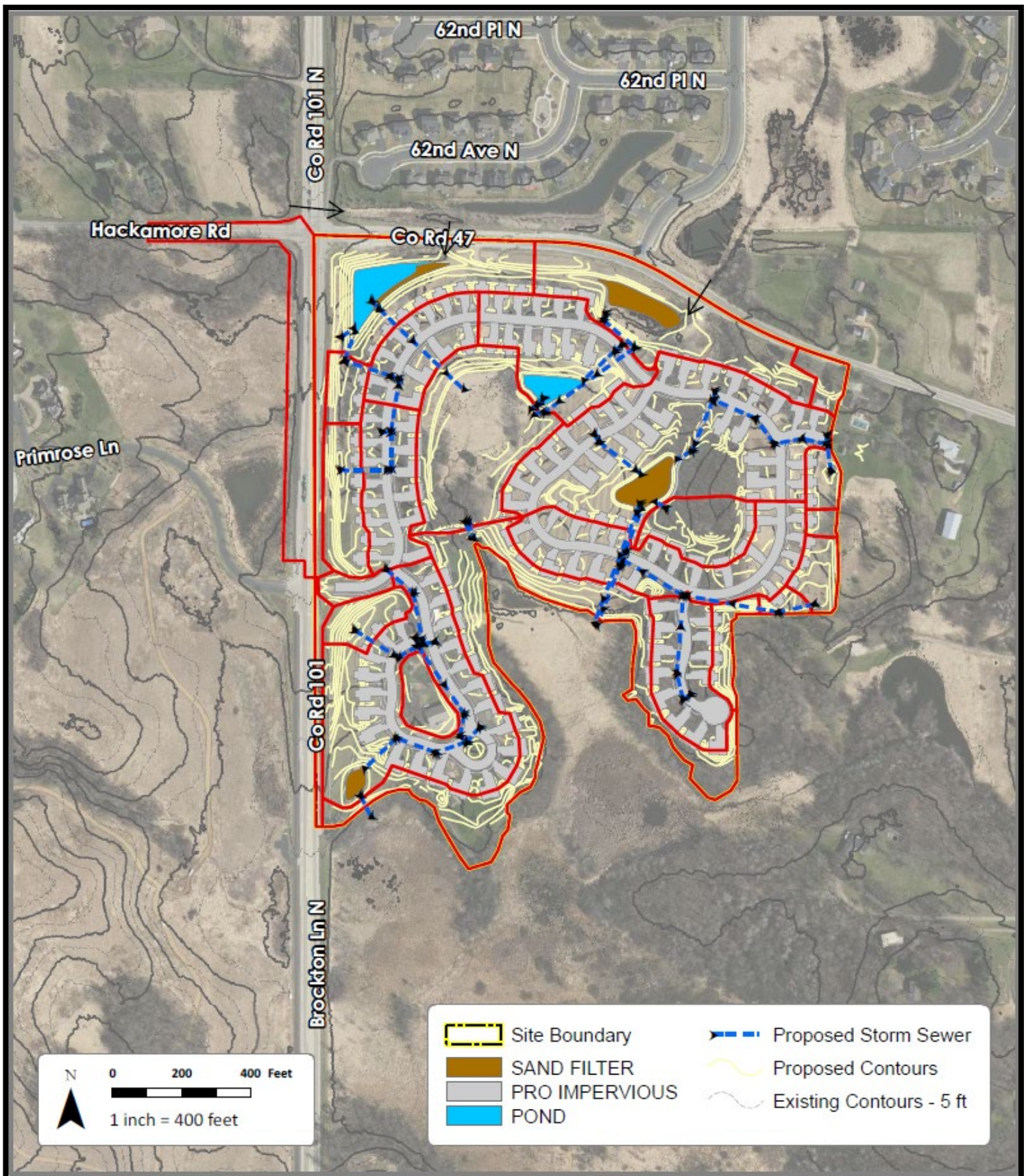
- Compliance with Plymouth's (LGU) wetland replacement plan requirements.

Hennepin County
Department of Environment and Energy
Advisor to the Commission

April 26, 2019







elm creek

Watershed Management Commission

ADMINISTRATIVE OFFICE

3235 Fernbrook Lane
Plymouth, MN 55447
PH: 763.553.1144
FAX: 763.553.9326
Email: judie@jass.biz

TECHNICAL OFFICE

Hennepin County DES
701 Fourth Street South, Suite 700
Minneapolis, MN 55415-1600
PH: 612.348-7338
FAX: 612.348.8532
Email: james.kujawa@co.hennepin.mn.us

Beacon Ridge *Plymouth, MN* *Project #2019-009*

Project Overview: WEG – Beacon Ridge, LLC is working with Alliant Engineering, Inc. to design a residential development on approximately 14.6 acres within the Elm Creek watershed west of Dunkirk Lane N., south of the existing Aspen Hollow development and east of the Elm Creek flood plain. The project will include construction of 37 new single family homes. Storm water controls will be completed by the construction of one new wet detention pond with a filtration shelf, connection to existing storm water features via storm sewer, and direct runoff to the development to the North. The project will add approximately 3.91 new acres of impervious area. Currently, the site is home to three single-family homes, associated driveways and outbuildings. Land cover is primarily wooded slopes with one wetland. NRCS Soil Survey data indicates that the site is predominantly Lester loam, Cordova loam, Glencoe clay loam, Nessel loam, Angus loam, Hamel, and Dundas-Cordova complex which are mainly Type C soils. General existing drainage patterns will be maintained under proposed conditions though there is a reduction in the areas draining off-site to both Dunkirk Lane N. and Aspen Hollow.

Applicant: Watermark Equity Group, 206 N. Main Street, Wheaton, IL 60187

Engineer/Agent: Seth Loken, Alliant Engineering, Inc., 733 Marquette Avenue, Suite 700, Minneapolis, MN 55402

Exhibits:

- 1) ECWMC Request for Plan Review and Approval and fee of \$780 were received on March 22, 2019.
- 2) Storm Water Management Hydrologic and Hydraulic Study, prepared by Alliant Engineering, Inc., dated February 22, 2019.
 - a. Project background
 - b. Storm water requirements summary
 - c. Drainage and storm water management design summaries
 - d. HydroCAD output for existing and proposed conditions

- e. MIDS Calculator output for existing and proposed conditions
- f. USGS Web Soil Survey Report
- 3) Beacon Ridge Final Plat Application - Response to City Preliminary Review Comments – Construction Documents Submittal Phase 1 and Mass Grading Plans, dated March 22, 2019
- 4) Beacon Ridge Phase 1 Construction Documents, signed March 22, 2019
 - a. Grading and drainage plan
 - b. Pond and filtration trench plan and profile
 - c. Erosion and sediment control plan
 - d. Storm sewer plan and profiles
- 5) Beacon Ridge Mass Grading, signed March 22, 2019
 - a. Erosion and sediment control notes and details
- 6) Beacon Ridge Phase 1 Project Specifications, dated February 22, 2019
- 7) Beacon Ridge Final Plat, not dated
- 8) Beacon Ridge Temporary Drainage and Utility Easement, dated March 22, 2019
- 9) Beacon Ridge Trail Easement, dated March 22, 2019

Findings:

Storm water Management

- 1) The entire site is approximately 14.5 acres with approximately 12 acres disturbed. The undisturbed portions of the site consist of the wetland, an internal tree preservation zone and tree preservation areas around the majority of the perimeter of the site. The impervious area will increase from approximately 0.58 acres (4% of site) to approximately 4.49 acres (31% of the site).
- 2) NRCS Soil Survey data as well as soil boring investigations indicate that the site is predominantly Type C and D soils. All soils were modeled as Type D in HydroCAD.
- 3) Storm water will be managed on the site through one wet detention ponds with a filtration beach. Iron filings will be included in the sand section of the filtration to aid in phosphorous treatment.
- 4) Rate controls meet the Commission's standards as the peak runoff rates leaving the site are all less than peak rates for existing conditions. Note that, while there is a slight increase in peak outflow to the south swale during the 10-yr rainfall event, the total peak discharge to Elm Creek is lower for the proposed conditions than existing conditions. Peak flows offsite to Elm Creek (total), south swale (contributes to Elm Creek total), and Dunkirk Lane N. (does not contribute to Elm Creek) are as follows:

Site Outflow Location	2-yr Peak Flow (cfs)			10-yr Peak Flow (cfs)			100-yr Peak Flow (cfs)		
	Existing	Proposed	Diff.	Existing	Proposed	Diff.	Existing	Proposed	Diff.
Elm Creek (total)	19	7	-12	25	14	-11	82	54	-28
South Swale	8	2	-6	11	12	+1	37	34	-3
Dunkirk Ln. N	5	2	-3	7	2	-5	21	6	-15

- 5) Water quality standards will be met as total TP and TSS loads will be reduced.

Condition	TP Load (lbs./yr)*	TSS Load (lbs./yr)*
Pre-development Load	2.898	526.4
Post-development Load	10.709	1945.37
Post-development Discharge	2.813	200.5
Post-development Load Reduction	7.896	1744.87
Net Change from Pre-development	-0.085	-325.9

*Value using MIDS calculator

Wetland and Stream Buffer

- 6) A 30-ft wide buffer (average) around the onsite wetland will be maintained, and buffer markers are included in the plan set.

Erosion and Sediment Control

- 7) An erosion control plan meets ECWMC standards.

Wetland Impacts

- 8) There are no wetland impacts to this site.

Floodplain Impacts

- 9) There are no floodplain impacts to this site.

Interim Conditions (1st Addition)

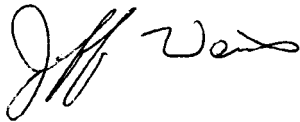
- 10) The Beacon Ridge development will be constructed in two phases, however the mass grading will be completed for the entire site at the outset. The retention pond and filtration will be constructed as part of phase 1. A temporary sediment basin will be constructed as necessary in the phase 2 graded area (Outlot A).

Beacon Ridge (2019-009)
May 2, 2019
Page 4

Recommendation:

Approval with the following conditions:

- 1) Confirmation that the City will maintain the pond/infiltration trench. If the City will not maintain the pond, then an O&M plan must be recorded with the plat.



Jeff Weiss, P.E.
Barr Engineering Company
Advisor to the Commission

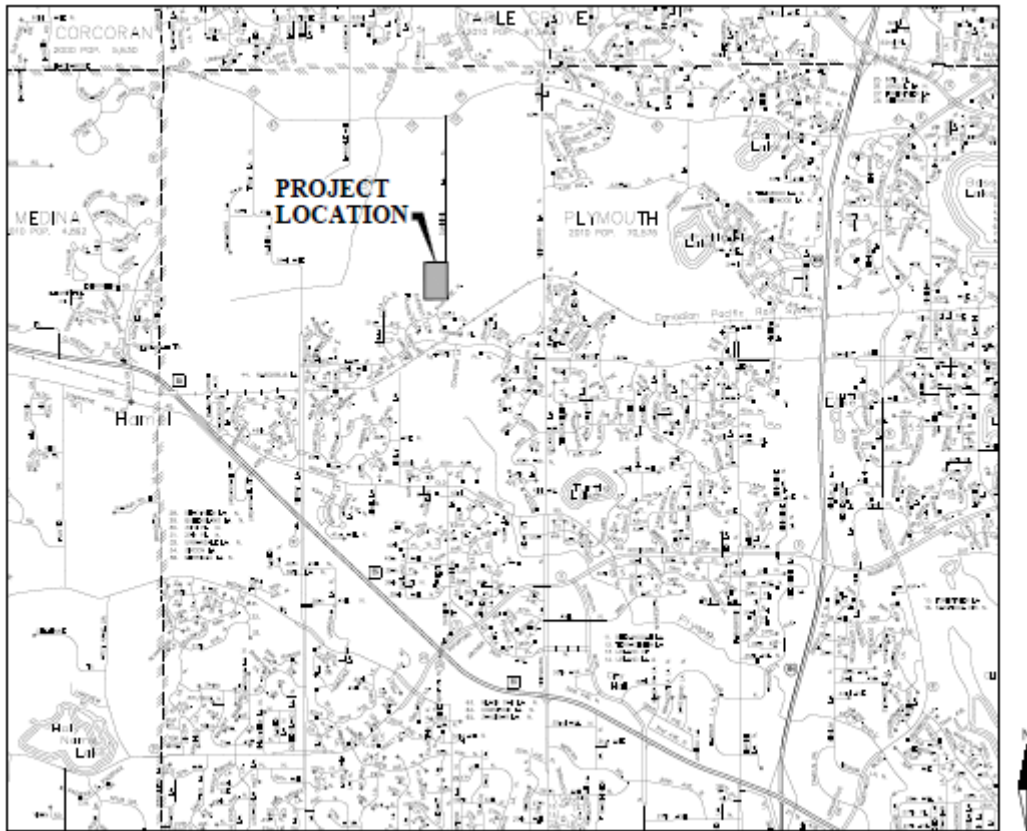
May 2, 2019
Date

Beacon Ridge (2019-009)

May 2, 2019

Page 5

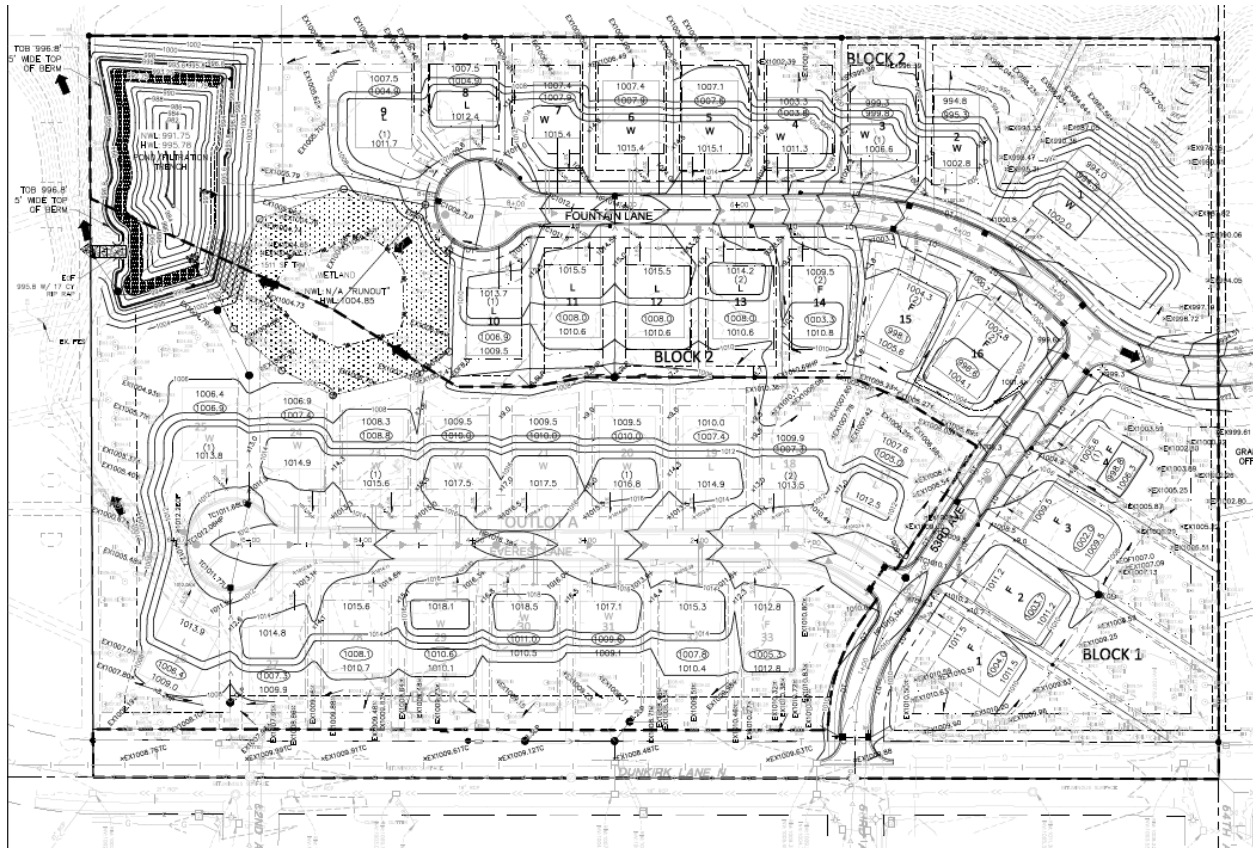
Site Location Map



Beacon Ridge (2019-009)

May 2, 2019

Page 6

Site Mass Grading and Drainage Plan

elm creek

Watershed Management Commission

item 05a11s

ADMINISTRATIVE OFFICE
3235 Fernbrook Lane
Plymouth, MN 55447
PH: 763.553.1144
E-mail: judie@jass.biz

TECHNICAL OFFICE
Hennepin County Public Works
Department of Environment and Energy
701 Fourth Ave. South, Suite 700
Minneapolis, MN 55415
PH: 612.596.1171
E-mail: jason.swenson@hennepin.us

Hindu Temple Solar Array **Maple Grove, Project #2019-010**

Project Overview: This project is a proposed installation of a Solar Array for generation of electricity adjacent to the existing Hindu Temple located in the City of Maple Grove. The applicant proposes installing 7 rows of solar panels to the northeast of the existing structures on the parcel, located in the floodplain of Rush Creek. The facility is located to the east of Troy Lane, and South of I-94. The total disturbance proposed is 0.62 acres, with 0.18 acres of new impervious surfaces being added. Previous reviews of the site include the most recent work for residential units in 2017 (ECWMC Permit #2017-021). The project triggers the Commissions review requirements for Rule D, Stormwater Management, Rule E, Erosion and Sediment Controls, and Rule F, Floodplain Alterations.

Applicant: Hindu Temple of Minnesota, Attn. Raj Balasubramanian, 10530 Troy Lane North, Maple Grove, MN 55311. Phone: 651-368-0533. Email: chairman@hsmn.org

Agent: Sambatek, Attn. Michelle Caron, P.E., 12800 Whitewater Drive, Suite 300, Minnetonka, MN 55343. Phone: 763-746-1645. Email: mcaron@sambatek.com

Exhibits:

- 1) ECWMC Request for Plan Review and Approval application, received March 26, 2019, with fees of \$200.
- 2) Preliminary Site Development Plans, Dated 3/11/2019
 - a. Sheet C1.01, Title Sheet
 - b. Sheet C3.01, Civil Site Plans
 - c. Sheet C4.01, Grading and Erosion Control Plan
 - d. Sheet C9.01, Details
- 3) Wetland Conservation Act (WCA) Notice of Decision on Wetland Boundaries, Dated 11/9/2018
- 4) Hindu Temple Floodway Summary Memo, dated 3/21/2019, prepared by Sambatek, with supporting exhibits:
 - a. Exhibit 1: Site Plan
 - b. Exhibit 2: Array Section AA
 - c. Exhibit 3: Firm Panels
 - d. Exhibit 4: FIRMETTE
 - e. Exhibit 5: Cross Sections A and B
 - f. Exhibit 6: HEC-RAS model results

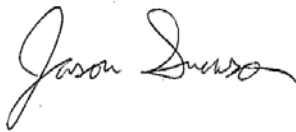
g. Exhibit 7: No-Rise Certification

Findings:

- 1) A complete application was received on March 26, 2019. The initial 60-day decision period per MN Statute 15.99 expires on May 25, 2019.
- 2) The project consists of constructing a solar array facility adjacent to the existing Hindu Temple to provide electrical power generation to meet the temple's needs.
- 3) Stormwater from this site will discharge towards Rush Creek and associated wetlands and floodplain. No disturbance or changes to the remainder of the stormwater system as previously constructed are proposed as part of this application.
- 4) This project will disturb 0.62 acres and create 0.18 acres of total impervious areas. Since the total disturbance is less than 1 acre, and less than 1 acre of new impervious surface will be created by this project, Rule D, Stormwater Management review is only required due to the work proposed in the Rush Creek Floodplain. Rate Control, Water Quality, and Infiltration requirements do not apply to this proposed project.
- 5) Rule E, Erosion and Sediment Controls: Erosion control details are shown on the grading plan sheets that address commission erosion control requirements. As the project is less than 1 acre in size, no NPDES permit or SWPPP is required.
- 6) Rule F, Floodplain Alterations: The 100 year base flood elevation at the proposed solar array site is 913.2 (1988 Datum). Per the proposed plans, the bottom of the proposed solar panel is at or above 914.2, at least 1 foot above the existing BFE. The proposed solar array is to be supported by 6" I beams driven into the ground, spaced 20 feet apart. This was modeled using HEC-RAS, and the applicant is able to demonstrate that there is a no-rise condition as a result of the proposed project. No other grading is proposed in the floodplain. As a result, the proposed plans meet the requirements of the Commission.
- 7) Wetland Boundaries have been reviewed and approved by the LGU, the City of Maple Grove. No impacts to wetlands or wetland buffers are proposed as part of this project.

Recommendation:

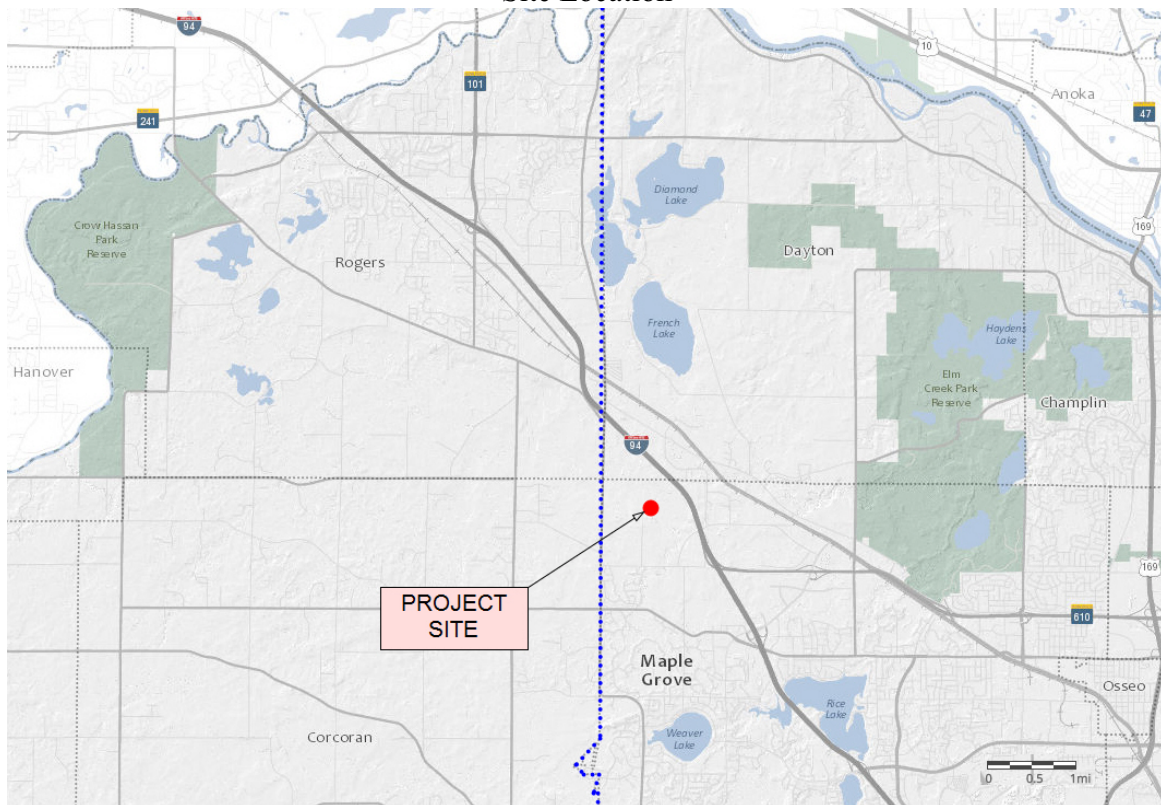
Approval, with no conditions.



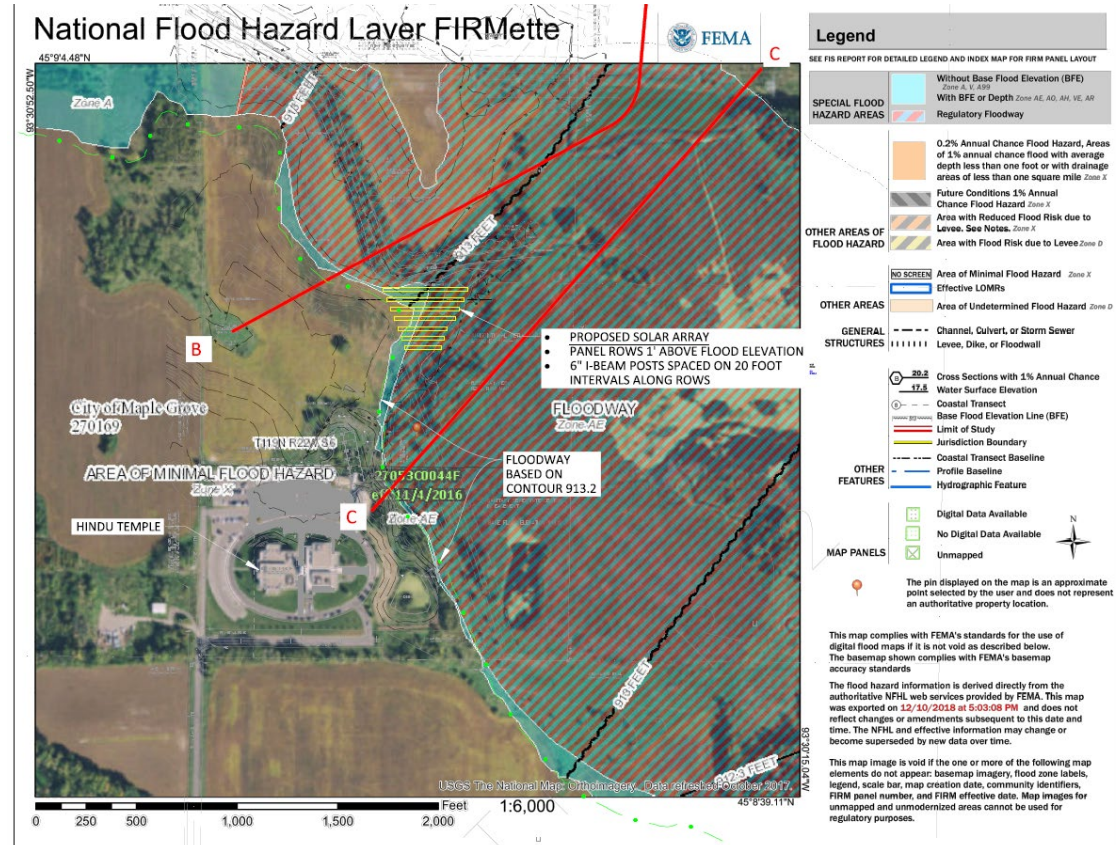
May 1, 2019

Hennepin County
Department of Environment and Energy
Advisor to the Commission

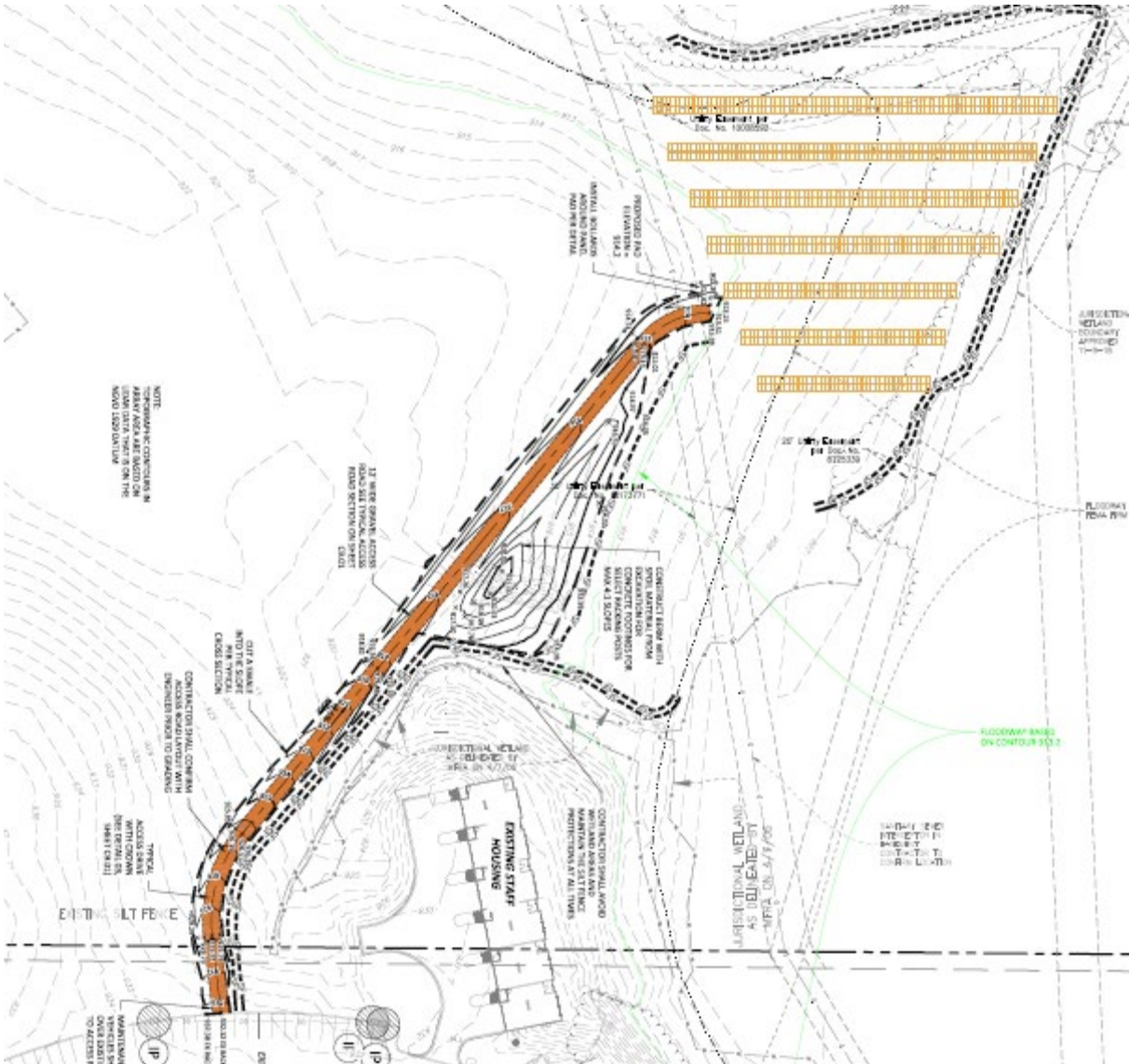
Site Location



AerialPhoto



Site Plan



Elm Creek Watershed Management Commission - Proposed 2020 Operating Budget

	A	B	C	D	AR	AS	AT	AU	AV	AW	AX	AY	AZ
3					2017 Budget	2017 Final	2018 Budget		Final per Prelim 2018 Audit	2019 Budget		2020 Budget	
4	GENERAL OPERATING BUDGET												
5	Operating Expenses												
6		Administrative			90,000	86,212	90,000		84,728	90,000		90,000	
7			Watershed-wide TMDL Admin				2,500	implementation		1,500		300	
8		Grant Writing			5,000	0	4,000			4,000		1,000	
9		Website			6,000	1,807	6,000	add Facebook	1,973	5,000		3,000	
10		Legal Services			2,000	0	2,000		271	2,000		2,000	
11		Audit			5,000	4,500	5,000		4,500	5,000		5,000	
12		Insurance	(dividend 2017 = \$487)		3,800	2,355	3,900		2,993	3,900		3,900	
13		Technical support - HCEE										15,000	
14		Contingency			2,000	983	1,000			1,000		1,000	
15			Subtotal		113,800	95,857	114,400		94,465	112,400		121,200	
16		Project Reviews											
17			Technical - HCEE		98,000	90,970	95,000		92,477	97,400		0	
18			Technical - HCEE - Floodplain modeling				46,386	rev to 2018 Budget	7,027	46,386		39,360	
19			Technical Support - Consultant		15,000	8,424	12,000		37,553	15,000		185,000	
20			Admin Support		11,000	13,425	14,000		13,543	15,000		15,000	
21			Subtotal		124,000	112,819	167,386		150,600	173,786		239,360	
22		Wetland Conservation Act											
23			WCA Expense - HCEE		12,000	12,178	17,750		15,886	18,200		3,000	
24			WCA Expense - Legal		500	512	500		683	500		500	
25			WCA Expense - Admin		2,000	1,680	1,500		3,388	2,000		1,000	
26			Subtotal		14,500	14,370	19,750		19,957	20,700		4,500	
27		Water Monitoring											
28			Stream Monitoring										
29			Stream Monitoring - USGS		24,177	24,177	24,900		21,660	41,000	biennial contract	24,000	
30			Stream Monitoring - TRPD							6,225			
31			Extensive Stream Monitoring		7,000	7,120	7,600		7,600	650		7,200	
32			DO Longitudinal Survey		500	500	1,000		1,000			1,000	
33			Gauging Station - Elec Bill		220	206	250		208	250		250	
34			Rain Gauge Network		100		100			100		100	

Elm Creek Watershed Management Commission - Proposed 2020 Operating Budget

	A	B	C	D	AR	AS	AT	AU	AV	AW	AX	AY	AZ
35				Lake Monitoring									
36				Lake Monitoring - CAMP	1,200	200	720		550	760		760	
37				Lake Monitoring - TRPD									
38				Sentinel Lakes	2,470	2,325	3,300		3,300	8,100		8,100	
39				Additional lake	618	775	825			1,500		2,500	
40				Aquatic Vegetation Surveys	1,029		1,100		1,100	325		1,100	
41	v			Source Assessment	2,000		0						
42	v			Watershed-wide TMDL - Followup - TRPD	10,000	668	5,000			2,500		1,000	
43				Wetland Monitoring - WHEP	4,000	4,000	4,000		4,000	4,000		4,000	
45				Subtotal	53,314	39,971	48,795		39,418	65,410		50,010	
46				Education									
47				Education - City/Citizen Programs	4,000	4,066	4,000		2,269	4,000		3,000	
49				WMWA General Admin	4,000	3,750	4,000		2,000	5,000		5,000	
50				WMWA Implementa Activities incl Watershed	6,000	6,000	6,500		3,250	6,500		6,500	
52				R Garden Workshop/Intensive BMPs	2,000	2,294	2,000		2,924	2,000		3,000	
53				Education Grants	2,000	225	2,000			1,000		1,000	
54				Macroinvertebrate Monitoring-River Watch	6,000	5,000	3,000		3,000	3,000		3,000	
55				Ag Specialist									
56				Subtotal	24,000	21,335	21,500		13,443	21,500		21,500	
61				Management Plan									
62				Plan Amendments	5,000	1,370	2,000		1,388	2,000		2,000	
63				Local Plan Review	2,000		8,000	incl. in line 16					
64				Contribution to 4th Generation Plan				Consider \$10,000/set-aside beginning 2021					
65				Subtotal	7,000	1,370	10,000		1,388	2,000		2,000	

Elm Creek Watershed Management Commission - Proposed 2020 Operating Budget

	A	B	C	D	AR	AS	AT	AU	AV	AW	AX	AY	AZ
66				CIPs, Grants, Special Projects, Studies									
67				Capital Outlay - CIPs - Ad Valorem	249,000	2,244	490,000		323,545	462,500		423,323	
68				Grants		212,076			27,631			125,000	
69				Projects ineligible for ad valorem	50,000		50,000		0	50,000		0	
73				Studies, Subwatershed Assessments	35,000	4,000	35,000		3,534	35,000		0	
74				Cash Sureties					165,571				
76				Subtotal	334,000	218,320	575,000		520,281	547,500		548,323	
79				Contingency	0		0		0	0		0	
80				Subtotal	0	0	0		0	0		0	
81				Total Op Exp (lines 15,21,26,45,56,65,76,80)	670,614	504,042	956,831	0	839,552	943,296	0	986,893	
82													
83				Revenue									
84				CIPs - Ad Valorem	249,000	494,330	490,000		436,393	462,500		423,323	
85				Grant Revenue		125,140			167,855			100,000	
86				Floodplain Modeling			46,386			46,386		39,360	
87				Project Review Fees	100,000	78,125	80,000		73,305	80,000		80,000	
88				Water Monitoring - TRPD Co-op Agmt	6,500	5,036	6,500		5,000	5,000		5,500	
89				BMP Implementation									
90				WCA Fees	8,000	4,700	10,000		3,450	5,000		0	
91				Forfeited/Reimbursed Sureties, Reimbursement from LGUs	0	2,289	0		2,733	4,000			
92				Membership Dues	219,700	219,700	225,000	2.415% increase	225,000	230,400	3.00%	237,300	
93				Watershed-wide TMDL									
94				Interest Income	100	5,921	250		18,382	2,500		8,000	
95				Dividend Income			750		223	500		250	
96				Miscellaneous Income									
97													
98				Total Operating Revenue (lines 84-97)	583,300	935,241	858,886	0	932,341	836,286	0	893,733	0
99				Surplus (Deficit) (lines 81, 98)	87,314	431,199	97,945	0	92,789	107,010	0	93,160	

Elm Creek Watershed Management Commission - Proposed 2020 Operating Budget

	A	B	C	D	AR	AS	AT	AU	AV	AW	AX	AY	AZ
100													
101				Assets									
102				Cash and investments		959,050			1,204,595	Cash on hand			
103				Restricted cash		150,571			98,444	Lines 109 and 110 below			
104				Accounts Receivable		10,262			15,167	includes Commission invoices outstanding plus Flood Mapping expenses unpaid			
105				Total Assets		1,119,883			1,318,206	A			
106													
107				Liabilities and Fund Balances									
108				Accounts payable		54,320			107,830	includes Commission expenses paid and WCA escrow returned in Jan 2019			
109				WCA Escrows		150,571			30,000				
110				Unearned Revenue					68,444	includes unearned revenue from Fish Lake and Watershed Based grants			
111				Total Liabilities		204,891			206,274	B			
112													
113				Fund Balances									
114				Restricted for CIPs		621,135			732,761				
115				Closed Project Account					1,222	funds remaining after project closed, to be designated for future CIPs only			
116						621,135			733,983				
117													
118				Assigned for projects, studies		143,832			225,297				
119				Assigned for other		0			0				
120				Total Assigned Funds		143,832			225,297	D			
121													
122				Unrestricted/unassigned fund balances		150,025			152,651	Funds not designated for any purpose		47,519	AV122 minus AW99 minus AY99 (this is a plus number)
123						150,025		A-B-C-D	152,651	E			
124													
125				Total Fund Balance/Net position		914,992		C+D+E	1,111,931	F			
126													
127				Total Liabilities and fund balances		1,119,883		B+F	1,318,205	G			
128													
129													
130													
131													
132													
133													
134													
135													

**Elm Creek Watershed Management Commission
2020 Member Assessments**

2018	2017 Taxable Market Value	2018 Budget Share		Increase over Prev Year	
		%age	Dollars	%age	Dollars
Champlin	435,155,559	3.82%	8,593.96	1.60%	136
Corcoran	742,511,061	6.52%	14,663.98	0.28%	40
Dayton	563,384,729	4.95%	11,126.38	7.68%	794
Maple Grove	5,908,582,953	51.86%	116,689.62	0.20%	234
Medina	950,777,365	8.35%	18,777.07	2.26%	415
Plymouth	1,108,795,705	9.73%	21,897.80	17.32%	3,233
Rogers	1,683,675,595	14.78%	33,251.20	1.36%	448
Totals	11,392,882,967	100.00%	225,000.00	2.41%	5,300
2019	2018 Taxable Market Value	2019 Budget Share		Increase over Prev Year	
		%age	Dollars	%age	Dollars
Champlin	482,451,066	3.96%	9,131.64	6.26%	538
Corcoran	805,284,845	6.62%	15,242.10	3.94%	578
Dayton	657,235,681	5.40%	12,439.89	11.81%	1,314
Maple Grove	6,195,629,078	50.90%	117,268.32	0.50%	579
Medina	1,017,473,342	8.36%	19,258.32	2.56%	481
Plymouth	1,218,746,394	10.01%	23,067.93	5.34%	1,170
Rogers	1,795,887,426	14.75%	33,991.82	2.23%	741
Totals	12,172,707,832	100.00%	230,400.00	2.40%	5,400
2020	2019 Taxable Market Value	2019 Budget Share		Increase over Prev Year	
		%age	Dollars	%age	Dollars
	540,590,344	4.12%	9,768.39	2.99%	284
Corcoran	865,123,487	6.59%	15,632.66	2.99%	455
Dayton	749,481,401	5.71%	13,543.02	2.99%	394
Maple Grove	6,614,821,616	50.37%	119,528.89	2.99%	3,476
Medina	1,050,664,076	8.00%	18,985.35	2.99%	552
Plymouth	1,418,363,351	10.80%	25,629.62	2.99%	745
Rogers	1,893,322,435	14.42%	34,212.07	2.99%	995
Totals	13,132,366,710	100.00%	237,300.00	2.99%	6,900



May 2, 2019

Mr. Doug Baines, Chair
Elm Creek Watershed Management Commission
3235 Fernbrook Lane
Plymouth, Minnesota 55447

re: letter of interest to provide technical services

Dear Mr. Baines:

Earlier this year, Barr Engineering Co. (Barr) expressed our continued interest in serving the Elm Creek Watershed Management Commission as one of your technical consultants, and the Commission voted at the February 2019 meeting to continue to use Barr as one of its technical consultants.

Since Barr began working with the Commission approximately 14 years ago, Hennepin County Environmental Services has been the primary technical services provider. Barr has provided technical support in various forms. At the March 2019 meeting, the County informed the Commission they will no longer be offering technical services after 2019.

Barr has appreciated its support role and is interested in continuing its relationship with the Commission as its primary provider of technical services. We recognize that this will result in additional responsibilities and workload that the County had primarily provided. We have already begun to prepare for the anticipated change in our role with the Commission by ensuring we have the capacity to continue to provide high-level technical service to the Commission.

Thank you for your consideration to continue to work with the Commission in this modified role. If you have any questions or require further information, please contact me (952-832-2784, jherbert@barr.com) or project manager Jeff Weiss (952-832-2706, jweiss@barr.com). We look forward to continuing our successful working relationship.

Sincerely,

A handwritten signature in blue ink that reads "Jim Herbert".

Jim Herbert, PE
Vice President, Principal in Charge

A handwritten signature in blue ink that reads "Jeff Weiss".

Jeff Weiss, PE
Project Manager

PRELIMINARY DRAFT
For Review and Discussion
Subject to Change

ELM CREEK WATERSHED
MANAGEMENT COMMISSION

Financial Statements and
Supplemental Information
For the Year Ended
December 31, 2018

PRELIMINARY DRAFT
For Review and Discussion
Subject to Change

ELM CREEK WATERSHED MANAGEMENT COMMISSION

Table of Contents

	Page
FINANCIAL SECTION	
INDEPENDENT AUDITORS' REPORT	1 - 2
BASIC FINANCIAL STATEMENTS	
Government-Wide Financial Statements	
Statement of Net Position and Governmental Fund Balance Sheet	3
Statement of Activities and Governmental Fund Revenues, Expenditures, and Changes in Fund Balances/Net Position - Budget and Actual	4
Notes to Basic Financial Statements	5 - 14
OTHER REQUIRED REPORTS	
Independent Auditors' Report on Internal Control Over Financial Reporting and on Compliance and Other Matters	15 - 16
Independent Auditors' Report on Minnesota Legal Compliance	17

PRELIMINARY DRAFT
For Review and Discussion
Subject to Change

INDEPENDENT AUDITORS' REPORT

Commissioners
Elm Creek Watershed Management Commission
Plymouth, Minnesota

Report on the Financial Statements

We have audited the accompanying financial statements of the governmental activities and major fund of the Elm Creek Watershed Management Commission (the Commission), as of and for the year ended December 31, 2018, and the related notes to the financial statements, which collectively comprise the Commission's basic financial statements as listed in the table of contents.

Management's Responsibility for the Financial Statements

The Commission's management is responsible for the preparation and fair presentation of these financial statements in accordance with accounting principles generally accepted in the United States of America; this includes the design, implementation, and maintenance of internal control relevant to the preparation and fair presentation of financial statements that are free from material misstatement, whether due to fraud or error.

Auditor's Responsibility

Our responsibility is to express an opinion on these financial statements based on our audit. We conducted our audit in accordance with auditing standards generally accepted in the United States of America. Those standards require that we plan and perform the audit to obtain reasonable assurance about whether the financial statements are free of material misstatement.

An audit involves performing procedures to obtain audit evidence about the amounts and disclosures in the financial statements. The procedures selected depend on the auditor's judgment, including the assessment of the risks of material misstatement of the financial statements, whether due to fraud or error. In making those risk assessments, the auditor considers internal control relevant to the Commission's preparation and fair presentation of the financial statements in order to design audit procedures that are appropriate in the circumstances, but not for the purpose of expressing an opinion on the effectiveness of the entity's internal control. Accordingly, we express no such opinion. An audit also includes evaluating the appropriateness of accounting policies used and the reasonableness of significant accounting estimates made by management, as well as evaluating the overall presentation of the financial statements.

We believe that the audit evidence we have obtained is sufficient and appropriate to provide a reasonable basis for our audit opinion.

Opinion

In our opinion, the financial statements referred to above present fairly, in all material respects, the respective financial position of the governmental activities and major fund of the Commission as of December 31, 2018, the respective changes in the financial position thereof, and the budgetary comparison for the General Fund for the year then ended in accordance with accounting principles generally accepted in the United States of America.

PRELIMINARY DRAFT
For Review and Discussion
Subject to Change

OTHER MATTERS

Required Supplementary Information

Accounting principles generally accepted in the United States of America require that Management's Discussion and Analysis (MD&A) be presented to supplement the basic financial statements. Such information, although not a part of the basic financial statements, is required by Governmental Accounting Standards Board, who considers it to be an essential part of financial reporting for placing the basic financial statements in an appropriate operational, economic, or historical context. The Commission has not presented the MD&A that accounting principles generally accepted in the United States of America have determined necessary to supplement, although not required to be part of, the basic financial statements.

Prior Year Comparative Information

We have previously audited the Commission's financial statements for the year ended December 31, 2017 and, in our report dated April 11, 2018, we expressed an unqualified opinion on the financial statements of the governmental activities and major fund. The financial statements include prior year partial comparative information, which does not include all of the information required in a presentation in conformity with accounting principles generally accepted in the United States of America. Accordingly, such information should be read in conjunction with the Commission's financial statements for the year ended December 31, 2017, from which such information was derived.

Other Reporting

We have also issued our report dated _____, 2019, on our consideration of the Commission's internal control over financial reporting and our tests of its compliance with certain provisions of laws, regulations, contracts and grant agreements and other matters. The purpose of that report is to describe the scope of our testing of internal control over financial reporting and compliance and the results of that testing, and not to provide an opinion on the internal control over financial reporting or on compliance.

_____, 2019

PRELIMINARY DRAFT
For Review and Discussion
Subject to Change

BASIC FINANCIAL STATEMENTS

PRELIMINARY DRAFT
For Review and Discussion
Subject to Change

Elm Creek Watershed Management Commission

Statement of Net Position and
Governmental Fund Balance Sheet

As of December 31, 2018

(with Partial Comparative Actual Amounts as of December 31, 2017)

	Governmental Activities	
	2018	2017
Assets		
Cash and investments	\$ 1,204,595	\$ 959,050
Restricted cash	98,444	150,571
Due from local governments	15,167	10,262
Total assets	\$ 1,318,206	\$ 1,119,883
Liabilities and Fund Balances/Net Position		
Liabilities		
Accounts payable	\$ 107,830	\$ 54,320
Financial and administrative guarantee fee deposits	30,000	150,571
Unearned revenue	68,444	-
Total liabilities	206,274	204,891
Fund balances/net position		
Restricted fund balances/net position		
Restricted for capital improvement projects	732,763	621,135
Restricted closed project funds	1,221	-
Total restricted fund balance/net position	733,984	621,135
Assigned fund balances/net position		
Assigned for capital projects, studies	175,297	143,832
Assigned for projects ineligible for ad valorem	50,000	-
Unrestricted/unassigned fund balances/net position	152,651	150,025
Total assigned or unrestricted fund balances/net position	377,948	293,857
Total fund balances/net position	1,111,932	914,992
Total liabilities and fund balances/net position	\$ 1,318,206	\$ 1,119,883

PRELIMINARY DRAFT
For Review and Discussion
Subject to Change

Elm Creek Watershed Management Commission

Statement of Activities and
Governmental Fund Revenues, Expenditures, and
Changes in Fund Balances/Net Position
Budget and Actual

Year Ended December 31, 2018

(with Partial Comparative Actual Amounts for the Year Ended December 31, 2017)

	Governmental Activities		
	2018	2017	
	Original and Final Budget	(Audited)	Over (Under) (Audited)
Revenue			
General			
Member assessments	\$ 225,000	\$ 225,000	\$ -
Property taxes (ad valorem)	490,000	436,393	(53,607)
Charges for services - project and wetland review fees	90,000	79,488	(10,512)
Reimbursements	6,500	5,000	(1,500)
Grants	-	99,411	99,411
Interest income	1,000	18,381	17,381
Total revenue	812,500	863,673	51,173
Expenditures			
Current			
Administration	113,500	104,317	(9,183)
Education	21,500	13,443	(8,057)
Grant programs	-	27,631	27,631
Insurance	3,900	2,770	(1,130)
Professional fees	7,000	4,771	(2,229)
Technical support	107,000	145,916	38,916
Water monitoring	48,795	39,418	(9,377)
Watershed programs	108,750	-	(108,750)
Watershed plan	10,000	1,388	(8,612)
Capital outlay			
Improvement projects	490,000	327,079	(162,921)
Total expenditures	910,445	666,733	(243,712)
Net change in fund balances/net position	\$ (97,945)	196,940	\$ 294,885
Net fund balances/net position			
Beginning of year		914,992	483,794
End of year		\$ 1,111,932	\$ 914,992

PRELIMINARY DRAFT
For Review and Discussion
Subject to Change

Elm Creek Watershed Management Commission

Notes to Financial Statements
December 31, 2018

NOTE 1 - SUMMARY OF SIGNIFICANT ACCOUNTING POLICIES

Organization

The Elm Creek Watershed Management Commission is formed under a Joint Powers Agreement, as amended according to Minnesota Statutes Sections 103B.201 through 103B.255 and Minnesota Rules Chapter 8410 relating to Metropolitan Area Local Water Management and its reporting requirements. Elm Creek Watershed Management Commission was established in February, 1973 to protect and manage the natural resources of the Elm Creek Watershed.

The Commission is considered a governmental unit, but is not a component unit of any of its members. As a governmental unit, the Commission is exempt from federal and state income taxes.

Reporting Entity

A joint venture is a legal entity resulting from a contractual agreement that is owned, operated, or governed by two or more participants as a separate and specific activity subject to joint control, in which the participants retain either an ongoing financial interest or an ongoing financial responsibility. The Commission is considered a joint venture.

As required by accounting principles generally accepted in the United States of America, these financial statements include the Commission (the primary government) and its component units. Component units are legally separate entities for which the primary government is financially accountable, or for which the exclusion of the component unit would render the financial statements of the primary government misleading. The criteria used to determine if the primary government is financially accountable for a component unit include whether or not the primary government appoints the voting majority of the potential component's unit board, is able to impose its will on the potential component unit, is in a relationship of financial benefit or burden with the potential component unit, or is fiscally depended upon by the potential component unit. Based on these criteria, there are no component units required to be included in the Commission's financial statements.

Government-Wide and Fund Financial Statement Presentation

The government-wide financial statements (the Statement of Net Position and the Statement of Activities) report information about the reporting government as a whole. These statements include all the financial activities of the Commission. The Statement of Activities demonstrates the degree to which the direct expenses of a given function are offset by program revenues. Direct expenses are those that are clearly identifiable with a specific function or segment. Program revenues include charges to customers or applicants who purchase, use, or directly benefit from goods, services, or privileges provided by a given function or segment, and grants or contributions that are restricted to meeting the operational or capital requirements of a particular function or segment. Other internally directed revenues are reported instead as general revenues.

PRELIMINARY DRAFT
For Review and Discussion
Subject to Change

Elm Creek Watershed Management Commission

Notes to Financial Statements (continued)
December 31, 2018

NOTE 1 - SIGNIFICANT ACCOUNTING POLICIES (CONTINUED)

Measurement Focus, Basis of Accounting and Financial Statement Presentation

The government-wide financial statements are reported using the economic resources measurement focus and the accrual basis of accounting. Revenues are recorded when earned and expenses are recorded when a liability is incurred, regardless of the timing of related cash flows. Grants and similar items are recognized as revenue as soon as eligibility requirements imposed by the provider have been met.

Governmental fund financial statements are reported using the current financial resources measurement focus and the modified accrual basis of accounting. Revenues are recognized as soon as they are both measurable and available. Revenues are considered to be available when they are collectible within the current period or soon enough thereafter to pay liabilities of the current period. For this purpose, the Commission considers revenue to be available if they are collected within 60 days of the end of the current fiscal period. Expenditures generally are recorded when a liability is incurred, as under accrual accounting.

Fund Financial Statement Presentation

The accounts of the Commission are organized on the basis of funds, each of which is considered a separate accounting entity. The operations of each fund are accounted for with a separate set of self-balancing accounts that comprise its assets, liabilities, fund equity, revenue, and expenditures. Resources are allocated to, and accounted for in individual funds based on the purposes for which they are to be spent and the means by which spending activities are controlled. The resources of the Commission are accounted for in one major fund:

- **General Fund (Governmental Fund Type)** - This fund is used to receive dues and miscellaneous items which may be disbursed for any and all purposes authorized by the bylaws of the Commission.

Typically, separate fund financial statements are provided for Governmental Funds. However, due to the simplicity of the Commission's operation, the Governmental Fund financial statements have been combined with the government-wide statements.

Budgets

The amounts shown in the financial statements as "budget" represent the budget amounts based on the modified accrual basis of accounting. A budget for the General Fund is adopted annually by the Commission. Appropriations lapse at year-end. Budgetary control is at the fund level.

Use of Estimates

The preparation of financial statements in conformity with generally accepted accounting principles requires management to make estimates and assumptions that affect the reported amounts of assets and liabilities and disclosure of contingent assets and liabilities at the date of the financial statements and the reported amounts of revenues and expenses during the reporting period. Actual results could differ from those estimates.

PRELIMINARY DRAFT
For Review and Discussion
Subject to Change

Elm Creek Watershed Management Commission
Notes to Financial Statements (continued)
December 31, 2018

NOTE 1 - SIGNIFICANT ACCOUNTING POLICIES (CONTINUED)

Members' Contributions

Members' contributions are calculated based on the member's share of the taxable market value of all real property within the watershed to the total market value of all real property in the watershed.

Capital assets

The Commission follows the policy of expensing any supplies or small equipment at the time of purchase. The Commission currently has no capitalized assets.

Risk Management

The Commission is exposed to various risks of loss related to torts: theft of, damage to, and destruction of assets; error and omissions; and natural disasters. The Commission participates in the League of Minnesota Cities Insurance Trust (LMCIT), a public entity risk pool for its general property, casualty, and other miscellaneous insurance coverages. LMCIT operates as a common risk management and insurance program for a large number of cities in Minnesota. The Commission pays an annual premium to LMCIT for insurance coverage. The LMCIT agreement provides that the trust will be self-sustaining through member premiums and will reinsure through commercial companies for claims in excess of certain limits. Settled claims have not exceeded this commercial coverage in any of the past three years. There were no significant reductions in insurance coverage during the year ended December 31, 2018.

Receivables

The Commission utilizes an allowance for uncollectible accounts to value its receivables; however, it considers all of its receivables to be collectible as of December 31, 2018 and 2017.

Net Position

In the government-wide financial statements, net position represents the difference between assets, deferred outflows of resources, liabilities, and deferred inflows of resources. Net position is displayed in three components:

Net Investment in Capital Assets - Consists of capital assets, net of accumulated depreciation, reduced by any outstanding debt attributable to acquire capital assets.

Restricted Net Position - Consists of net position restricted when there are limitations imposed on their use through external restrictions imposed by creditors, grantors, or laws or regulations of other governments.

Unrestricted Net Position - All other net position that do not meet the definition of "restricted" or "net investment in capital assets."

The Commission applies restricted resources first when an expense is incurred for which both restricted and unrestricted resources are available.

PRELIMINARY DRAFT
For Review and Discussion
Subject to Change

Elm Creek Watershed Management Commission

Notes to Financial Statements (continued)
December 31, 2018

NOTE 1 - SIGNIFICANT ACCOUNTING POLICIES (CONTINUED)

Prior Period Comparative Financial Information/Reclassification

The basic financial statements include certain prior year partial comparative information in total but not at the level of detail required for a presentation in conformity with accounting principles generally accepted in the United States of America. Accordingly, such information should be read in conjunction with the Commission's financial statements for the year ended December 31, 2017, from which the summarized information was derived. Also, certain amounts presented in the prior year data may have been reclassified in order to be consistent with the current year's presentation.

Unearned Revenue

The Commission recognizes grant revenue as it becomes eligible to receive the grant. If the grant has restrictions that have not been satisfied, the revenue is deferred until the Commission has satisfied them.

In 2017, the Commission was awarded a grant of \$200,000 from the Board of Water and Soil Resources to fund the Fish Lake Internal Phosphorus Loading Control project. As of December 31, 2018, the Commission held \$1,201 of unearned grant revenue.

In 2018, the Commission was awarded a grant of \$134,486 from the Board of Water and Soil Resources to fund the Elm Creek Restoration Phase IV project. As of December 31, 2018, the Commission held \$67,243 of unearned grant revenue.

PRELIMINARY DRAFT
For Review and Discussion
Subject to Change

Elm Creek Watershed Management Commission

Notes to Financial Statements (continued)
December 31, 2018

NOTE 2 - ASSETS, LIABILITIES AND NET POSITION

Deposits

In accordance with applicable Minnesota Statutes, the Commission maintains a checking account authorized by the Commission.

The following is considered the most significant risk associated with deposits:

Custodial Credit Risk - In the case of deposits, this is the risk that in the event of a bank failure, the Commission's deposits may be lost.

Minnesota Statutes require that all deposits be protected by federal deposit insurance, corporate surety bond, or collateral. The market value of collateral pledged must equal 110 percent of the deposits not covered by federal deposit insurance or corporate surety bonds. Authorized collateral includes treasury bills, notes, and bonds; issues of U.S. government agencies; general obligations rated "A" or better; revenue obligations rated "AA" or better; irrevocable standard letters of credit issued by the Federal Home Loan Bank; and certificates of deposit. Minnesota Statutes require that securities pledged as collateral be held in safekeeping in a restricted account at the Federal Reserve Bank or in an account at a trust department of a commercial bank or other financial institution that is not owned or controlled by the financial institution furnishing the collateral. The Commission has no additional deposit policies addressing custodial credit risk.

At year-end, the Commission had no funds held in its bank account. All funds were transferred to their MBIA investment account. (see below)

Investments

At December 31, 2018 and 2017, the Commission held \$1,303,039 and \$1,109,621 (approximate cost and fair market value), respectively, in investments with MBIA in Minnesota 4M Holdings.

The 4M fund is an external investment pool not registered with the Securities Exchange Commission (SEC) that follows the same regulatory rules of the SEC under rule 2a7. The 4M Fund is a customized cash management and investment program for Minnesota public funds that is allowable under Minnesota Statutes. The fair value of the position in the pool is the same as the value of the pool shares.

PRELIMINARY DRAFT
For Review and Discussion
Subject to Change

Elm Creek Watershed Management Commission
Notes to Financial Statements (continued)
December 31, 2018

NOTE 2 - ASSETS, LIABILITIES AND NET POSITION (CONTINUED)

Investments are subject to various risks, the following of which are considered the most significant:

Custodial Credit Risk - For investments, this is the risk that in the event of a failure of the counterparty to an investment transaction (typically a broker-dealer) the Commission would not be able to recover the value of its investments or collateral securities that are in the possession of an outside party. The Commission does not have a formal investment policy addressing this risk, but typically limits its exposure by purchasing insured or registered investments, or by the control of who holds the securities.

Credit Risk - This is the risk that an issuer or other counterparty to an investment will not fulfill its obligations. Minnesota Statutes limit the Commission's investments to direct obligations or obligations guaranteed by the United States or its agencies; shares of investment companies registered under the Federal Investment Company Act of 1940 that receive the highest credit rating, are rated in one of the two highest rating categories by a statistical rating agency, and all of the investments have a final maturity of 13 months or less; general obligations rated "A" or better; revenue obligations rated "AA" or better; general obligations of the Minnesota Housing Finance Agency rated "A" or better; bankers' acceptances of United States banks eligible for purchase by the Federal Reserve System; commercial paper issued by United States corporations or their Canadian subsidiaries, rated of the highest quality category by at least two nationally recognized rating agencies, and maturing in 270 days or less; Guaranteed Investment Contracts guaranteed by a United States commercial bank, domestic branch of a foreign bank, or a United States insurance company, and with a credit quality in one of the top two highest categories; repurchase or reverse purchase agreements and securities lending agreements with financial institutions qualified as a "depository" by the government entity, with banks that are members of the Federal Reserve System with capitalization exceeding \$10,000,000; that are a primary reporting dealer in U.S. government securities to the Federal Reserve Bank of New York; or certain Minnesota securities broker-dealers. The Commission's investment policies do not further address credit risk.

Concentration Risk - This is the risk associated with investing a significant portion of the Commission's investment (considered 5 percent or more) in the securities of a single issuer, excluding U.S. guaranteed investments (such as treasuries), investment pools, and mutual funds. The Commission does not have an investment policy limiting the concentration of investments.

Interest Rate Risk - This is the risk of potential variability in the fair value of fixed rate investments resulting from changes in interest rates (the longer the period for which an interest rate is fixed, the greater the risk). The Commission does not have an investment policy limiting the duration of investments.

PRELIMINARY DRAFT
For Review and Discussion
Subject to Change

Elm Creek Watershed Management Commission

Notes to Financial Statements (continued)
December 31, 2018

NOTE 2 - ASSETS, LIABILITIES AND NET POSITION (CONTINUED)

Guarantee Fee Deposits

The financial and administrative guarantee fee deposits payable are received as guarantee that the mitigation will perform as required. Upon completion, and if the project meets the qualified plan requirements, these financial guarantees are refunded.

NOTE 3 - FUND BALANCE CLASSIFICATION

The following fund balance classifications describe the relative strength of the spending constraints placed on the purposes for which resources can be used:

- **Nonspendable** - amounts that are not in a spendable form (such as inventory) or are required to be maintained intact;
- **Restricted** - amounts constrained to specific purposes by their providers (such as grantors, bondholders, and higher levels of government), through constitutional provisions, or by enabling legislation;
- **Committed** - amounts constrained to specific purposes by a government itself, using its highest level of decision-making authority; to be reported as committed, amounts cannot be used for any other purpose unless the government takes the same highest level action to remove or change the constraint;
- **Assigned** - amounts a government intends to use for a specific purpose; intent can be expressed by the governing body or by an official or body to which the governing body delegates the authority;
- **Unassigned** - amounts that are available for any purpose; these amounts are reported only in the general fund.

The Commission establishes (and modifies or rescinds) fund balance commitments by passage of an ordinance or resolution. This is typically done through adoption and amendment of the budget. A fund balance commitment is further indicated in the budget document as a designation or commitment of the fund. Assigned fund balance is established by the Commission through adoption or amendment of the budget as intended for specific purpose.

NOTE 4 - COMMITMENTS AND CONTRACTS

Minnesota Pollution Control Agency (MPCA) - Watershed-wide TMDL Project

During 2009, the MPCA contracted the Commission to conduct a water monitoring program of the Elm Creek watershed for a cost not to exceed \$35,000. This contract was amended four times to add additional funds of \$148,000 for phase II, \$100,000 for phase III, \$109,995 for phase IV, \$16,500 for phase V and \$58,495 for phase VI. Total cost to the MPCA not to exceed \$467,990. The Commission has contracted Three Rivers Park District to perform the services in conjunction with this project. The Commission incurred expenses of \$668 during the years ended December 31, 2017. This project was finalized and approved during 2017.

PRELIMINARY DRAFT
For Review and Discussion
Subject to Change

Elm Creek Watershed Management Commission
Notes to Financial Statements (continued)
December 31, 2018

NOTE 4 - COMMITMENTS AND CONTRACTS (CONTINUED)

Restricted fund balance - capital improvement projects

For the year 2015, the Commission received \$68,870 from tax levies that is to be used for the Tower Drive improvement project. As of December 31, 2018, the city of Medina has yet to complete the project. The Commission will hold the remaining funds of \$66,881 (less administrative costs) until completion.

For the year 2015, the Commission received \$62,652 from tax levies that is to be used for the Elm Creek Dam rehabilitation project. As of December 31, 2018, the Commission had expended all of the tax levies and the project was substantially complete.

For the year 2017, the Commission received \$80,255 from tax levies that is to be used for the Fox Creek Stream Bank Stabilization Phase Two Project. As of December 31, 2018, the City of Rogers has yet to complete the project. The Commission will hold the remaining funds of \$80,149 (less administrative costs) until completion.

For the year 2017, the Commission received \$74,929 from tax levies that is to be used for the Mississippi River Shoreline Repair and Stabilization Project. As of December 31, 2018, the Commission had expended all of the tax levies and the project was substantially complete.

For the year 2017, the Commission received \$187,500 from tax levies that is to be used for the Elm Creek Dam Rehabilitation Project. As of December 31, 2018, the Commission had expended all of the tax levies and the project was substantially complete.

For the year 2017, the Commission received \$74,951 from tax levies that is to be used for the Rush Creek Main Restoration Project. As of December 31, 2018, the City of Maple Grove has yet to complete the project. The Commission will hold the remaining funds of \$74,845 (less administrative costs) until completion.

For the year 2017, the Commission received \$74,951 from tax levies that is to be used for the Fish Lake Aluminum Treatment Project. As of December 31, 2018, the City of Maple Grove has yet to complete the project. The Commission will hold the remaining funds of \$74,845 (less administrative costs) until completion.

For the year 2018, the Commission received \$112,347 from tax levies that is to be used for the Fox Creek Phase Three Stabilization Project. As of December 31, 2018, the City of Rogers has yet to complete the project. The Commission will hold the remaining funds of \$112,211 (less administrative costs) until completion.

For the year 2018, the Commission received \$249,664 from tax levies that is to be used for the Mill Pond Fishery Restoration Project. As of December 31, 2018, the City of Champlin has yet to complete the project. The Commission will hold the remaining funds of \$249,528 (less administrative costs) until completion.

Elm Creek Watershed Management Commission

Notes to Financial Statements (continued)
December 31, 2018PRELIMINARY DRAFT
For Review and Discussion
Subject to Change

NOTE 4 - COMMITMENTS AND CONTRACTS (CONTINUED)

Restricted fund balance - capital improvement projects (continued)

For the year 2018, the Commission received \$74,900 from tax levies that is to be used for the Rain Garden at Independence Avenue Project. As of December 31, 2018, the City of Champlin has yet to complete the project. The Commission will hold the remaining funds of \$74,764 (less administrative costs) until completion.

Grants

Fish Lake Internal Phosphorus Loading Control Project

During 2017, the State of Minnesota Board of Water and Soil Resources (BWSR) awarded \$200,000 to the Commission for the Fish Lake Internal Phosphorus Loading Control Project. The project is expected to cost \$300,000. The Commission is to provide \$75,000, the Three Rivers Park District is to provide \$8,000 and the Maple Grove Fish Lake Area Residents Association is to provide \$17,000 of the remaining costs associated with the project.

During 2018 and 2017, the Commission received \$80,000 and \$100,000, respectively, from BWSR and incurred costs of \$344 and \$178,455, respectively.

Rush Creek Headwaters Subwatersheds Assessment Project

During 2017, BWSR awarded \$50,280 to the Commission for the Rush Creek Headwaters Subwatersheds Assessment Project. The project is expected to cost \$62,850. The Commission is to provide \$12,070 and the City of Corcoran is to provide \$500 of the remaining costs associated with the project.

During 2018 and 2017, the Commission received \$20,612 and \$25,140, respectively, from BWSR and incurred costs of \$27,286 and \$33,320, respectively.

Floodplain Modeling Project

During 2018, the Commissioner of Natural Resources awarded the Commission a cost reimbursement grant of up to \$92,773. The grant is for updates to the Special Flood Hazard Areas shown on the FEMA Floodplain maps that are located within the watershed. The total project costs are budgeted for \$92,773 with no match required by the Commission.

During 2018, the Commission incurred \$7,027 of direct project costs.

Watershed Based Funding Grant

During 2018, BWSR awarded \$134,486 to the Commission for streambank and shoreline restoration and protection on Elm Creek. Total project costs are expected to be \$584,486. The Commission is to provide \$150,000 via the 2020 levy and the City of Champlin is to provide \$300,000.

During 2018, the Commission received \$67,243 of the grant and incurred zero costs.

PRELIMINARY DRAFT
For Review and Discussion
Subject to Change

Elm Creek Watershed Management Commission
Notes to Financial Statements (continued)
December 31, 2018

NOTE 5 - MEMBERS' ASSESSMENTS

Dues received from members were as follows:

	For Year Ended December 31			
	2018		2017	
	Amount	Percentage	Amount	Percentage
Champlin	\$ 8,594	3.82 %	\$ 8,458	3.85 %
Corcoran	14,664	6.52	14,624	6.66
Dayton	11,126	4.94	10,333	4.70
Maple Grove	116,690	51.86	116,455	53.01
Medina	18,777	8.35	18,362	8.36
Plymouth	21,898	9.73	18,664	8.50
Rogers	33,251	14.77	32,804	14.92
Total	<u>\$ 225,000</u>	<u>100.00 %</u>	<u>\$ 219,700</u>	<u>100.00 %</u>

PRELIMINARY DRAFT
For Review and Discussion
Subject to Change

OTHER REQUIRED REPORTS

PRELIMINARY DRAFT
For Review and Discussion
Subject to Change

INDEPENDENT AUDITORS' REPORT ON INTERNAL CONTROL OVER
FINANCIAL REPORTING AND ON COMPLIANCE AND OTHER MATTERS

Board of Directors
Elm Creek Watershed Management Commission
Plymouth, MN

We have audited, in accordance with the auditing standards generally accepted in the United States of America, the financial statements of the governmental activities and the major fund of the Elm Creek Watershed Management Commission (the Commission) as of and for the year ended December 31, 2018, and the related notes to the financial statements, which collectively comprise the Commission's basic financial statements, and have issued our report thereon dated _____, 2019.

Internal Control over Financial Reporting

In planning and performing our audit of the financial statements, we considered the Commission's internal control over financial reporting (internal control) to determine the audit procedures that are appropriate in the circumstances for the purpose of expressing our opinions on the financial statements, but not for the purpose of expressing an opinion on the effectiveness of the Commission's internal control. Accordingly, we do not express an opinion on the effectiveness of the Commission's internal control.

A *deficiency in internal control* exists when the design or operation of a control does not allow management or employees, in the normal course of performing their assigned functions, to prevent, or detect and correct, misstatements on a timely basis. A *material weakness* is a deficiency, or combination of deficiencies, in internal control such that there is a reasonable possibility that material misstatement of the financial statements will not be prevented, or detected and corrected on a timely basis. A *significant deficiency* is a deficiency, or combination of deficiencies, in internal control that is less severe than a material weakness, yet important enough to merit attention by those charged with governance.

Our consideration of internal control was for the limited purpose described in the first paragraph of this section and was not designed to identify all deficiencies in internal control that might be material weaknesses or significant deficiencies and therefore, material weaknesses or significant deficiencies may exist that were not identified. Given these limitations, during our audit we did not identify any deficiencies in internal control that we consider to be material weaknesses, as defined above. However, material weaknesses may exist that have not been identified. We did identify the following deficiencies in internal control that we consider to be significant deficiencies:

Because of the limited size of your office staff, your organization has limited segregation of duties. A good system of internal accounting control contemplates an adequate segregation of duties so that no one individual handles a transaction from inception to completion. While we recognize that your organization is not large enough to permit an adequate segregation of duties in all respects, it is important that you be aware of the condition.

PRELIMINARY DRAFT
For Review and Discussion
Subject to Change

Compliance and Other Matters

As part of obtaining reasonable assurance about whether the Commission's financial statements are free from material misstatement, we performed tests of its compliance with certain provisions of laws, regulations, contracts, and grant agreements, noncompliance with which could have a direct and material effect on the determination of financial statement amounts. However, providing an opinion on compliance with those provisions was not an objective of our audit, and accordingly, we do not express such an opinion.

Purpose of this Report

The purpose of this report is solely to describe the scope of our testing of internal control and compliance and the result of that testing, and not to provide an opinion on the effectiveness of the entity's internal control or on compliance. Accordingly, this communication is not suitable for any other purpose.

_____, 2019

PRELIMINARY DRAFT
For Review and Discussion
Subject to Change

INDEPENDENT AUDITORS' REPORT ON
MINNESOTA LEGAL COMPLIANCE

Board of Directors
Elm Creek Watershed Management Commission
Plymouth, Minnesota

We have audited, in accordance with auditing standards generally accepted in the United States of America, the financial statements of the governmental activities and major fund of the Elm Creek Watershed Management Commission (the Commission) as of and for the year ended December 31, 2018, and the related notes to the financial statements, which collectively comprise the Commission's basic financial statements, and have issued our report thereon dated _____, 2019.

MINNESOTA LEGAL COMPLIANCE

The *Minnesota Legal Compliance Audit Guide for Other Political Subdivisions*, promulgated by the State Auditor pursuant to Minn. Stat. 6.65, contains six categories of compliance to be tested: contracting and bidding, deposits and investments, conflicts of interest, claims and disbursements, miscellaneous provisions, and tax increment financing. Our audit considered all of the applicable listed categories, except that we did not test for compliance in tax increment financing, because the Commission does not utilize tax increment financing.

In connection with our audit, nothing came to our attention that caused us to believe that the Commission failed to comply with the provisions of the *Minnesota Legal Compliance Audit Guide for Other Political Subdivisions*. However, our audit was not directed primarily toward obtaining knowledge of such noncompliance. Accordingly, had we performed additional procedures, other matters may have come to our attention regarding the Commission's noncompliance with the above referenced provisions.

PURPOSE OF THIS REPORT

This report is intended solely for the information and use of those charged with governance and management of the Elm Creek Watershed Management Commission and the State Auditor and is not intended to be and should not be used by anyone other than these specified parties.

_____, 2019



2018 Stormwater Annual Report

The City of Corcoran made significant progress toward stormwater pollution prevention in 2018. This report highlights several of the year's projects that will reduce loads of nutrients and sediment reaching surface waters in the City, most notably Rush Creek and its tributaries. These improvements are expected to benefit downstream waters as less pollution enters the Elm Creek and Mississippi River watersheds. Continued progress is expected in 2019 as the City continues to implement opportunity-based water quality improvement projects.

Selected 2018 Projects

Ravinia Residential Development

Development of this 260-acre site in southeast Corcoran includes 19 stormwater ponds for settling of particulates in stormwater runoff. Seventeen of the ponds have sand filtration shelves that control the rate of runoff and preserve pond storage volume. In addition, pond outlets are fitted with slotted weirs to slow outflow and protect the integrity of the downstream channel.

According to an evaluation by the Elm Creek Watershed Management Commission, with all stormwater Best Management Practices (BMPs) in place, the runoff rate from the Ravinia development will be reduced for 2-year, 10-year and 100-year peak flows when compared to pre-development conditions. In addition, nutrient (phosphorus) loads in runoff from the site are estimated to decrease from 157 pounds per year to 145 pounds per year.

Rush Creek Headwaters Subwatershed Assessment

The Rush Creek Headwaters Subwatershed Assessment was completed in 2018 with funding from a Clean Water Fund Grant, the Elm Creek Watershed Management Commission, and the City of Corcoran. The purpose of the assessment was to evaluate conditions in the North Fork Rush Creek and upper part of the South Fork Rush Creek and to identify the most cost-effective practices to correct impaired water quality caused by excess nutrients, excess *E. coli* (fecal bacteria) and low dissolved oxygen.

For each of the six management units in the study, the report identified the top ten practices that would cost-effectively correct the impairments. It also identified specific locations where additional practices, such as wetland restoration, grassed waterways, alternative tile intakes, manure management, or streambank stabilization would have the greatest potential to improve water quality.

Implementation of these practices largely depends on the voluntary participation of property owners and the availability of funding. In late 2018, the Elm Creek Watershed Management Commission applied for a Clean Water Fund Grant from the Board of Water and Soil Resources to begin one or more of the recommended projects. If the grant is awarded, a Hennepin County Rural Conservationist would lead recruitment and implementation efforts.

Continued on next page...

Completing one or more recommended projects would likely have a significant impact on water quality. The highest priority project in the entire study area – a wetland restoration in the South Tributary management unit – would reduce total suspended solids (TSS) by an estimated 157 tons (314,000 pounds) per year and total phosphorus (TP) by an estimated 203 pounds per year. Together, the top ten projects for the entire study area would reduce TSS by more than 1,700 tons (3,400,000 pounds) per year and reduce TP by more than 700 pounds per year.

The City's challenge in implementing any improvement depends largely on landowner cooperation and funding which is significant. The subwatershed assessment is an effective tool to help staff identify opportunity-based projects via development or other grant opportunities.

Smaller Development Projects

Several smaller projects in Corcoran also helped improve surface water quality in 2018. A few of them are featured here.

1. Expansion of Park Place Storage in southwest Corcoran installed three ponds, two detention basins, and one filtration shelf that will reduce the nutrient load and rate of runoff from the site. According to a review by the Elm Creek Watershed Management Commission, these BMPs will cut the TP load by an estimated 1.6 pounds per year and the TSS load by an estimated 7,128 pounds per year.
2. Sunrise Energy Ventures installed a solar garden on 80 acres of former pasture northwest of the intersection of County Roads 19 and 50, in the headwaters area of Rush Creek. Stormwater will be absorbed into the soil under and between the panels, the latter area seeded with short grass prairie species. According to an evaluation by the Elm Creek Watershed Management Commission, the change in land use and incorporation of small storage areas for runoff will reduce peak runoff rates for the 2-year, 10-year, and 100-year events when compared to pre-development conditions. In addition, perennial native vegetation and increased wetland buffer setbacks will reduce the TP load from this site by an estimated 10.1 pounds per year.
3. Bass Lake Crossing is a residential development on former cropland north of County Road 10 and east of Maple Hill Road in east Corcoran. Two stormwater ponds in the development are now active, and the area for two more ponds has been graded. According to a review by the Elm Creek Watershed Management Commission, when all BMPs are installed and functioning, flow rates from the site will decrease for 2-year, 10-year, and 100-year events compared to existing conditions. In addition, phosphorus export is estimated to decline by 12.6 pounds per year. (TSS reduction was not estimated by the watershed's technical staff.)
4. Bass Lake Crossing South (formerly Bass Lake Estates) is a residential and future cold storage development on former cropland south of County Road 10 and west of Lions Park in east Corcoran. One stormwater pond with a filtration bench will reduce the overall runoff rate from the site and decrease nutrient and sediment export. According to a review by the Elm Creek Watershed Management Commission, the TP and TSS loads will decrease by 0.96 and 770 pounds per year, respectively.

Individual Sewage Treatment Systems (ISTS) Disconnections

Until recently, all homes and businesses in Corcoran disposed of wastewater using Individual Sewage Septic Treatment Systems (ISTS) commonly referred to as septic systems. Infrastructure for water and wastewater treatment now extends (or will extend) into the Ravinia, Bellwether, Bass Lake Crossing, and Bass Lake Crossing South developments. As construction began at each of these sites, a total of 11 older homes were removed and their septic systems eliminated.

Continued on next page...

Wastewater infrastructure has also been extended into Downtown Corcoran. In 2018, 10 businesses connected to water and sewer utilities and disconnected their septic systems. In 2019, another 24 businesses will disconnect their septic systems.

According to the MPCA, septic systems are potential sources of surface water and groundwater contamination and eliminating them can be beneficial. Approximate TSS and TP reductions resulting from a septic system disconnection can be calculated using the University of Minnesota's Septic System Improvement Estimator (SSIE). Using conservative values for several variables in the estimator, the following potential removals are calculated.

Systems removed in 2018-2019	Pounds TSS per year removed	Pounds TP per year removed
Business (34)	4,500	180
Residential (11)	1,226	48
<i>Total</i>	<i>5,726</i>	<i>228</i>

Ditch Maintenance Projects

Several ditch maintenance projects were completed by the Public Works Department in 2018 including the Lion's Park Ditch Restoration and Maintenance Project. The project is located north of the Ravinia development and work included removing deadfall and sediment from the ditch in addition to establishing vegetation along its banks to prevent erosion. Although estimates of TSS or TP removal are not yet complete, this project and other ditch improvements have improved water quality in tributaries to Elm and Rush Creeks.

Stormwater Outlook for 2019

New and continuing projects in 2019 are expected to further reduce surface water pollution in Corcoran. As the projects described in the previous section continue, more stormwater BMPs will be installed and begin functioning to reach their maximum combined benefit. In addition, new projects are expected in 2019 that will likely improve stormwater quantity and quality over existing conditions. The major improvement for the watershed is the Maple Hill Estates WWTP closure.

Maple Hill Estates Wastewater Treatment Plant Closure

To improve water quality in Rush Creek, the Elm Creek Total Maximum Daily Load study and implementation plans recommended reducing phosphorus in the discharge from the Maple Hill Estates wastewater treatment plant. Options were to reduce the effluent phosphorus concentration by 60 percent or close the plant and connect this mobile home community to the Metropolitan Council's regional interceptor. The latter option was chosen and connection is expected in 2019.

The amount of phosphorus prevented from entering Rush Creek by closing the plant can be estimated from the Discharge Monitoring Report data from the MPCA. Using 2017 data for the main discharge station (average flow and phosphorus content), the estimated reduction is approximately 160 pounds of phosphorus per year.

Additional Developments

The following development projects (or potential developments) will incorporate stormwater BMPs to improve the quality of Corcoran's surface waters:

- Bass Lake Crossings 2nd Addition, adjacent to Maple Hill Road in east Corcoran
- Bellwether (formerly Encore), a senior housing development west of County Road 101 and straddling Stieg Road in northeast Corcoran

Continued on next page...

Restorations and Retrofits

In addition to development projects, several potential wetland restorations and a stormwater pond retrofit will be planned or considered in 2019.

- Downtown regional stormwater pond retrofit
- Wetland #9 restoration in the Ravinia development
- Study of the Southeast Corcoran wetland restoration project (north of the Ravinia development)
- South Fork of Rush Creek Subwatershed Assessment

Other Best Management Practices

Non-structural practices are also effective methods of stormwater pollution prevention. In 2019, Corcoran expects to begin updating its Stormwater Pollution Prevention Plan (SWPPP) and reapply for coverage under the MPCA's reissued MS4 permit. The SWPPP includes education on a variety of stormwater-related topics, including septic system education which is one of the recommendations of the Rush Creek Headwaters Subwatershed Assessment. Chloride management and manure management will be additional areas of focus when staff review policies, practices, and ordinances in 2019.

Summary of Projected Benefits, 2018-2019

The following table summarizes the estimated reductions in TSS and TP loads resulting from 2018 and known 2019 projects. The projected benefit will increase as more projects are launched in 2019.

Project	Estimated TSS load reduction, lbs/yr	Estimated TP load reduction, lbs/yr
Ravinia Development	--	12
Park Place Storage Expansion	7,128	1.6
Sunrise Energy Ventures Solar Garden	--	10.1
Bass Lake Crossing	--	12.6
Bass Lake Crossing South	770	0.96
Septic system disconnections	5,726	228
Maple Hill Estates WWTP closure	--	160
<i>Total</i>	<i>13,624</i>	<i>425</i>