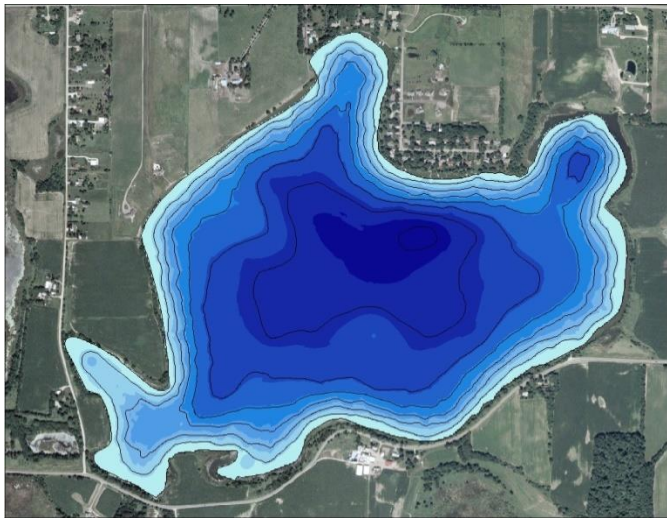
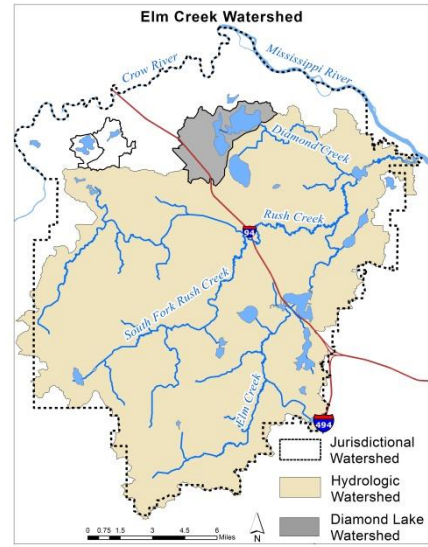
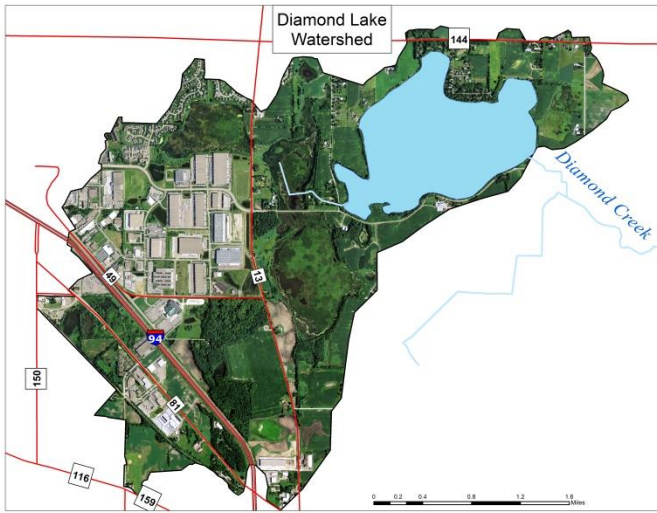
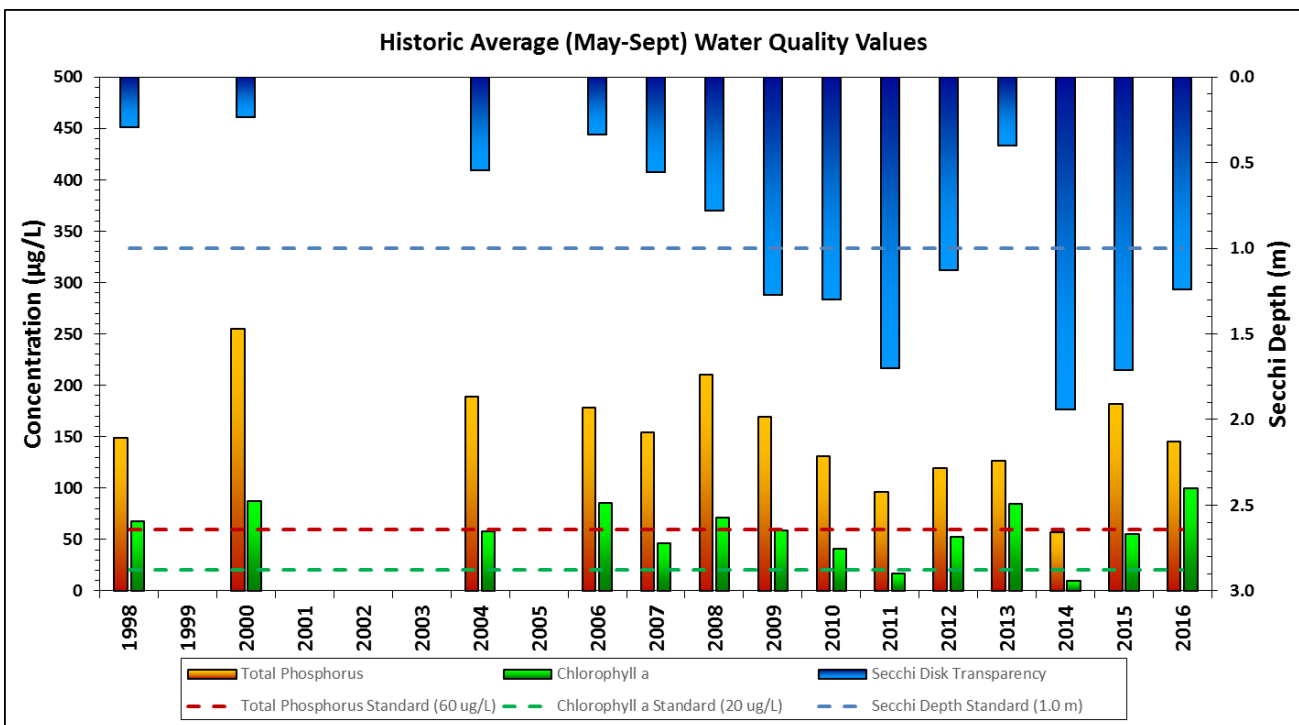


Diamond Lake



Lake and Watershed Characteristics	
DNR #	27012500
Watershed Area	2366.6 Acres
Lake Area	381.8 Acres
% Littoral Area	100%
Average Depth	3.97 ft
Maximum Depth	7.37 ft
Watershed/Lake Area Ratio	6.2 to 1
Hydraulic Residence Time	0.72 Years
Impairment	Excessive Nutrients 2006
Classification	Shallow Lake



Diamond Lake Water Quality Report Card				
Year	TP	Chl-a	Secchi	Avg Grade
1998	D	D	F	D-
1999				
2000	F	F	F	F
2001				
2002				
2003				
2004	F	D	F	F
2005				
2006	F	F	F	F
2007	F	C	F	D-
2008	F	D	D	D-
2009	F	D	C	D
2010	D	C	C	C-
2011	D	B	C	C
2012	D	D	D	D
2013	D	F	F	F
2014	C	B	C	C+
2015	F	D	C	D
2016	D	F	C	D
MPCA Standard	C	C	D	C

Metropolitan Council Grading System (Osgood 1989)

